

KANSAS CORPORATION COMMISSION
OIL & GAS CONSERVATION DIVISION

TEMPORARY ABANDONMENT WELL APPLICATION

OPERATOR: License#
Name:
Address 1:
Address 2:
City: State: Zip:
Contact Person:
Phone:
Contact Person Email:
Field Contact Person:
Field Contact Person Phone:

API No. 15-
Spot Description:
Sec. Twp. S. R.
feet from N / S Line of Section
feet from E / W Line of Section
GPS Location: Lat: , Long:
Datum: NAD27 NAD83 WGS84
County: Elevation: GL KB
Lease Name: Well #:
Well Type: Oil Gas OG WSW Other:
SWD Permit #: ENHR Permit #:
Gas Storage Permit #:
Spud Date: Date Shut-In:

Table with 7 columns: Conductor, Surface, Production, Intermediate, Liner, Tubing. Rows include Size, Setting Depth, Amount of Cement, Top of Cement, Bottom of Cement.

Casing Fluid Level from Surface: How Determined? Date:
Casing Squeeze(s): to w / sacks of cement, to w / sacks of cement. Date:
Do you have a valid Oil & Gas Lease? Yes No
Depth and Type: Junk in Hole at Tools in Hole at Casing Leaks: Yes No Depth of casing leak(s):
Type Completion: ALT. I ALT. II Depth of: DV Tool: w / sacks of cement Port Collar: w / sack of cement
Packer Type: Size: Inch Set at: Feet
Total Depth: Plug Back Depth: Plug Back Method:

Geological Data:

Table with 4 columns: Formation Name, Formation Top, Formation Base, Completion Information. Rows 1 and 2.

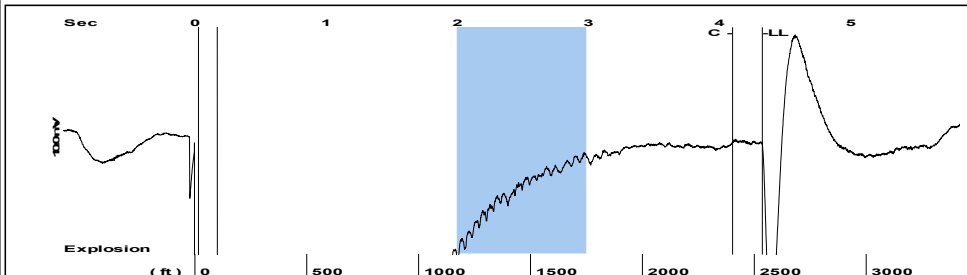
UNDER PENALTY OF PERJURY I HEREBY ATTEST THAT THE INFORMATION CONTAINED HEREIN IS TRUE AND CORRECT TO THE BEST OF MY KNOWLEDGE

Submitted Electronically

Do NOT Write in This Space - KCC USE ONLY
Date Tested: Results: Date Plugged: Date Repaired: Date Put Back in Service:
Review Completed by: Comments:
TA Approved: Yes Denied Date:

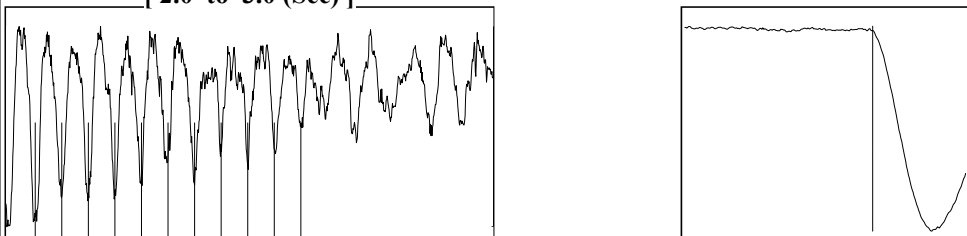
Mail to the Appropriate KCC Conservation Office:

Table with 3 columns: District Office, Address, Phone. Rows for District Office #1, #2, #3, #4.

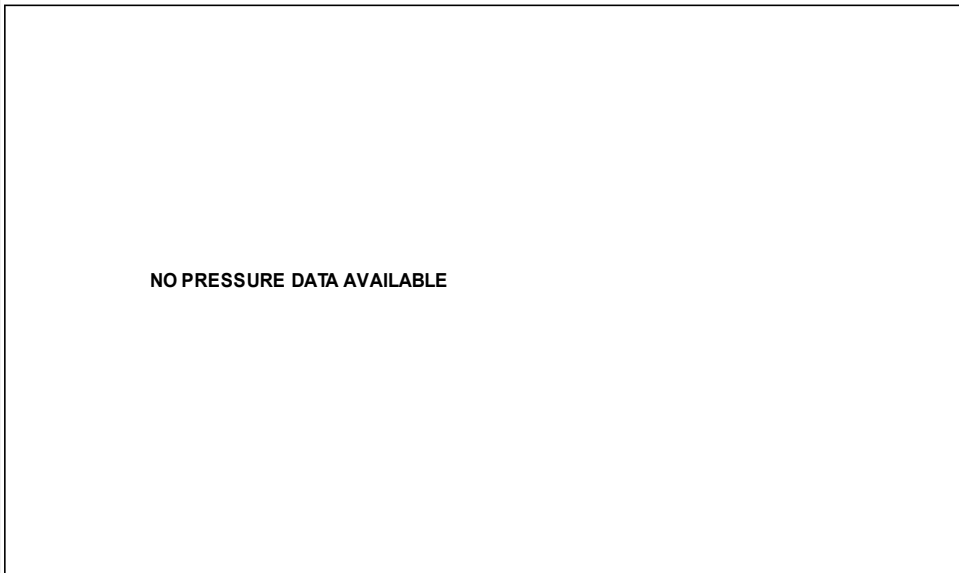


Filter Type High Pass Automatic Collar Count Yes Time 4.326 sec
 Manual Acoustic Velocity 1163.3 ft/s Manual JTS/sec 18.3486 Joints 79.9859 Jts
 Depth 2535.55 ft

[2.0 to 3.0 (Sec)]

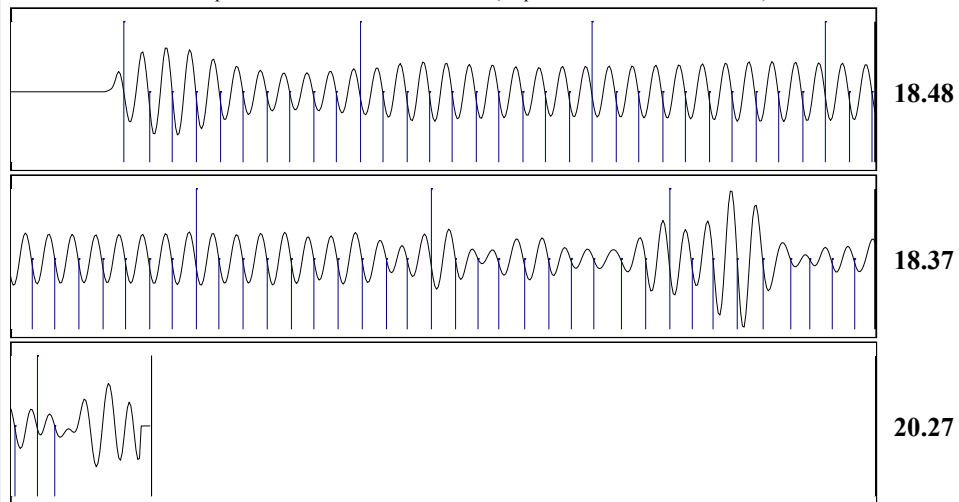


Analysis Method: Automatic



Change in Pressure 0.00 psi PT 14681
 Range 0 - ? psi
 Change in Time 0.00 min

<p>Production Current Potential</p> <p>Oil - * - BBL/D</p> <p>Water - * - BBL/D</p> <p>Gas - * - Mscf/D</p> <p>IPR Method Vogel</p> <p>PBHP/SBHP - * -</p> <p>Production Efficiency 0.0</p> <p>Oil 40 deg.API</p> <p>Water 1.05 Sp.Gr.H2O</p> <p>Gas 0.82 Sp.Gr.AIR</p> <p>Acoustic Velocity 1172.24 ft/s</p> <p>Formation Submergence</p> <p>Total Gaseous Liquid Column HT (TVD) 1023 ft</p> <p>Equivalent Gas Free Liquid HT (TVD) 1023 ft</p> <p>Acoustic Test</p>	<p>Casing Pressure -6.2 psi (g)</p> <p>Casing Pressure Buildup - * - psi</p> <p>Gas/Liquid Interface Pressure - * - min</p> <p>-5.6 psi (g)</p> <p>Liquid Level Depth 2535.55 ft</p> <p>Pump Intake Depth - * - ft</p> <p>Formation Depth 3559.00 ft</p>	<p>Producing</p> <p>Annular Gas Flow 0 Mscf/D</p> <p>% Liquid 100 %</p> <p>Pump Intake - * - psi (g)</p> <p>Producing BHP 459.7 psi (g)</p> <p>Static BHP - * - psi (g)</p>
--	--	---



Acoustic Velocity 1172.24 ft/s Joints counted 71
 Joints Per Second 18.4896 jts/sec Joints to liquid level 79.9859
 Depth to liquid level 2535.55 ft Filter Width 16.3486 20.3486
 Automatic Collar Count Yes Time to 1st Collar 0.26 4.1

Conservation Division
District Office No. 2
3450 N. Rock Road
Building 600, Suite 601
Wichita, KS 67226



Phone: 316-337-7400
Fax: 316-630-4005
<http://kcc.ks.gov/>

Susan K. Duffy, Chair
Dwight D. Keen, Commissioner
Andrew J. French, Commissioner

Laura Kelly, Governor

November 03, 2020

Melissa Woydziak
Hoffman Resources LLC
165 WEST 1ST STREET
PO BOX 387
HOISINGTON, KS 67544-0387

Re: Temporary Abandonment
API 15-159-21797-00-00
H ROTH 9
NE/4 Sec.29-19S-10W
Rice County, Kansas

Dear Melissa Woydziak:

"Your temporary abandonment (TA) application for the well listed above has been approved. In accordance with K.A.R. 82-3-111 the TA status of this well will expire 11/03/2021.

- * If you return this well to service or plug it, please notify the District Office.
- * If you sell this well you are required to file a Transfer of Operator form, T-1.
- * If the well will remain temporarily abandoned, you must submit a new TA application, CP-111, before 11/03/2021.

You may contact me at the number above if you have questions.

Very truly yours,

Keith Karlin ECRS"