

KANSAS CORPORATION COMMISSION
OIL & GAS CONSERVATION DIVISION

TEMPORARY ABANDONMENT WELL APPLICATION

OPERATOR: License#
Name:
Address 1:
Address 2:
City: State: Zip:
Contact Person:
Phone:
Contact Person Email:
Field Contact Person:
Field Contact Person Phone:

API No. 15-
Spot Description:
Sec. Twp. S. R.
GPS Location: Lat: Long:
Datum: NAD27 NAD83 WGS84
County: Elevation:
Lease Name: Well #:
Well Type: Oil Gas OG WSW Other:
SWD Permit #: ENHR Permit #:
Gas Storage Permit #:
Spud Date: Date Shut-In:

Table with 7 columns: Conductor, Surface, Production, Intermediate, Liner, Tubing. Rows include Size, Setting Depth, Amount of Cement, Top of Cement, Bottom of Cement.

Casing Fluid Level from Surface: How Determined? Date:
Casing Squeeze(s): to w / sacks of cement, to w / sacks of cement. Date:
Do you have a valid Oil & Gas Lease? Yes No
Depth and Type: Junk in Hole at Tools in Hole at Casing Leaks: Yes No Depth of casing leak(s):
Type Completion: ALT. I ALT. II Depth of: DV Tool: w / sacks of cement Port Collar: w / sack of cement
Packer Type: Size: Inch Set at: Feet
Total Depth: Plug Back Depth: Plug Back Method:

Geological Data:

Table with 4 columns: Formation Name, Formation Top, Formation Base, Completion Information. Rows 1 and 2.

UNDER PENALTY OF PERJURY I HEREBY ATTEST THAT THE INFORMATION CONTAINED HEREIN IS TRUE AND CORRECT TO THE BEST OF MY KNOWLEDGE

Submitted Electronically

Do NOT Write in This Space - KCC USE ONLY
Date Tested: Results: Date Plugged: Date Repaired: Date Put Back in Service:
Review Completed by: Comments:
TA Approved: Yes Denied Date:

Mail to the Appropriate KCC Conservation Office:

Table with 3 columns: District Office #, Address, Phone. Rows 1-4.

940-767-4334

ECHOMETER COMPANY PHONE-940-767-4334

ECHOMETER COMPANY PHONE-940-767-4334

ECHOMETER COMPANY PHONE-940-767

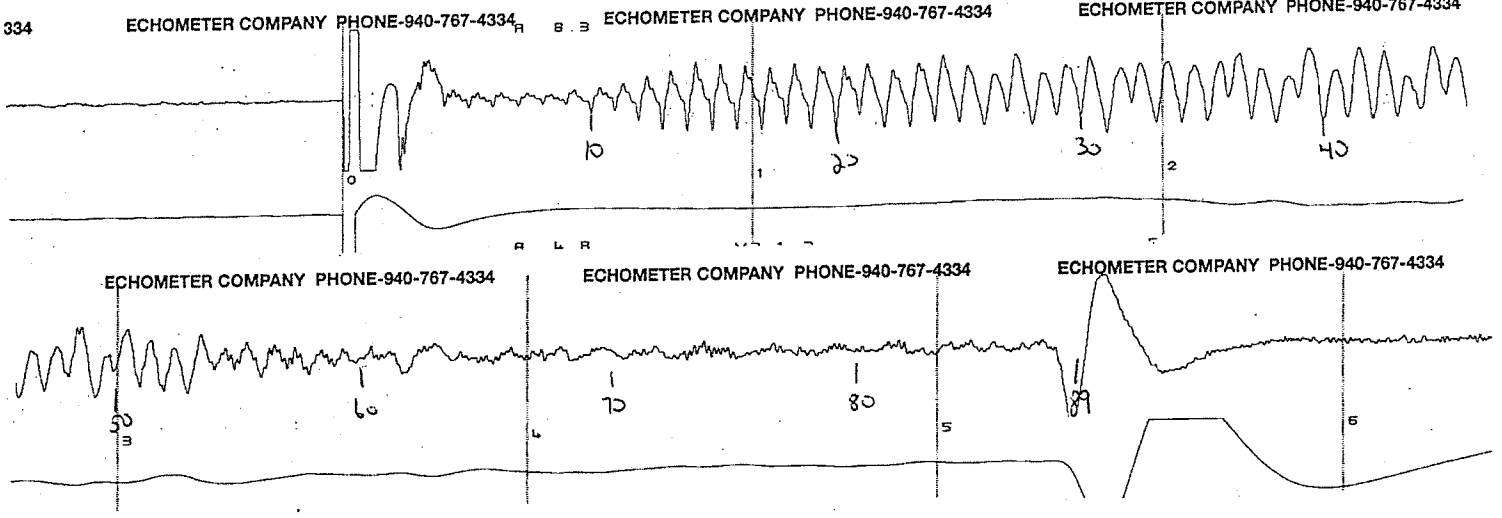
WELL Keller A2A TA PL
 CASING PRESSURE
 ΔP
 ΔT
 PRODUCTION RATE.....

JOINTS TO LIQUID..... 89 JTF
 DISTANCE TO LIQUID..... 2808 FT
 PBHP 1041 FAP
 SBHP
 PROD RATE EFF, %
 MAX PRODUCTION

11/02/2020 09:18:39
 QUIET WELL
 UPPER COLLARS A: 8.3
 P-P 0.126 mV

LIQUID LEVEL A: 4.8
 P-P 0.526 mV

UC
 GENERATE PULSE
 12.5 VOLTS



Conservation Division
District Office No. 4
2301 E. 13th Street
Hays, KS 67601-2651



Phone: 785-261-6250
Fax: 785-625-0564
<http://kcc.ks.gov/>

Susan K. Duffy, Chair
Dwight D. Keen, Commissioner
Andrew J. French, Commissioner

Laura Kelly, Governor

November 06, 2020

Rob Kramer
Murfin Drilling Co., Inc.
250 N WATER STE 300
WICHITA, KS 67202-1216

Re: Temporary Abandonment
API 15-195-21652-00-00
KELLER 2A
NW/4 Sec.17-13S-21W
Trego County, Kansas

Dear Rob Kramer:

"Your temporary abandonment (TA) application for the well listed above has been approved. In accordance with K.A.R. 82-3-111 the TA status of this well will expire 11/06/2021.

- * If you return this well to service or plug it, please notify the District Office.
- * If you sell this well you are required to file a Transfer of Operator form, T-1.
- * If the well will remain temporarily abandoned, you must submit a new TA application, CP-111, before 11/06/2021.

You may contact me at the number above if you have questions.

Very truly yours,

RICHARD WILLIAMS"