

KANSAS CORPORATION COMMISSION
OIL & GAS CONSERVATION DIVISION

TEMPORARY ABANDONMENT WELL APPLICATION

OPERATOR: License#
Name:
Address 1:
Address 2:
City: State: Zip:
Contact Person:
Phone:
Contact Person Email:
Field Contact Person:
Field Contact Person Phone:

API No. 15-
Spot Description:
Sec. Twp. S. R.
GPS Location: Lat: Long:
Datum: NAD27 NAD83 WGS84
County: Elevation:
Lease Name: Well #:
Well Type: Oil Gas OG WSW Other:
SWD Permit #: ENHR Permit #:
Gas Storage Permit #:
Spud Date: Date Shut-In:

Table with 7 columns: Conductor, Surface, Production, Intermediate, Liner, Tubing. Rows include Size, Setting Depth, Amount of Cement, Top of Cement, Bottom of Cement.

Casing Fluid Level from Surface: How Determined? Date:
Casing Squeeze(s): to w / sacks of cement, to w / sacks of cement. Date:
Do you have a valid Oil & Gas Lease? Yes No
Depth and Type: Junk in Hole at Tools in Hole at Casing Leaks: Yes No Depth of casing leak(s):
Type Completion: ALT. I ALT. II Depth of: DV Tool: w / sacks of cement Port Collar: w / sack of cement
Packer Type: Size: Inch Set at: Feet
Total Depth: Plug Back Depth: Plug Back Method:

Geological Data:

Table with 4 columns: Formation Name, Formation Top, Formation Base, Completion Information. Rows 1 and 2.

UNDER PENALTY OF PERJURY I HEREBY ATTEST THAT THE INFORMATION CONTAINED HEREIN IS TRUE AND CORRECT TO THE BEST OF MY KNOWLEDGE

Submitted Electronically

Form with fields: Do NOT Write in This Space - KCC USE ONLY, Date Tested, Results, Date Plugged, Date Repaired, Date Put Back in Service, Review Completed by, Comments, TA Approved: Yes Denied, Date.

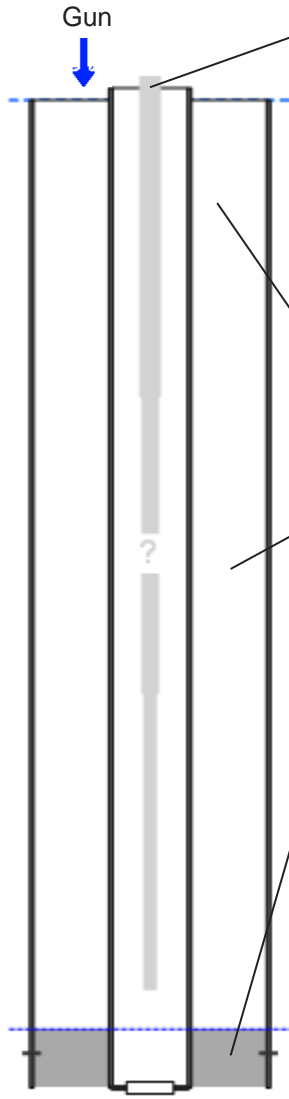
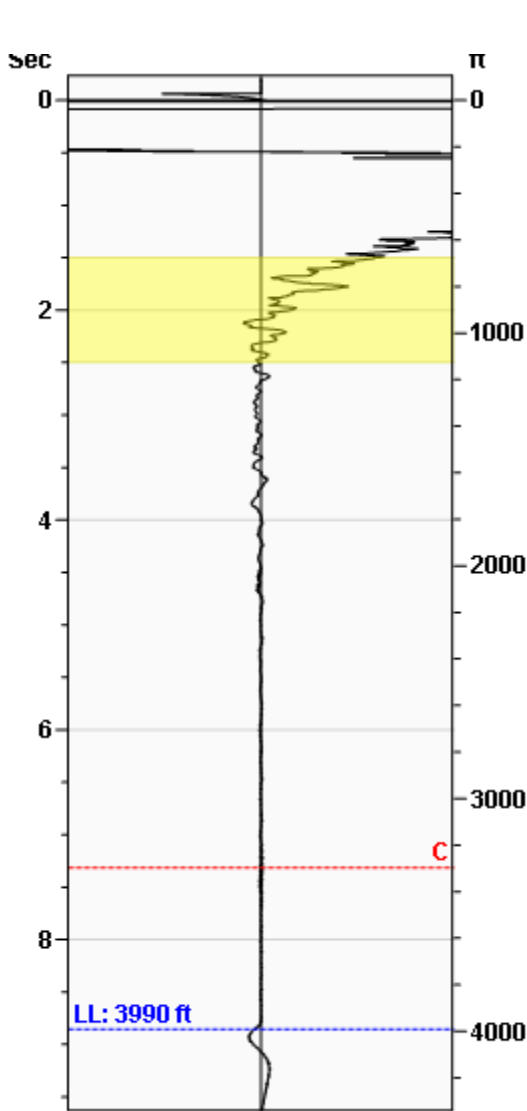
Mail to the Appropriate KCC Conservation Office:

Table with 2 columns: Office Address, Phone. Rows for KCC District Office #1, #2, #3, #4.

WG Unknown

**Fluid Above Pump
Liquid Level**

**253 ft
3990 ft**



Production			
Date Entered			11/16/20
	Current	Potential	
Oil	**	**	BBL/D
Water	**	**	BBL/D
Gas	**	**	Mscf/D
IPR Method			Vogel

Casing Pressure	
Pressure	-1.8 psi (g)

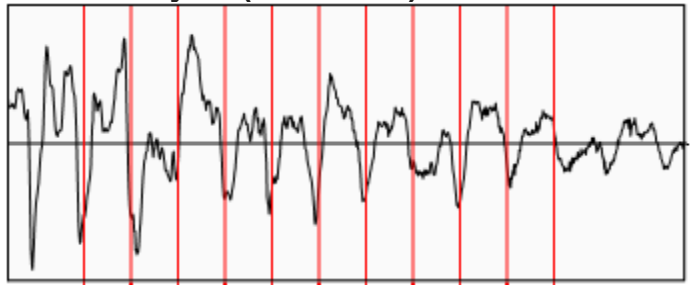
Annular Gas Flow	
Gas Flow	0.0 Mscf/D

Fluid Properties	
Gas Free Above Pump	253 ft
% Liquid Above Pump	100.00%
% Liquid Below Pump	**

Wellbore Pressures	
PIP	87.0 psi (g) @ 4243 ft
PBHP	39.1 psi (g) @ 4103 ft
SBHP	51.5 psi (g) @ 4103 ft

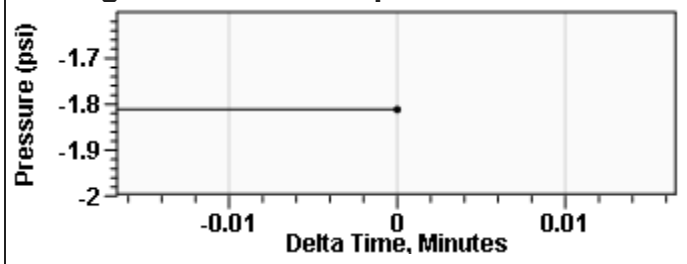
Depths	
Pump Intake Depth	4243 ft
Formation Depth	4103 ft

Collar Analysis (Automatic)



Average Acoustic Velocity 902 ft/s
 Average Joints Per Sec. 14.45 Jts/sec
 Joints To Liquid 127.89 Jts

Casing Pressure Buildup



Casing Pressure -1.8 psi (g)
 Buildup 0.0 psi (g)
 Buildup Time 0 sec
 Gas Gravity 1.0792 Air = 1

Comments and Recommendations

11-16-20 - Acoustic Test

Echometer Company
 5001 Ditto Lane
 Wichita Falls, TX 76302
 (940) 767-4334
 info@echometer.com

Conservation Division
District Office No. 4
2301 E. 13th Street
Hays, KS 67601-2651



Phone: 785-261-6250
Fax: 785-625-0564
<http://kcc.ks.gov/>

Susan K. Duffy, Chair
Dwight D. Keen, Commissioner
Andrew J. French, Commissioner

Laura Kelly, Governor

November 23, 2020

Rich Pancake
Murfin Drilling Co., Inc.
250 N WATER STE 300
WICHITA, KS 67202-1216

Re: Temporary Abandonment
API 15-153-20181-00-00
CAHOJ NE UNIT B 5-1
NE/4 Sec.11-01S-34W
Rawlins County, Kansas

Dear Rich Pancake:

"Your temporary abandonment (TA) application for the well listed above has been approved. In accordance with K.A.R. 82-3-111 the TA status of this well will expire 11/23/2021.

- * If you return this well to service or plug it, please notify the District Office.
- * If you sell this well you are required to file a Transfer of Operator form, T-1.
- * If the well will remain temporarily abandoned, you must submit a new TA application, CP-111, before 11/23/2021.

You may contact me at the number above if you have questions.

Very truly yours,

RICHARD WILLIAMS"