

KANSAS CORPORATION COMMISSION
OIL & GAS CONSERVATION DIVISION

TEMPORARY ABANDONMENT WELL APPLICATION

OPERATOR: License#
Name:
Address 1:
Address 2:
City: State: Zip:
Contact Person:
Phone:
Contact Person Email:
Field Contact Person:
Field Contact Person Phone:

API No. 15-
Spot Description:
Sec. Twp. S. R.
GPS Location: Lat: Long:
Datum: NAD27 NAD83 WGS84
County: Elevation:
Lease Name: Well #:
Well Type: Oil Gas OG WSW Other:
SWD Permit #: ENHR Permit #:
Gas Storage Permit #:
Spud Date: Date Shut-In:

Table with 7 columns: Conductor, Surface, Production, Intermediate, Liner, Tubing. Rows include Size, Setting Depth, Amount of Cement, Top of Cement, Bottom of Cement.

Casing Fluid Level from Surface: How Determined? Date:
Casing Squeeze(s): to w / sacks of cement, to w / sacks of cement. Date:
Do you have a valid Oil & Gas Lease? Yes No
Depth and Type: Junk in Hole at Tools in Hole at Casing Leaks: Yes No Depth of casing leak(s):
Type Completion: ALT. I ALT. II Depth of: DV Tool: w / sacks of cement Port Collar: w / sack of cement
Packer Type: Size: Inch Set at: Feet
Total Depth: Plug Back Depth: Plug Back Method:

Geological Data:

Table with 4 columns: Formation Name, Formation Top, Formation Base, Completion Information. Rows 1 and 2.

UNDER PENALTY OF PERJURY I HEREBY ATTEST THAT THE INFORMATION CONTAINED HEREIN IS TRUE AND CORRECT TO THE BEST OF MY KNOWLEDGE

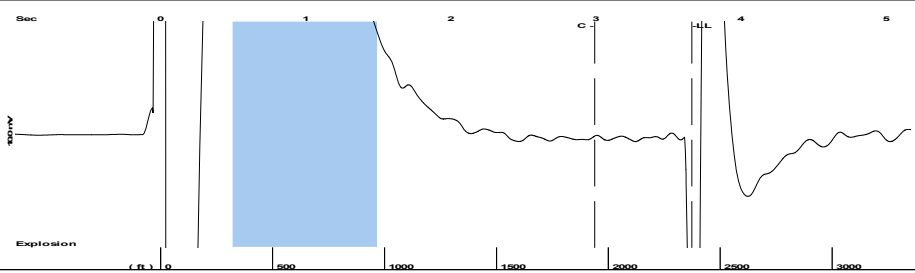
Submitted Electronically

Do NOT Write in This Space - KCC USE ONLY
Date Tested: Results: Date Plugged: Date Repaired: Date Put Back in Service:
Review Completed by: Comments:
TA Approved: Yes Denied Date:

Mail to the Appropriate KCC Conservation Office:

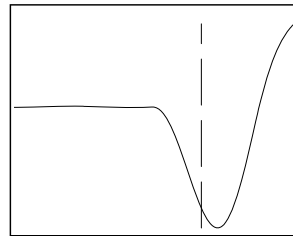
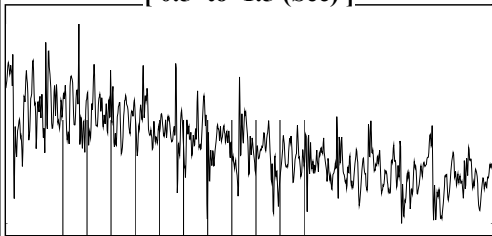
Table with 2 columns: Office Address, Phone. Rows for KCC District Office #1, #2, #3, #4.

Group: Herbel B Well: Herbel B #8 (acquired on: 11/18/20 13:57:14)



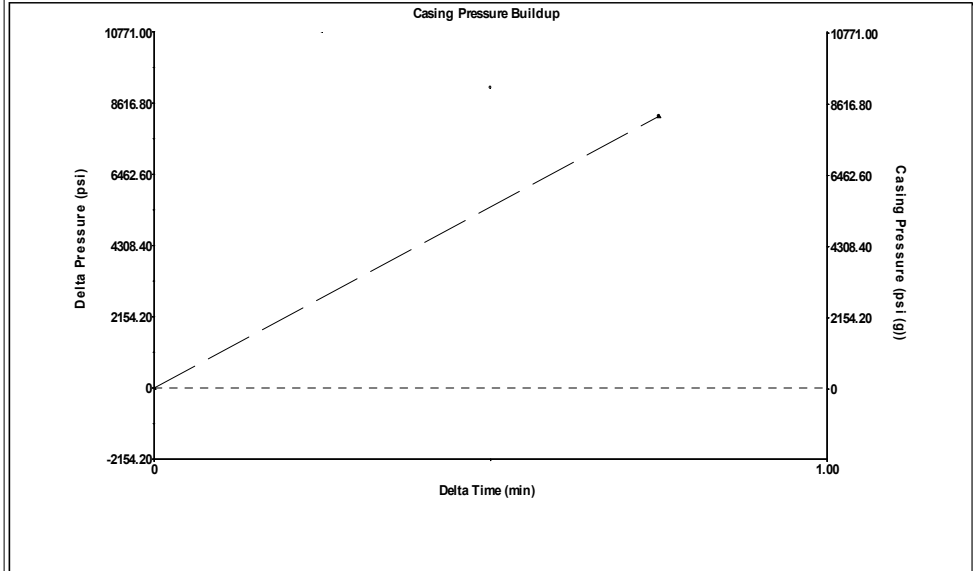
Filter Type High Pass Automatic Collar Count Yes Time 3.661 sec
 Manual Acoustic Velo 1278.23 ft/s Manual JTS/sec 20.1613 Joints 74.8621 Jts
 Depth 2373.13 ft

[0.5 to 1.5 (Sec)]



Analysis Method: Automatic

Group: Herbel B Well: Herbel B #8 (acquired on: 11/18/20 13:57:14)

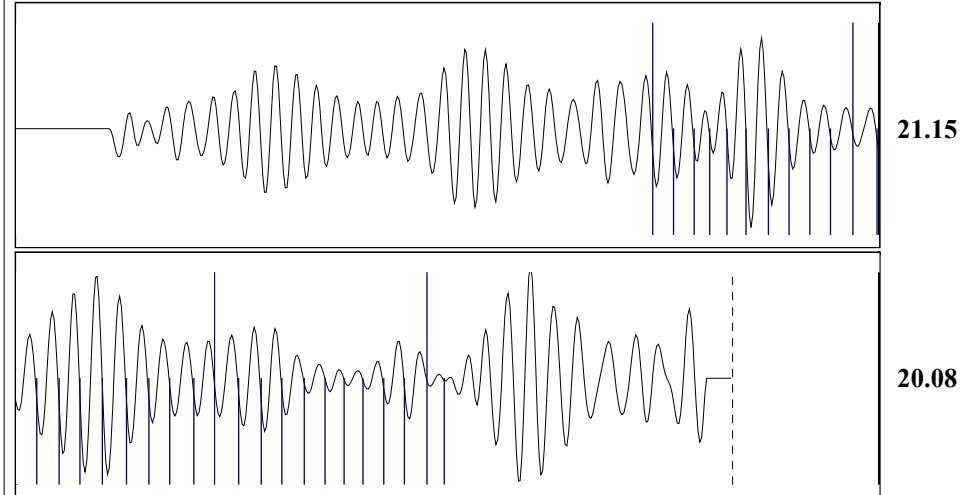


Change in Pressure 8217.98 psi PT6067
 Change in Time 0.75 min Range 0 - ? psi

Group: Herbel B Well: Herbel B #8 (acquired on: 11/18/20 13:57:14)

| | | | | | | | | |
|--------------------------------------|----------------|------------------|--------|------------------------|---------|--------------------|------------------|---------------|
| Production | | Potential | | Casing Pressure | | | Producing | |
| Current | - * - | - * - | BBL/D | 35.0 | psi (g) | | Annular | |
| Oil | - * - | - * - | BBL/D | 8218.0 | psi | | Gas Flow | 314494 Mscf/D |
| Water | - * - | - * - | Mscf/D | 0.75 | min | | % Liquid | 19 % |
| Gas | - * - | - * - | | 37.9 | psi (g) | Liquid Level Depth | 2373.13 ft | |
| IPR Method | Vogel | | | | | Pump Intake Depth | 2975.00 ft | |
| PBHP/SBHP | - * - | | | | | Formation Depth | 3087.00 ft | |
| Production Efficiency | 0.0 | | | | | Pump Intake | 78.0 psi (g) | |
| Oil | 36 deg.API | | | | | Producing BHP | 97.6 psi (g) | |
| Water | 1.08 Sp.Gr.H2O | | | | | Static BHP | - * - psi (g) | |
| Gas | 0.68 Sp.Gr.AIR | | | | | | | |
| Acoustic Velocity | 1296.44 ft/s | | | | | | | |
| Formation Submergence | | | | 602 | ft | | | |
| Total Gaseous Liquid Column HT (TVD) | | | | 113 | ft | | | |
| Equivalent Gas Free Liquid HT (TVD) | | | | | | | | |
| Acoustic Test | | | | | | | | |

Group: Herbel B Well: Herbel B #8 (acquired on: 11/18/20 13:57:14)



Acoustic Velocity 1296.44 ft/s Joints counted 31
 Joints Per Second 20.4485 jts/sec Joints to liquid level 74.8621
 Depth to liquid level 2373.13 ft Filter Width 18.1613 22.1613
 Automatic Collar Count Yes Time to 1st Collar 1.476 2.992

Conservation Division
District Office No. 4
2301 E. 13th Street
Hays, KS 67601-2651



Phone: 785-261-6250
Fax: 785-625-0564
<http://kcc.ks.gov/>

Susan K. Duffy, Chair
Dwight D. Keen, Commissioner
Andrew J. French, Commissioner

Laura Kelly, Governor

November 23, 2020

Gavin Ramsay
Fossil Creek Energy, LLC
PO BOX 915
RUSSELL, KS 67665-0915

Re: Temporary Abandonment
API 15-167-40355-00-00
HERBEL B 8
SW/4 Sec.26-14S-14W
Russell County, Kansas

Dear Gavin Ramsay:

"Your temporary abandonment (TA) application for the well listed above has been approved. In accordance with K.A.R. 82-3-111 the TA status of this well will expire 11/23/2021.

- * If you return this well to service or plug it, please notify the District Office.
- * If you sell this well you are required to file a Transfer of Operator form, T-1.
- * If the well will remain temporarily abandoned, you must submit a new TA application, CP-111, before 11/23/2021.

You may contact me at the number above if you have questions.

Very truly yours,

RICHARD WILLIAMS"