

KANSAS CORPORATION COMMISSION
OIL & GAS CONSERVATION DIVISION

TEMPORARY ABANDONMENT WELL APPLICATION

OPERATOR: License#
Name:
Address 1:
Address 2:
City: State: Zip:
Contact Person:
Phone:
Contact Person Email:
Field Contact Person:
Field Contact Person Phone:

API No. 15-
Spot Description:
Sec. Twp. S. R.
GPS Location: Lat: Long:
Datum: NAD27 NAD83 WGS84
County: Elevation:
Lease Name: Well #:
Well Type: Oil Gas OG WSW Other:
SWD Permit #: ENHR Permit #:
Gas Storage Permit #:
Spud Date: Date Shut-In:

Table with 7 columns: Conductor, Surface, Production, Intermediate, Liner, Tubing. Rows include Size, Setting Depth, Amount of Cement, Top of Cement, Bottom of Cement.

Casing Fluid Level from Surface: How Determined? Date:
Casing Squeeze(s): to w / sacks of cement, to w / sacks of cement. Date:
Do you have a valid Oil & Gas Lease? Yes No
Depth and Type: Junk in Hole at Tools in Hole at Casing Leaks: Yes No Depth of casing leak(s):
Type Completion: ALT. I ALT. II Depth of: DV Tool: w / sacks of cement Port Collar: w / sack of cement
Packer Type: Size: Inch Set at: Feet
Total Depth: Plug Back Depth: Plug Back Method:

Geological Date:

Table with 4 columns: Formation Name, Formation Top, Formation Base, Completion Information. Rows 1 and 2.

UNDER PENALTY OF PERJURY I HEREBY ATTEST THAT THE INFORMATION CONTAINED HEREIN IS TRUE AND CORRECT TO THE BEST OF MY KNOWLEDGE

Submitted Electronically

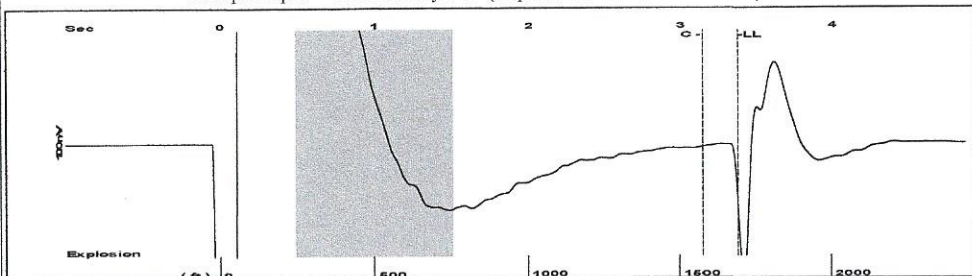
Do NOT Write in This Space - KCC USE ONLY
Date Tested: Results: Date Plugged: Date Repaired: Date Put Back in Service:
Review Completed by: Comments:
TA Approved: Yes Denied Date:

Mail to the Appropriate KCC Conservation Office:

Table with 2 columns: Office Address, Phone. Rows for District Office #1, #2, #3, #4.

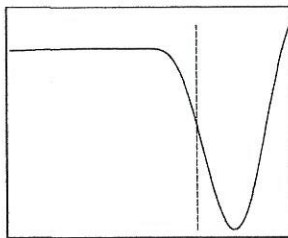
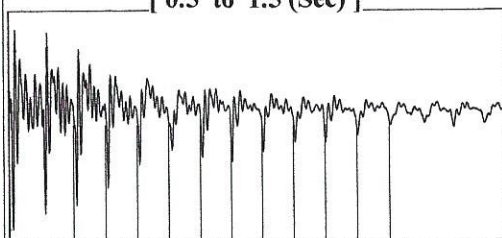


Group: Belpre Well: Embry 2-23 (acquired on: 11/17/20 11:26:43)



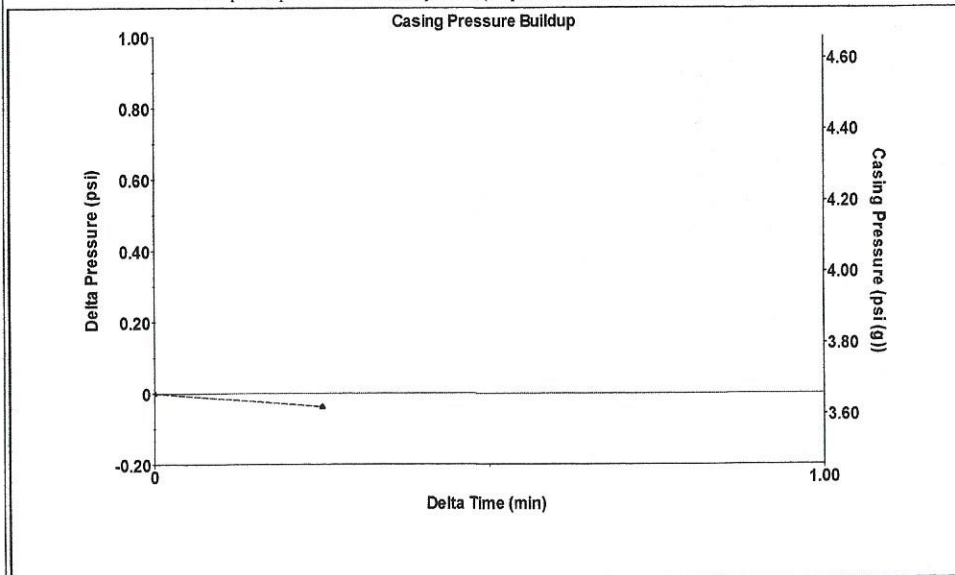
Filter Type High Pass Automatic Collar Count Yes Time 3.37 sec  
 Manual Acoustic Velo 990.625 ft/s Manual JTS/sec 15.625 Joints 53.3228 Jts  
 Depth 1690.33 ft

[ 0.5 to 1.5 (Sec) ]



Analysis Method: Automatic

Group: Belpre Well: Embry 2-23 (acquired on: 11/17/20 11:26:43)



Change in Pressure -0.04 psi PT13440  
 Range 0 - ? psi  
 Change in Time 0.25 min

Group: Belpre Well: Embry 2-23 (acquired on: 11/17/20 11:26:43)

Production  
 Current Potential  
 Oil - \* - \* - BBL/D  
 Water - \* - \* - BBL/D  
 Gas - \* - \* - Mscf/D

IPR Method Vogel  
 PBHP/SBHP - \* -  
 Production Efficiency 0.0

Oil 40 deg.API  
 Water 1.05 Sp.Gr.H2O  
 Gas 0.97 Sp.Gr.AIR

Acoustic Velocity 1003.16 ft/s

Formation Submergence  
 Total Gaseous Liquid Column HT (TVD) 2106 ft  
 Equivalent Gas Free Liquid HT (TVD) 2106 ft

Acoustic Test

Casing Pressure 3.7 psi (g)  
 Casing Pressure Buildup -0.0 psi  
 0.25 min  
 Gas/Liquid Interface Pressure 4.7 psi (g)

Liquid Level Depth 1690.33 ft

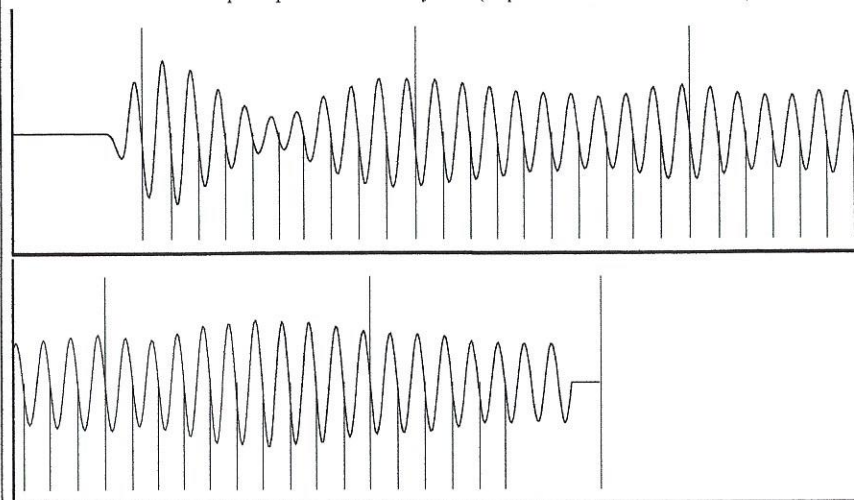
Pump Intake Depth 3796.00 ft  
 Formation Depth 3790.00 ft



Producing  
 Annular Gas Flow 0 Mscf/D  
 % Liquid 100 %

Pump Intake 706.5 psi (g)  
 Producing BHP 704.6 psi (g)  
 Static BHP - \* - psi (g)

Group: Belpre Well: Embry 2-23 (acquired on: 11/17/20 11:26:43)



Acoustic Velocity 1003.16 ft/s Joints counted 45  
 Joints Per Second 15.8228 jts/sec Joints to liquid level 53.3228  
 Depth to liquid level 1690.33 ft Filter Width 13.625 17.625  
 Automatic Collar Count Yes Time to 1st Collar 0.3 3.144

November 24, 2020

Loveness Mpanje  
F. G. Holl Company L.L.C.  
9431 E CENTRAL STE 100  
WICHITA, KS 67206-2563

Re: Temporary Abandonment  
API 15-047-20943-00-00  
EMBRY 2  
SW/4 Sec.23-24S-16W  
Edwards County, Kansas

Dear Loveness Mpanje:

"Your temporary abandonment (TA) application for the well listed above has been approved. In accordance with K.A.R. 82-3-111 the TA status of this well will expire 11/24/2021.

- \* If you return this well to service or plug it, please notify the District Office.
- \* If you sell this well you are required to file a Transfer of Operator form, T-1.
- \* If the well will remain temporarily abandoned, you must submit a new TA application, CP-111, before 11/24/2021.

You may contact me at the number above if you have questions.

Very truly yours,

Michael Maier"