

KANSAS CORPORATION COMMISSION
OIL & GAS CONSERVATION DIVISION

TEMPORARY ABANDONMENT WELL APPLICATION

OPERATOR: License#
Name:
Address 1:
Address 2:
City: State: Zip:
Contact Person:
Phone:
Contact Person Email:
Field Contact Person:
Field Contact Person Phone:

API No. 15-
Spot Description:
Sec. Twp. S. R.
GPS Location: Lat: Long:
Datum: NAD27 NAD83 WGS84
County: Elevation:
Lease Name: Well #:
Well Type: Oil Gas OG WSW Other:
SWD Permit #: ENHR Permit #:
Gas Storage Permit #:
Spud Date: Date Shut-In:

Table with 7 columns: Conductor, Surface, Production, Intermediate, Liner, Tubing. Rows include Size, Setting Depth, Amount of Cement, Top of Cement, Bottom of Cement.

Casing Fluid Level from Surface: How Determined? Date:
Casing Squeeze(s): to w / sacks of cement, to w / sacks of cement. Date:
Do you have a valid Oil & Gas Lease? Yes No
Depth and Type: Junk in Hole at Tools in Hole at Casing Leaks: Yes No Depth of casing leak(s):
Type Completion: ALT. I ALT. II Depth of: DV Tool: w / sacks of cement Port Collar: w / sack of cement
Packer Type: Size: Inch Set at: Feet
Total Depth: Plug Back Depth: Plug Back Method:

Geological Data:

Table with 4 columns: Formation Name, Formation Top, Formation Base, Completion Information. Rows 1 and 2.

UNDER PENALTY OF PERJURY I HEREBY ATTEST THAT THE INFORMATION CONTAINED HEREIN IS TRUE AND CORRECT TO THE BEST OF MY KNOWLEDGE

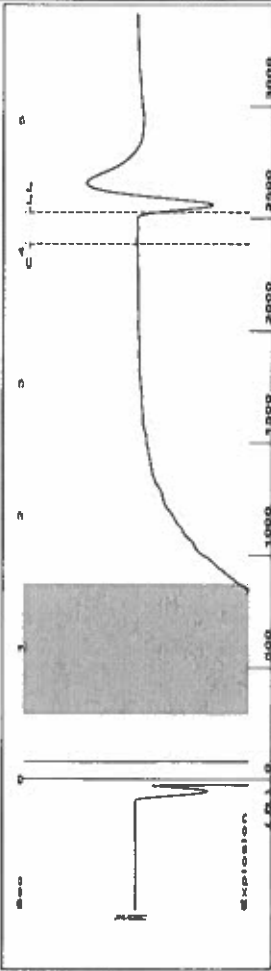
Submitted Electronically

Do NOT Write in This Space - KCC USE ONLY
Date Tested: Results: Date Plugged: Date Repaired: Date Put Back in Service:
Review Completed by: Comments:
TA Approved: Yes Denied Date:

Mail to the Appropriate KCC Conservation Office:

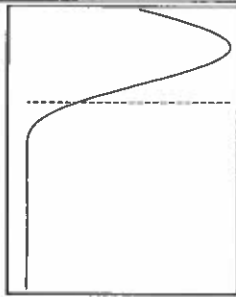
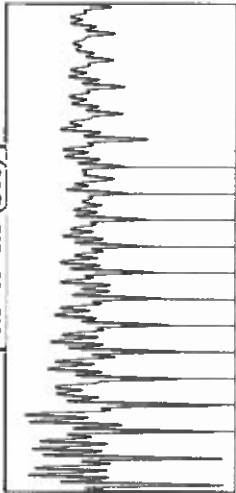
Table with 2 columns: Office Address, Phone. Rows for District Office #1, #2, #3, #4.

Group: TAD Well: Mc Williams b-2 (acquired on: 11/24/20 14:30:16)



Filter Type High Pass Automatic Collar Count Yes Time 4.3 sec
 Manual Acoustic Velocity 169.74 ft/s Manual JTS/sec 18.4502 Joints 79.6296 Jts
 Depth 2524.26 ft

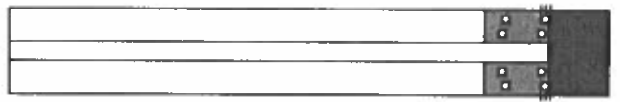
0.5 to 1.5 (Sec)



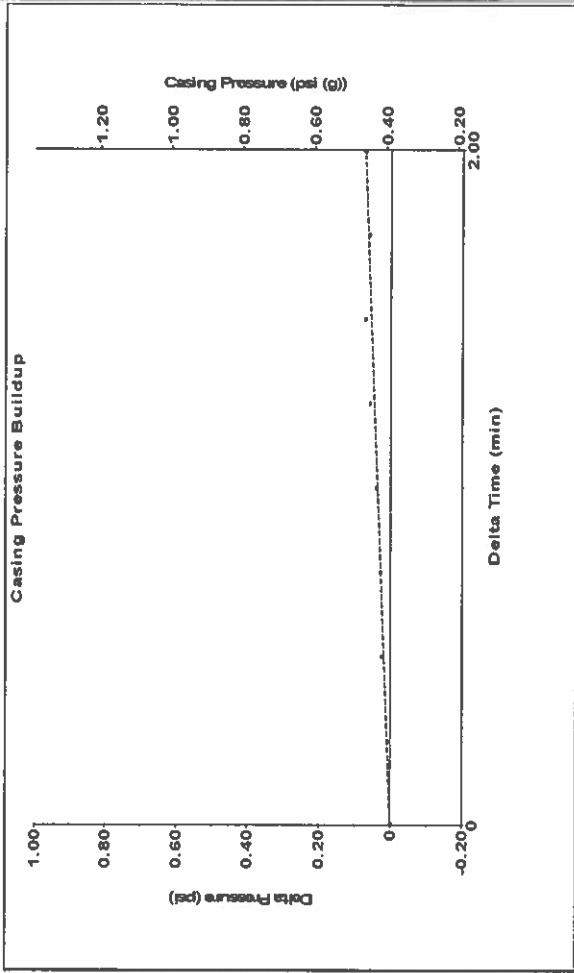
Analysis Method: Automatic

Group: TAD Well: Mc Williams b-2 (acquired on: 11/24/20 14:30:16)

Production	Potential	Casing Pressure	Producing
Oil -*	BBL/D	0.4 psi (g)	Annular Gas Flow 1 Mscf/D
Water -*	BBL/D	0.072 psi	% Liquid 96 %
Gas -*	Mscf/D	2.00 min	
IPR Method	Vogel	Gas/Liquid Interface Pressure	
PBHP/SBHP	-*-	1.5 psi (g)	
Production Efficiency	0.0	Liquid Level Depth	
Oil 40 deg.API		2524.26 ft	
Water 1.05 Sp.Gr.H2O		Pump Intake Depth	
Gas 0.82 Sp.Gr.AIR		2916.00 ft	
Acoustic Velocity	1174.07 ft/s	Formation Depth	
		2897.00 ft	
Formation Submergence			
Total Gaseous Liquid Column HT (TVD)	392 ft		
Equivalent Gas Free Liquid HT (TVD)	377 ft		
Acoustic Test			

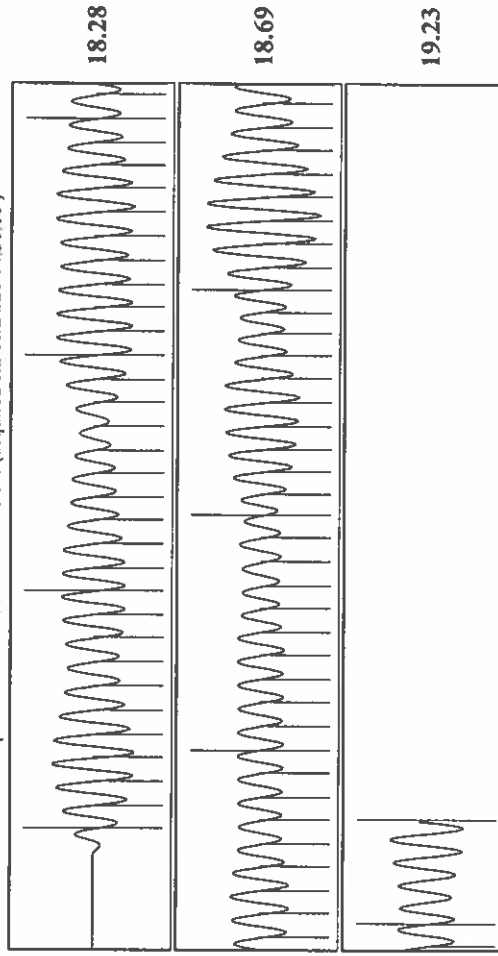


Group: TAD Well: Mc Williams b-2 (acquired on: 11/24/20 14:30:16)



Change in Pressure 0.07 psi PT 6902 Range
 Change in Time 2.00 min

Group: TAD Well: Mc Williams b-2 (acquired on: 11/24/20 14:30:16)



Acoustic Velocity 1174.07 ft/s Joints counted 70
 Joints Per Second 18.5185 jts/sec Joints to liquid level 79.6296
 Depth to liquid level 2524.26 ft Filter Width 16.4502
 Automatic Collar Count Yes Time to 1st Collar 0.28
 4.06

December 01, 2020

Katherine McClurkan
Merit Energy Company, LLC
13727 Noel Road, Suite 1200
Dallas, TX 75240-7362

Re: Temporary Abandonment
API 15-055-21138-00-00
MCWILLIAMS B 2
SW/4 Sec.33-24S-33W
Finney County, Kansas

Dear Katherine McClurkan:

"Your temporary abandonment (TA) application for the well listed above has been approved. In accordance with K.A.R. 82-3-111 the TA status of this well will expire 12/01/2021.

- * If you return this well to service or plug it, please notify the District Office.
- * If you sell this well you are required to file a Transfer of Operator form, T-1.
- * If the well will remain temporarily abandoned, you must submit a new TA application, CP-111, before 12/01/2021.

You may contact me at the number above if you have questions.

Very truly yours,

Michael Maier"