

KANSAS CORPORATION COMMISSION
OIL & GAS CONSERVATION DIVISION

TEMPORARY ABANDONMENT WELL APPLICATION

OPERATOR: License#
Name:
Address 1:
Address 2:
City: State: Zip:
Contact Person:
Phone:
Contact Person Email:
Field Contact Person:
Field Contact Person Phone:

API No. 15-
Spot Description:
Sec. Twp. S. R.
GPS Location: Lat: Long:
Datum: NAD27 NAD83 WGS84
County: Elevation:
Lease Name: Well #:
Well Type: Oil Gas OG WSW Other:
SWD Permit #: ENHR Permit #:
Gas Storage Permit #:
Spud Date: Date Shut-In:

Table with 7 columns: Conductor, Surface, Production, Intermediate, Liner, Tubing. Rows include Size, Setting Depth, Amount of Cement, Top of Cement, Bottom of Cement.

Casing Fluid Level from Surface: How Determined? Date:
Casing Squeeze(s): to w / sacks of cement, to w / sacks of cement. Date:
Do you have a valid Oil & Gas Lease? Yes No
Depth and Type: Junk in Hole at Tools in Hole at Casing Leaks: Yes No Depth of casing leak(s):
Type Completion: ALT. I ALT. II Depth of: DV Tool: w / sacks of cement Port Collar: w / sack of cement
Packer Type: Size: Inch Set at: Feet
Total Depth: Plug Back Depth: Plug Back Method:

Geological Data:

Table with 4 columns: Formation Name, Formation Top, Formation Base, Completion Information. Rows 1 and 2.

UNDER PENALTY OF PERJURY I HEREBY ATTEST THAT THE INFORMATION CONTAINED HEREIN IS TRUE AND CORRECT TO THE BEST OF MY KNOWLEDGE

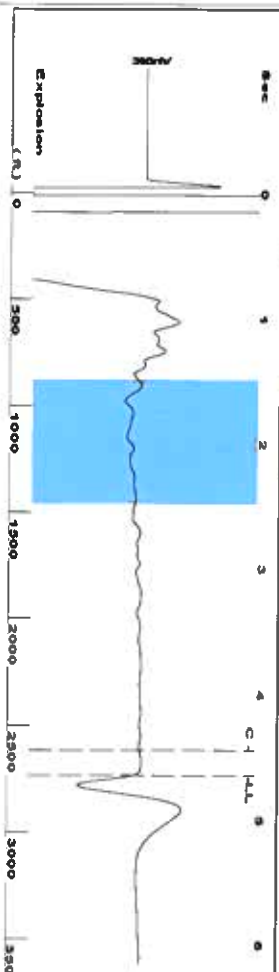
Submitted Electronically

Do NOT Write in This Space - KCC USE ONLY
Date Tested: Results: Date Plugged: Date Repaired: Date Put Back in Service:
Review Completed by: Comments:
TA Approved: Yes Denied Date:

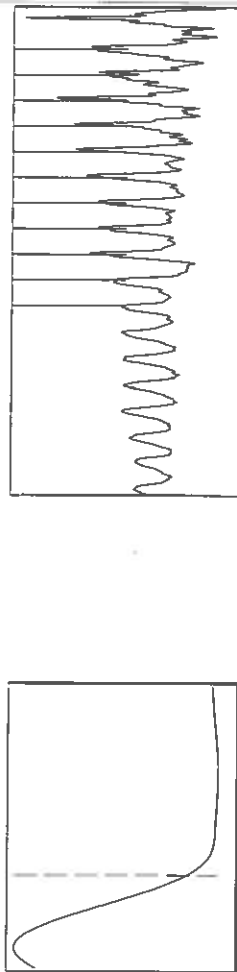
Mail to the Appropriate KCC Conservation Office:

Table with 2 columns: Office Address, Phone. Rows for KCC District Office #1, #2, #3, #4.

Group: TAD Well: emrie b-2 (acquired on: 11/25/20 12:43:35)



Filter Type: High Pass  
 Manual Acoustic Velo: 1203.04 ft/s  
 Automatic Collar Count: Yes  
 Manual JTS/sec: 18.9753  
 Time: 4.649 sec  
 Joints: 86.2203 Jts  
 Depth: 2733.18 ft



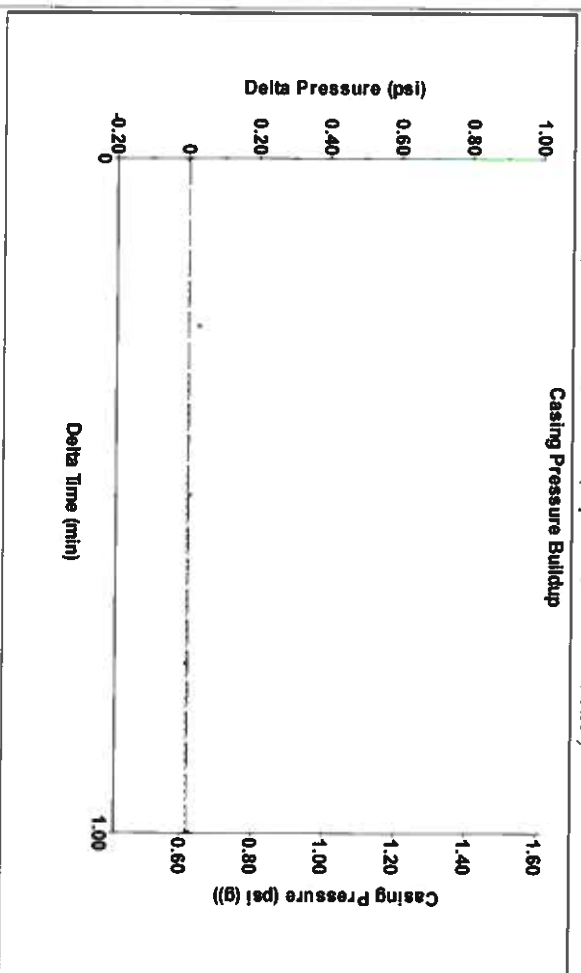
Analysis Method: Automatic

Group: TAD Well: emrie b-2 (acquired on: 11/25/20 12:43:35)

Production	Potential	Casing Pressure	Producing
Oil -*-	-*- BBL/D	0.6 psi (g)	Liquid Stream Below Tubing
Water -*-	-*- BBL/D	0.005 psi	Oil 0 %
Gas -*-	-*- Mscf/D	1.00 min	Water 100 %
IPR Method	Vogel	Gas/Liquid Interface Pressure	% Liquid
PBHP/SBHP	-*-	1.8 psi (g)	100 %
Production Efficiency	0.0	Liquid Level Depth	Liquid Below Tubing
		2733.18 ft	100 %
Oil 40 deg API		Pump Intake Depth	Pump Intake
Water 1.05 Sp Gr H2O		2944.00 ft	73.7 psi (g)
Gas 0.82 Sp Gr AIR		Formation Depth	Producing BHP
		3050.00 ft	121.9 psi (g)
Acoustic Velocity	1175.82 ft/s		Static BHP
			-* psi (g)

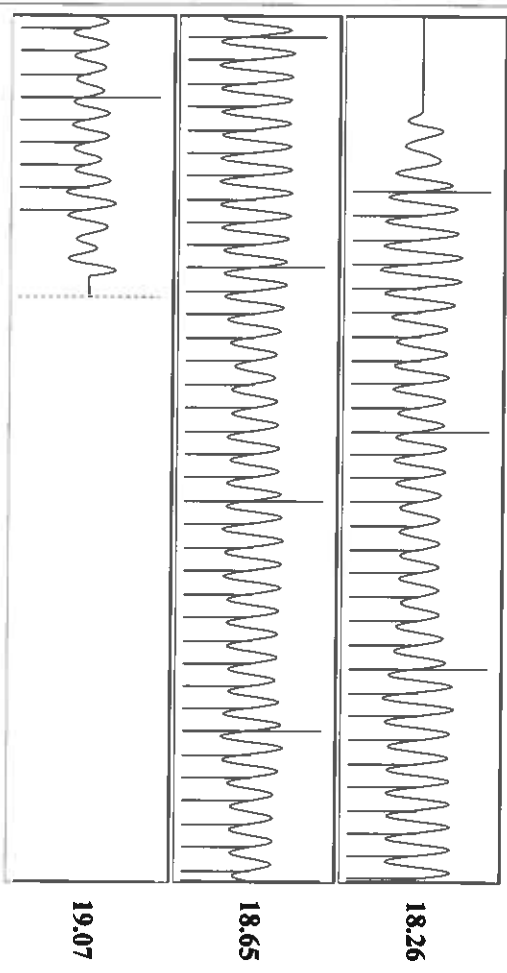


Group: TAD Well: emrie b-2 (acquired on: 11/25/20 12:43:35)



Change in Pressure: 0.00 psi  
 Change in Time: 1.00 min  
 PT14654  
 Range: 0 - 2 psi

Group: TAD Well: emrie b-2 (acquired on: 11/25/20 12:43:35)



Acoustic Velocity	Joints Per Second	Depth to liquid level	Automatic Collar Count	Joints counted	Joints to liquid level	Filter Width	Time to 1st Collar
1175.82 ft/s	18.546 jts/sec	2733.18 ft	Yes	75	86.2203	16.9753	20.9753
						0.404	4.448

December 01, 2020

Katherine McClurkan  
Merit Energy Company, LLC  
13727 Noel Road, Suite 1200  
Dallas, TX 75240

Re: Temporary Abandonment  
API 15-067-20487-00-00  
Emrie B 2  
NE/4 Sec.27-28S-35W  
Grant County, Kansas

Dear Katherine McClurkan:

"Your temporary abandonment (TA) application for the well listed above has been approved. In accordance with K.A.R. 82-3-111 the TA status of this well will expire 12/01/2021.

- \* If you return this well to service or plug it, please notify the District Office.
- \* If you sell this well you are required to file a Transfer of Operator form, T-1.
- \* If the well will remain temporarily abandoned, you must submit a new TA application, CP-111, before 12/01/2021.

You may contact me at the number above if you have questions.

Very truly yours,

Michael Maier"