

KANSAS CORPORATION COMMISSION
OIL & GAS CONSERVATION DIVISION

TEMPORARY ABANDONMENT WELL APPLICATION

OPERATOR: License#
Name:
Address 1:
Address 2:
City: State: Zip:
Contact Person:
Phone:
Contact Person Email:
Field Contact Person:
Field Contact Person Phone:

API No. 15-
Spot Description:
Sec. Twp. S. R.
GPS Location: Lat, Long
Datum: NAD27, NAD83, WGS84
County: Elevation:
Lease Name: Well #:
Well Type: Oil, Gas, OG, WSW, Other
SWD Permit #: ENHR Permit #:
Gas Storage Permit #:
Spud Date: Date Shut-In:

Table with 7 columns: Conductor, Surface, Production, Intermediate, Liner, Tubing. Rows include Size, Setting Depth, Amount of Cement, Top of Cement, Bottom of Cement.

Casing Fluid Level from Surface: How Determined? Date:
Casing Squeeze(s): to w / sacks of cement, to w / sacks of cement. Date:
Do you have a valid Oil & Gas Lease? Yes No
Depth and Type: Junk in Hole at Tools in Hole at Casing Leaks: Yes No Depth of casing leak(s):
Type Completion: ALT. I ALT. II Depth of: DV Tool: w / sacks of cement Port Collar: w / sack of cement
Packer Type: Size: Inch Set at: Feet
Total Depth: Plug Back Depth: Plug Back Method:

Geological Data:

Table with 4 columns: Formation Name, Formation Top, Formation Base, Completion Information. Rows 1 and 2.

UNDER PENALTY OF PERJURY I HEREBY ATTEST THAT THE INFORMATION CONTAINED HEREIN IS TRUE AND CORRECT TO THE BEST OF MY KNOWLEDGE

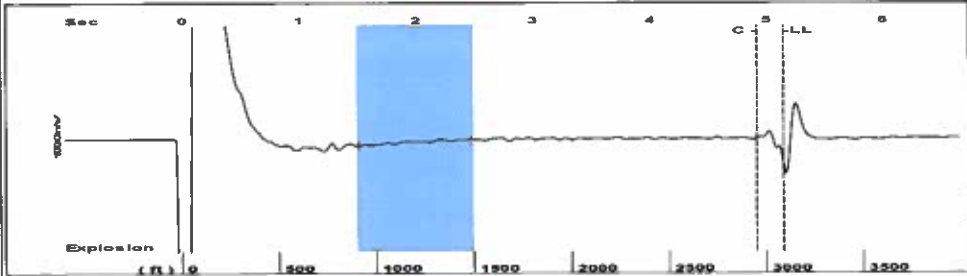
Submitted Electronically

Do NOT Write in This Space - KCC USE ONLY
Date Tested: Results: Date Plugged: Date Repaired: Date Put Back in Service:
Review Completed by: Comments:
TA Approved: Yes Denied Date:

Mail to the Appropriate KCC Conservation Office:

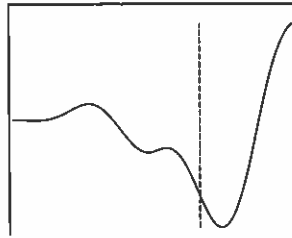
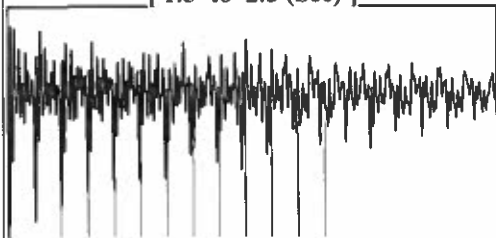
Table with 3 columns: District Office #, Address, Phone. Rows 1-4.

Group: TA'D WELLS Well: HAYWARD 1-16 (acquired on: 11/13/20 11:29:43)



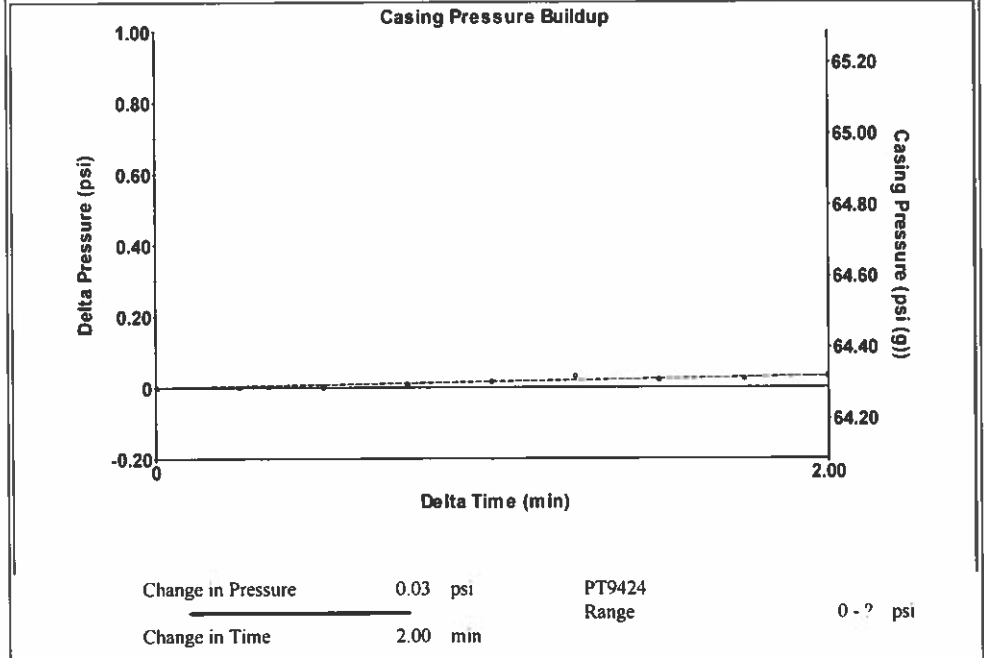
Filter Type High Pass Automatic Collar Count Yes Time 5.147 sec
 Manual Acoustic Velocity 1169.74 ft/s Manual JTS/sec 18.4502 Joints 97.3637 Jts
 Depth 3086.43 ft

[1.5 to 2.5 (Sec)]



Analysis Method: Automatic

Group: TA'D WELLS Well: HAYWARD 1-16 (acquired on: 11/13/20 11:29:43)



Change in Pressure 0.03 psi PT9424 Range 0 - ? psi
 Change in Time 2.00 min

Group: TA'D WELLS Well: HAYWARD 1-16 (acquired on: 11/13/20 11:29:43)

Production	Potential	Casing Pressure
Current		64.3 psi (g)
Oil - * -	- * - BBL/D	Casing Pressure Buildup
Water - * -	- * - BBL/D	0.032 psi
Gas - * -	- * - Mscf/D	2.00 min
		Gas/Liquid Interface Pressure
		71.1 psi (g)
IPR Method	Vogel	Liquid Level Depth
PBHP/SBHP	- * -	3086.43 ft
Production Efficiency	0.0	Pump Intake Depth
		3280.00 ft
Oil 40 deg API		Formation Depth
Water 1.05 Sp.Gr H2O		3280.00 ft
Gas 0.79 Sp.Gr AIR		
Acoustic Velocity	1199.31 ft/s	



Producing

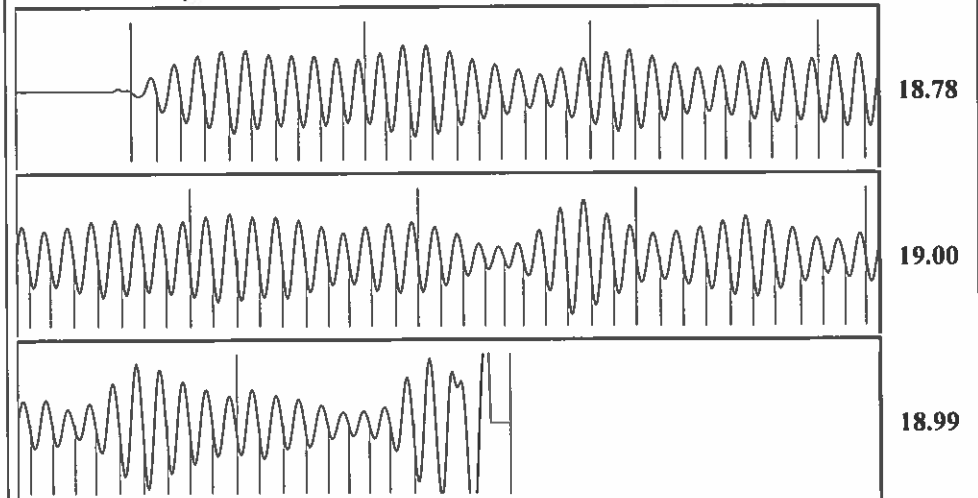
Annular Gas Flow 0 Mscf/D
 % Liquid 100 %

Pump Intake
 136.6 psi (g)
Producing BHP
 136.6 psi (g)
Static BHP
 - * - psi (g)

Formation Submergence
 Total Gaseous Liquid Column HT (TVD) 194 ft
 Equivalent Gas Free Liquid HT (TVD) 194 ft

Acoustic Test

Group: TA'D WELLS Well: HAYWARD 1-16 (acquired on: 11/13/20 11:29:43)



Acoustic Velocity	1199.31 ft/s	Joints counted	88
Joints Per Second	18.9166 jts/sec	Joints to liquid level	97.3637
Depth to liquid level	3086.43 ft	Filter Width	16.4502 20.4502
Automatic Collar Count	Yes	Time to 1st Collar	0.268 4.92

Susan K. Duffy, Chair
Dwight D. Keen, Commissioner
Andrew J. French, Commissioner

Laura Kelly, Governor

December 01, 2020

Katherine McClurkan
Merit Energy Company, LLC
13727 Noel Road, Suite 1200
Dallas, TX 75240-7362

Re: Temporary Abandonment
API 15-129-10047-00-00
Hayward 1-16
NW/4 Sec.16-32S-42W
Morton County, Kansas

Dear Katherine McClurkan :

"Your temporary abandonment (TA) application for the well listed above has been approved. In accordance with K.A.R. 82-3-111 the TA status of this well will expire 12/01/2021.

- * If you return this well to service or plug it, please notify the District Office.
- * If you sell this well you are required to file a Transfer of Operator form, T-1.
- * If the well will remain temporarily abandoned, you must submit a new TA application, CP-111, before 12/01/2021.

You may contact me at the number above if you have questions.

Very truly yours,

Michael Maier"