

KANSAS CORPORATION COMMISSION
OIL & GAS CONSERVATION DIVISION

TEMPORARY ABANDONMENT WELL APPLICATION

OPERATOR: License#
Name:
Address 1:
Address 2:
City: State: Zip:
Contact Person:
Phone:
Contact Person Email:
Field Contact Person:
Field Contact Person Phone:

API No. 15-
Spot Description:
Sec. Twp. S. R.
GPS Location: Lat: Long:
Datum: NAD27 NAD83 WGS84
County: Elevation:
Lease Name: Well #:
Well Type: Oil Gas OG WSW Other:
SWD Permit #: ENHR Permit #:
Gas Storage Permit #:
Spud Date: Date Shut-In:

Table with 7 columns: Conductor, Surface, Production, Intermediate, Liner, Tubing. Rows include Size, Setting Depth, Amount of Cement, Top of Cement, Bottom of Cement.

Casing Fluid Level from Surface: How Determined? Date:
Casing Squeeze(s): to w / sacks of cement, to w / sacks of cement. Date:
Do you have a valid Oil & Gas Lease? Yes No
Depth and Type: Junk in Hole at Tools in Hole at Casing Leaks: Yes No Depth of casing leak(s):
Type Completion: ALT. I ALT. II Depth of: DV Tool: w / sacks of cement Port Collar: w / sack of cement
Packer Type: Size: Inch Set at: Feet
Total Depth: Plug Back Depth: Plug Back Method:

Geological Data:

Table with 4 columns: Formation Name, Formation Top, Formation Base, Completion Information. Rows 1 and 2.

UNDER PENALTY OF PERJURY I HEREBY ATTEST THAT THE INFORMATION CONTAINED HEREIN IS TRUE AND CORRECT TO THE BEST OF MY KNOWLEDGE

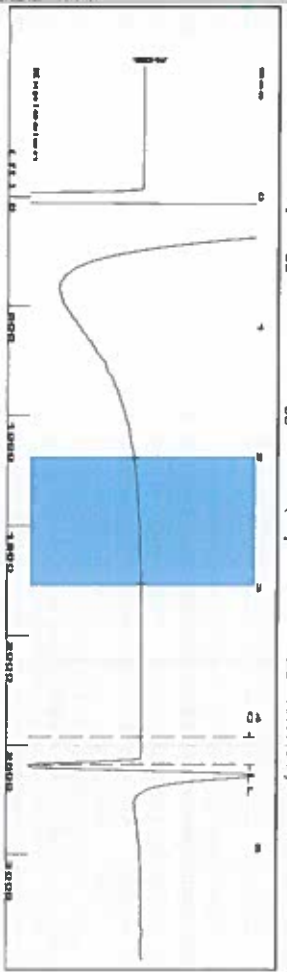
Submitted Electronically

Do NOT Write in This Space - KCC USE ONLY
Date Tested: Results: Date Plugged: Date Repaired: Date Put Back in Service:
Review Completed by: Comments:
TA Approved: Yes Denied Date:

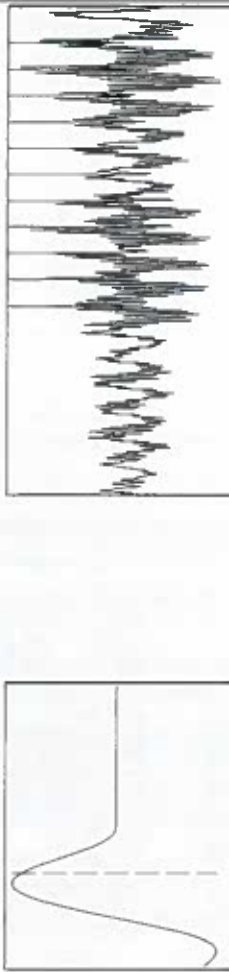
Mail to the Appropriate KCC Conservation Office:

Table with 3 columns: District Office, Address, Phone. Rows for District Office #1, #2, #3, #4.

Group: Wiggins Well: Wiggins 12-8 (acquired on: 12/01/20 10:17:04)



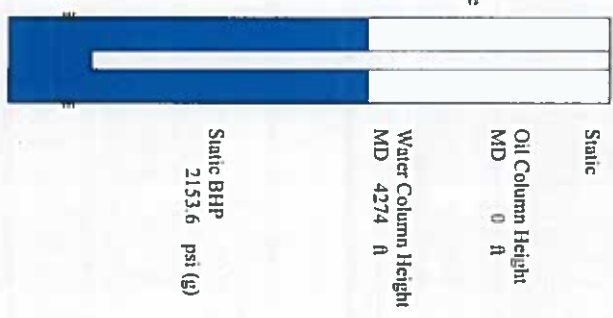
Filter Type High Pass Automatic Collar Count Yes
 Manual Acoustic Velocity 169.74 ft/s Manual JTS/sec 18.4502
 Time 4.359 sec
 Joints 81.6753
 Depth 2589.11 ft



Analysis Method: Automatic

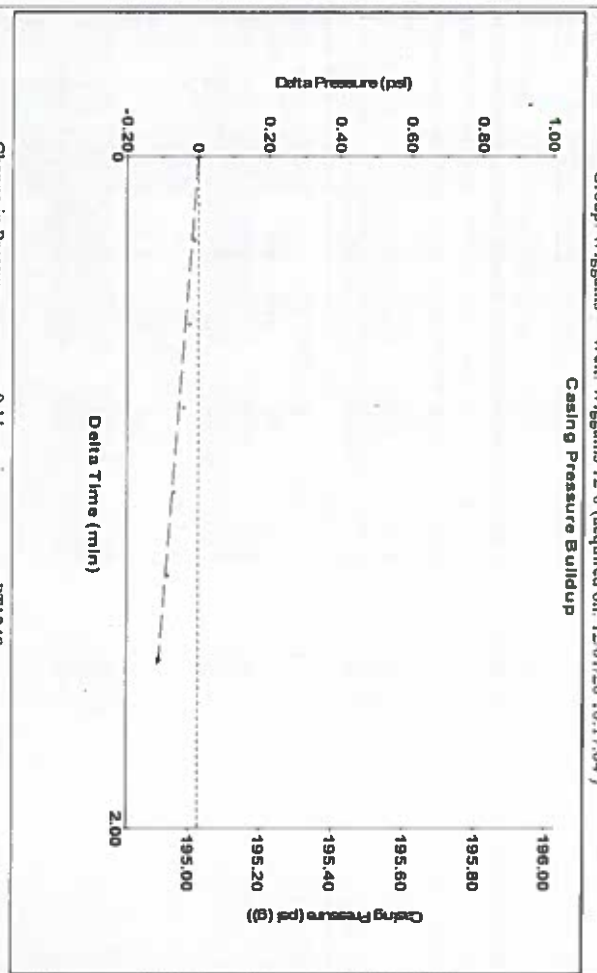
Group: Wiggins Well: Wiggins 12-8 (acquired on: 12/01/20 10:17:04)

Production Current	Potential	Casing Pressure	Static
Oil --*--	--*-- BBL/D	195.0 psi (g)	Oil Column Height
Water --*--	--*-- BBL/D	-0.110 psi	MD 0 ft
Gas --*--	--*-- Mscf/D	1.50 min	
IPR Method	Vogel	Gas/Liquid Interface Pressure	
PBHP/SBHP	--*--	210.5 psi (g)	
Production Efficiency	0.0		
Oil 40 deg API		Liquid Level Depth	Water Column Height
Water 1.05 Sp.Gr.H2O		2589.11 ft	MD 4274 ft
Gas 0.76 Sp.Gr.AIR		Pump Intake Depth	
Acoustic Velocity	1187.94 ft/s	6544.00 ft	
		Formation Depth	
		6863.00 ft	



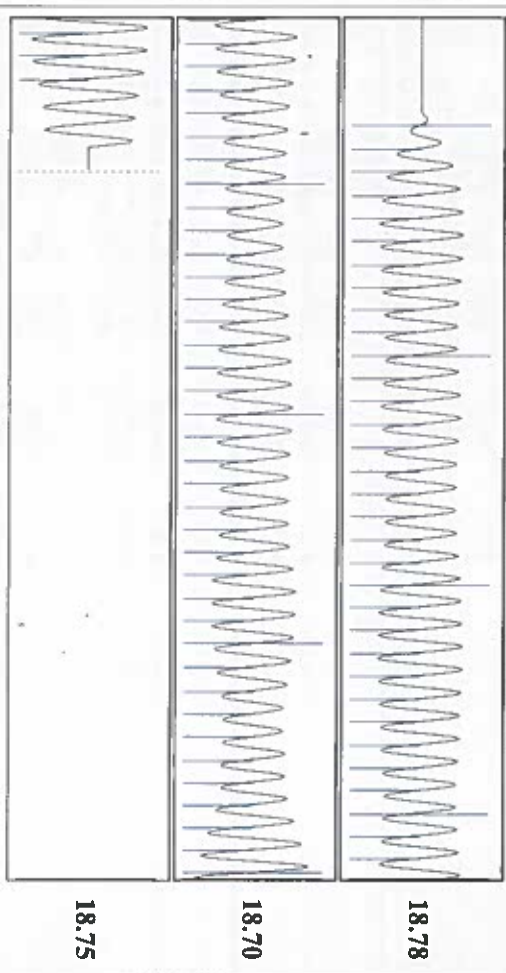
Group: Wiggins Well: Wiggins 12-8 (acquired on: 12/01/20 10:17:04)

Shot @ 300 psi BP



Change in Pressure -0.11 psi
 Change in Time 1.50 min
 PT1249 Range 0 - ? psi

Group: Wiggins Well: Wiggins 12-8 (acquired on: 12/01/20 10:17:04)



Acoustic Velocity	1187.94 ft/s	Joints counted	73
Joints Per Second	18.7372	Joints to liquid level	81.6753
Depth to liquid level	2589.11 ft	Filter Width	16.4502
Automatic Collar Count	Yes	Time to 1st Collar	0.248

18.78
 18.70
 18.75

December 01, 2020

Katherine McClurkan
Merit Energy Company, LLC
13727 Noel Road, Suite 1200
DALLAS, TX 75240-7362

Re: Temporary Abandonment
API 15-189-22775-00-00
Wiggians 12-8
NE/4 Sec.12-35S-36W
Stevens County, Kansas

Dear Katherine McClurkan :

"Your temporary abandonment (TA) application for the well listed above has been approved. In accordance with K.A.R. 82-3-111 the TA status of this well will expire 12/01/2021.

- * If you return this well to service or plug it, please notify the District Office.
- * If you sell this well you are required to file a Transfer of Operator form, T-1.
- * If the well will remain temporarily abandoned, you must submit a new TA application, CP-111, before 12/01/2021.

You may contact me at the number above if you have questions.

Very truly yours,

Michael Maier"