

KANSAS CORPORATION COMMISSION
OIL & GAS CONSERVATION DIVISION

Form must be Typed
Form must be signed

TEMPORARY ABANDONMENT WELL APPLICATION

All blanks must be complete

OPERATOR: License#
Name:
Address 1:
Address 2:
City: State: Zip:
Contact Person:
Phone:
Contact Person Email:
Field Contact Person:
Field Contact Person Phone:

API No. 15-
Spot Description:
Sec. Twp. S. R.
GPS Location: Lat: Long:
Datum: NAD27 NAD83 WGS84
County: Elevation:
Lease Name: Well #:
Well Type: Oil Gas OG WSW Other:
SWD Permit #: ENHR Permit #:
Gas Storage Permit #:
Spud Date: Date Shut-In:

Table with 7 columns: Conductor, Surface, Production, Intermediate, Liner, Tubing. Rows include Size, Setting Depth, Amount of Cement, Top of Cement, Bottom of Cement.

Casing Fluid Level from Surface: How Determined? Date:
Casing Squeeze(s): to w / sacks of cement, to w / sacks of cement. Date:
Do you have a valid Oil & Gas Lease? Yes No
Depth and Type: Junk in Hole at Tools in Hole at Casing Leaks: Yes No Depth of casing leak(s):
Type Completion: ALT. I ALT. II Depth of: DV Tool: w / sacks of cement Port Collar: w / sack of cement
Packer Type: Size: Inch Set at: Feet
Total Depth: Plug Back Depth: Plug Back Method:

Geological Date:

Table with 4 columns: Formation Name, Formation Top, Formation Base, Completion Information. Rows 1 and 2.

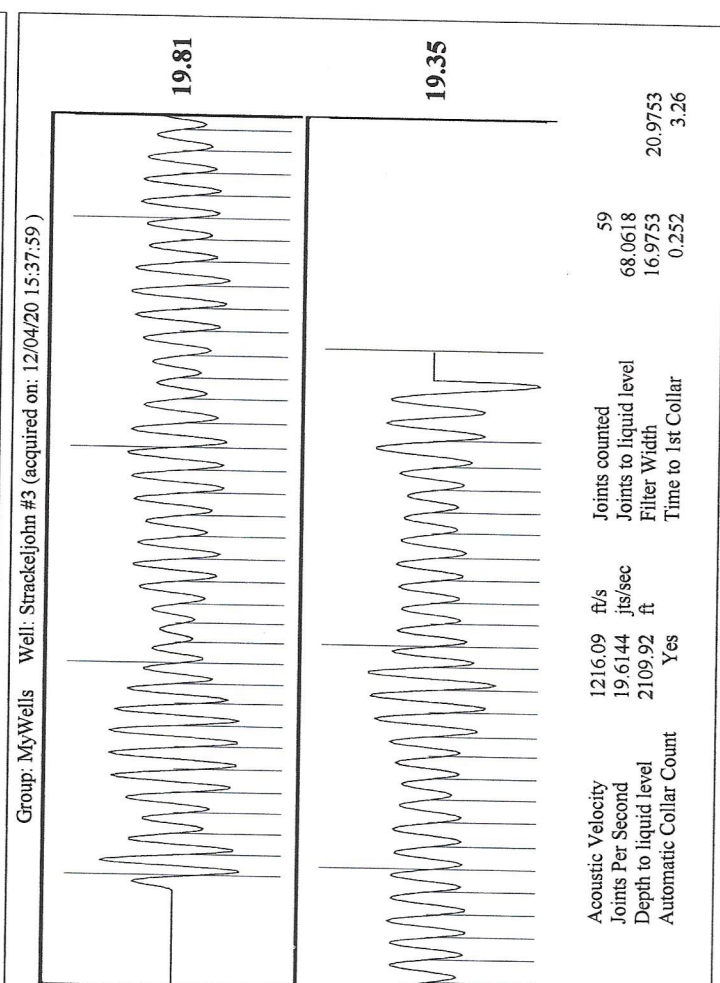
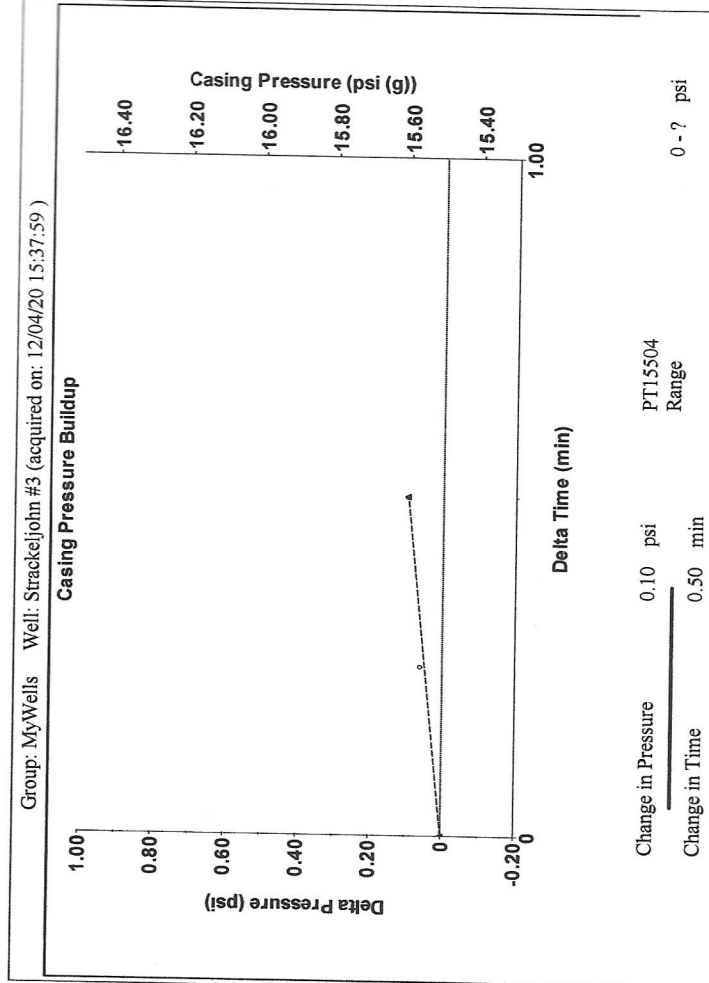
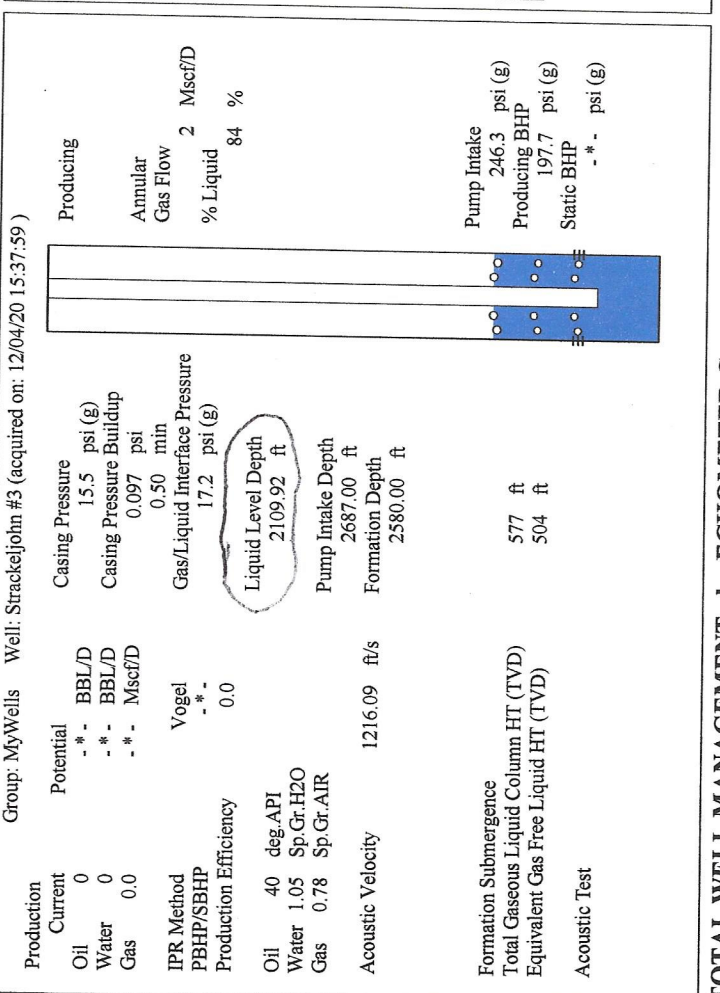
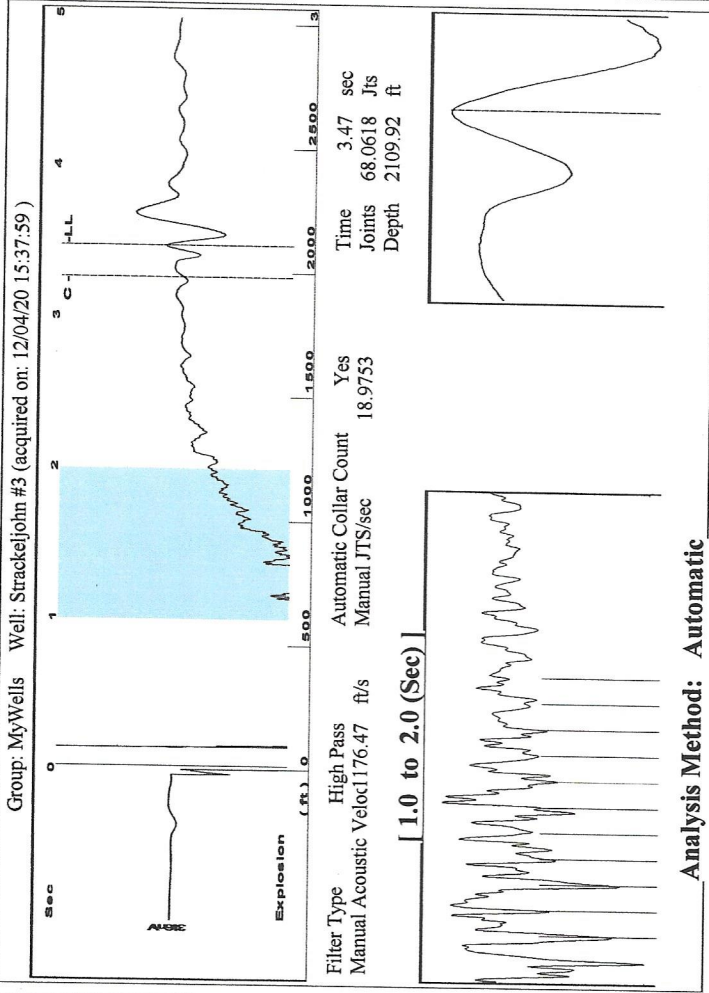
UNDER PENALTY OF PERJURY I HEREBY ATTEST THAT THE INFORMATION CONTAINED HEREIN IS TRUE AND CORRECT TO THE BEST OF MY KNOWLEDGE

Submitted Electronically

Do NOT Write in This Space - KCC USE ONLY
Date Tested: Results: Date Plugged: Date Repaired: Date Put Back in Service:
Review Completed by: Comments:
TA Approved: Yes Denied Date:

Mail to the Appropriate KCC Conservation Office:

Table with 2 columns: Office Address, Phone. Rows for KCC District Office #1, #2, #3, #4.



Group: MyWells Well: Strackeljohn #3 (acquired on: 12/04/20 15:37:59)

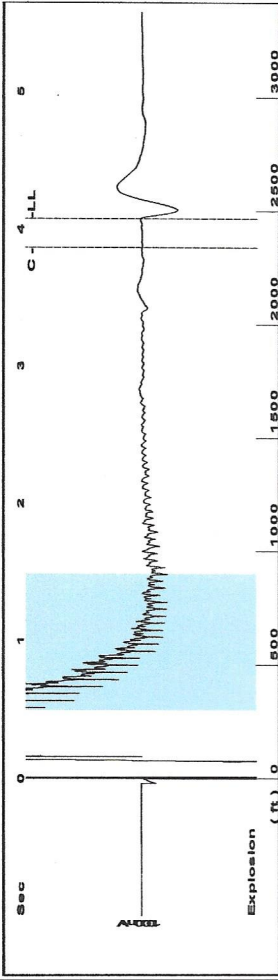
Production	Potential	Casing Pressure	15.5 psi (g)
Current	- * - BBL/D	Casing Pressure Buildup	0.097 psi
Oil	- * - BBL/D	Gas/Liquid Interface Pressure	0.50 min
Water	- * - BBL/D	Liquid Level Depth	2109.92 ft
Gas	- * - Mscf/D	Pump Intake Depth	2687.00 ft
IPR Method	Vogel	Formation Depth	2580.00 ft
PBHP/SBHP	- * -		
Production Efficiency	0.0		
Oil	40 deg.API		
Water	1.05 Sp.Gr.H2O		
Gas	0.78 Sp.Gr.AIR		
Acoustic Velocity	1216.09 ft/s		
Formation Submergence			
Total Gaseous Liquid Column HI (TVD)	577 ft		
Equivalent Gas Free Liquid HI (TVD)	504 ft		
Acoustic Test			

Producing

Annular Gas Flow	2 Mscf/D
% Liquid	84 %

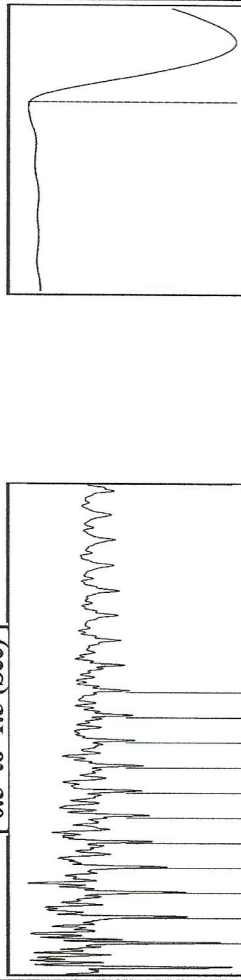
Pump Intake 246.3 psi (g)
 Producing BHP 197.7 psi (g)
 Static BHP - * - psi (g)

Group: MyWells Well: Strackejohn #3 (acquired on: 12/18/19 12:42:00)



Filter Type High Pass Automatic Collar Count Yes
 Manual Acoustic Veloc 1210.94 ft/s Manual JTS/sec 19.5312
 Time 4.077 sec
 Joints 79.5401 Jts
 Depth 2465.74 ft

[0.5 to 1.5 (Sec)]

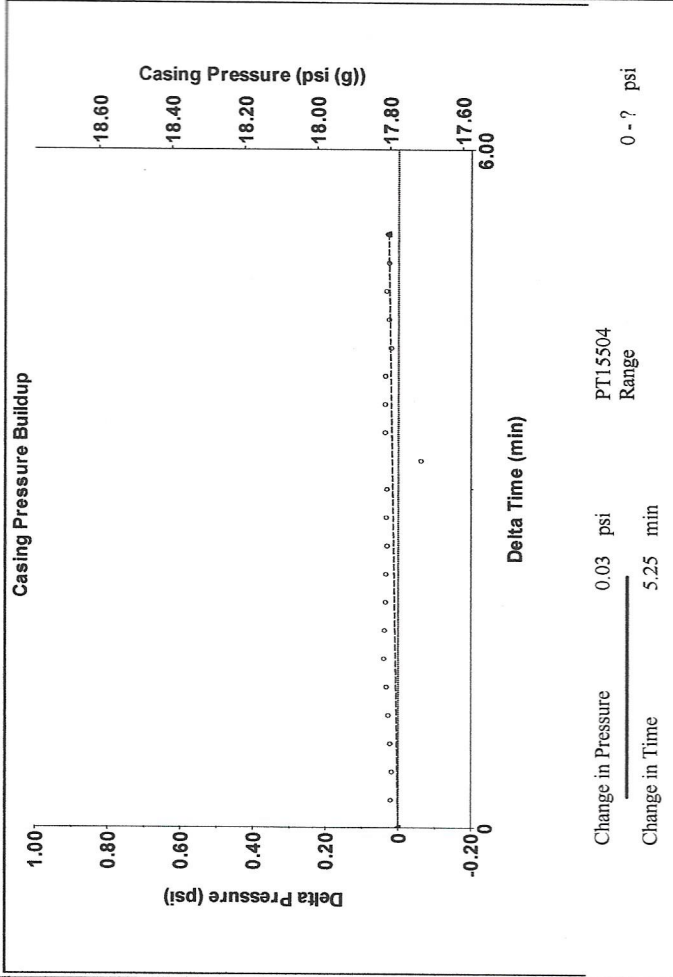


Analysis Method: Automatic

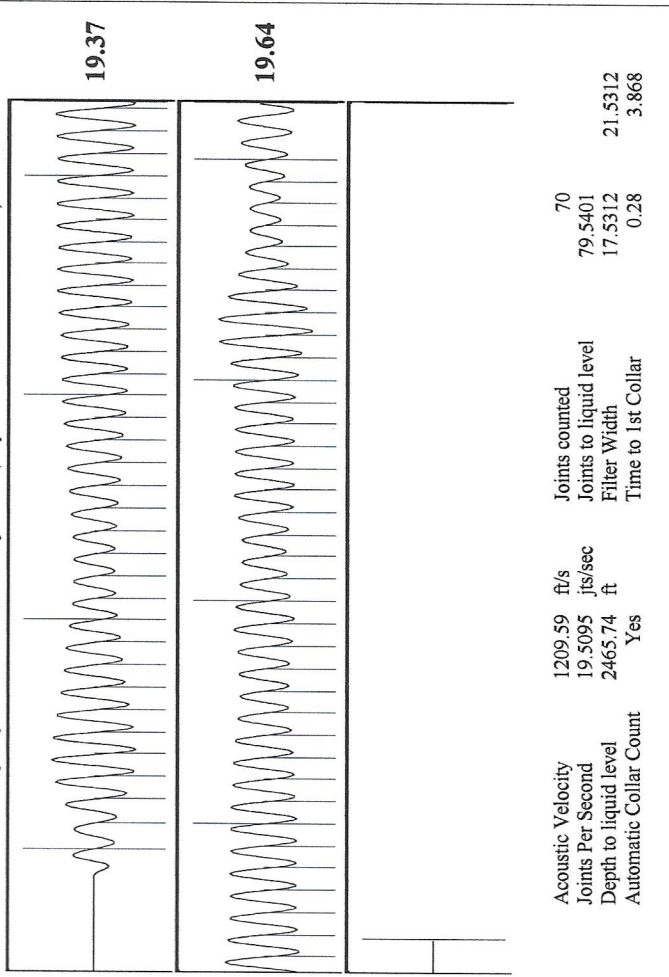
Group: MyWells Well: Strackejohn #3 (acquired on: 12/18/19 12:42:00)

Production Current	Oil 0	Potential	Casing Pressure 17.8 psi (g)	Producing	Annular Gas Flow 0 Mscf/D
Water 0	Gas 0.0	Vogel	Casing Pressure Buildup 0.027 psi	% Liquid	100 %
IPR Method PBHP/SBHP	Production Efficiency	0.0	Gas/Liquid Interface Pressure 20.0 psi (g)	Pump Intake	120.5 psi (g)
Oil 40 deg API	Water 1.05 Sp.Gr.H2O	0.0	Liquid Level Depth 2465.74 ft	Producing BHP	71.9 psi (g)
Gas 0.79 Sp.Gr.AIR	Acoustic Velocity 1209.59 ft/s	1209.59 ft/s	Pump Intake Depth 2687.00 ft	Static BHP	- * - psi (g)
Formation Submergence	Total Gaseous Liquid Column HT (TVD)	221 ft	Formation Depth 2580.00 ft		
Equivalent Gas Free Liquid HT (TVD)		221 ft			
Acoustic Test					

Group: MyWells Well: Strackejohn #3 (acquired on: 12/18/19 12:42:00)



Group: MyWells Well: Strackejohn #3 (acquired on: 12/18/19 12:42:00)



December 08, 2020

Catherine H Stucky
Hartman Oil Co., Inc.
10500 E BERKELEY SQ PKWY STE 100
WICHITA, KS 67206-6816

Re: Temporary Abandonment
API 15-055-21345-00-00
STRACKEL JOHN 3 3A
SW/4 Sec.03-22S-34W
Finney County, Kansas

Dear Catherine H Stucky:

"Your temporary abandonment (TA) application for the well listed above has been approved. In accordance with K.A.R. 82-3-111 the TA status of this well will expire 12/08/2021.

- * If you return this well to service or plug it, please notify the District Office.
- * If you sell this well you are required to file a Transfer of Operator form, T-1.
- * If the well will remain temporarily abandoned, you must submit a new TA application, CP-111, before 12/08/2021.

You may contact me at the number above if you have questions.

Very truly yours,

Michael Maier"