

KANSAS CORPORATION COMMISSION
OIL & GAS CONSERVATION DIVISION

TEMPORARY ABANDONMENT WELL APPLICATION

OPERATOR: License#
Name:
Address 1:
Address 2:
City: State: Zip:
Contact Person:
Phone:
Contact Person Email:
Field Contact Person:
Field Contact Person Phone:

API No. 15-
Spot Description:
Sec. Twp. S. R.
GPS Location: Lat: Long:
Datum: NAD27 NAD83 WGS84
County: Elevation:
Lease Name: Well #:
Well Type: Oil Gas OG WSW Other:
SWD Permit #: ENHR Permit #:
Gas Storage Permit #:
Spud Date: Date Shut-In:

Table with 7 columns: Conductor, Surface, Production, Intermediate, Liner, Tubing. Rows include Size, Setting Depth, Amount of Cement, Top of Cement, Bottom of Cement.

Casing Fluid Level from Surface: How Determined? Date:
Casing Squeeze(s): to w / sacks of cement, to w / sacks of cement. Date:
Do you have a valid Oil & Gas Lease? Yes No
Depth and Type: Junk in Hole at Tools in Hole at Casing Leaks: Yes No Depth of casing leak(s):
Type Completion: ALT. I ALT. II Depth of: DV Tool: w / sacks of cement Port Collar: w / sack of cement
Packer Type: Size: Inch Set at: Feet
Total Depth: Plug Back Depth: Plug Back Method:

Geological Data:

Table with 4 columns: Formation Name, Formation Top, Formation Base, Completion Information. Rows 1 and 2.

UNDER PENALTY OF PERJURY I HEREBY ATTEST THAT THE INFORMATION CONTAINED HEREIN IS TRUE AND CORRECT TO THE BEST OF MY KNOWLEDGE

Submitted Electronically

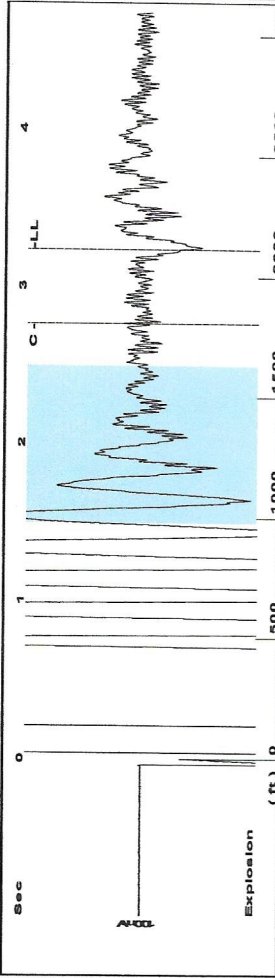
Do NOT Write in This Space - KCC USE ONLY
Date Tested: Results: Date Plugged: Date Repaired: Date Put Back in Service:
Review Completed by: Comments:
TA Approved: Yes Denied Date:

Mail to the Appropriate KCC Conservation Office:

Table with 2 columns: Office Address, Phone. Rows for District Office #1, #2, #3, #4.

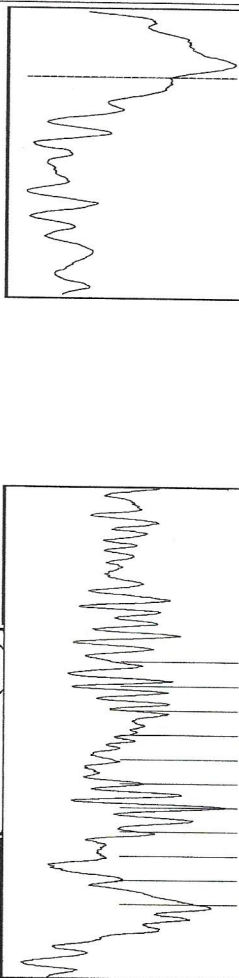


Group: MyWells Well: Damme A #1 TA (acquired on: 12/04/20 11:46:31)



Filter Type High Pass Automatic Collar Count Yes Time 3.23 sec
 Manual Acoustic Veloc 272.73 ft/s Manual JTS/sec 20.202 Joints 67.0767 Jts
 Depth 2112.92 ft

[1.5 to 2.5 (Sec)]

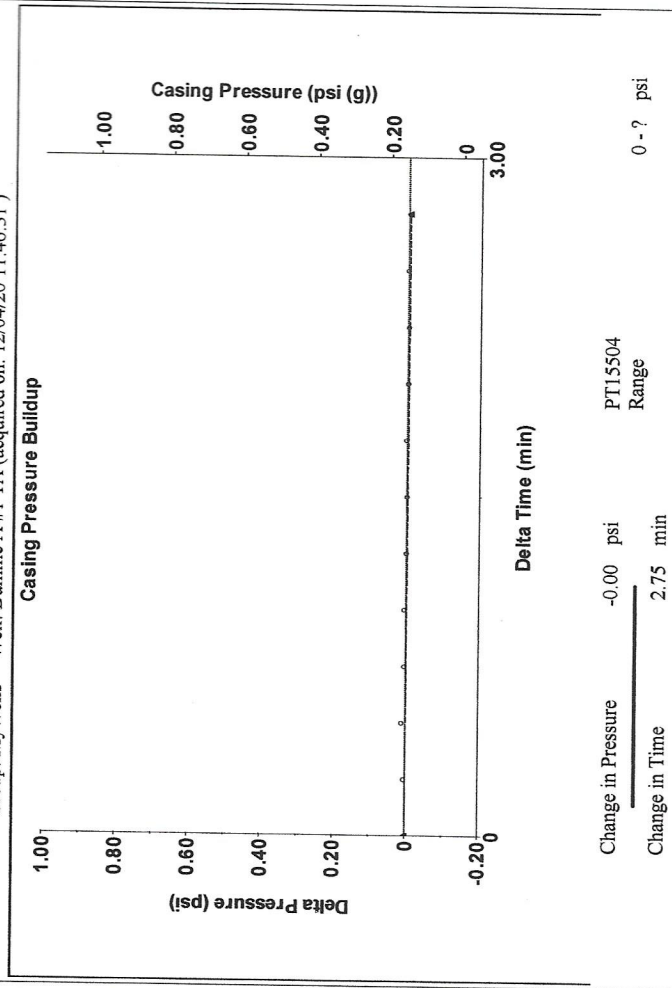


Analysis Method: Automatic

Group: MyWells Well: Damme A #1 TA (acquired on: 12/04/20 11:46:31)

Production	Potential	Casing Pressure	Producing
Oil 0	- * - BBL/D	0.2 psi (g)	Annular
Water 0	- * - BBL/D	Casing Pressure Buildup	Gas Flow 0 Mscf/D
Gas 0.0	- * - Mscf/D	-0.004 psi	% Liquid 100 %
IPR Method Vogel	Gas/Liquid Interface Pressure	2.75 min	
PBHP/SBHP - * -	0.9 psi (g)		
Production Efficiency 0.0			
Oil 39 deg API	Liquid Level Depth		
Water 1.05 Sp.Gr.H2O	2112.92 ft		
Gas 0.69 Sp.Gr.AIR	Pump Intake Depth		
	4786.00 ft		
Acoustic Velocity 1308.31 ft/s	Formation Depth		
	4064.00 ft		
Formation Submergence			
Total Gaseous Liquid Column HT (TVD)	2673 ft		
Equivalent Gas Free Liquid HT (TVD)	2673 ft		
Acoustic Test			

Group: MyWells Well: Damme A #1 TA (acquired on: 12/04/20 11:46:31)

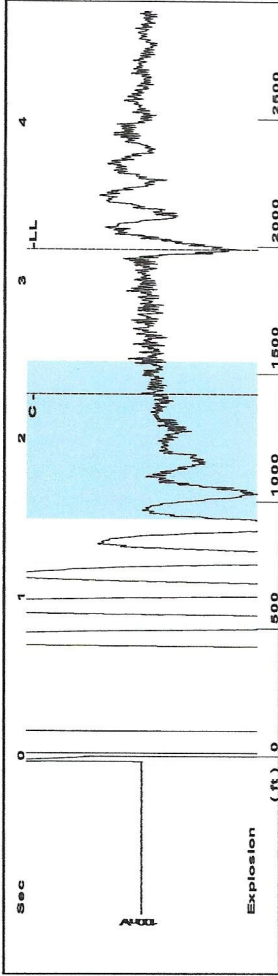


Change in Pressure -0.00 psi PT15504 Range
 Change in Time 2.75 min

Group: MyWells Well: Damme A #1 TA (acquired on: 12/04/20 11:46:31)

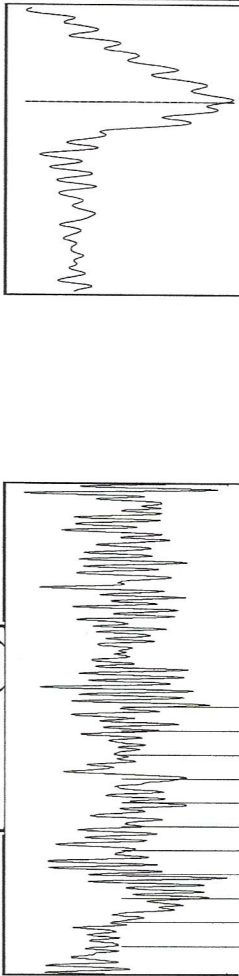
Acoustic Velocity 1308.31 ft/s	Joints counted 52
Joints Per Second 20.7668 jts/sec	Joints to liquid level 67.0767
Depth to liquid level 2112.92 ft	Filter Width 18.202
Automatic Collar Count Yes	Time to 1st Collar 2.764

Group: MyWells Well: Damme A #1 TA (acquired on: 03/10/20 15:41:20)



Filter Type High Pass
 Manual Acoustic Veloc 288.34 ft/s
 Automatic Collar Count Yes
 Manual JTS/sec 20.4499
 Time 3.2 sec
 Joints 63.1164 Jts
 Depth 1988.17 ft

[1.5 to 2.5 (Sec)]



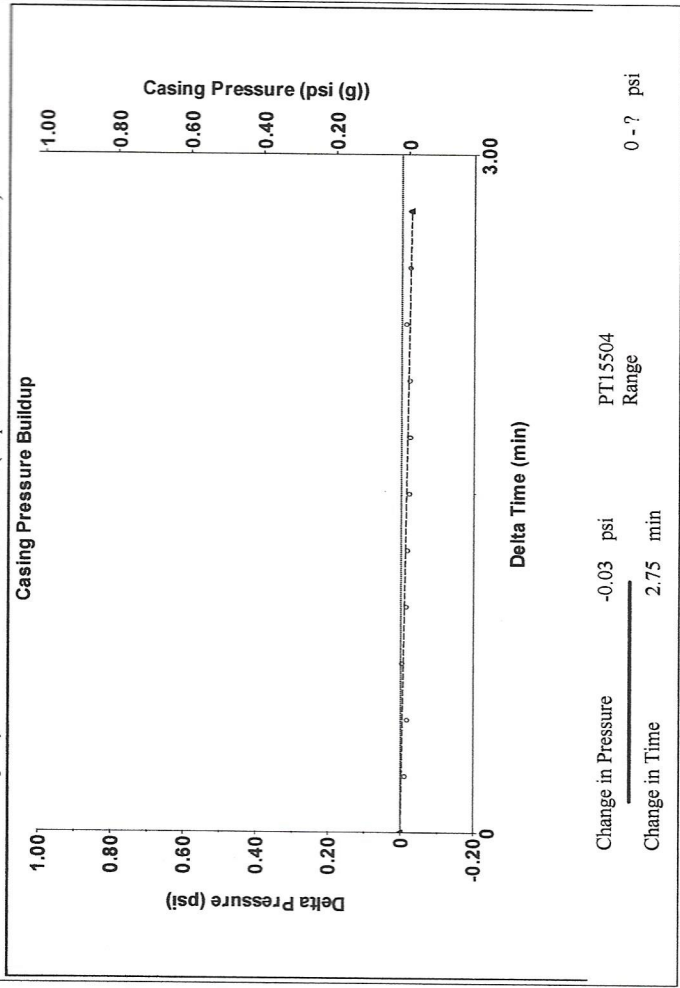
Analysis Method: Automatic

Group: MyWells Well: Damme A #1 TA (acquired on: 03/10/20 15:41:20)

Production	Potential	Casing Pressure	0.0 psi (g)
Oil 0	- * - BBL/D	Casing Pressure Buildup	-0.027 psi
Water 0	- * - BBL/D	Gas/Liquid Interface Pressure	2.75 min
Gas 0.0	- * - Mscf/D	Liquid Level Depth	1988.17 ft
IPR Method	Vogel	Pump Intake Depth	4786.00 ft
PBHP/SBHP	- * -	Formation Depth	4064.00 ft
Production Efficiency	0.0	Acoustic Velocity	1242.6 ft/s
Oil 39 deg API		Formation Submergence	2798 ft
Water 1.05 Sp.Gr.H2O		Total Gaseous Liquid Column HT (TVD)	2798 ft
Gas 0.75 Sp.Gr.AIR		Equivalent Gas Free Liquid HT (TVD)	
Acoustic Velocity	1242.6 ft/s	Acoustic Test	

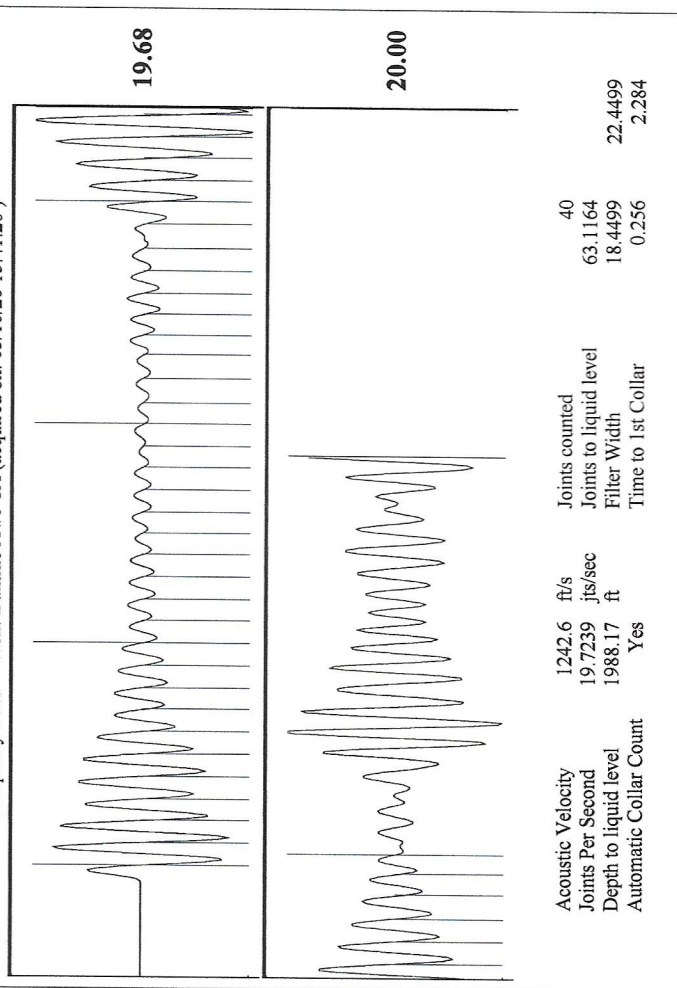
Producing	Annular Gas Flow	0 Mscf/D
	% Liquid	100 %
	Pump Intake	1272.8 psi (g)
	Producing BHP	944.6 psi (g)
	Static BHP	- * - psi (g)

Group: MyWells Well: Damme A #1 TA (acquired on: 03/10/20 15:41:20)



Change in Pressure -0.03 psi
 Change in Time 2.75 min
 PT15504 Range

Group: MyWells Well: Damme A #1 TA (acquired on: 03/10/20 15:41:20)



Acoustic Velocity 1242.6 ft/s
 Joints Per Second 19.7239 jts/sec
 Depth to liquid level 1988.17 ft
 Automatic Collar Count Yes
 Joints counted 40
 Joints to liquid level 63.1164
 Filter Width 18.4499
 Time to 1st Collar 0.256

December 08, 2020

Catherine H Stucky
Hartman Oil Co., Inc.
10500 E BERKELEY SQ PKWY STE 100
WICHITA, KS 67206-6816

Re: Temporary Abandonment
API 15-055-10097-00-00
DAMME A 1
SW/4 Sec.33-22S-33W
Finney County, Kansas

Dear Catherine H Stucky:

"Your temporary abandonment (TA) application for the well listed above has been approved. In accordance with K.A.R. 82-3-111 the TA status of this well will expire 12/08/2021.

- * If you return this well to service or plug it, please notify the District Office.
- * If you sell this well you are required to file a Transfer of Operator form, T-1.
- * If the well will remain temporarily abandoned, you must submit a new TA application, CP-111, before 12/08/2021.

You may contact me at the number above if you have questions.

Very truly yours,

Michael Maier"