

KANSAS CORPORATION COMMISSION
OIL & GAS CONSERVATION DIVISION

TEMPORARY ABANDONMENT WELL APPLICATION

OPERATOR: License#
Name:
Address 1:
Address 2:
City: State: Zip:
Contact Person:
Phone:
Contact Person Email:
Field Contact Person:
Field Contact Person Phone:

API No. 15-
Spot Description:
Sec. Twp. S. R.
feet from N / S Line of Section
feet from E / W Line of Section
GPS Location: Lat: , Long:
Datum: NAD27 NAD83 WGS84
County: Elevation: GL KB
Lease Name: Well #:
Well Type: Oil Gas OG WSW Other:
SWD Permit #: ENHR Permit #:
Gas Storage Permit #:
Spud Date: Date Shut-In:

Table with 7 columns: Conductor, Surface, Production, Intermediate, Liner, Tubing. Rows include Size, Setting Depth, Amount of Cement, Top of Cement, Bottom of Cement.

Casing Fluid Level from Surface: How Determined? Date:
Casing Squeeze(s): to w / sacks of cement, to w / sacks of cement. Date:
Do you have a valid Oil & Gas Lease? Yes No
Depth and Type: Junk in Hole at Tools in Hole at Casing Leaks: Yes No Depth of casing leak(s):
Type Completion: ALT. I ALT. II Depth of: DV Tool: w / sacks of cement Port Collar: w / sack of cement
Packer Type: Size: Inch Set at: Feet
Total Depth: Plug Back Depth: Plug Back Method:

Geological Data:

Table with 4 columns: Formation Name, Formation Top, Formation Base, Completion Information. Rows 1 and 2.

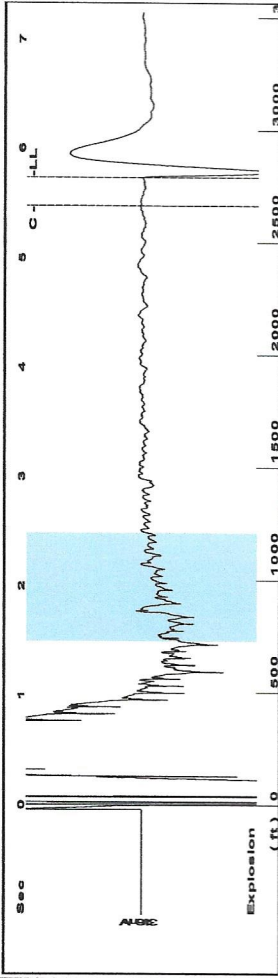
UNDER PENALTY OF PERJURY I HEREBY ATTEST THAT THE INFORMATION CONTAINED HEREIN IS TRUE AND CORRECT TO THE BEST OF MY KNOWLEDGE

Submitted Electronically

Do NOT Write in This Space - KCC USE ONLY
Date Tested: Results: Date Plugged: Date Repaired: Date Put Back in Service:
Review Completed by: Comments:
TA Approved: Yes Denied Date:

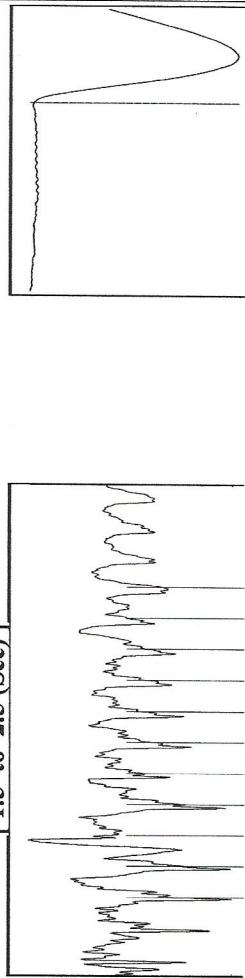
Mail to the Appropriate KCC Conservation Office:

Table with 3 columns: District Office #, Address, Phone. Rows 1-4.



Filter Type High Pass Automatic Collar Count Yes Time 5.737 sec
 Manual Acoustic Veloc 979.463 ft/s Manual JTS/sec 15.7978 Joints 89.9878 Jts
 Depth 2789.62 ft

[1.5 to 2.5 (Sec)]



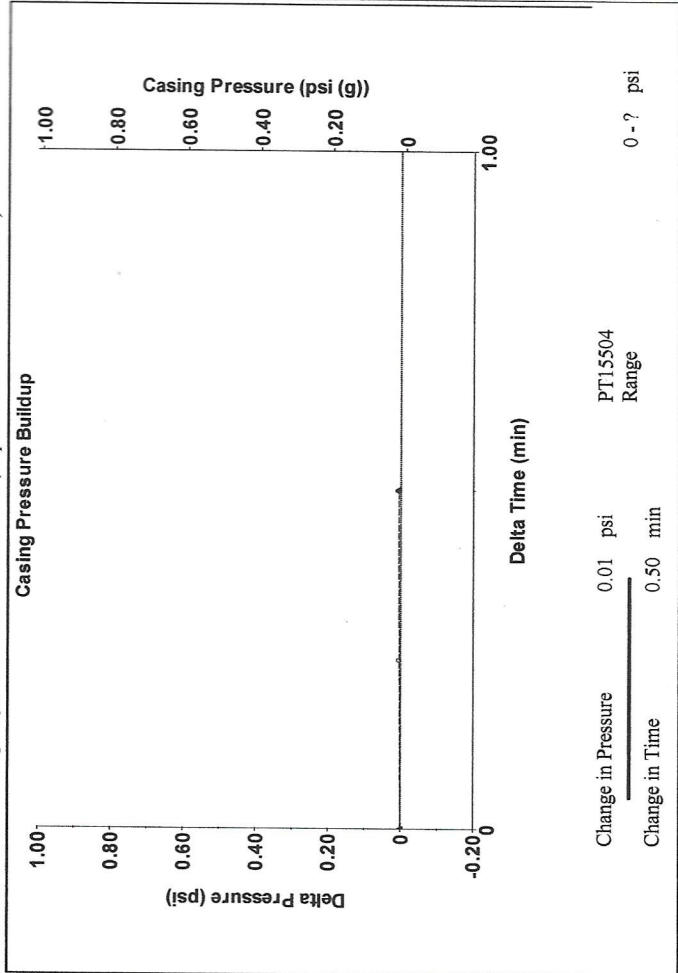
Analysis Method: Automatic

Production	Potential	Casing Pressure	0.0 psi (g)
Current	- * - BBL/D	Casing Pressure Buildup	0.006 psi
Oil	- * - BBL/D	Gas/Liquid Interface Pressure	0.50 min
Water	- * - Mscf/D		1.5 psi (g)
Gas			
IPR Method	Vogel		
PBHP/SBHP	- * -		
Production Efficiency	0.0		
Oil	39 deg.API		
Water	1.05 Sp.Gr.H2O		
Gas	1.00 Sp.Gr.AIR		
Acoustic Velocity	972.502 ft/s		
Formation Submergence			
Total Gaseous Liquid Column HT (TVD)	2070 ft		
Equivalent Gas Free Liquid HT (TVD)	2070 ft		
Acoustic Test			

Producing	Annular Gas Flow	0 Mscf/D
	% Liquid	100 %
	Pump Intake	942.8 psi (g)
	Producing BHP	730.9 psi (g)
	Static BHP	- * - psi (g)

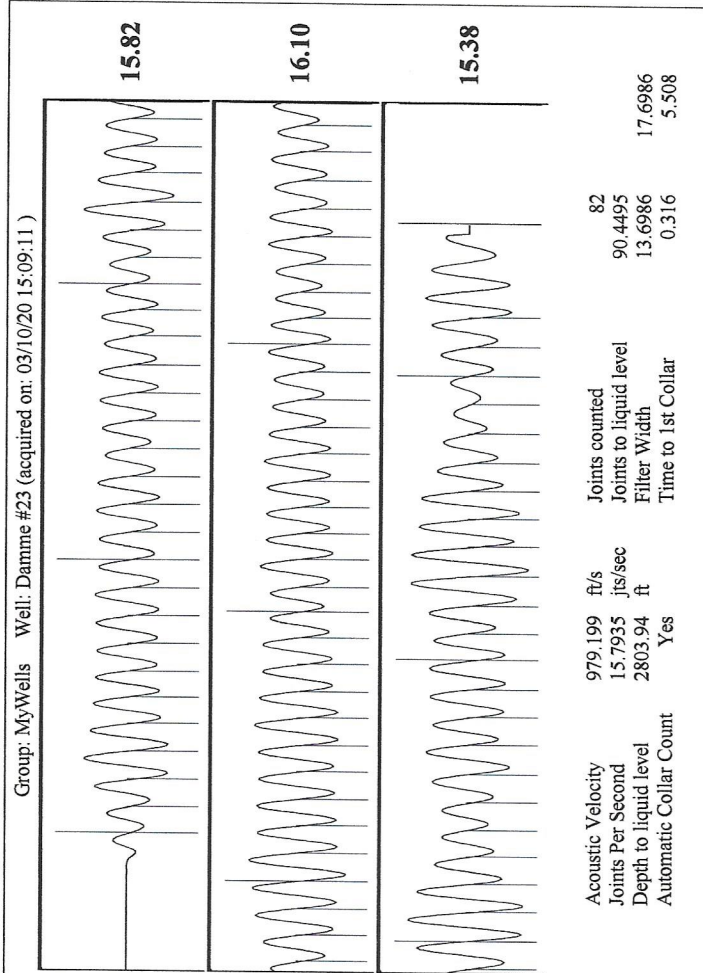
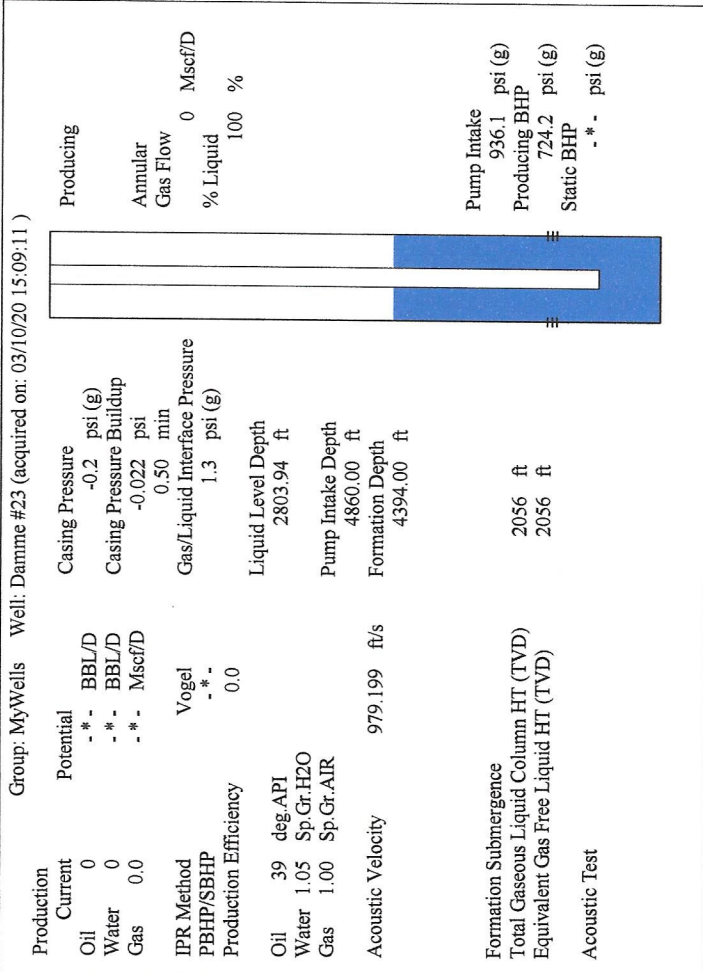
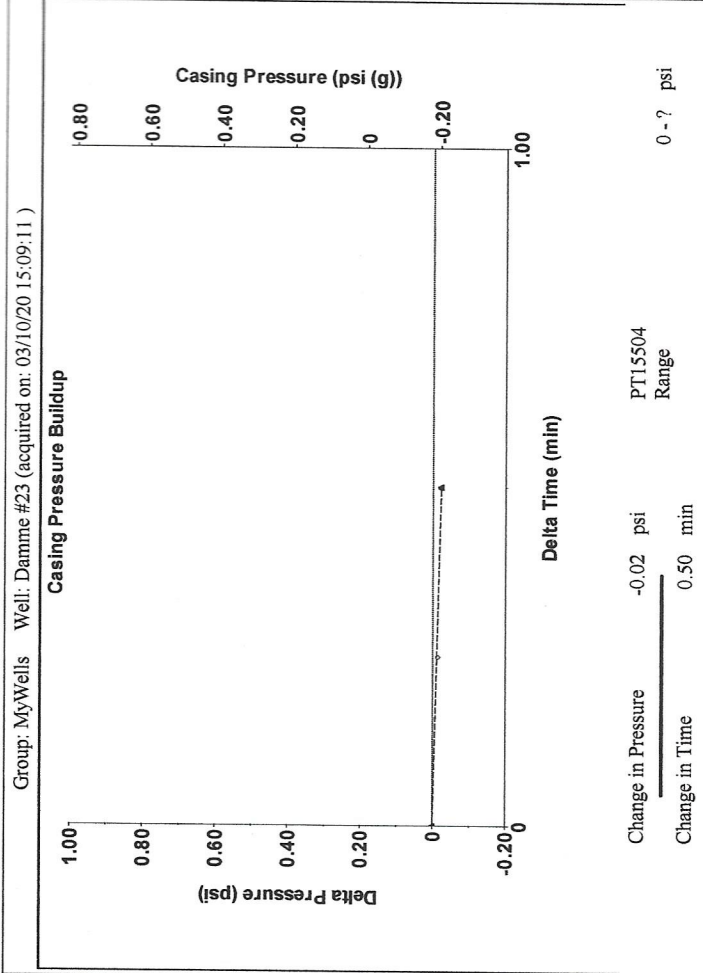
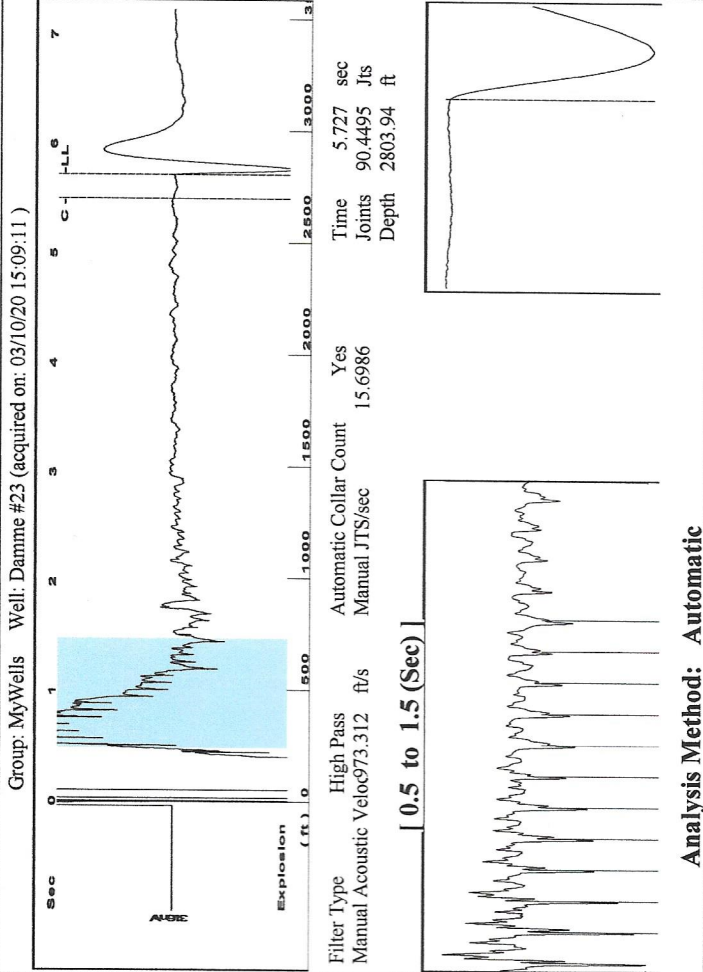
Producing	0.0
Annular Gas Flow	0.006
% Liquid	100
Pump Intake	942.8
Producing BHP	730.9
Static BHP	- * -

Producing	0.0
Annular Gas Flow	0.006
% Liquid	100
Pump Intake	942.8
Producing BHP	730.9
Static BHP	- * -



Change in Pressure 0.01 psi
 Change in Time 0.50 min
 PT15504 Range

Acoustic Velocity	972.502 ft/s	Joints counted	81
Joints Per Second	15.6855 jts/sec	Joints to liquid level	89.9878
Depth to liquid level	2789.62 ft	Filter Width	13.7978
Automatic Collar Count	Yes	Time to 1st Collar	5.476



December 08, 2020

Catherine H Stucky
Hartman Oil Co., Inc.
10500 E BERKELEY SQ PKWY STE 100
WICHITA, KS 67206-6816

Re: Temporary Abandonment
API 15-055-20368-00-00
DAMME 23
NE/4 Sec.33-22S-33W
Finney County, Kansas

Dear Catherine H Stucky:

"Your temporary abandonment (TA) application for the well listed above has been approved. In accordance with K.A.R. 82-3-111 the TA status of this well will expire 12/08/2021.

- * If you return this well to service or plug it, please notify the District Office.
- * If you sell this well you are required to file a Transfer of Operator form, T-1.
- * If the well will remain temporarily abandoned, you must submit a new TA application, CP-111, before 12/08/2021.

You may contact me at the number above if you have questions.

Very truly yours,

Michael Maier"