

KANSAS CORPORATION COMMISSION
OIL & GAS CONSERVATION DIVISION

Form must be Typed
Form must be signed

All blanks must be complete

TEMPORARY ABANDONMENT WELL APPLICATION

OPERATOR: License#
Name:
Address 1:
Address 2:
City: State: Zip:
Contact Person:
Phone:
Contact Person Email:
Field Contact Person:
Field Contact Person Phone:

API No. 15-
Spot Description:
Sec. Twp. S. R.
feet from N / S Line of Section
feet from E / W Line of Section
GPS Location: Lat: , Long:
Datum: NAD27 NAD83 WGS84
County: Elevation: GL KB
Lease Name: Well #:
Well Type: (check one) Oil Gas OG WSW Other:
SWD Permit #: ENHR Permit #:
Gas Storage Permit #:
Spud Date: Date Shut-In:

Table with 7 columns: Conductor, Surface, Production, Intermediate, Liner, Tubing. Rows include Size, Setting Depth, Amount of Cement, Top of Cement, Bottom of Cement.

Casing Fluid Level from Surface: How Determined? Date:
Casing Squeeze(s): to w / sacks of cement, to w / sacks of cement. Date:
Do you have a valid Oil & Gas Lease? Yes No
Depth and Type: Junk in Hole at Tools in Hole at Casing Leaks: Yes No Depth of casing leak(s):
Type Completion: ALT. I ALT. II Depth of: DV Tool: w / sacks of cement Port Collar: w / sack of cement
Packer Type: Size: Inch Set at: Feet
Total Depth: Plug Back Depth: Plug Back Method:

Geological Data:

Table with 4 columns: Formation Name, Formation Top, Formation Base, Completion Information. Rows 1 and 2.

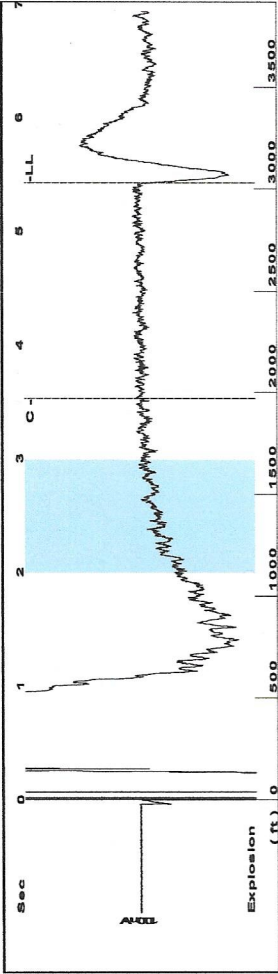
UNDER PENALTY OF PERJURY I HEREBY ATTEST THAT THE INFORMATION CONTAINED HEREIN IS TRUE AND CORRECT TO THE BEST OF MY KNOWLEDGE

Submitted Electronically

Do NOT Write in This Space - KCC USE ONLY
Date Tested: Results: Date Plugged: Date Repaired: Date Put Back in Service:
Review Completed by: Comments:
TA Approved: Yes Denied Date:

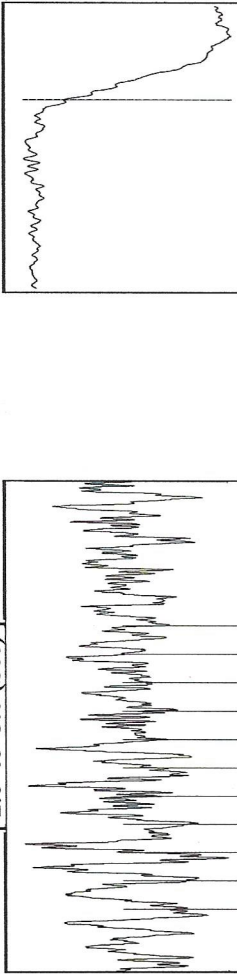
Mail to the Appropriate KCC Conservation Office:

Table with 3 columns: District Office #, Address, Phone. Rows 1-4.

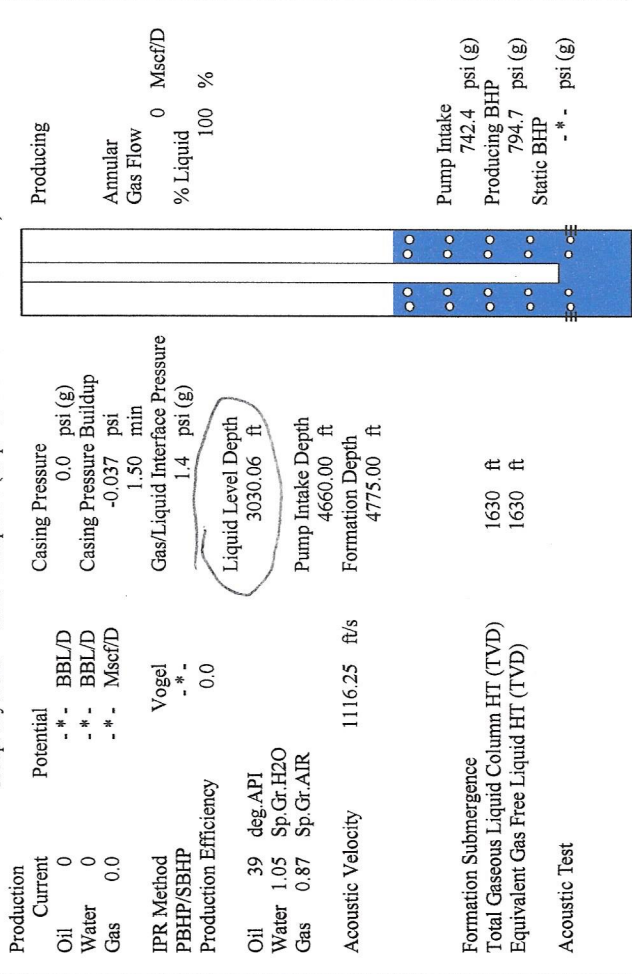


Filter Type High Pass Automatic Collar Count Yes Time 5.429 sec  
 Manual Acoustic Veloc 087.74 ft/s Manual JTS/sec 17.2712 Joints 96.2229 Jts  
 Depth 3030.06 ft

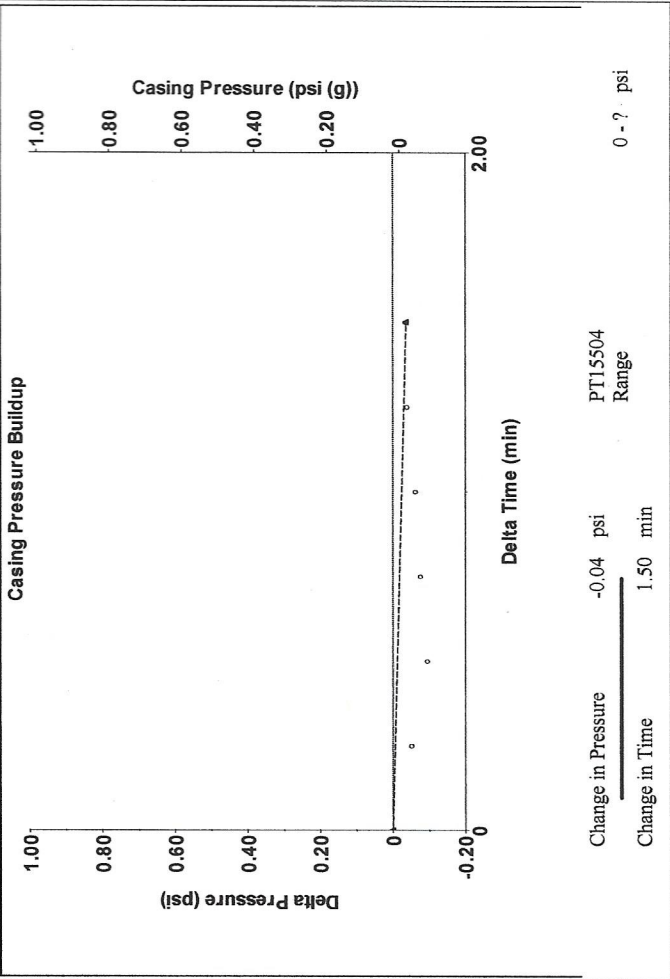
[ 2.0 to 3.0 (Sec) ]



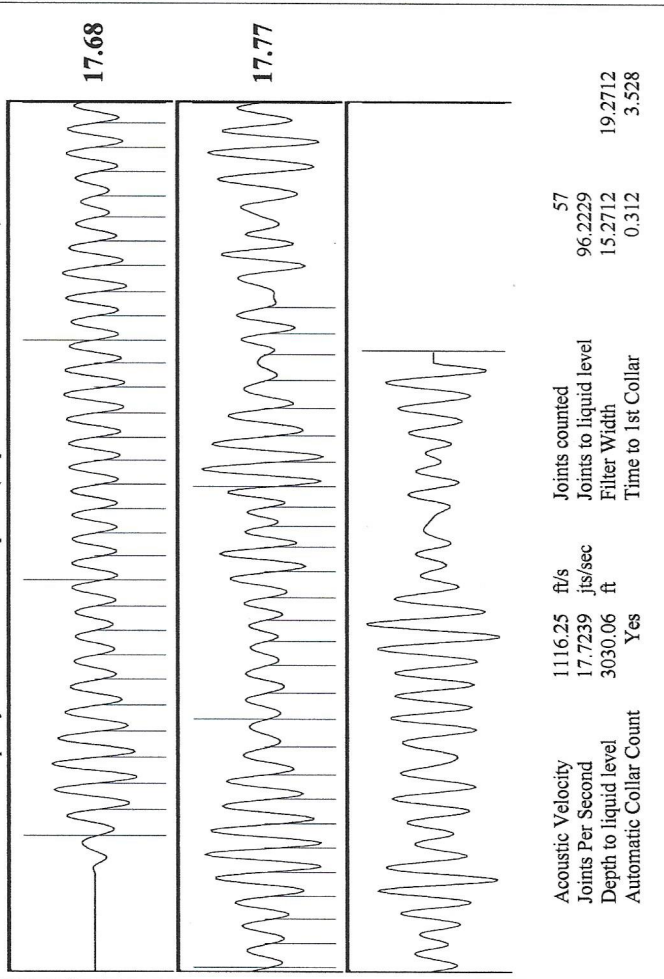
Analysis Method: Automatic



Production Current	Oil 0	Potential	- * - BBL/D
Water 0	Gas 0.0	Casing Pressure	0.0 psi (g)
IPR Method	PBHP/SBHP	Casing Pressure Buildup	-0.037 psi
Production Efficiency	Vogel	Gas/Liquid Interface Pressure	1.50 min
Oil 39 deg-API	- * -	Liquid Level Depth	3030.06 ft
Water 1.05 Sp.Gr:H2O	0.0	Pump Intake Depth	4660.00 ft
Gas 0.87 Sp.Gr:AIR		Formation Depth	4775.00 ft
Acoustic Velocity	1116.25 ft/s	Producing	
Formation Submergence		Annular Gas Flow	0 Mscf/D
Total Gaseous Liquid Column HT (TVD)	1630 ft	% Liquid	100 %
Equivalent Gas Free Liquid HT (TVD)	1630 ft	Pump Intake	742.4 psi (g)
Acoustic Test		Producing BHP	794.7 psi (g)
		Static BHP	- * - psi (g)

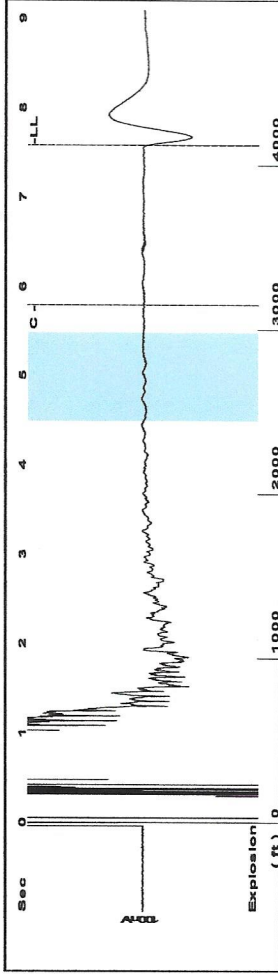


Change in Pressure -0.04 psi PT15504 Range  
 Change in Time 1.50 min



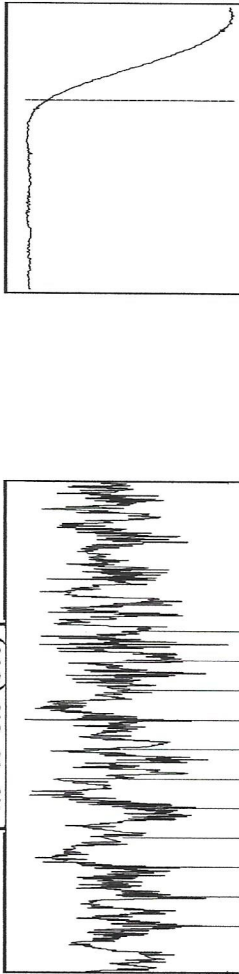
Production Current	Oil 0	Potential	- * - BBL/D
Water 0	Gas 0.0	Casing Pressure	0.0 psi (g)
IPR Method	PBHP/SBHP	Casing Pressure Buildup	-0.037 psi
Production Efficiency	Vogel	Gas/Liquid Interface Pressure	1.50 min
Oil 39 deg-API	- * -	Liquid Level Depth	3030.06 ft
Water 1.05 Sp.Gr:H2O	0.0	Pump Intake Depth	4660.00 ft
Gas 0.87 Sp.Gr:AIR		Formation Depth	4775.00 ft
Acoustic Velocity	1116.25 ft/s	Producing	
Formation Submergence		Annular Gas Flow	0 Mscf/D
Total Gaseous Liquid Column HT (TVD)	1630 ft	% Liquid	100 %
Equivalent Gas Free Liquid HT (TVD)	1630 ft	Pump Intake	742.4 psi (g)
Acoustic Test		Producing BHP	794.7 psi (g)
		Static BHP	- * - psi (g)

Group: MyWells Well: Finnup A#4 (acquired on: 06/08/16 11:03:05 )



Filter Type High Pass  
 Manual Acoustic Veloc 1046.18 ft/s  
 Automatic Collar Count Yes  
 Manual JTS/sec 16.6113  
 Time 7.584 sec  
 Joints 130.901 Jts  
 Depth 4122.08 ft

[ 4.5 to 5.5 (Sec) ]



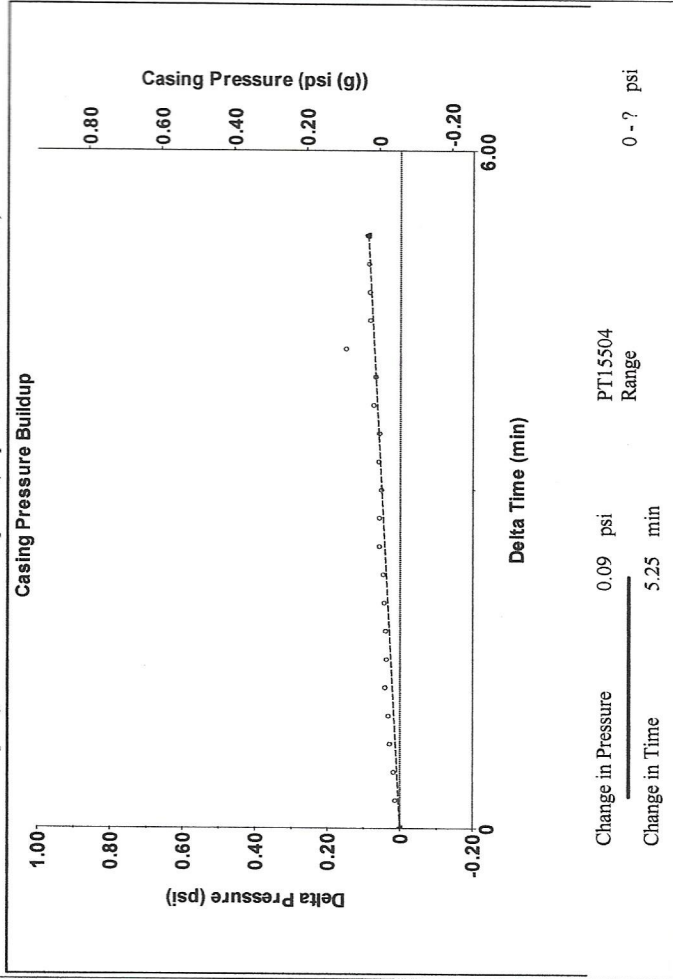
**Analysis Method: Automatic**

Group: MyWells Well: Finnup A#4 (acquired on: 06/08/16 11:03:05 )

Production	Potential	Casing Pressure	-0.1 psi (g)
Current	BBL/D	Casing Pressure Buildup	0.089 psi
Oil	0	Gas/Liquid Interface Pressure	5.25 min
Water	220	Liquid Level Depth	1.9 psi (g)
Gas	0.0	Pump Intake Depth	4122.08 ft
IPR Method	Vogel	Pump Intake Depth	4660.00 ft
PBHP/SBHP	- * -	Formation Depth	4775.00 ft
Production Efficiency	0.0	Acoustic Velocity	1087.05 ft/s
Oil	39 deg API	Formation Submergence	538 ft
Water	1.05 Sp.Gr:H2O	Total Gaseous Liquid Column HT (TVD)	533 ft
Gas	0.90 Sp.Gr:AIR	Equivalent Gas Free Liquid HT (TVD)	
Acoustic Velocity	1087.05 ft/s	Acoustic Test	

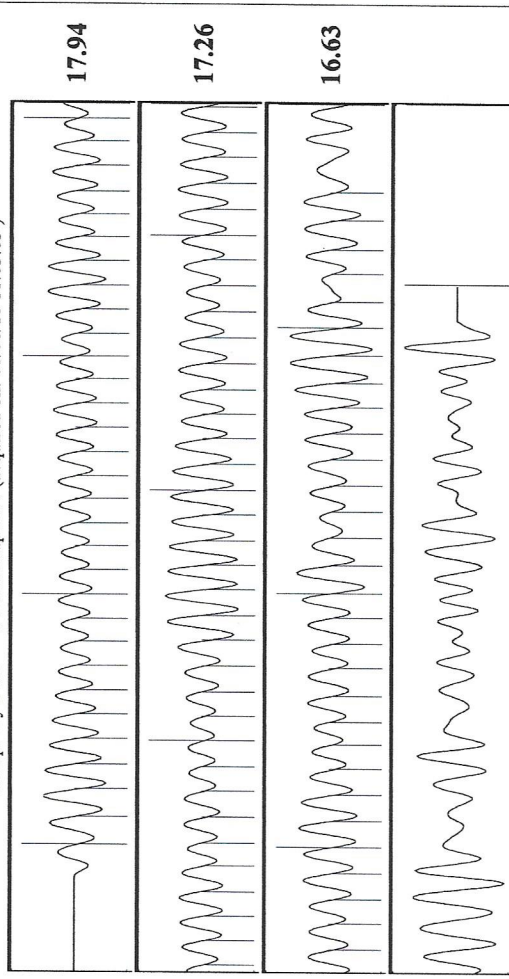
Producing	Annular Gas Flow	1 Mscf/D
	% Liquid	99 %
Pump Intake	244.1 psi (g)	
Producing BHP	296.1 psi (g)	
Static BHP	- * - psi (g)	

Group: MyWells Well: Finnup A#4 (acquired on: 06/08/16 11:03:05 )



Change in Pressure 0.09 psi  
 Change in Time 5.25 min  
 PT15504 Range

Group: MyWells Well: Finnup A#4 (acquired on: 06/08/16 11:03:05 )



Acoustic Velocity 1087.05 ft/s  
 Joints Per Second 17.2602 jts/sec  
 Depth to liquid level 4122.08 ft  
 Automatic Collar Count Yes  
 Joints counted 95  
 Joints to liquid level 130.901  
 Filter Width 14.6113  
 Time to 1st Collar 0.292

December 08, 2020

Catherine H Stucky  
Hartman Oil Co., Inc.  
10500 E BERKELEY SQ PKWY STE 100  
WICHITA, KS 67206-6816

Re: Temporary Abandonment  
API 15-055-10055-00-00  
FINNUP A4  
NW/4 Sec.34-22S-33W  
Finney County, Kansas

Dear Catherine H Stucky:

"Your temporary abandonment (TA) application for the well listed above has been approved. In accordance with K.A.R. 82-3-111 the TA status of this well will expire 12/08/2021.

- \* If you return this well to service or plug it, please notify the District Office.
- \* If you sell this well you are required to file a Transfer of Operator form, T-1.
- \* If the well will remain temporarily abandoned, you must submit a new TA application, CP-111, before 12/08/2021.

You may contact me at the number above if you have questions.

Very truly yours,

Michael Maier"