

KANSAS CORPORATION COMMISSION
OIL & GAS CONSERVATION DIVISION

TEMPORARY ABANDONMENT WELL APPLICATION

OPERATOR: License# \_\_\_\_\_
Name: \_\_\_\_\_
Address 1: \_\_\_\_\_
Address 2: \_\_\_\_\_
City: \_\_\_\_\_ State: \_\_\_\_\_ Zip: \_\_\_\_\_ + \_\_\_\_\_
Contact Person: \_\_\_\_\_
Phone:( \_\_\_\_\_ ) \_\_\_\_\_
Contact Person Email: \_\_\_\_\_
Field Contact Person: \_\_\_\_\_
Field Contact Person Phone: ( \_\_\_\_\_ ) \_\_\_\_\_

API No. 15- \_\_\_\_\_
Spot Description: \_\_\_\_\_
- - - - - Sec. \_\_\_\_\_ Twp. \_\_\_\_\_ S. R. \_\_\_\_\_  E  W
\_\_\_\_\_ feet from  N /  S Line of Section
\_\_\_\_\_ feet from  E /  W Line of Section
GPS Location: Lat: \_\_\_\_\_, Long: \_\_\_\_\_
Datum:  NAD27  NAD83  WGS84
County: \_\_\_\_\_ Elevation: \_\_\_\_\_  GL  KB
Lease Name: \_\_\_\_\_ Well #: \_\_\_\_\_
Well Type: (check one)  Oil  Gas  OG  WSW  Other: \_\_\_\_\_
 SWD Permit #: \_\_\_\_\_  ENHR Permit #: \_\_\_\_\_
 Gas Storage Permit #: \_\_\_\_\_
Spud Date: \_\_\_\_\_ Date Shut-In: \_\_\_\_\_

Table with 7 columns: Conductor, Surface, Production, Intermediate, Liner, Tubing. Rows include Size, Setting Depth, Amount of Cement, Top of Cement, Bottom of Cement.

Casing Fluid Level from Surface: \_\_\_\_\_ How Determined? \_\_\_\_\_ Date: \_\_\_\_\_
Casing Squeeze(s): \_\_\_\_\_ to \_\_\_\_\_ w / \_\_\_\_\_ sacks of cement, \_\_\_\_\_ to \_\_\_\_\_ w / \_\_\_\_\_ sacks of cement. Date: \_\_\_\_\_
Do you have a valid Oil & Gas Lease?  Yes  No
Depth and Type:  Junk in Hole at \_\_\_\_\_ (depth)  Tools in Hole at \_\_\_\_\_ (depth) Casing Leaks:  Yes  No Depth of casing leak(s): \_\_\_\_\_
Type Completion:  ALT. I  ALT. II Depth of:  DV Tool: \_\_\_\_\_ w / \_\_\_\_\_ sacks of cement  Port Collar: \_\_\_\_\_ w / \_\_\_\_\_ sack of cement
Packer Type: \_\_\_\_\_ Size: \_\_\_\_\_ Inch Set at: \_\_\_\_\_ Feet
Total Depth: \_\_\_\_\_ Plug Back Depth: \_\_\_\_\_ Plug Back Method: \_\_\_\_\_

Geological Date:

Table with 4 columns: Formation Name, Formation Top, Formation Base, Completion Information. Rows 1 and 2.

UNDER PENALTY OF PERJURY I HEREBY ATTEST THAT THE INFORMATION CONTAINED HEREIN IS TRUE AND CORRECT TO THE BEST OF MY KNOWLEDGE

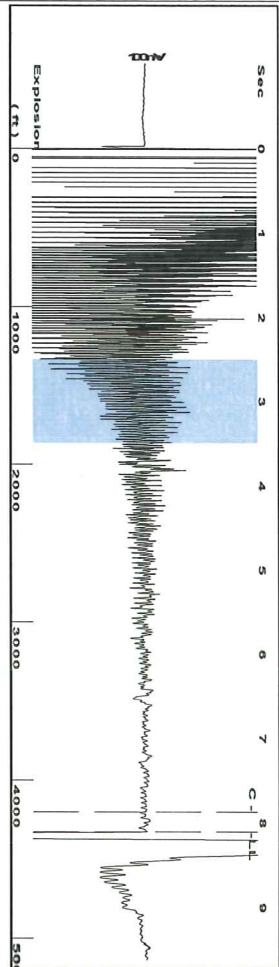
Submitted Electronically

Do NOT Write in This Space - KCC USE ONLY
Date Tested: \_\_\_\_\_ Results: \_\_\_\_\_ Date Plugged: \_\_\_\_\_ Date Repaired: \_\_\_\_\_ Date Put Back in Service: \_\_\_\_\_
Review Completed by: \_\_\_\_\_ Comments: \_\_\_\_\_
TA Approved:  Yes  Denied Date: \_\_\_\_\_

Mail to the Appropriate KCC Conservation Office:

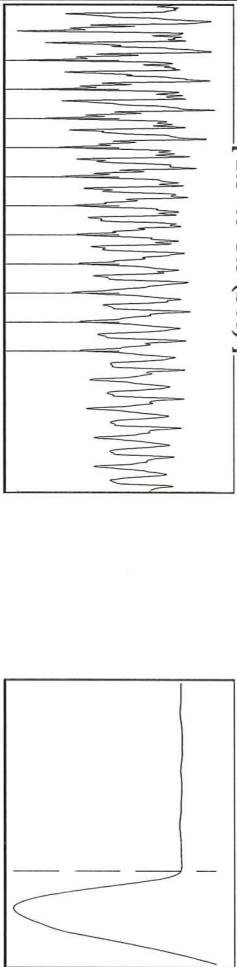
Table with 3 columns: District Office, Address, Phone. Rows for District Office #1, #2, #3, #4.

Group: Indian Oil Well: Nusser3 (acquired on: 11/09/20 10:14:40)



Filter Type: High Pass  
Manual Acoustic Velocity: 1061.98 ft/s  
Automatic Collar Count: Yes  
Manual JTS/sec: 16.7504  
Time: 8.105 sec  
Joints: 136.505 Jts  
Depth: 4327.22 ft

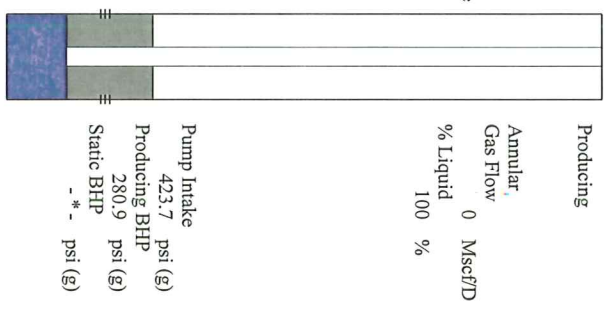
[ 2.5 to 3.5 (Sec) ]



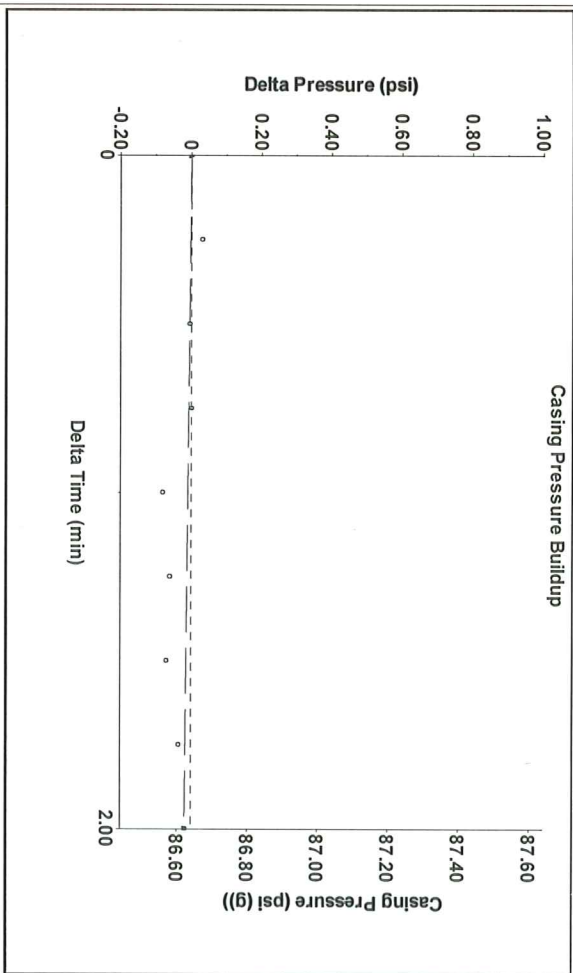
Analysis Method: Automatic

Group: Indian Oil Well: Nusser3 (acquired on: 11/09/20 10:14:40)

Production	Potential	Casing Pressure	Producing
Current	-*- BBL/D	86.6 psi (g)	Annular
Oil	-*- BBL/D	Casing Pressure Buildup	Gas Flow
Water	-*- BBL/D	-0.0 psi	% Liquid
Gas	-*- Mscf/D	2.00 min	100 %
IPR Method	Vogel	Gas/Liquid Interface Pressure	
PBHP/SBHP	-*-	101.2 psi (g)	
Production Efficiency	0.0		
Oil	40 deg API	Liquid Level Depth	
Water	1.05 Sp.Gr:H2O	4327.22 ft	
Gas	0.91 Sp.Gr:AIR	Pump Intake Depth	
Acoustic Velocity	1067.79 ft/s	5292.00 ft	
		Formation Depth	
		4860.00 ft	
Formation Submergence			
Total Gaseous Liquid Column HT (TVD)			
Equivalent Gas Free Liquid HT (TVD)			
11-09-20			

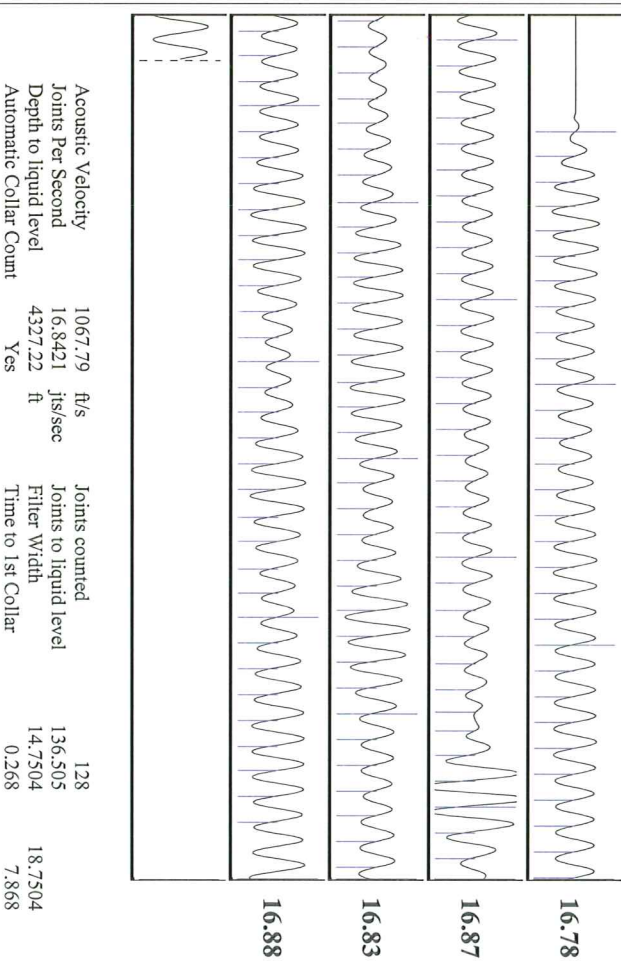


Group: Indian Oil Well: Nusser3 (acquired on: 11/09/20 10:14:40)



Change in Pressure: -0.02 psi  
Change in Time: 2.00 min  
PT 15565  
Range: 0 - ? psi

Group: Indian Oil Well: Nusser3 (acquired on: 11/09/20 10:14:40)



Acoustic Velocity: 1067.79 ft/s  
Joints Per Second: 16.8421 jts/sec  
Depth to liquid level: 4327.22 ft  
Automatic Collar Count: Yes

Joints counted: 128  
Joints to liquid level: 136.505  
Filter Width: 14.7504  
Time to 1st Collar: 7.868

December 08, 2020

Anthony Farrar  
Indian Oil Co., Inc.  
308 S. Main St.  
PO BOX 209  
MEDICINE LODGE, KS 67104-0209

Re: Temporary Abandonment  
API 15-007-24016-00-00  
NUSSER 3-16  
NW/4 Sec.16-35S-12W  
Barber County, Kansas

Dear Anthony Farrar:

"Your temporary abandonment (TA) application for the well listed above has been approved. In accordance with K.A.R. 82-3-111 the TA status of this well will expire 12/08/2021.

- \* If you return this well to service or plug it, please notify the District Office.
- \* If you sell this well you are required to file a Transfer of Operator form, T-1.
- \* If the well will remain temporarily abandoned, you must submit a new TA application, CP-111, before 12/08/2021.

You may contact me at the number above if you have questions.

Very truly yours,

Michael Maier"