

KANSAS CORPORATION COMMISSION
OIL & GAS CONSERVATION DIVISION

TEMPORARY ABANDONMENT WELL APPLICATION

OPERATOR: License# _____
 Name: _____
 Address 1: _____
 Address 2: _____
 City: _____ State: _____ Zip: _____ + _____
 Contact Person: _____
 Phone: (_____) _____
 Contact Person Email: _____
 Field Contact Person: _____
 Field Contact Person Phone: (_____) _____

API No. 15- _____
 Spot Description: _____
 _____ - _____ - _____ - _____ Sec. _____ Twp. _____ S. R. _____ E W
 _____ feet from N / S Line of Section
 _____ feet from E / W Line of Section
 GPS Location: Lat: _____, Long: _____
(e.g. xx.xxxxx) (e.g. -xxx.xxxxx)
 Datum: NAD27 NAD83 WGS84
 County: _____ Elevation: _____ GL KB
 Lease Name: _____ Well #: _____
 Well Type: (check one) Oil Gas OG WSW Other: _____
 SWD Permit #: _____ ENHR Permit #: _____
 Gas Storage Permit #: _____
 Spud Date: _____ Date Shut-In: _____

	Conductor	Surface	Production	Intermediate	Liner	Tubing
Size						
Setting Depth						
Amount of Cement						
Top of Cement						
Bottom of Cement						

Casing Fluid Level from Surface: _____ How Determined? _____ Date: _____
 Casing Squeeze(s): _____ to _____ w / _____ sacks of cement, _____ to _____ w / _____ sacks of cement. Date: _____
(top) (bottom) (top) (bottom)
 Do you have a valid Oil & Gas Lease? Yes No
 Depth and Type: Junk in Hole at _____ Tools in Hole at _____ Casing Leaks: Yes No Depth of casing leak(s): _____
(depth) (depth)
 Type Completion: ALT. I ALT. II Depth of: DV Tool: _____ w / _____ sacks of cement Port Collar: _____ w / _____ sack of cement
(depth) (depth)
 Packer Type: _____ Size: _____ Inch Set at: _____ Feet
 Total Depth: _____ Plug Back Depth: _____ Plug Back Method: _____

Geological Data:

Formation Name	Formation Top	Formation Base	Completion Information
1. _____	At: _____	to _____ Feet	Perforation Interval _____ to _____ Feet or Open Hole Interval _____ to _____ Feet
2. _____	At: _____	to _____ Feet	Perforation Interval _____ to _____ Feet or Open Hole Interval _____ to _____ Feet

UNDER PENALTY OF PERJURY I HEREBY ATTEST THAT THE INFORMATION CONTAINED HEREIN IS TRUE AND CORRECT TO THE BEST OF MY KNOWLEDGE

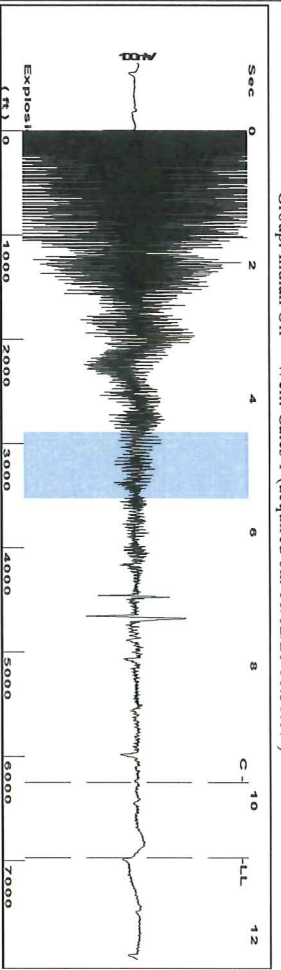
Submitted Electronically

Do NOT Write in This Space - KCC USE ONLY	Date Tested: _____	Results: _____	Date Plugged: _____	Date Repaired: _____	Date Put Back in Service: _____
	Review Completed by: _____ Comments: _____				
TA Approved: <input type="checkbox"/> Yes <input type="checkbox"/> Denied Date: _____					

Mail to the Appropriate KCC Conservation Office:

	KCC District Office #1 - 210 E. Frontview, Suite A, Dodge City, KS 67801	Phone 620.682.7933
	KCC District Office #2 - 3450 N. Rock Road, Building 600, Suite 601, Wichita, KS 67226	Phone 316.337.7400
	KCC District Office #3 - 137 E. 21st St., Chanute, KS 66720	Phone 620.902.6450
	KCC District Office #4 - 2301 E. 13th Street, Hays, KS 67601-2651	Phone 785.261.6250

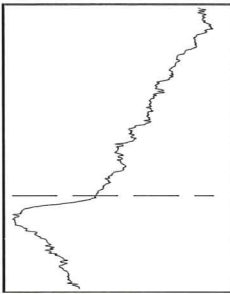
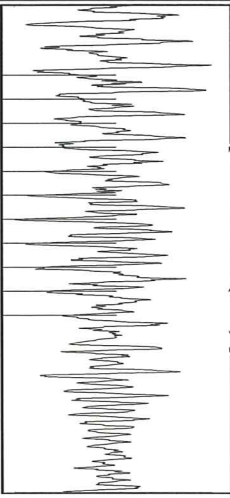
Group: Indian Oil Well: Gates I (acquired on: 11/02/20 08:31:07)



Filter Type High Pass
Manual Acoustic Velocity 1286 ft/s
Automatic Collar Count Yes
Manual JTS/sec 20.284

Time 10.866 sec
Joints 219.879 Jts
Depth 6970.18 ft

[4.5 to 5.5 (Sec)]



Analysis Method: Automatic

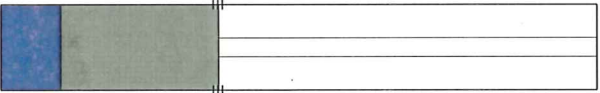
Group: Indian Oil Well: Gates I (acquired on: 11/02/20 08:31:07)

Production	Potential	Casing Pressure
Current - * -	BBL/D - * -	639.4 psi (g)
Water - * -	BBL/D - * -	Casing Pressure Buildup -0.0 psi
Gas - * -	Mscf/D - * -	2.25 min
IPR Method Vogel		Gas/Liquid Interface Pressure 760.5 psi (g)
PBHP/SBHP - * -		Liquid Level Depth 6970.18 ft
Production Efficiency 0.0		Pump Intake Depth 4664.00 ft
Oil 40 deg.API		Formation Depth 4675.00 ft
Water 1.05 Sp.Gr.H2O		
Gas 0.69 Sp.Gr.AIR		
Acoustic Velocity 1282.93 ft/s		

Producing	Annular Gas Flow
0 Mscf/D	% Liquid 100 %

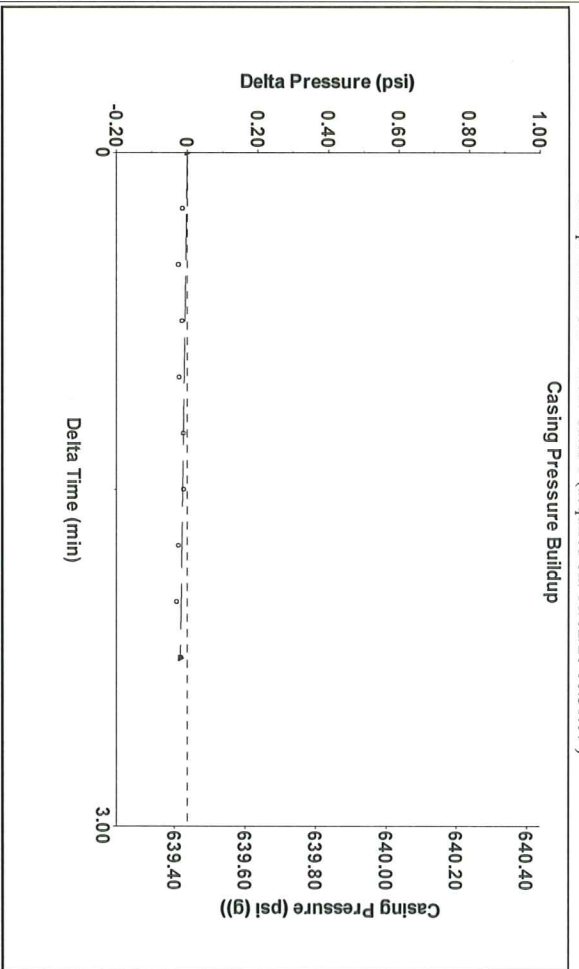
Formation Submergence
Total Gaseous Liquid Column HT (TVD)
Equivalent Gas Free Liquid HT (TVDF)
11-02-20

- * - ft
- * - ft



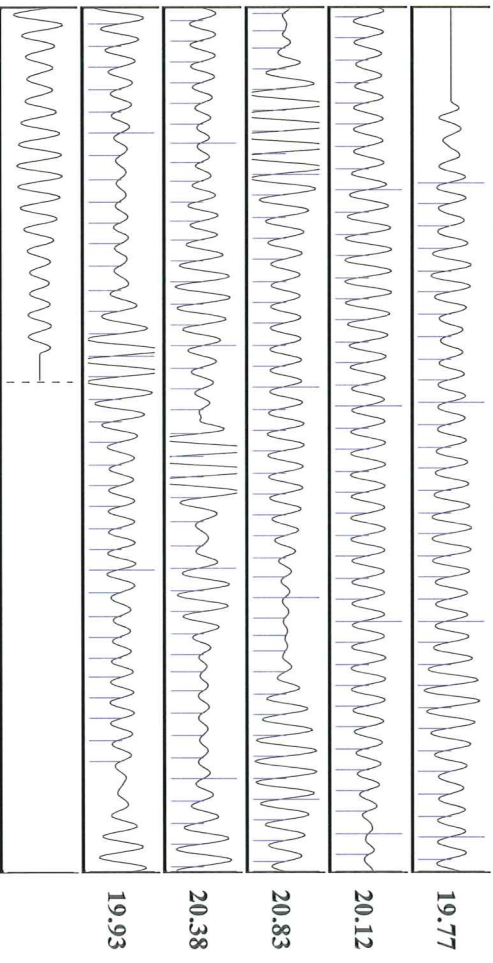
Pump Intake	Producing BHP	Static BHP
721.7 psi (g)	721.9 psi (g)	- * - psi (g)

Group: Indian Oil Well: Gates I (acquired on: 11/02/20 08:31:07)



Change in Pressure -0.02 psi
Change in Time 2.25 min
PT 15565
Range 0 - ? psi

Group: Indian Oil Well: Gates I (acquired on: 11/02/20 08:31:07)



Acoustic Velocity	Joints Per Second	Depth to liquid level	Automatic Collar Count	Joints counted	Joints to liquid level
1282.93 ft/s	20.2355 Jts/sec	6970.18 ft	Yes	189	219.879
					18.284
					0.404
					9.744

December 14, 2020

Anthony Farrar
Indian Oil Co., Inc.
308 S. Main St.
PO BOX 209
MEDICINE LODGE, KS 67104-0209

Re: Temporary Abandonment
API 15-077-21726-00-00
GATES 1
SW/4 Sec.02-34S-08W
Harper County, Kansas

Dear Anthony Farrar:

"Your temporary abandonment (TA) application for the well listed above has been approved. In accordance with K.A.R. 82-3-111 the TA status of this well will expire 12/14/2021.

- * If you return this well to service or plug it, please notify the District Office.
- * If you sell this well you are required to file a Transfer of Operator form, T-1.
- * If the well will remain temporarily abandoned, you must submit a new TA application, CP-111, before 12/14/2021.

You may contact me at the number above if you have questions.

Very truly yours,

Steve VanGieson"