

KANSAS CORPORATION COMMISSION
OIL & GAS CONSERVATION DIVISION

Form must be Typed
Form must be signed

TEMPORARY ABANDONMENT WELL APPLICATION

All blanks must be complete

OPERATOR: License#
Name:
Address 1:
Address 2:
City: State: Zip:
Contact Person:
Phone:
Contact Person Email:
Field Contact Person:
Field Contact Person Phone:

API No. 15-
Spot Description:
Sec. Twp. S. R.
feet from N / S Line of Section
feet from E / W Line of Section
GPS Location: Lat: , Long:
Datum: NAD27 NAD83 WGS84
County: Elevation: GL KB
Lease Name: Well #:
Well Type: Oil Gas OG WSW Other:
SWD Permit #: ENHR Permit #:
Gas Storage Permit #:
Spud Date: Date Shut-In:

Table with 7 columns: Conductor, Surface, Production, Intermediate, Liner, Tubing. Rows include Size, Setting Depth, Amount of Cement, Top of Cement, Bottom of Cement.

Casing Fluid Level from Surface: How Determined? Date:
Casing Squeeze(s): to w / sacks of cement, to w / sacks of cement. Date:
Do you have a valid Oil & Gas Lease? Yes No
Depth and Type: Junk in Hole at Tools in Hole at Casing Leaks: Yes No Depth of casing leak(s):
Type Completion: ALT. I ALT. II Depth of: DV Tool: w / sacks of cement Port Collar: w / sack of cement
Packer Type: Size: Inch Set at: Feet
Total Depth: Plug Back Depth: Plug Back Method:

Geological Data:

Table with 4 columns: Formation Name, Formation Top, Formation Base, Completion Information. Rows 1 and 2.

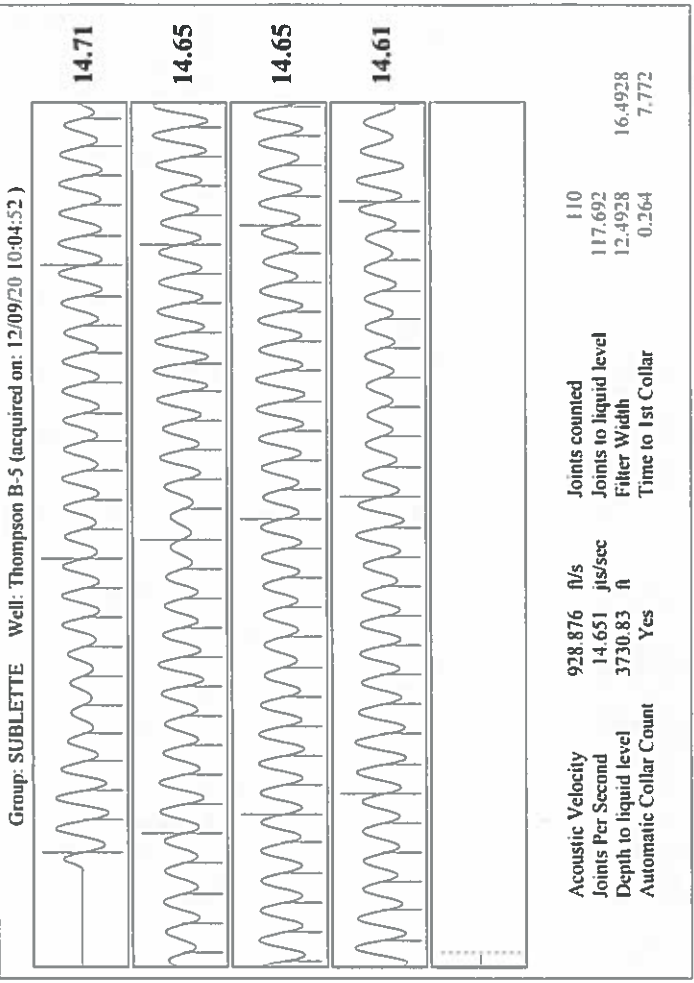
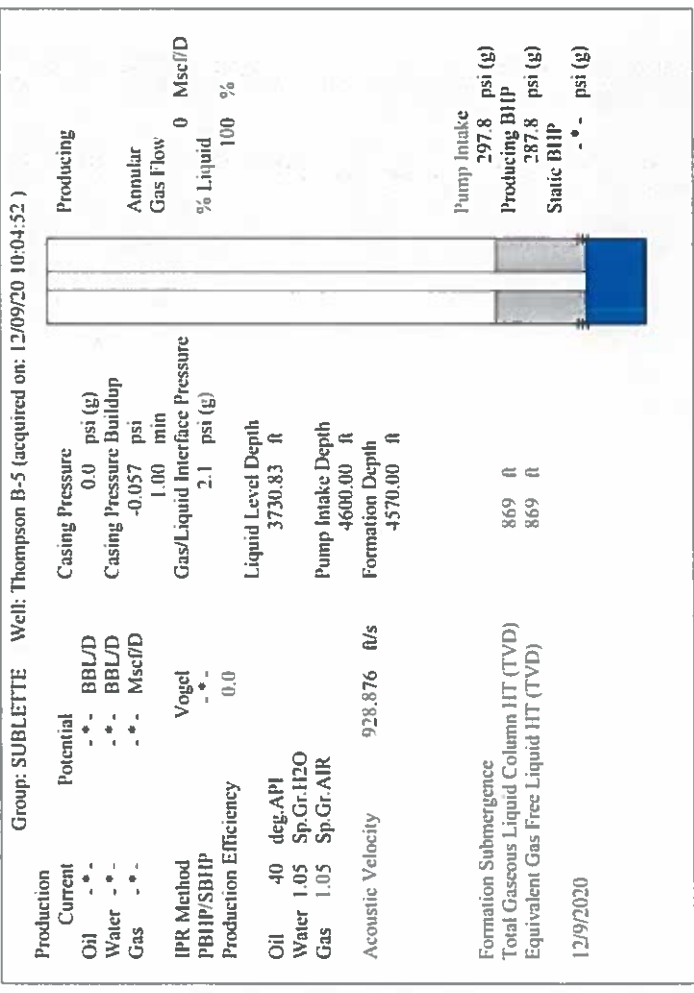
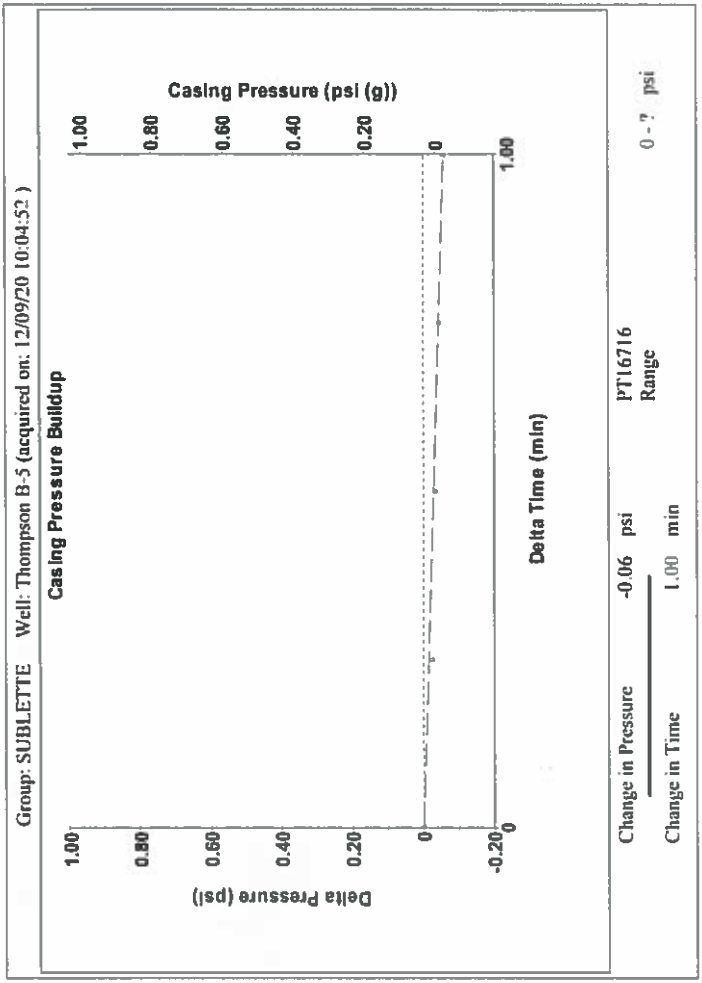
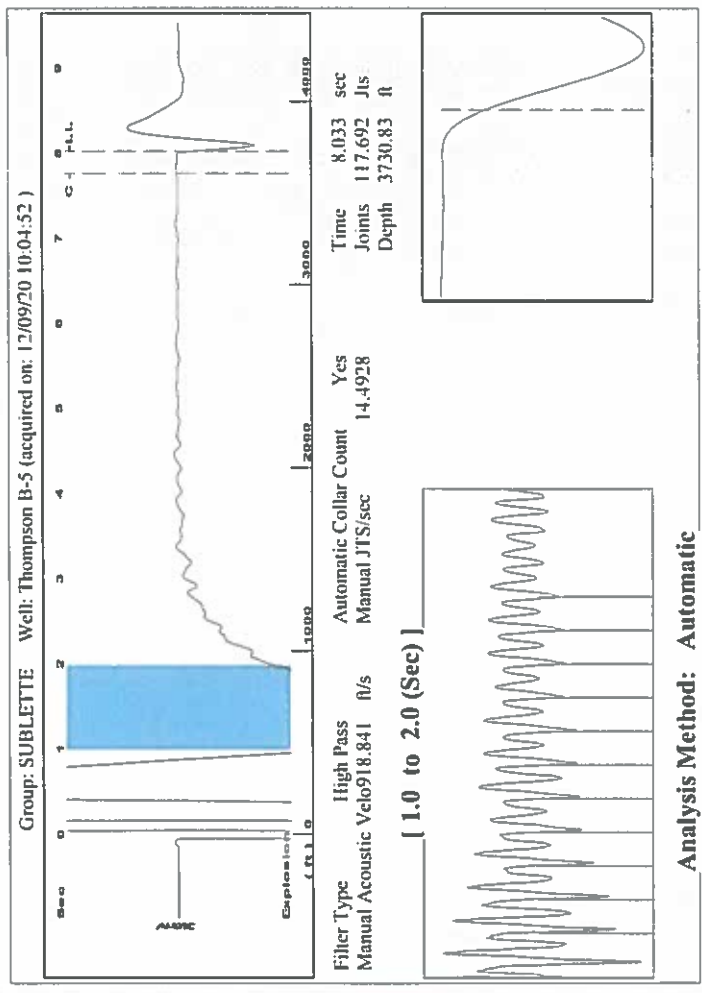
UNDER PENALTY OF PERJURY I HEREBY ATTEST THAT THE INFORMATION CONTAINED HEREIN IS TRUE AND CORRECT TO THE BEST OF MY KNOWLEDGE

Submitted Electronically

Do NOT Write in This Space - KCC USE ONLY
Date Tested: Results: Date Plugged: Date Repaired: Date Put Back in Service:
Review Completed by: Comments:
TA Approved: Yes Denied Date:

Mail to the Appropriate KCC Conservation Office:

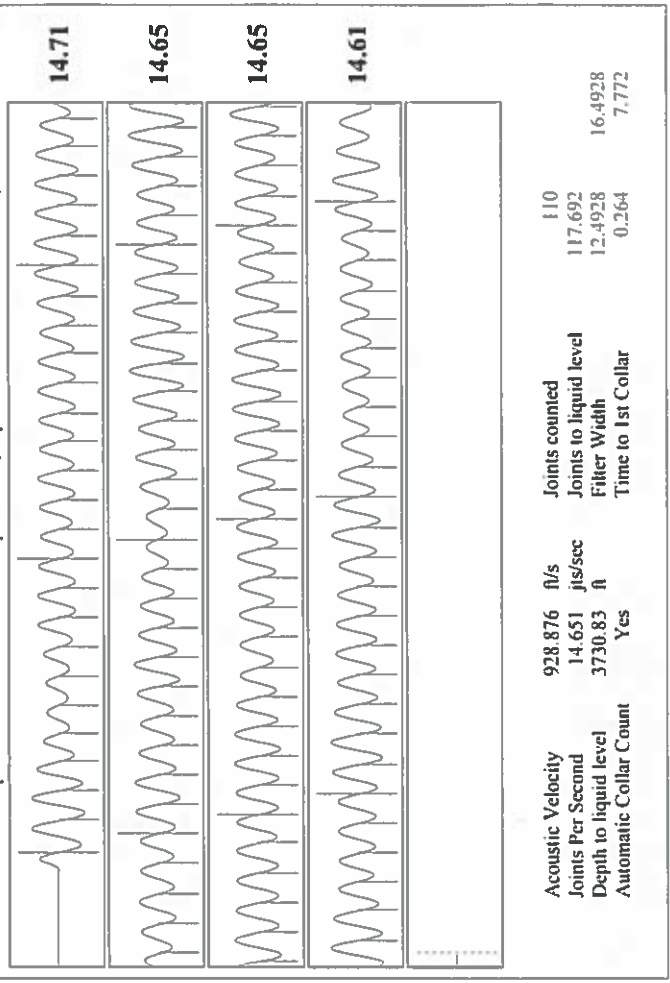
Table with 3 columns: District Office #, Address, Phone. Rows 1-4.



Analysis Method: Automatic

Production	Potential	Casing Pressure	0.0 psi (g)
Oil	-*- BBL/D	Casing Pressure Buildup	-0.057 psi
Water	-*- BBL/D	Gas/Liquid Interface Pressure	2.1 psi (g)
Gas	-*- Mscf/D	Liquid Level Depth	3730.83 ft
IPR Method	Vogel	Pump Intake Depth	4600.00 ft
PBHP/SBHP	-*-	Formation Depth	4570.00 ft
Production Efficiency	0.0	Acoustic Velocity	928.876 ft/s
Oil	40 deg-API	Formation Submergence	869 ft
Water	1.05 Sp.Gr.H2O	Total Gaseous Liquid Column HT (TVL)	869 ft
Gas	1.05 Sp.Gr.AIR	Equivalent Gas Free Liquid HT (TVL)	869 ft
Acoustic Velocity	928.876 ft/s	12/9/2020	

Producing	Annular Gas Flow	0 Mscf/D
% Liquid	100 %	
Pump Intake	297.8 psi (g)	
Producing BHPP	287.8 psi (g)	
Static BHPP	-*- psi (g)	



Acoustic Velocity	928.876 ft/s	Joints counted	110
Joints Per Second	14.651 jts/sec	Joints to liquid level	117.692
Depth to liquid level	3730.83 ft	Filter Width	16.4928
Automatic Collar Count	Yes	Time to 1st Collar	7.772

December 17, 2020

Katherine McClurkan
Merit Energy Company, LLC
13727 Noel Road, Suite 1200
Dallas, TX 75240

Re: Temporary Abandonment
API 15-081-21113-00-00
Thompson B 5
NW/4 Sec.31-30S-33W
Haskell County, Kansas

Dear Katherine McClurkan:

"Your temporary abandonment (TA) application for the well listed above has been approved. In accordance with K.A.R. 82-3-111 the TA status of this well will expire 12/17/2021.

- * If you return this well to service or plug it, please notify the District Office.
- * If you sell this well you are required to file a Transfer of Operator form, T-1.
- * If the well will remain temporarily abandoned, you must submit a new TA application, CP-111, before 12/17/2021.

You may contact me at the number above if you have questions.

Very truly yours,

Michael Maier"