

KANSAS CORPORATION COMMISSION
OIL & GAS CONSERVATION DIVISION

TEMPORARY ABANDONMENT WELL APPLICATION

OPERATOR: License#
Name:
Address 1:
Address 2:
City: State: Zip:
Contact Person:
Phone:
Contact Person Email:
Field Contact Person:
Field Contact Person Phone:

API No. 15-
Spot Description:
Sec. Twp. S. R.
feet from N / S Line of Section
feet from E / W Line of Section
GPS Location: Lat: , Long:
Datum: NAD27 NAD83 WGS84
County: Elevation: GL KB
Lease Name: Well #:
Well Type: (check one) Oil Gas OG WSW Other:
SWD Permit #: ENHR Permit #:
Gas Storage Permit #:
Spud Date: Date Shut-In:

Table with 7 columns: Conductor, Surface, Production, Intermediate, Liner, Tubing. Rows include Size, Setting Depth, Amount of Cement, Top of Cement, Bottom of Cement.

Casing Fluid Level from Surface: How Determined? Date:
Casing Squeeze(s): to w / sacks of cement, to w / sacks of cement. Date:
Do you have a valid Oil & Gas Lease? Yes No
Depth and Type: Junk in Hole at Tools in Hole at Casing Leaks: Yes No Depth of casing leak(s):
Type Completion: ALT. I ALT. II Depth of: DV Tool: w / sacks of cement Port Collar: w / sack of cement
Packer Type: Size: Inch Set at: Feet
Total Depth: Plug Back Depth: Plug Back Method:

Geological Date:

Table with 4 columns: Formation Name, Formation Top, Formation Base, Completion Information. Rows 1 and 2.

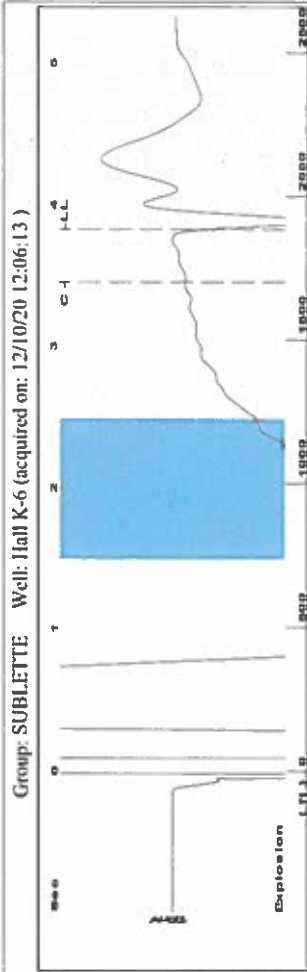
UNDER PENALTY OF PERJURY I HEREBY ATTEST THAT THE INFORMATION CONTAINED HEREIN IS TRUE AND CORRECT TO THE BEST OF MY KNOWLEDGE

Submitted Electronically

Do NOT Write in This Space - KCC USE ONLY
Date Tested: Results: Date Plugged: Date Repaired: Date Put Back in Service:
Review Completed by: Comments:
TA Approved: Yes Denied Date:

Mail to the Appropriate KCC Conservation Office:

Table with 3 columns: District Office, Address, Phone. Rows for District Office #1, #2, #3, #4.



Time 3.831 sec
 Joints 59,8594 J/s
 Depth 1884.97 ft

Automatic Collar Count Yes
 Manual JTS/sec 15,8228

High Pass
 Manual Acoustic Velocity 519 ft/s

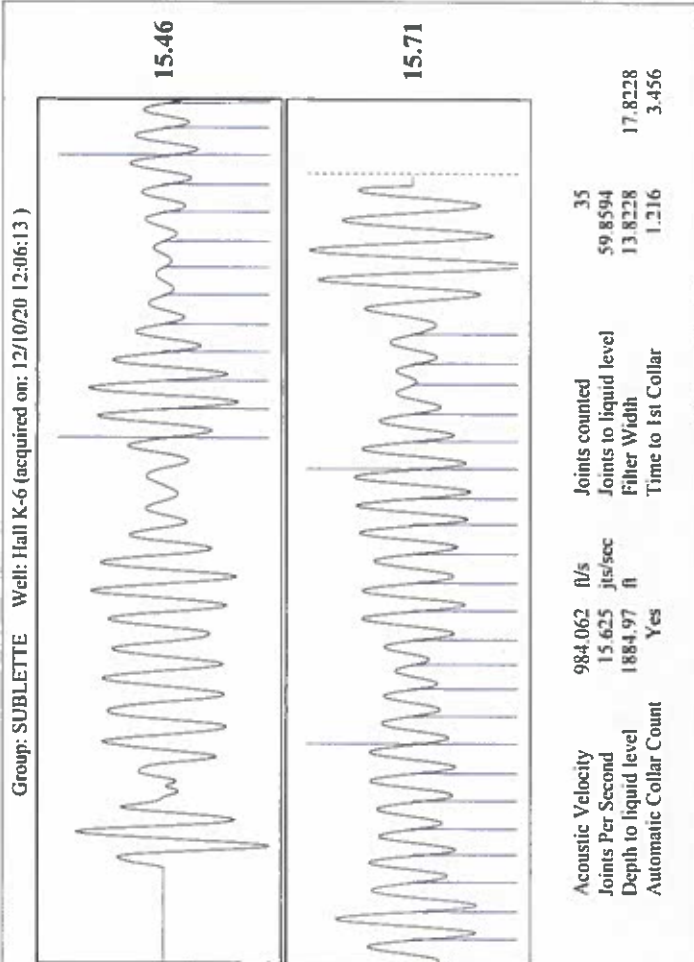
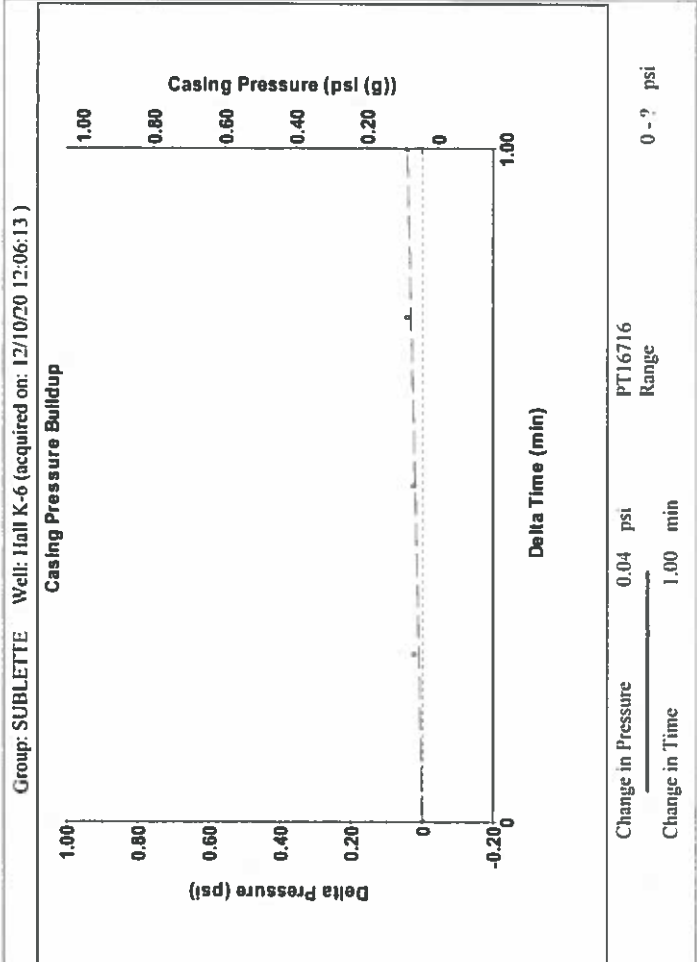
1.5 to 2.5 (Sec)

Analysis Method: Automatic

Group: SUBLETTE Well: Hall K-6 (acquired on: 12/10/20 12:06:13)

Production	Potential	Casing Pressure	0.0 psi (g)
Oil	-*- BBL/D	Casing Pressure Buildup	0.043 psi
Water	-*- BBL/D		1.00 min
Gas	-*- Mscf/D	Gas/Liquid Interface Pressure	1.0 psi (g)
IPR Method	Vogel	Liquid Level Depth	1884.97 ft
PBHP/SBHP	-*-	Pump Intake Depth	3033.00 ft
Production Efficiency	0.0	Formation Depth	2917.00 ft
Oil	40 deg-API		
Water	1.05 Sp.Gr.H2O		
Gas	0.99 Sp.Gr.AIR		
Acoustic Velocity	984.062 ft/s		
Formation Submergence			
Total Gaseous Liquid Column HT (TVD)	1148 ft		
Equivalent Gas Free Liquid HT (TVD)	1128 ft		
12/10/2020			

Producing	Annular	Gas Flow	1 Mscf/D
	% Liquid		98 %
Pump Intake	383.4	psi (g)	
Producing BHP	345.1	psi (g)	
Static BHP	-*-	psi (g)	



December 17, 2020

Katherine McClurkan
Merit Energy Company, LLC
13727 Noel Road, Suite 1200
Dallas, TX 75240

Re: Temporary Abandonment
API 15-081-20223-00-00
Hall K 6
NW/4 Sec.05-29S-34W
Haskell County, Kansas

Dear Katherine McClurkan:

"Your temporary abandonment (TA) application for the well listed above has been approved. In accordance with K.A.R. 82-3-111 the TA status of this well will expire 12/17/2021.

- * If you return this well to service or plug it, please notify the District Office.
- * If you sell this well you are required to file a Transfer of Operator form, T-1.
- * If the well will remain temporarily abandoned, you must submit a new TA application, CP-111, before 12/17/2021.

You may contact me at the number above if you have questions.

Very truly yours,

Michael Maier"