

KANSAS CORPORATION COMMISSION  
OIL & GAS CONSERVATION DIVISION

TEMPORARY ABANDONMENT WELL APPLICATION

All blanks must be complete

OPERATOR: License# \_\_\_\_\_  
 Name: \_\_\_\_\_  
 Address 1: \_\_\_\_\_  
 Address 2: \_\_\_\_\_  
 City: \_\_\_\_\_ State: \_\_\_\_\_ Zip: \_\_\_\_\_ + \_\_\_\_\_  
 Contact Person: \_\_\_\_\_  
 Phone: ( \_\_\_\_\_ ) \_\_\_\_\_  
 Contact Person Email: \_\_\_\_\_  
 Field Contact Person: \_\_\_\_\_  
 Field Contact Person Phone: ( \_\_\_\_\_ ) \_\_\_\_\_

API No. 15- \_\_\_\_\_  
 Spot Description: \_\_\_\_\_  
 \_\_\_\_\_ - \_\_\_\_\_ - \_\_\_\_\_ - \_\_\_\_\_ Sec. \_\_\_\_\_ Twp. \_\_\_\_\_ S. R. \_\_\_\_\_  E  W  
 \_\_\_\_\_ feet from  N /  S Line of Section  
 \_\_\_\_\_ feet from  E /  W Line of Section  
 GPS Location: Lat: \_\_\_\_\_, Long: \_\_\_\_\_  
(e.g. xx.xxxxx) (e.g. -xxx.xxxxx)  
 Datum:  NAD27  NAD83  WGS84  
 County: \_\_\_\_\_ Elevation: \_\_\_\_\_  GL  KB  
 Lease Name: \_\_\_\_\_ Well #: \_\_\_\_\_  
 Well Type: (check one)  Oil  Gas  OG  WSW  Other: \_\_\_\_\_  
 SWD Permit #: \_\_\_\_\_  ENHR Permit #: \_\_\_\_\_  
 Gas Storage Permit #: \_\_\_\_\_  
 Spud Date: \_\_\_\_\_ Date Shut-In: \_\_\_\_\_

|                  | Conductor | Surface | Production | Intermediate | Liner | Tubing |
|------------------|-----------|---------|------------|--------------|-------|--------|
| Size             |           |         |            |              |       |        |
| Setting Depth    |           |         |            |              |       |        |
| Amount of Cement |           |         |            |              |       |        |
| Top of Cement    |           |         |            |              |       |        |
| Bottom of Cement |           |         |            |              |       |        |

Casing Fluid Level from Surface: \_\_\_\_\_ How Determined? \_\_\_\_\_ Date: \_\_\_\_\_  
 Casing Squeeze(s): \_\_\_\_\_ to \_\_\_\_\_ w / \_\_\_\_\_ sacks of cement, \_\_\_\_\_ to \_\_\_\_\_ w / \_\_\_\_\_ sacks of cement. Date: \_\_\_\_\_  
(top) (bottom) (top) (bottom)  
 Do you have a valid Oil & Gas Lease?  Yes  No  
 Depth and Type:  Junk in Hole at \_\_\_\_\_  Tools in Hole at \_\_\_\_\_ Casing Leaks:  Yes  No Depth of casing leak(s): \_\_\_\_\_  
(depth) (depth)  
 Type Completion:  ALT. I  ALT. II Depth of:  DV Tool: \_\_\_\_\_ w / \_\_\_\_\_ sacks of cement  Port Collar: \_\_\_\_\_ w / \_\_\_\_\_ sack of cement  
(depth) (depth)  
 Packer Type: \_\_\_\_\_ Size: \_\_\_\_\_ Inch Set at: \_\_\_\_\_ Feet  
 Total Depth: \_\_\_\_\_ Plug Back Depth: \_\_\_\_\_ Plug Back Method: \_\_\_\_\_

**Geological Data:**

| Formation Name | Formation Top | Formation Base | Completion Information   |
|----------------|---------------|----------------|--|
| 1. _____       | At: _____     | to _____ Feet  | Perforation Interval _____ to _____ Feet or Open Hole Interval _____ to _____ Feet |
| 2. _____       | At: _____     | to _____ Feet  | Perforation Interval _____ to _____ Feet or Open Hole Interval _____ to _____ Feet |

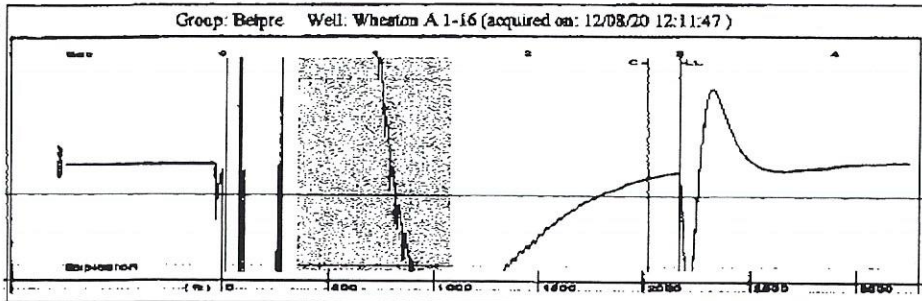
UNDER PENALTY OF PERJURY I HEREBY ATTEST THAT THE INFORMATION CONTAINED HEREIN IS TRUE AND CORRECT TO THE BEST OF MY KNOWLEDGE

Submitted Electronically

|   |  |                |                     |                      |                                 |
|---|--|----------------|---------------------|----------------------|---------------------------------|
| <b>Do NOT Write in This Space - KCC USE ONLY</b>                                      | Date Tested: _____                         | Results: _____ | Date Plugged: _____ | Date Repaired: _____ | Date Put Back in Service: _____ |
|   | Review Completed by: _____ Comments: _____ |                |                     |                      |                                 |
| TA Approved: <input type="checkbox"/> Yes <input type="checkbox"/> Denied Date: _____ |  |                |                     |                      |                                 |

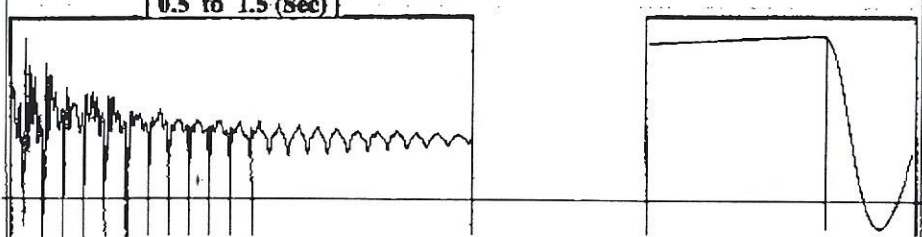
Mail to the Appropriate KCC Conservation Office:

|  |  |                    |
|--|--|--------------------|
|  | KCC District Office #1 - 210 E. Frontview, Suite A, Dodge City, KS 67801               | Phone 620.682.7933 |
|  | KCC District Office #2 - 3450 N. Rock Road, Building 600, Suite 601, Wichita, KS 67226 | Phone 316.337.7400 |
|  | KCC District Office #3 - 137 E. 21st St., Chanute, KS 66720                            | Phone 620.902.6450 |
|  | KCC District Office #4 - 2301 E. 13th Street, Hays, KS 67601-2651                      | Phone 785.261.6250 |

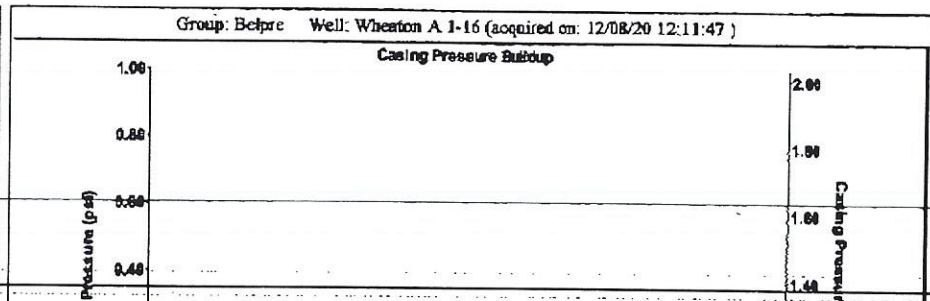


Group: Belpre Well: Wheaton A 1-16 (acquired on: 12/08/20 12:11:47)

|                          |             |                        |         |        |             |
|--------------------------|-------------|------------------------|---------|--------|-------------|
| Filter Type              | High Pass   | Automatic Collar Count | Yes     | Time   | 3 sec       |
| Manual Acoustic Velocity | 402.65 ft/s | Manual JTS/sec         | 22.1239 | Joints | 68.3962 Jts |
|                          |             |                        |         | Depth  | 2168.16 ft  |



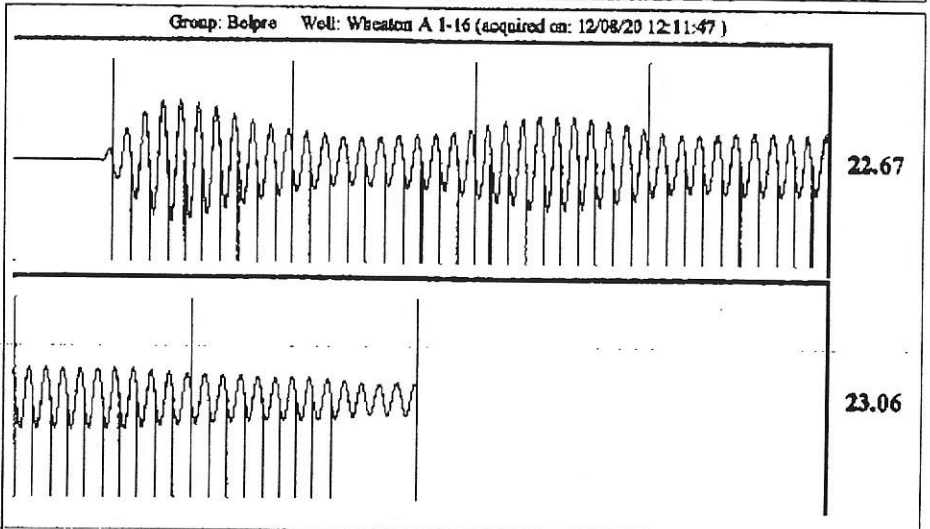
Analysis Method: Automatic



|                    |          |           |
|--------------------|----------|-----------|
| Change in Pressure | 0.01 psi | PT13440   |
| Change in Time     | 0.25 min | Range     |
|                    |          | 0 - 7 psi |

Group: Belpre Well: Wheaton A 1-16 (acquired on: 12/08/20 12:11:47)

|                                       |                  |                               |                  |
|---------------------------------------|------------------|-------------------------------|------------------|
| <b>Production</b>                     | <b>Potential</b> | <b>Casing Pressure</b>        | <b>Producing</b> |
| Current                               |                  | 1.0 psi (g)                   |                  |
| Oil -.-                               | -.- BBL/D        | Casing Pressure Buildup       | Annular Gas Flow |
| Water -.-                             | -.- BBL/D        | 0.008 psi                     | 0 Mscf/D         |
| Gas -.-                               | -.- Mscf/D       | 0.25 min                      | % Liquid         |
|                                       |                  | Gas/Liquid Interface Pressure | 99 %             |
|                                       |                  | 1.7 psi (g)                   |                  |
| <b>IPR Method</b>                     | <b>Vogel</b>     | <b>Liquid Level Depth</b>     |                  |
| PBHP/SBHP                             | -.-              | 2168.16 ft                    |                  |
| Production Efficiency                 | 0.0              | <b>Pump Intake Depth</b>      |                  |
|                                       |                  | 4336.00 ft                    |                  |
| <b>Oil</b> 40 deg API                 |                  | <b>Formation Depth</b>        |                  |
| <b>Water</b> 1.05 Sp.Gr.H2O           |                  | 4333.00 ft                    |                  |
| <b>Gas</b> 0.58 Sp.Gr.AIR             |                  |                               |                  |
| <b>Acoustic Velocity</b> 1445.44 ft/s |                  |                               |                  |
|                                       |                  | <b>Pump Intake</b>            |                  |
|                                       |                  | 715.3 psi (g)                 |                  |
|                                       |                  | <b>Producing BHP</b>          |                  |
|                                       |                  | 714.4 psi (g)                 |                  |
|                                       |                  | <b>Static BHP</b>             |                  |
|                                       |                  | -.- psi (g)                   |                  |
| <b>Formation Submergence</b>          |                  |                               |                  |
| Total Gaseous Liquid Column HT (TVD)  | 2168 ft          |                               |                  |
| Equivalent Gas Free Liquid HT (TVD)   | 2151 ft          |                               |                  |
| <b>Acoustic Test</b>                  |                  |                               |                  |



|                        |                 |                        |         |
|------------------------|-----------------|------------------------|---------|
| Acoustic Velocity      | 1445.44 ft/s    | Joints counted         | 58      |
| Joints Per Second      | 22.7987 Jts/sec | Joints to liquid level | 68.3962 |
| Depth to liquid level  | 2168.16 ft      | Filter Width           | 20.1239 |
| Automatic Collar Count | Yes             | Time to 1st Collar     | 0.248   |
|                        |                 |                        | 24.1239 |
|                        |                 |                        | 2.792   |

December 17, 2020

Loveness Mpanje  
F. G. Holl Company L.L.C.  
9431 E CENTRAL STE 100  
WICHITA, KS 67206-2563

Re: Temporary Abandonment  
API 15-047-21556-00-00  
WHEATON TRUST A 1-16  
SW/4 Sec.16-24S-18W  
Edwards County, Kansas

Dear Loveness Mpanje:

"Your temporary abandonment (TA) application for the well listed above has been approved. In accordance with K.A.R. 82-3-111 the TA status of this well will expire 12/17/2021.

- \* If you return this well to service or plug it, please notify the District Office.
- \* If you sell this well you are required to file a Transfer of Operator form, T-1.
- \* If the well will remain temporarily abandoned, you must submit a new TA application, CP-111, before 12/17/2021.

You may contact me at the number above if you have questions.

Very truly yours,

Michael Maier"