

KEVIN L. KESSLER

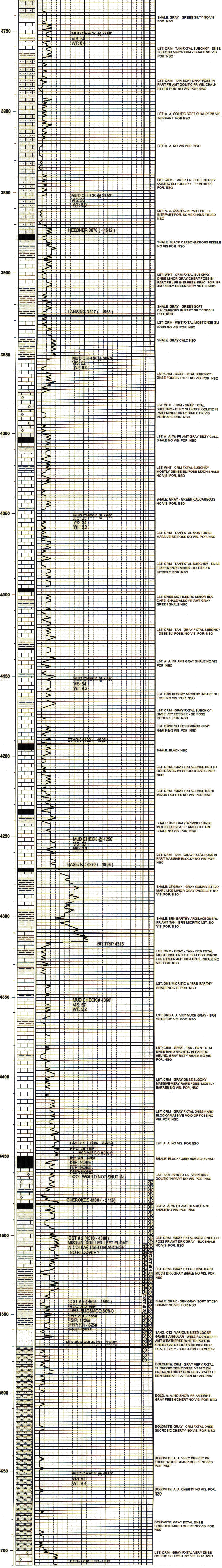
CONSULTING PETROLEUM GEOLOGIST

(316) 522 - 7338

OPERATOR : RAYMOND OIL COMPANY INC.		ELEVATION
LEASE : GIBBS	WELL # : 1	KB: 2364'
LOCATION : 495' FNL & 641' FWL		GL: 2353'
SEC : 15	TWP : 21 S	MEASUREMENTS FROM:
RGE : 23 W	STATE : KANSAS	KB
CONTRACTOR: H 2 DRILLING RIG #4		CASING RECORD:
COMM: 09 - 24 - 2018	COMP: 10 - 05 - 2018	SURFACE:
RTD: 4710'	LTD: 4712'	8 5/8" @ 262'
GEOLOGICAL SUPERVISION FROM: 3600'		PRODUCTION:
SAMPLES SAVED FROM: 3600'		5 1/2" @ 4710'
TO: RTD		
TO: RTD		

FORMATION:	TOP	LOG DATUM	SAMPLE TOP	DATUM	COMP.
HEEBNER	3876	- 1512	3876	- 1512	+ 06
LANSING	3927	- 1563	3927	- 1563	+ 09
STARK	4192	- 1828	4192	- 1828	+ 10
BASE/KC	4270	- 1906	4270	- 1906	+ 08
CHEROKEE	4480	- 2116	4480	- 2116	+ 11
MISSISSIPPI	4570	- 2206	4570	- 2206	+ 51

REFERENCE WELL FOR STRUCTURAL COMPARISON:
NORSTAR PET. # 1-16 MALCOLM 16-21S-23W HODG. CO. KS



COMMENTS :

5 1/2" PRODUCTION CASING WAS SET TO FURTHER EVALUTE THE PRODUCTIVITY OF THIS WELL

KEVIN L. KESSLER