

KANSAS CORPORATION COMMISSION
OIL & GAS CONSERVATION DIVISION

TEMPORARY ABANDONMENT WELL APPLICATION

OPERATOR: License#
Name:
Address 1:
Address 2:
City: State: Zip:
Contact Person:
Phone:
Contact Person Email:
Field Contact Person:
Field Contact Person Phone:

API No. 15-
Spot Description:
Sec. Twp. S. R.
GPS Location: Lat: Long:
Datum: NAD27 NAD83 WGS84
County: Elevation:
Lease Name: Well #:
Well Type: Oil Gas OG WSW Other:
SWD Permit #: ENHR Permit #:
Gas Storage Permit #:
Spud Date: Date Shut-In:

Table with 7 columns: Conductor, Surface, Production, Intermediate, Liner, Tubing. Rows include Size, Setting Depth, Amount of Cement, Top of Cement, Bottom of Cement.

Casing Fluid Level from Surface: How Determined? Date:
Casing Squeeze(s): to w / sacks of cement, to w / sacks of cement. Date:
Do you have a valid Oil & Gas Lease? Yes No
Depth and Type: Junk in Hole at Tools in Hole at Casing Leaks: Yes No Depth of casing leak(s):
Type Completion: ALT. I ALT. II Depth of: DV Tool: w / sacks of cement Port Collar: w / sack of cement
Packer Type: Size: Inch Set at: Feet
Total Depth: Plug Back Depth: Plug Back Method:

Geological Data:

Table with 4 columns: Formation Name, Formation Top, Formation Base, Completion Information. Rows 1 and 2.

UNDER PENALTY OF PERJURY I HEREBY ATTEST THAT THE INFORMATION CONTAINED HEREIN IS TRUE AND CORRECT TO THE BEST OF MY KNOWLEDGE

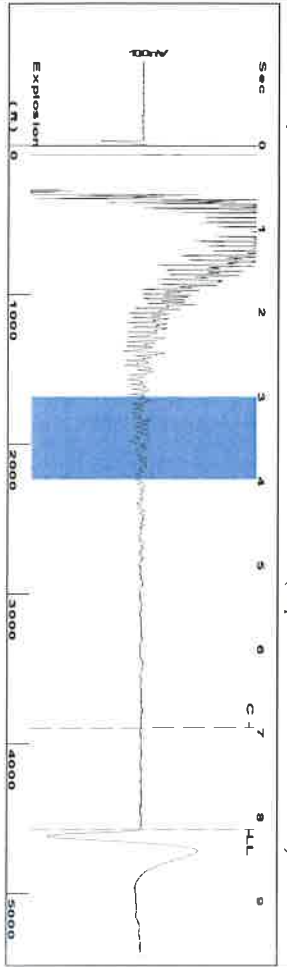
Submitted Electronically

Do NOT Write in This Space - KCC USE ONLY
Date Tested: Results: Date Plugged: Date Repaired: Date Put Back in Service:
Review Completed by: Comments:
TA Approved: Yes Denied Date:

Mail to the Appropriate KCC Conservation Office:

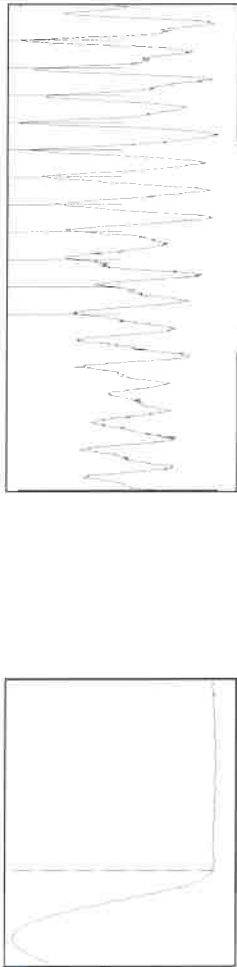
Table with 2 columns: Office Address, Phone. Rows for District Office #1, #2, #3, #4.

Group: EDISON OPERATING Well: CONRARDY B 4-1 (acquired on: 12/10/20 15:41:21)



Filter Type High Pass Automatic Collar Count Yes
 Manual Acoustic Velo 1124.11 f/s Manual JTS/sec 17.7305
 Time 8.14 sec
 Joints 144.309 Jts
 Depth 4574.59 ft

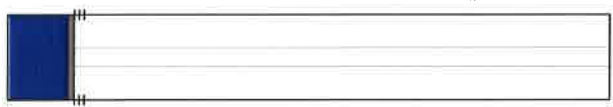
3.0 to 4.0 (Sec) |



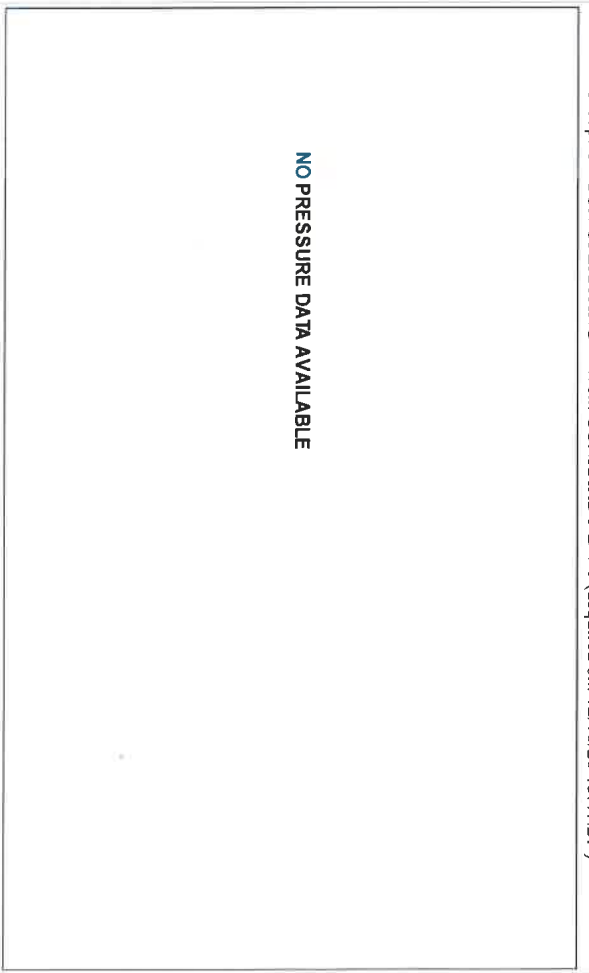
Analysis Method: Automatic

Group: EDISON OPERATING Well: CONRARDY B 4-1 (acquired on: 12/10/20 15:41:21)

Production	Current	Potential	Casing Pressure	Static
Oil	-*-	BBL/D	29.4 psi (g)	Oil Column Height
Water	-*-	BBL/D	Casing Pressure Buildup	MD 0 ft
Gas	-*-	Mscf/D	-0.1 psi	Water Column Height
IPR Method		Vogel	Gas/Liquid Interface Pressure	MD -*- ft
PBHP/SBHP		-*-	35.7 psi (g)	Static BHP
Production Efficiency		0.0		35.5 psi (g)
Oil	40 deg API	Liquid Level Depth		
Water	1.05 Sp Gr H2O	4574.59 ft		
Gas	0.87 Sp Gr AIR	Pump Intake Depth		
Acoustic Velocity	1123.98 f/s	4510.00 ft		
		Formation Depth		
		4464.00 ft		

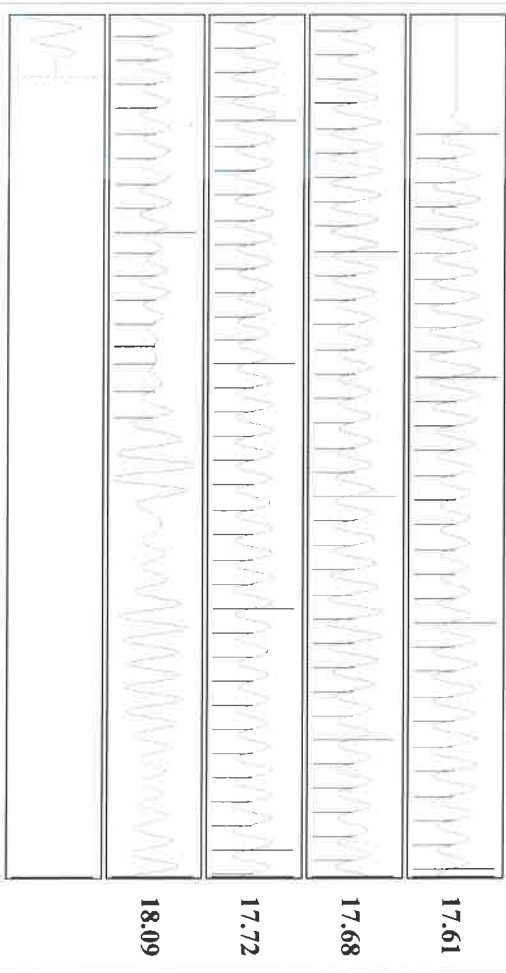


Group: EDISON OPERATING Well: CONRARDY B 4-1 (acquired on: 12/10/20 15:41:21)



Change in Pressure 0.00 psi PTT14020
 Change in Time 0.00 min Range 0 - ? psi

Group: EDISON OPERATING Well: CONRARDY B 4-1 (acquired on: 12/10/20 15:41:21)



Acoustic Velocity	Joints Per Second	Depth to liquid level	Automatic Collar Count	Joints counted	Filter Width	Time to 1st Collar
1123.98 f/s	17.7284 Jts/sec	4574.59 ft	Yes	144.309	15.7305	19.7305
				118	0.276	6.932

January 14, 2021

Brian J McCoy
Edison Operating Company LLC
8100 E. 22ND ST. N., BLDG 1900
WICHITA, KS 67226

Re: Temporary Abandonment
API 15-077-00851-00-00
CONRARDY B 4-1
NE/4 Sec.01-31S-09W
Harper County, Kansas

Dear Brian J McCoy:

"Your temporary abandonment (TA) application for the well listed above has been approved. In accordance with K.A.R. 82-3-111 the TA status of this well will expire 01/14/2022.

- * If you return this well to service or plug it, please notify the District Office.
- * If you sell this well you are required to file a Transfer of Operator form, T-1.
- * If the well will remain temporarily abandoned, you must submit a new TA application, CP-111, before 01/14/2022.

You may contact me at the number above if you have questions.

Very truly yours,

Steve VanGieson"