

KANSAS CORPORATION COMMISSION
OIL & GAS CONSERVATION DIVISION

TEMPORARY ABANDONMENT WELL APPLICATION

OPERATOR: License#
Name:
Address 1:
Address 2:
City: State: Zip:
Contact Person:
Phone:
Contact Person Email:
Field Contact Person:
Field Contact Person Phone:

API No. 15-
Spot Description:
Sec. Twp. S. R.
GPS Location: Lat: Long:
Datum: NAD27 NAD83 WGS84
County: Elevation:
Lease Name: Well #:
Well Type: Oil Gas OG WSW Other:
SWD Permit #: ENHR Permit #:
Gas Storage Permit #:
Spud Date: Date Shut-In:

Table with 7 columns: Conductor, Surface, Production, Intermediate, Liner, Tubing. Rows include Size, Setting Depth, Amount of Cement, Top of Cement, Bottom of Cement.

Casing Fluid Level from Surface: How Determined? Date:
Casing Squeeze(s): to w / sacks of cement, to w / sacks of cement. Date:
Do you have a valid Oil & Gas Lease? Yes No
Depth and Type: Junk in Hole at Tools in Hole at Casing Leaks: Yes No Depth of casing leak(s):
Type Completion: ALT. I ALT. II Depth of: DV Tool: w / sacks of cement Port Collar: w / sack of cement
Packer Type: Size: Inch Set at: Feet
Total Depth: Plug Back Depth: Plug Back Method:

Geological Date:

Table with 4 columns: Formation Name, Formation Top, Formation Base, Completion Information. Rows 1 and 2.

UNDER PENALTY OF PERJURY I HEREBY ATTEST THAT THE INFORMATION CONTAINED HEREIN IS TRUE AND CORRECT TO THE BEST OF MY KNOWLEDGE

Submitted Electronically

Do NOT Write in This Space - KCC USE ONLY
Date Tested: Results: Date Plugged: Date Repaired: Date Put Back in Service:
Review Completed by: Comments:
TA Approved: Yes Denied Date:

Mail to the Appropriate KCC Conservation Office:

Table with 2 columns: Office Address, Phone. Rows for KCC District Office #1, #2, #3, #4.

### General

Well ID 126609  
 Well Evans 3406 1-18H  
 Company Sandridge  
 Operator - \* -  
 Lease Name Evans 3406 1-18H  
 Elevation 1345.00 ft  
 Production Method Other  
 Dataset Description  
 Evans 3406 1-18 Shot 1

Comment

### Surface Unit

Manufacturer - \* -  
 Unit Class Conventional  
 Unit API Number - \* -  
 Measured Stroke Length 100.000 in  
 Rotation CW  
 Counter Balance Effect (Weights Level) - \* - Klb  
 Weight Of Counter Weights 2000 lb

### Prime Mover

Motor Type Electric  
 Rated HP - \* - HP  
 Run Time 24 hr/day  
 MFG/Comment - \* -

### Electric Motor Parameters

Rated Full Load AMPS - \* -  
 Rated Full Load RPM - \* -  
 Synchronous RPM 1200  
 Voltage - \* -  
 Hertz 60  
 Phase 3  
 Power Consumption 5  
 Power Demand 8 \$/KW

### Tubulars

Tubing OD 2.875 in  
 Casing OD 7.000 in  
 Average Joint Length 31.700 ft  
 Anchor Depth - \* - ft  
 Kelly Bushing 20.00 ft

### Pump

Plunger Diameter - \* - in  
 Pump Intake Depth 5350.00 ft  
 \*\*Total Rod Length < Pump Depth

### Polished Rod

Polished Rod Diameter - \* - in

### Rod String

	Top Taper	Taper 2	Taper 3	Taper 4	Taper 5	Taper 6
Rod Type	- * -	- * -	- * -	- * -	- * -	- * -
Rod Length	- * -	- * -	- * -	- * -	- * -	- * - ft
Rod Diameter	- * -	- * -	- * -	- * -	- * -	- * - in
Rod Weight	0.0	0.0	0.0	0.0	0.0	0.0 lb

Total Rod Length 0  
 Total Rod Weight 0.00

Damp Up 0.05175  
 Damp Down 0.05175

### Conditions

#### Pressure

Static BHP 658.6 psi (g)  
 Static BHP Method Acoustic  
 Static BHP Date 01/03/2021

Producing BHP - \* - psi (g)  
 Producing BHP Method - \* -  
 Producing BHP Date - \* -  
 Formation Depth 5487.00 ft

#### Surface Producing Pressures

Tubing Pressure - \* - psi (g)  
 Casing Pressure 340.5 psi (g)

#### Casing Pressure Buildup

Change in Pressure 0.5 psi  
 Over Change in Time 1.00 min

#### Production

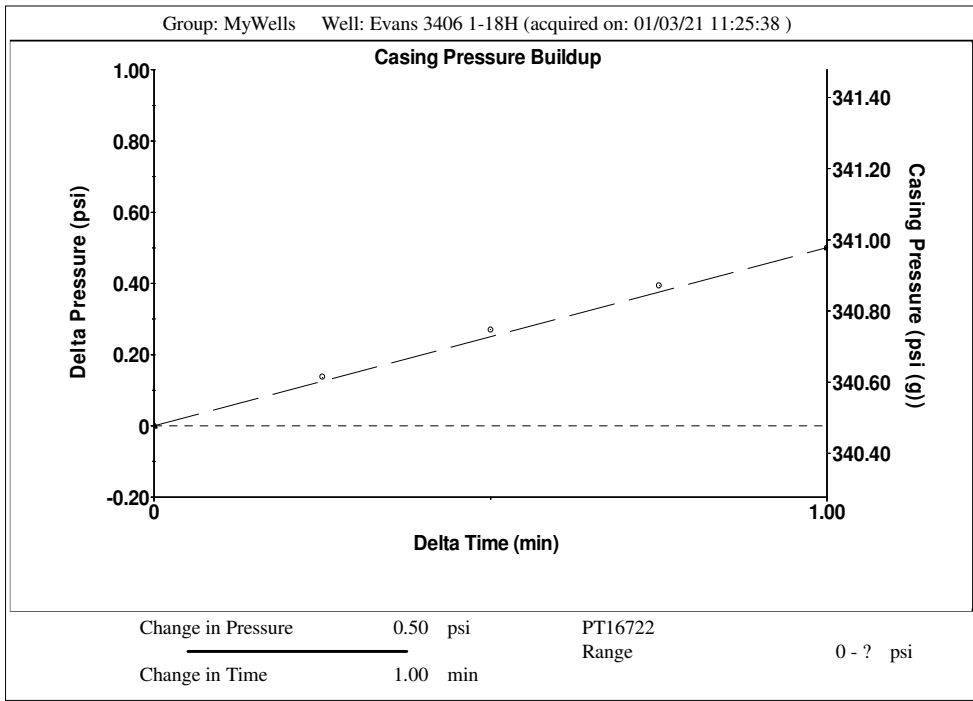
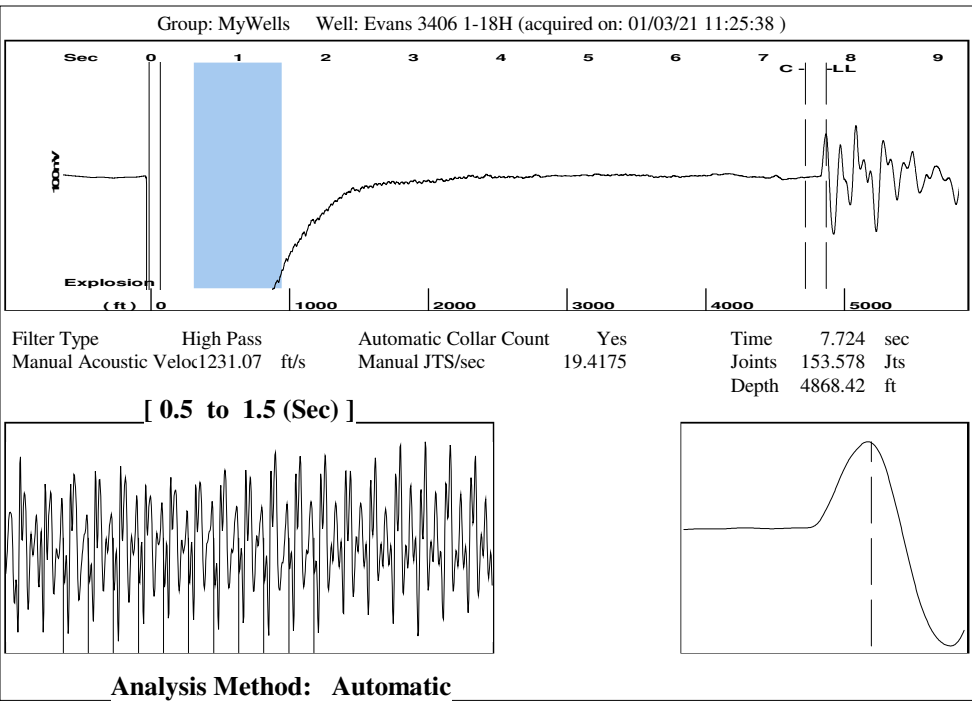
Oil Production 0 BBL/D  
 Water Production 1 BBL/D  
 Gas Production - \* - Mscf/D  
 Production Date 12/10/2019

#### Temperatures

Surface Temperature 70 deg F  
 Bottomhole Temperature 150 deg F

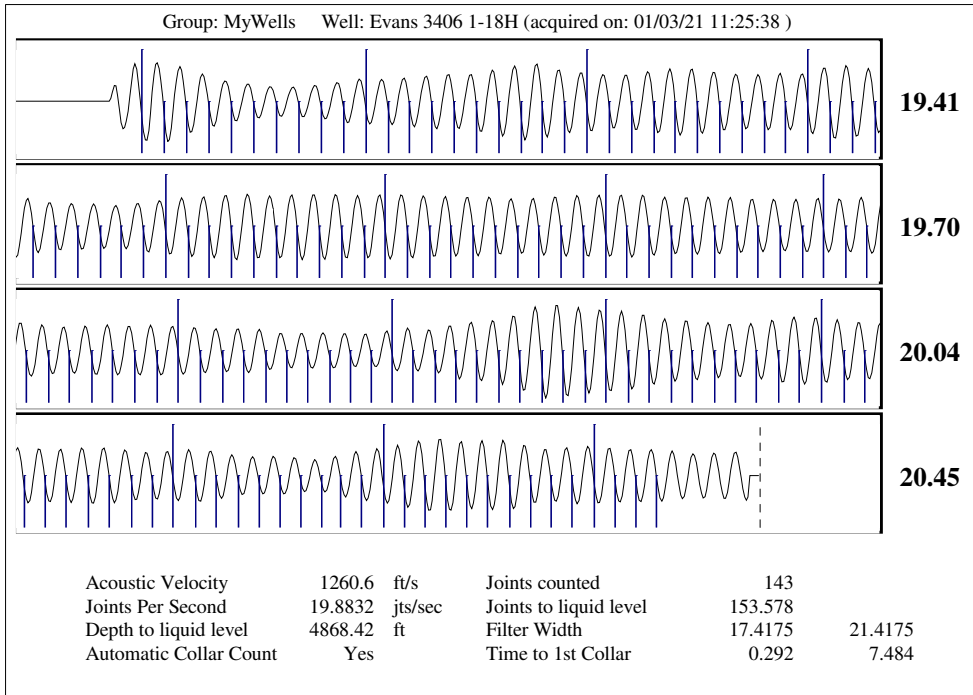
#### Fluid Properties

Oil API 40 deg.API  
 Water Specific Gravity 1.05 Sp.Gr.H2O



Group: MyWells Well: Evans 3406 1-18H (acquired on: 01/03/21 11:25:38)

<b>Production</b>	<b>Potential</b>	<b>Casing Pressure</b>	
Current	- * - BBL/D	340.5 psi (g)	
Oil 0	- * - BBL/D	Casing Pressure Buildup	
Water 1	- * - Mscf/D	0.5 psi	
Gas - * -		1.00 min	
<b>IPR Method</b>	<b>Vogel</b>	<b>Gas/Liquid Interface Pressure</b>	
PBHP/SBHP	- * -	386.5 psi (g)	
Production Efficiency	0.0	<b>Liquid Level Depth</b>	
		4868.42 ft	
Oil 40 deg.API		<b>Tubing Intake Depth</b>	
Water 1.05 Sp.Gr.H2O		5350.00 ft	
Gas 0.70 Sp.Gr.AIR		<b>Formation Depth</b>	
		5487.00 ft	
<b>Acoustic Velocity</b>	1260.6 ft/s		
<b>Acoustic Test</b>			



January 14, 2021

Collette Davis  
SandRidge Exploration and Production LLC  
123 ROBERT S. KERR AVE  
OKLAHOMA CITY, OK 73102-6406

Re: Temporary Abandonment  
API 15-077-22029-01-00  
EVANS 3406 1-18H  
NW/4 Sec.19-34S-06W  
Harper County, Kansas

Dear Collette Davis:

"Your temporary abandonment (TA) application for the well listed above has been approved. In accordance with K.A.R. 82-3-111 the TA status of this well will expire 01/14/2022.

- \* If you return this well to service or plug it, please notify the District Office.
- \* If you sell this well you are required to file a Transfer of Operator form, T-1.
- \* If the well will remain temporarily abandoned, you must submit a new TA application, CP-111, before 01/14/2022.

You may contact me at the number above if you have questions.

Very truly yours,

Steve VanGieson"