

KANSAS CORPORATION COMMISSION
OIL & GAS CONSERVATION DIVISION

TEMPORARY ABANDONMENT WELL APPLICATION

OPERATOR: License# _____
 Name: _____
 Address 1: _____
 Address 2: _____
 City: _____ State: _____ Zip: _____ + _____
 Contact Person: _____
 Phone: (_____) _____
 Contact Person Email: _____
 Field Contact Person: _____
 Field Contact Person Phone: (_____) _____

API No. 15- _____
 Spot Description: _____
 _____ - _____ - _____ - _____ Sec. _____ Twp. _____ S. R. _____ E W
 _____ feet from N / S Line of Section
 _____ feet from E / W Line of Section
 GPS Location: Lat: _____, Long: _____
(e.g. xx.xxxxx) (e.g. -xxx.xxxxx)
 Datum: NAD27 NAD83 WGS84
 County: _____ Elevation: _____ GL KB
 Lease Name: _____ Well #: _____
 Well Type: (check one) Oil Gas OG WSW Other: _____
 SWD Permit #: _____ ENHR Permit #: _____
 Gas Storage Permit #: _____
 Spud Date: _____ Date Shut-In: _____

| | Conductor | Surface | Production | Intermediate | Liner | Tubing |
|------------------|-----------|---------|------------|--------------|-------|--------|
| Size | | | | | | |
| Setting Depth | | | | | | |
| Amount of Cement | | | | | | |
| Top of Cement | | | | | | |
| Bottom of Cement | | | | | | |

Casing Fluid Level from Surface: _____ How Determined? _____ Date: _____
 Casing Squeeze(s): _____ to _____ w / _____ sacks of cement, _____ to _____ w / _____ sacks of cement. Date: _____
(top) (bottom) (top) (bottom)
 Do you have a valid Oil & Gas Lease? Yes No
 Depth and Type: Junk in Hole at _____ Tools in Hole at _____ Casing Leaks: Yes No Depth of casing leak(s): _____
(depth) (depth)
 Type Completion: ALT. I ALT. II Depth of: DV Tool: _____ w / _____ sacks of cement Port Collar: _____ w / _____ sack of cement
(depth) (depth)
 Packer Type: _____ Size: _____ Inch Set at: _____ Feet
 Total Depth: _____ Plug Back Depth: _____ Plug Back Method: _____

Geological Data:

| Formation Name | Formation Top | Formation Base | Completion Information |
|----------------|---------------|----------------|--|
| 1. _____ | At: _____ | to _____ Feet | Perforation Interval _____ to _____ Feet or Open Hole Interval _____ to _____ Feet |
| 2. _____ | At: _____ | to _____ Feet | Perforation Interval _____ to _____ Feet or Open Hole Interval _____ to _____ Feet |

UNDER PENALTY OF PERJURY I HEREBY ATTEST THAT THE INFORMATION CONTAINED HEREIN IS TRUE AND CORRECT TO THE BEST OF MY KNOWLEDGE

Submitted Electronically

| | | | | | |
|---|--|----------------|---------------------|----------------------|---------------------------------|
| Do NOT Write in This Space - KCC USE ONLY | Date Tested: _____ | Results: _____ | Date Plugged: _____ | Date Repaired: _____ | Date Put Back in Service: _____ |
| | Review Completed by: _____ Comments: _____ | | | | |
| TA Approved: <input type="checkbox"/> Yes <input type="checkbox"/> Denied Date: _____ | | | | | |

Mail to the Appropriate KCC Conservation Office:

| | | |
|--|--|--------------------|
|  | KCC District Office #1 - 210 E. Frontview, Suite A, Dodge City, KS 67801 | Phone 620.682.7933 |
| | KCC District Office #2 - 3450 N. Rock Road, Building 600, Suite 601, Wichita, KS 67226 | Phone 316.337.7400 |
| | KCC District Office #3 - 137 E. 21st St., Chanute, KS 66720 | Phone 620.902.6450 |
| | KCC District Office #4 - 2301 E. 13th Street, Hays, KS 67601-2651 | Phone 785.261.6250 |

General

Well ID 124675
 Well Mohr 3406 1-21H
 Company Sandridge
 Operator - * -
 Lease Name Mohr 3406 1-21H
 Elevation 1320.00 ft
 Production Method Other
 Dataset Description
 Mohr 3406 1-21H Shot 1

Comment

Surface Unit

Manufacturer - * -
 Unit Class Conventional
 Unit API Number - * -
 Measured Stroke Length - * - in
 Rotation CW
 Counter Balance Effect (Weights Level) - * - Klb
 Weight Of Counter Weights 2000 lb

Prime Mover

Motor Type Electric
 Rated HP - * - HP
 Run Time 24 hr/day
 MFG/Comment - * -

Electric Motor Parameters

Rated Full Load AMPS - * -
 Rated Full Load RPM - * -
 Synchronous RPM 1200
 Voltage - * -
 Hertz 60
 Phase 3
 Power Consumption 5
 Power Demand 8 \$/KW

Tubulars

Tubing OD 2.875 in
 Casing OD 7.000 in
 Average Joint Length 31.700 ft
 Anchor Depth - * - ft
 Kelly Bushing 23.00 ft

Pump

Plunger Diameter - * - in
 Pump Intake Depth 5740.00 ft
 **Total Rod Length < Pump Depth

Polished Rod

Polished Rod Diameter - * - in

Rod String

| | Top Taper | Taper 2 | Taper 3 | Taper 4 | Taper 5 | Taper 6 |
|--------------|-----------|---------|---------|---------|---------|----------|
| Rod Type | - * - | - * - | - * - | - * - | - * - | - * - |
| Rod Length | - * - | - * - | - * - | - * - | - * - | - * - ft |
| Rod Diameter | - * - | - * - | - * - | - * - | - * - | - * - in |
| Rod Weight | 0.0 | 0.0 | 0.0 | 0.0 | 0.0 | 0.0 lb |

Total Rod Length 0
 Total Rod Weight 0.00

Damp Up 0.0537
 Damp Down 0.0537

Conditions

Pressure

Static BHP 1213.2 psi (g)
 Static BHP Method Acoustic
 Static BHP Date 01/03/2021

Producing BHP - * - psi (g)
 Producing BHP Method - * -
 Producing BHP Date - * -
 Formation Depth 5755.00 ft

Surface Producing Pressures

Tubing Pressure - * - psi (g)
 Casing Pressure 176.3 psi (g)

Casing Pressure Buildup

Change in Pressure -20.940 psi
 Over Change in Time 1.00 min

Production

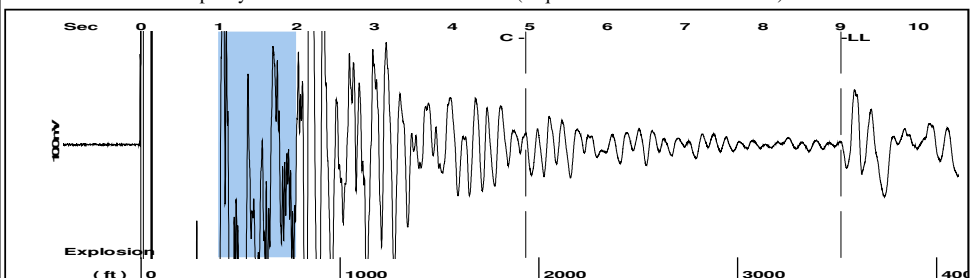
Oil Production 0 BBL/D
 Water Production 1 BBL/D
 Gas Production - * - Mscf/D
 Production Date 12/10/2019

Temperatures

Surface Temperature 70 deg F
 Bottomhole Temperature 150 deg F

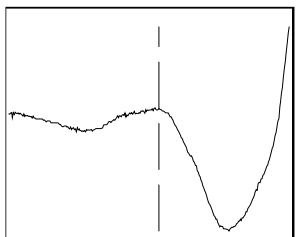
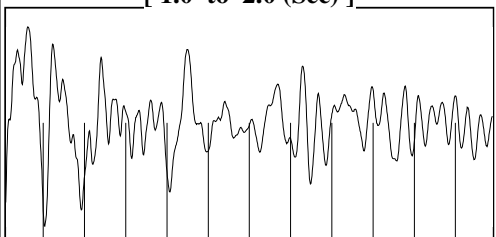
Fluid Properties

Oil API 40 deg.API
 Water Specific Gravity 1.05 Sp.Gr.H2O

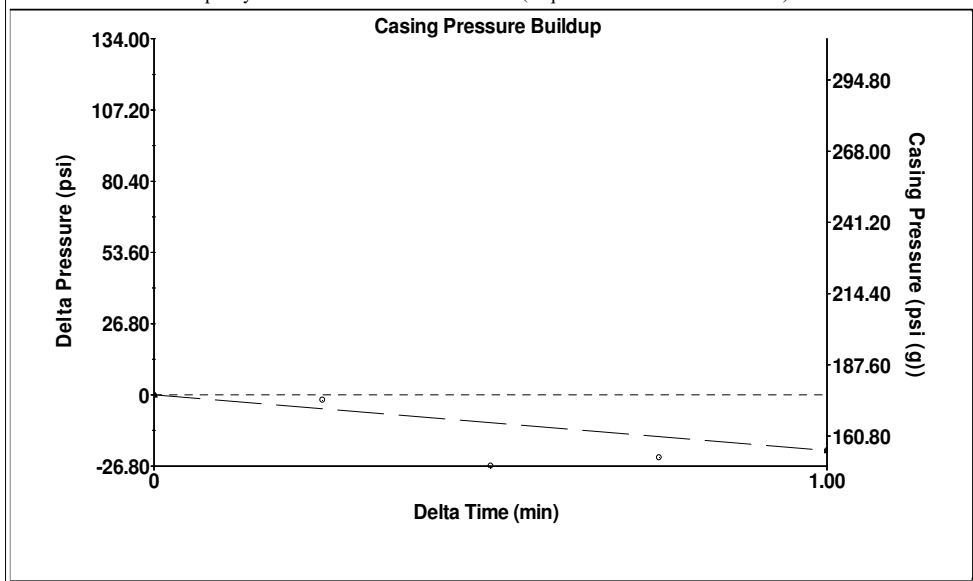


Filter Type High Pass Automatic Collar Count Yes Time 9.007 sec
 Manual Acoustic Veloc 748.524 ft/s Manual JTS/sec 11.8064 Joints 111.029 Jts
 Depth 3519.63 ft

[1.0 to 2.0 (Sec)]



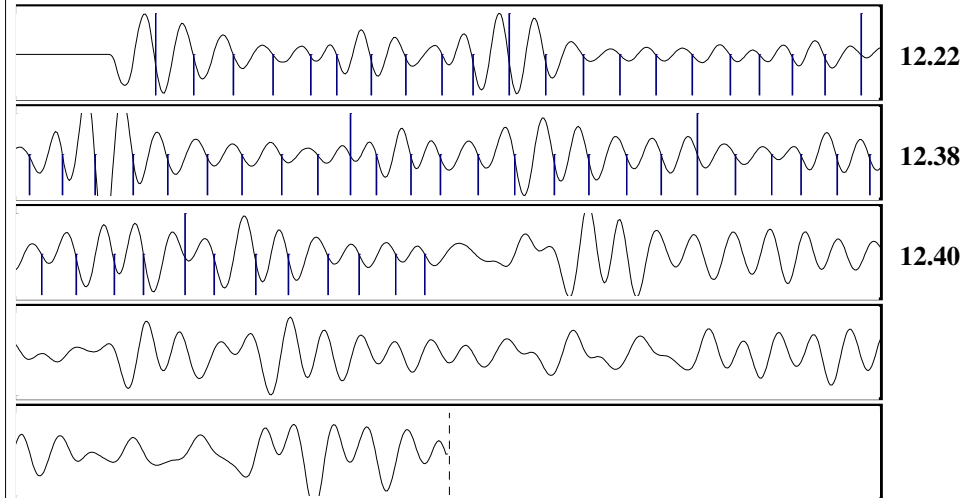
Analysis Method: Automatic



Change in Pressure -20.94 psi PT16722
 Change in Time 1.00 min Range 0 - ? psi

| | | | |
|-----------------------|--------------|-------------------------------|---------------------|
| Production Current | Potential | Casing Pressure | Static |
| Oil 0 | - * - BBL/D | 176.3 psi (g) | |
| Water 1 | - * - BBL/D | Casing Pressure Buildup | Oil Column Height |
| Gas - * - | - * - Mscf/D | -20.940 psi | MD 0 ft |
| | | 1.00 min | |
| IPR Method | Vogel | Gas/Liquid Interface Pressure | Water Column Height |
| PBHP/SBHP | - * - | 207.3 psi (g) | MD 2212 ft |
| Production Efficiency | 0.0 | | |
| Oil 40 deg.API | | Liquid Level Depth | |
| Water 1.05 Sp.Gr.H2O | | 3519.63 ft | |
| Gas 1.13 Sp.Gr.AIR | | Tubing Intake Depth | |
| | | 5740.00 ft | |
| Acoustic Velocity | 781.531 ft/s | Formation Depth | |
| | | 5755.00 ft | |
| | | Static BHP | |
| | | 1213.2 psi (g) | |

Acoustic Test



Acoustic Velocity 781.531 ft/s Joints counted 57
 Joints Per Second 12.327 jts/sec Joints to liquid level 111.029
 Depth to liquid level 3519.63 ft Filter Width 9.80638 13.8064
 Automatic Collar Count Yes Time to 1st Collar 0.324 4.948

January 14, 2021

Collette Davis
SandRidge Exploration and Production LLC
123 ROBERT S. KERR AVE
OKLAHOMA CITY, OK 73102-6406

Re: Temporary Abandonment
API 15-077-22013-01-00
MOHR 3406 1-21H
NW/4 Sec.27-34S-06W
Harper County, Kansas

Dear Collette Davis:

"Your temporary abandonment (TA) application for the well listed above has been approved. In accordance with K.A.R. 82-3-111 the TA status of this well will expire 01/14/2022.

- * If you return this well to service or plug it, please notify the District Office.
- * If you sell this well you are required to file a Transfer of Operator form, T-1.
- * If the well will remain temporarily abandoned, you must submit a new TA application, CP-111, before 01/14/2022.

You may contact me at the number above if you have questions.

Very truly yours,

Steve VanGieson"