

KANSAS CORPORATION COMMISSION
OIL & GAS CONSERVATION DIVISION

Form must be Typed

Form must be signed

All blanks must be complete

TEMPORARY ABANDONMENT WELL APPLICATION

OPERATOR: License# _____

Name: _____

Address 1: _____

Address 2: _____

City: _____ State: _____ Zip: _____ + _____

Contact Person: _____

Phone: (_____) _____

Contact Person Email: _____

Field Contact Person: _____

Field Contact Person Phone: (_____) _____

API No. 15- _____

Spot Description: _____

____ - ____ - ____ - ____ Sec. _____ Twp. _____ S. R. _____ ☐ E ☐ W_____ feet from ☐ N / ☐ S Line of Section_____ feet from ☐ E / ☐ W Line of Section

GPS Location: Lat: _____, Long: _____

(e.g. xx.xxxxx)

Datum: ☐ NAD27 ☐ NAD83 ☐ WGS84

(e.g. -xxx.xxxxx)

County: _____ Elevation: _____ ☐ GL ☐ KB

Lease Name: _____ Well #: _____

Well Type: (check one) ☐ Oil ☐ Gas ☐ OG ☐ WSW ☐ Other: _____☐ SWD Permit #: _____ ☐ ENHR Permit #: _____☐ Gas Storage Permit #: _____

Spud Date: _____ Date Shut-In: _____

	Conductor	Surface	Production	Intermediate	Liner	Tubing
Size						
Setting Depth						
Amount of Cement						
Top of Cement						
Bottom of Cement						

Casing Fluid Level from Surface: _____ How Determined? _____ Date: _____

Casing Squeeze(s): _____ to _____ w / _____ sacks of cement, _____ to _____ w / _____ sacks of cement. Date: _____
(top) (bottom) (top) (bottom)Do you have a valid Oil & Gas Lease? ☐ Yes ☐ NoDepth and Type: ☐ Junk in Hole at _____ ☐ Tools in Hole at _____ Casing Leaks: ☐ Yes ☐ No Depth of casing leak(s): _____
(depth) (depth)Type Completion: ☐ ALT. I ☐ ALT. II Depth of: ☐ DV Tool: _____ w / _____ sacks of cement ☐ Port Collar: _____ w / _____ sack of cement
(depth) (depth)

Packer Type: _____ Size: _____ Inch Set at: _____ Feet

Total Depth: _____ Plug Back Depth: _____ Plug Back Method: _____

Geological Data:

Formation Name	Formation Top	Formation Base	Completion Information
1. _____	At: _____ to _____ Feet	Perforation Interval _____ to _____ Feet or Open Hole Interval _____ to _____ Feet	
2. _____	At: _____ to _____ Feet	Perforation Interval _____ to _____ Feet or Open Hole Interval _____ to _____ Feet	

UNDER PENALTY OF PERJURY I HEREBY ATTEST THAT THE INFORMATION CONTAINED HEREIN IS TRUE AND CORRECT TO THE BEST OF MY KNOWLEDGE


Submitted Electronically

**Do NOT Write in This
Space - KCC USE ONLY**

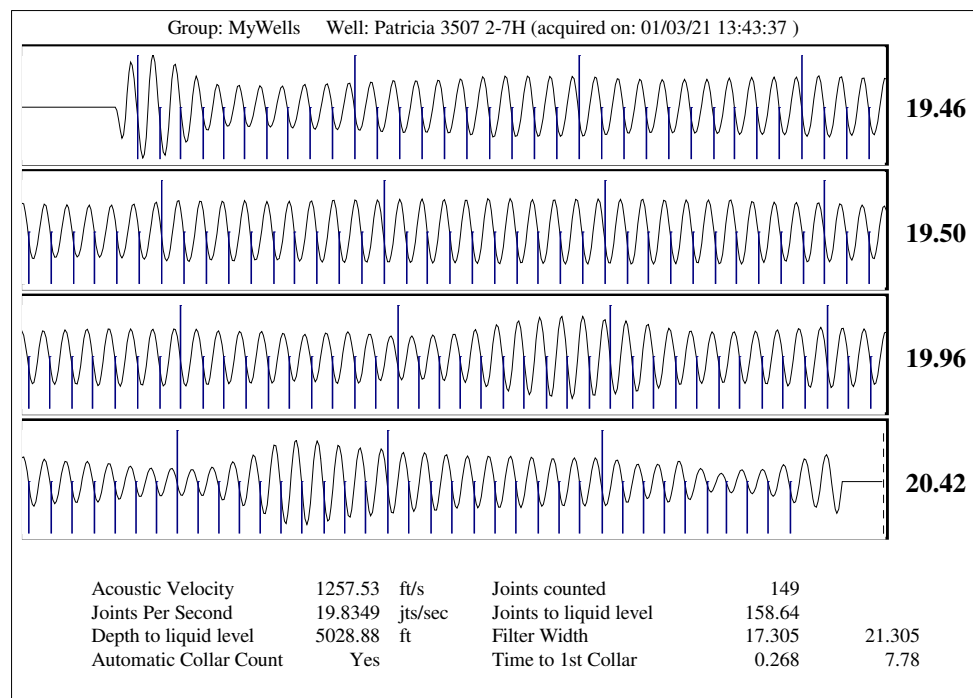
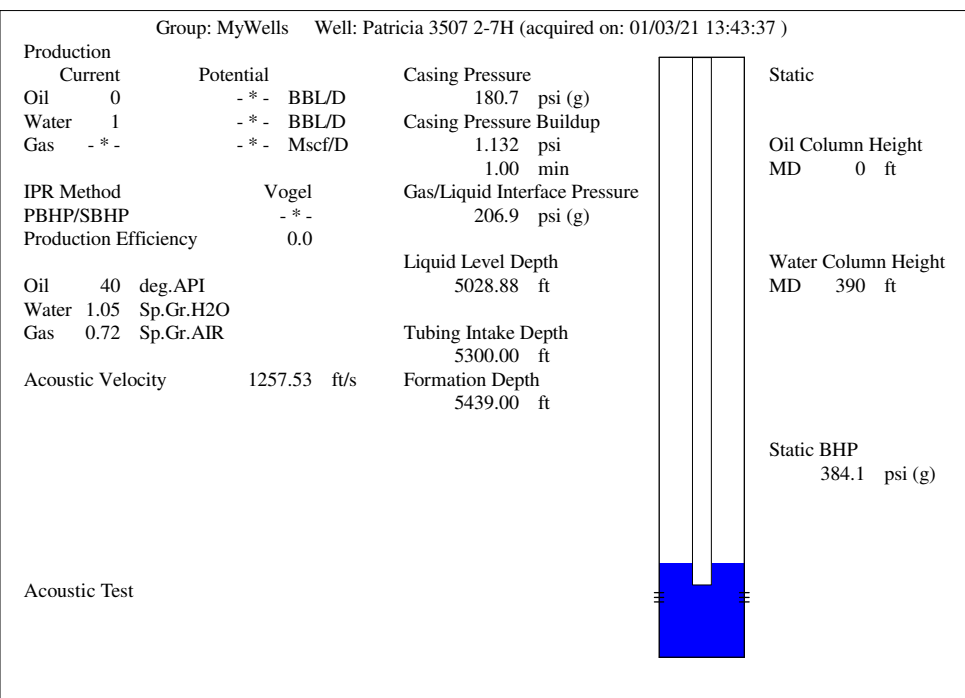
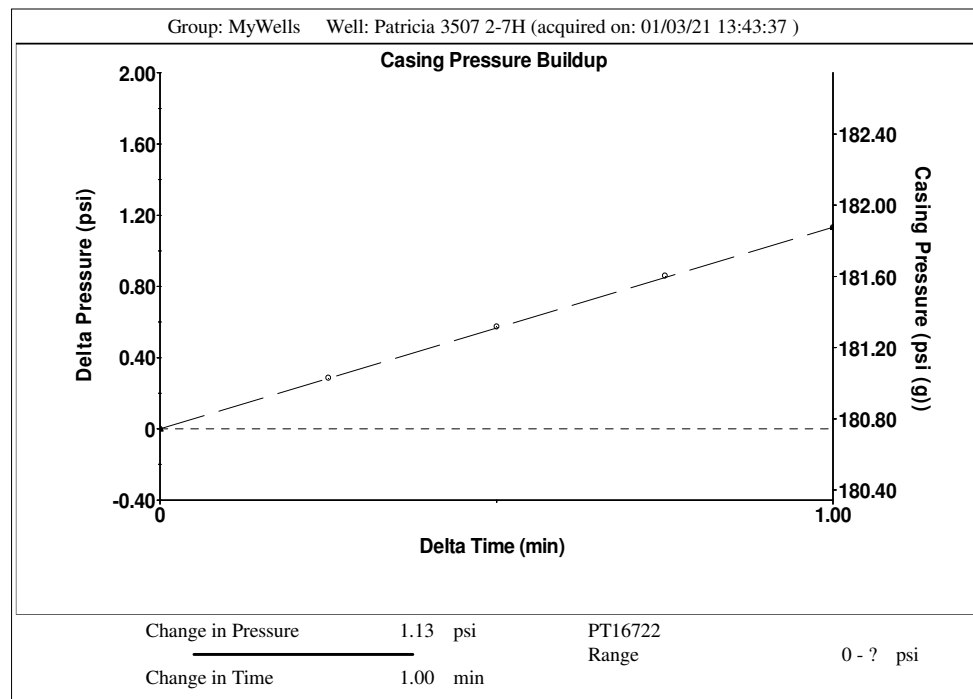
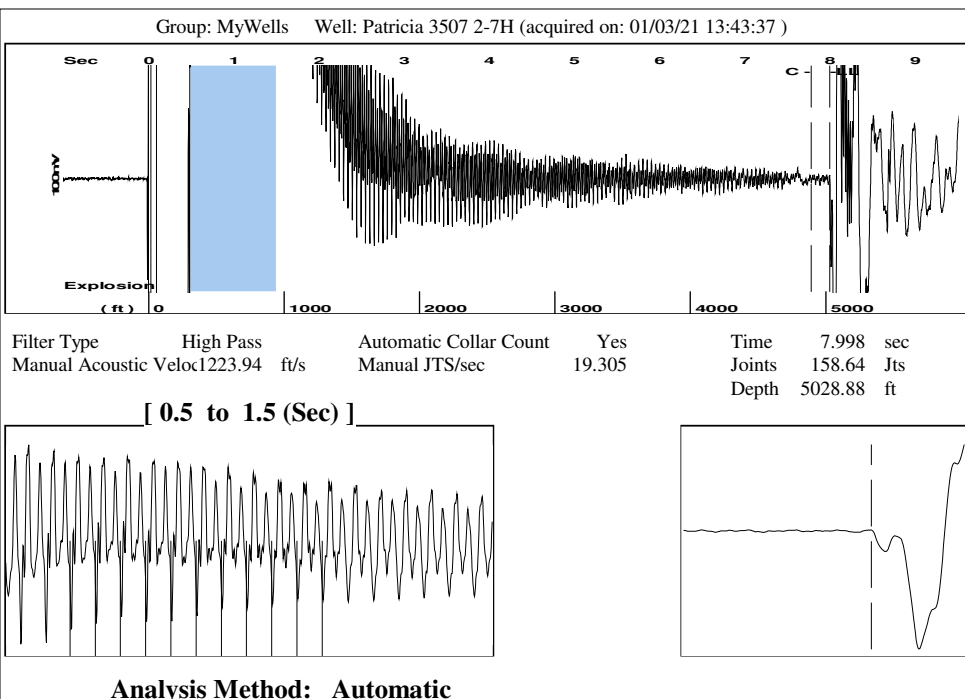
Date Tested: _____ Results: _____ Date Plugged: _____ Date Repaired: _____ Date Put Back in Service: _____

Review Completed by: _____ Comments: _____

TA Approved: ☐ Yes ☐ Denied Date: _____**Mail to the Appropriate KCC Conservation Office:**

	KCC District Office #1 - 210 E. Frontview, Suite A, Dodge City, KS 67801	Phone 620.682.7933
	KCC District Office #2 - 3450 N. Rock Road, Building 600, Suite 601, Wichita, KS 67226	Phone 316.337.7400
	KCC District Office #3 - 137 E. 21st St., Chanute, KS 66720	Phone 620.902.6450
	KCC District Office #4 - 2301 E. 13th Street, Hays, KS 67601-2651	Phone 785.261.6250

<div>General</div> <div> <div>Well ID125505</div> <div>WellPatricia 3507 2-7H</div> <div>CompanySandridge</div> <div>Operator- *-</div> <div>Lease NamePatricia 3507 2-7H</div> <div>Elevation1332.00ft</div> <div>Production MethodOther</div> <div>Dataset DescriptionPatricia 3507 2-7 Shot 1</div> </div> <div>Comment</div>						
<div>Surface Unit</div> <div> <div>Manufacturer- *-</div> <div>Unit ClassConventional</div> <div>Unit API Number- *-</div> <div>Measured Stroke Length- *-in</div> <div>RotationCW</div> <div>Counter Balance Effect (Weights Level)- *-Klb</div> <div>Weight Of Counter Weights2000lb</div> </div> <div> <div>Prime Mover</div> <div> <div>Motor TypeElectric</div> <div>Rated HP- *-HP</div> <div>Run Time24hr/day</div> <div>MFG/Comment- *-</div> </div> </div> <div> <div>Electric Motor Parameters</div> <div> <div>Rated Full Load AMPS- *-</div> <div>Rated Full Load RPM- *-</div> <div>Synchronous RPM1200</div> <div>Voltage- *-</div> <div>Hertz60</div> <div>Phase3</div> <div>Power Consumption5</div> <div>Power Demand8\$ /KW</div> </div> </div>						
<div> <div>Tubulars</div> <div> <div>Tubing OD2.875in</div> <div>Casing OD7.000in</div> <div>Average Joint Length31.700ft</div> <div>Anchor Depth- *-ft</div> <div>Kelly Bushing20.50ft</div> </div> <div> <div>Rod String</div> <div> <div>Rod Type- *-</div> <div>Rod Length- *-ft</div> <div>Rod Diameter- *-in</div> <div>Rod Weight0.0lb</div> </div> </div> <div> <div>Pump</div> <div> <div>Plunger Diameter- *-in</div> <div>Pump Intake Depth5300.00ft</div> <div>**Total Rod Length < Pump Depth</div> </div> <div> <div>Polished Rod</div> <div>Polished Rod Diameter- *-in</div> </div> </div> <div> <div> <div>Top Taper</div> <div> <div>Rod Type- *-</div> <div>Rod Length- *-ft</div> <div>Rod Diameter- *-in</div> <div>Rod Weight0.0lb</div> </div> <div> <div>Taper 2</div> <div> <div>Rod Type- *-</div> <div>Rod Length- *-ft</div> <div>Rod Diameter- *-in</div> <div>Rod Weight0.0lb</div> </div> <div> <div>Taper 3</div> <div> <div>Rod Type- *-</div> <div>Rod Length- *-ft</div> <div>Rod Diameter- *-in</div> <div>Rod Weight0.0lb</div> </div> <div> <div>Taper 4</div> <div> <div>Rod Type- *-</div> <div>Rod Length- *-ft</div> <div>Rod Diameter- *-in</div> <div>Rod Weight0.0lb</div> </div> <div> <div>Taper 5</div> <div> <div>Rod Type- *-</div> <div>Rod Length- *-ft</div> <div>Rod Diameter- *-in</div> <div>Rod Weight0.0lb</div> </div> <div> <div>Taper 6</div> <div> <div>Rod Type- *-</div> <div>Rod Length- *-ft</div> <div>Rod Diameter- *-in</div> <div>Rod Weight0.0lb</div> </div> </div> <div> <div>Total Rod Length0</div> <div>Total Rod Weight0.00</div> <div>Damp Up0.0515</div> <div>Damp Down0.0515</div> </div> </div></div></div></div></div></div></div>						
<div>Conditions</div> <div> <div>Pressure</div> <div> <div>Static BHP384.1psi (g)</div> <div>Static BHP MethodAcoustic</div> <div>Static BHP Date01/03/2021</div> </div> <div> <div>Producing BHP- *-psi (g)</div> <div>Producing BHP Method- *-</div> <div>Producing BHP Date- *-</div> <div>Formation Depth5439.00ft</div> </div> <div> <div>Surface Producing Pressures</div> <div> <div>Tubing Pressure- *-psi (g)</div> <div>Casing Pressure180.7psi (g)</div> </div> <div> <div>Casing Pressure Buildup</div> <div> <div>Change in Pressure1.132psi</div> <div>Over Change in Time1.00min</div> </div> </div> </div> <div> <div>Production</div> <div> <div>Oil Production0BBL/D</div> <div>Water Production1BBL/D</div> <div>Gas Production- *-Mscf/D</div> <div>Production Date12/10/2019</div> </div> <div> <div>Temperatures</div> <div> <div>Surface Temperature70deg F</div> <div>Bottomhole Temperature150deg F</div> </div> <div> <div>Fluid Properties</div> <div> <div>Oil API40deg API</div> <div>Water Specific Gravity1.05Sp.Gr.H2O</div> </div> </div> </div></div></div>						



January 14, 2021

Collette Davis
SandRidge Exploration and Production LLC
123 ROBERT S. KERR AVE
OKLAHOMA CITY, OK 73102-6406

Re: Temporary Abandonment
API 15-077-21954-02-00
PATRICIA 3507 2-7H ST1
NW/4 Sec.07-35S-07W
Harper County, Kansas

Dear Collette Davis:

"Your temporary abandonment (TA) application for the well listed above has been approved. In accordance with K.A.R. 82-3-111 the TA status of this well will expire 01/14/2022.

- * If you return this well to service or plug it, please notify the District Office.
- * If you sell this well you are required to file a Transfer of Operator form, T-1.
- * If the well will remain temporarily abandoned, you must submit a new TA application, CP-111, before 01/14/2022.

You may contact me at the number above if you have questions.

Very truly yours,

Steve VanGieson"