

KANSAS CORPORATION COMMISSION
OIL & GAS CONSERVATION DIVISION

TEMPORARY ABANDONMENT WELL APPLICATION

OPERATOR: License#
Name:
Address 1:
Address 2:
City: State: Zip:
Contact Person:
Phone:
Contact Person Email:
Field Contact Person:
Field Contact Person Phone:

API No. 15-
Spot Description:
Sec. Twp. S. R.
GPS Location: Lat: Long:
Datum: NAD27 NAD83 WGS84
County: Elevation:
Lease Name: Well #:
Well Type: Oil Gas OG WSW Other:
SWD Permit #: ENHR Permit #:
Gas Storage Permit #:
Spud Date: Date Shut-In:

Table with 7 columns: Conductor, Surface, Production, Intermediate, Liner, Tubing. Rows include Size, Setting Depth, Amount of Cement, Top of Cement, Bottom of Cement.

Casing Fluid Level from Surface: How Determined? Date:
Casing Squeeze(s): to w / sacks of cement, to w / sacks of cement. Date:
Do you have a valid Oil & Gas Lease? Yes No
Depth and Type: Junk in Hole at Tools in Hole at Casing Leaks: Yes No Depth of casing leak(s):
Type Completion: ALT. I ALT. II Depth of: DV Tool: w / sacks of cement Port Collar: w / sack of cement
Packer Type: Size: Inch Set at: Feet
Total Depth: Plug Back Depth: Plug Back Method:

Geological Date:

Table with 2 columns: Formation Name, Completion Information. Rows 1 and 2 for formation details.

UNDER PENALTY OF PERJURY I HEREBY ATTEST THAT THE INFORMATION CONTAINED HEREIN IS TRUE AND CORRECT TO THE BEST OF MY KNOWLEDGE

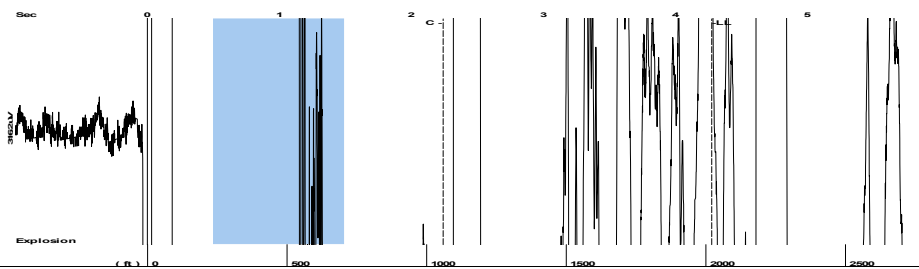
Submitted Electronically

Do NOT Write in This Space - KCC USE ONLY
Date Tested: Results: Date Plugged: Date Repaired: Date Put Back in Service:
Review Completed by: Comments:
TA Approved: Yes Denied Date:

Mail to the Appropriate KCC Conservation Office:

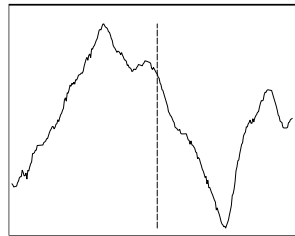
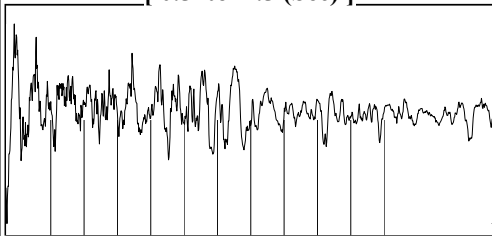
Table with 2 columns: Office Address, Phone. Rows for KCC District Office #1 through #4.

Group: Examples Well: FRENCH-MARY #1 (acquired on: 01/14/21 10:55:55)



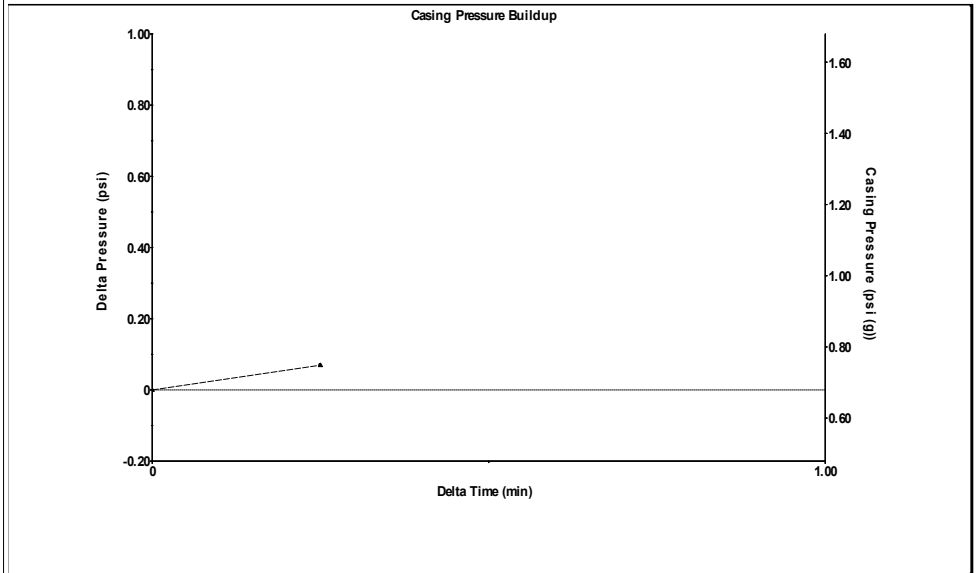
Filter Type High Pass Automatic Collar Count Yes Time 4.275 sec
 Manual Acoustic Veloc 925.547 ft/s Manual JTS/sec 14.5985 Joints 63.7328 Jts
 Depth 2020.33 ft

[0.5 to 1.5 (Sec)]



Analysis Method: Automatic

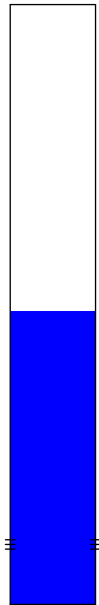
Group: Examples Well: FRENCH-MARY #1 (acquired on: 01/14/21 10:55:55)



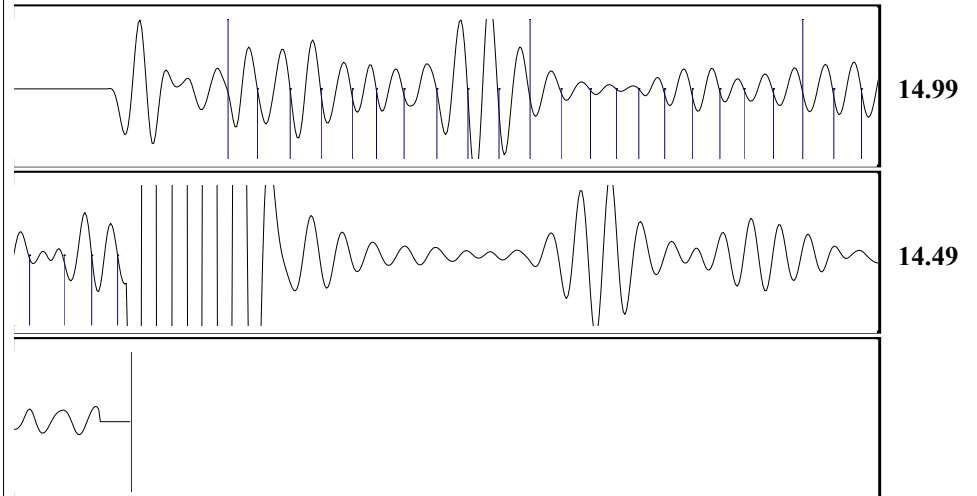
Change in Pressure 0.07 psi PT18514
 Change in Time 0.25 min Range 0 - ? psi

Group: Examples Well: FRENCH-MARY #1 (acquired on: 01/14/21 10:55:55)

Production					
Current	Potential	Casing Pressure		Producing	
Oil - *-	- *- BBL/D	0.7 psi (g)		Annular	
Water - *-	- *- BBL/D	Casing Pressure Buildup		Gas Flow	
Gas - *-	- *- Mscf/D	0.070 psi		- *- Mscf/D	
		0.25 min		% Liquid	
IPR Method	Vogel	Gas/Liquid Interface Pressure		100 %	
PBHP/SBHP	- *-	- *- psi (g)			
Production Efficiency	0.0				
		Liquid Level Depth			
Oil 40 deg.API		2020.33 ft			
Water 1.05 Sp.Gr.H2O		Pump Intake Depth			
Gas 1.02 Sp.Gr.AIR		- *- ft			
Acoustic Velocity	945.183 ft/s	Formation Depth			
		3930.00 ft			
Formation Submergence				Pump Intake	
Total Gaseous Liquid Column HT (TVD)	- *- ft			- *- psi (g)	
Equivalent Gas Free Liquid HT (TVD)	- *- ft			Producing BHP	
				- *- psi (g)	
				Static BHP	
				- *- psi (g)	



Group: Examples Well: FRENCH-MARY #1 (acquired on: 01/14/21 10:55:55)



Acoustic Velocity 945.183 ft/s Joints counted 26
 Joints Per Second 14.9083 jts/sec Joints to liquid level 63.7328
 Depth to liquid level 2020.33 ft Filter Width 12.5985 16.5985
 Automatic Collar Count Yes Time to 1st Collar 0.496 2.24

Conservation Division
District Office No. 4
2301 E. 13th Street
Hays, KS 67601-2651



Phone: 785-261-6250
Fax: 785-625-0564
<http://kcc.ks.gov/>

Susan K. Duffy, Chair
Dwight D. Keen, Commissioner
Andrew J. French, Commissioner

Laura Kelly, Governor

January 19, 2021

Jose Reyes
American Warrior, Inc.
PO BOX 399
GARDEN CITY, KS 67846-0399

Re: Temporary Abandonment
API 15-051-23694-00-00
FRENCH-MARY 1
SE/4 Sec.35-13S-20W
Ellis County, Kansas

Dear Jose Reyes:

"Your temporary abandonment (TA) application for the well listed above has been approved. In accordance with K.A.R. 82-3-111 the TA status of this well will expire 01/19/2022.

- * If you return this well to service or plug it, please notify the District Office.
- * If you sell this well you are required to file a Transfer of Operator form, T-1.
- * If the well will remain temporarily abandoned, you must submit a new TA application, CP-111, before 01/19/2022.

You may contact me at the number above if you have questions.

Very truly yours,

RICHARD WILLIAMS"