

KANSAS CORPORATION COMMISSION
OIL & GAS CONSERVATION DIVISION

TEMPORARY ABANDONMENT WELL APPLICATION

OPERATOR: License# _____
 Name: _____
 Address 1: _____
 Address 2: _____
 City: _____ State: _____ Zip: _____ + _____
 Contact Person: _____
 Phone: (_____) _____
 Contact Person Email: _____
 Field Contact Person: _____
 Field Contact Person Phone: (_____) _____

API No. 15- _____
 Spot Description: _____
 _____ - _____ - _____ - _____ Sec. _____ Twp. _____ S. R. _____ E W
 _____ feet from N / S Line of Section
 _____ feet from E / W Line of Section
 GPS Location: Lat: _____, Long: _____
(e.g. xx.xxxxx) (e.g. -xxx.xxxxx)
 Datum: NAD27 NAD83 WGS84
 County: _____ Elevation: _____ GL KB
 Lease Name: _____ Well #: _____
 Well Type: (check one) Oil Gas OG WSW Other: _____
 SWD Permit #: _____ ENHR Permit #: _____
 Gas Storage Permit #: _____
 Spud Date: _____ Date Shut-In: _____

	Conductor	Surface	Production	Intermediate	Liner	Tubing
Size						
Setting Depth						
Amount of Cement						
Top of Cement						
Bottom of Cement						

Casing Fluid Level from Surface: _____ How Determined? _____ Date: _____
 Casing Squeeze(s): _____ to _____ w / _____ sacks of cement, _____ to _____ w / _____ sacks of cement. Date: _____
(top) (bottom) (top) (bottom)
 Do you have a valid Oil & Gas Lease? Yes No
 Depth and Type: Junk in Hole at _____ Tools in Hole at _____ Casing Leaks: Yes No Depth of casing leak(s): _____
(depth) (depth)
 Type Completion: ALT. I ALT. II Depth of: DV Tool: _____ w / _____ sacks of cement Port Collar: _____ w / _____ sack of cement
(depth) (depth)
 Packer Type: _____ Size: _____ Inch Set at: _____ Feet
 Total Depth: _____ Plug Back Depth: _____ Plug Back Method: _____

Geological Data:

Formation Name	Formation Top	Formation Base	Completion Information
1. _____	At: _____	to _____ Feet	Perforation Interval _____ to _____ Feet or Open Hole Interval _____ to _____ Feet
2. _____	At: _____	to _____ Feet	Perforation Interval _____ to _____ Feet or Open Hole Interval _____ to _____ Feet

UNDER PENALTY OF PERJURY I HEREBY ATTEST THAT THE INFORMATION CONTAINED HEREIN IS TRUE AND CORRECT TO THE BEST OF MY KNOWLEDGE

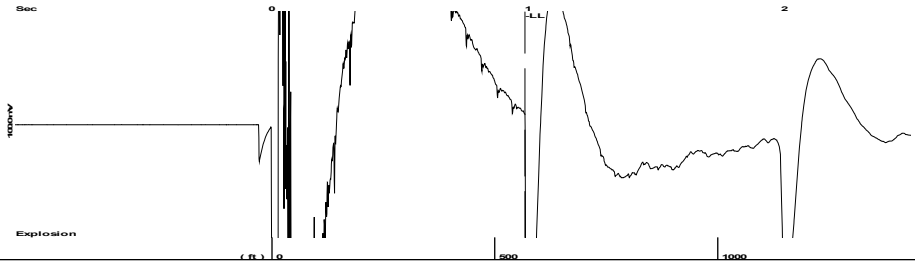
Submitted Electronically

Do NOT Write in This Space - KCC USE ONLY	Date Tested: _____	Results: _____	Date Plugged: _____	Date Repaired: _____	Date Put Back in Service: _____
	Review Completed by: _____ Comments: _____				
TA Approved: <input type="checkbox"/> Yes <input type="checkbox"/> Denied Date: _____					

Mail to the Appropriate KCC Conservation Office:

	KCC District Office #1 - 210 E. Frontview, Suite A, Dodge City, KS 67801	Phone 620.682.7933
	KCC District Office #2 - 3450 N. Rock Road, Building 600, Suite 601, Wichita, KS 67226	Phone 316.337.7400
	KCC District Office #3 - 137 E. 21st St., Chanute, KS 66720	Phone 620.902.6450
	KCC District Office #4 - 2301 E. 13th Street, Hays, KS 67601-2651	Phone 785.261.6250

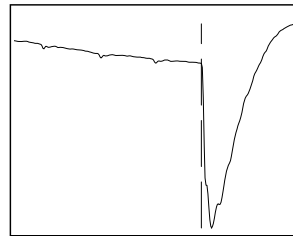
Group: MyWells Well: Mills A 38 (acquired on: 01/15/21 14:15:59)



Time 0.987 sec
 Joints 17.5977 Jts
 Depth 567.52 ft

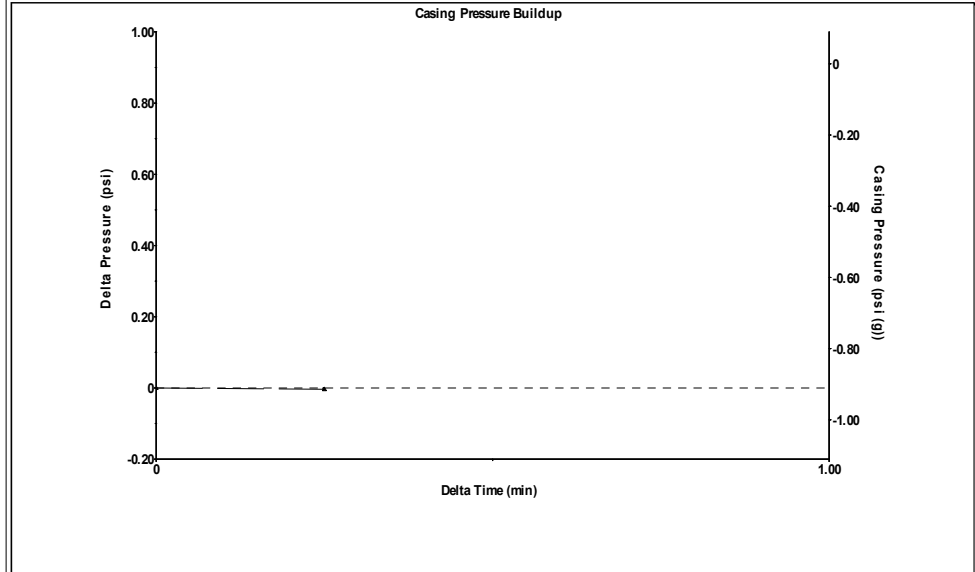
Liquid level calculated with user supplied Acoustic Velocity

Acoustic Velocity 1150 ft/s



Analysis Method: Acoustic Velocity

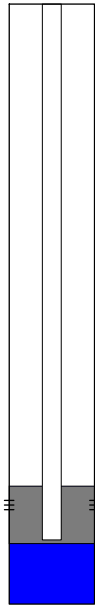
Group: MyWells Well: Mills A 38 (acquired on: 01/15/21 14:15:59)



Change in Pressure -0.00 psi PT 12849
 Range 0 - ? psi
 Change in Time 0.25 min

Group: MyWells Well: Mills A 38 (acquired on: 01/15/21 14:15:59)

Production Current	Potential	Casing Pressure	Producing
Oil - * -	- * - BBL/D	-0.9 psi (g)	Annular Gas Flow
Water - * -	- * - BBL/D	Casing Pressure Buildup	0 Mscf/D
Gas - * -	- * - Mscf/D	-0.004 psi	% Liquid
		0.25 min	100 %
IPR Method	Vogel	Gas/Liquid Interface Pressure	
PBHP/SBHP	- * -	-0.7 psi (g)	
Production Efficiency	0.0		
Oil 40 deg.API		Liquid Level Depth	
Water 1.05 Sp.Gr.H2O		567.52 ft	
Gas 0.85 Sp.Gr.AIR		Pump Intake Depth	
		645.00 ft	
Acoustic Velocity 1150 ft/s		Formation Depth	
		598.00 ft	
Formation Submergence			Pump Intake
Total Gaseous Liquid Column HT (TVD)	77 ft		25.7 psi (g)
Equivalent Gas Free Liquid HT (TVD)	77 ft		Producing BHP
			9.7 psi (g)
Acoustic Test			Static BHP
			0.1 psi (g)



Group: MyWells Well: Mills A 38 (acquired on: 01/15/21 14:15:59)

Entered Acoustic Velocity for Liquid Level depth determination

Conservation Division
District Office No. 2
3450 N. Rock Road
Building 600, Suite 601
Wichita, KS 67226



Phone: 316-337-7400
Fax: 316-630-4005
<http://kcc.ks.gov/>

Andrew J. French, Chairman
Dwight D. Keen, Commissioner
Susan K. Duffy, Commissioner

Laura Kelly, Governor

January 29, 2021

Shane Summers
Vess Oil Corporation
1700 WATERFRONT PKWY BLDG 500
WICHITA, KS 67206-6619

Re: Temporary Abandonment
API 15-015-21980-00-04
MILLS A 38
SW/4 Sec.22-25S-05E
Butler County, Kansas

Dear Shane Summers:

"Your temporary abandonment (TA) application for the well listed above has been approved. In accordance with K.A.R. 82-3-111 the TA status of this well will expire 01/29/2022.

- * If you return this well to service or plug it, please notify the District Office.
- * If you sell this well you are required to file a Transfer of Operator form, T-1.
- * If the well will remain temporarily abandoned, you must submit a new TA application, CP-111, before 01/29/2022.

You may contact me at the number above if you have questions.

Very truly yours,

Neal Rupp ECRS"