

KANSAS CORPORATION COMMISSION
OIL & GAS CONSERVATION DIVISION

TEMPORARY ABANDONMENT WELL APPLICATION

OPERATOR: License#
Name:
Address 1:
Address 2:
City: State: Zip:
Contact Person:
Phone:
Contact Person Email:
Field Contact Person:
Field Contact Person Phone:

API No. 15-
Spot Description:
Sec. Twp. S. R.
GPS Location: Lat, Long
Datum: NAD27, NAD83, WGS84
County: Elevation:
Lease Name: Well #:
Well Type: Oil, Gas, OG, WSW, Other
SWD Permit #: ENHR Permit #:
Gas Storage Permit #:
Spud Date: Date Shut-In:

Table with 7 columns: Conductor, Surface, Production, Intermediate, Liner, Tubing. Rows include Size, Setting Depth, Amount of Cement, Top of Cement, Bottom of Cement.

Casing Fluid Level from Surface: How Determined? Date:
Casing Squeeze(s): to w / sacks of cement, to w / sacks of cement. Date:
Do you have a valid Oil & Gas Lease? Yes No
Depth and Type: Junk in Hole at Tools in Hole at Casing Leaks: Yes No Depth of casing leak(s):
Type Completion: ALT. I ALT. II Depth of: DV Tool: w / sacks of cement Port Collar: w / sack of cement
Packer Type: Size: Inch Set at: Feet
Total Depth: Plug Back Depth: Plug Back Method:

Geological Date:

Table with 4 columns: Formation Name, Formation Top, Formation Base, Completion Information. Rows 1 and 2.

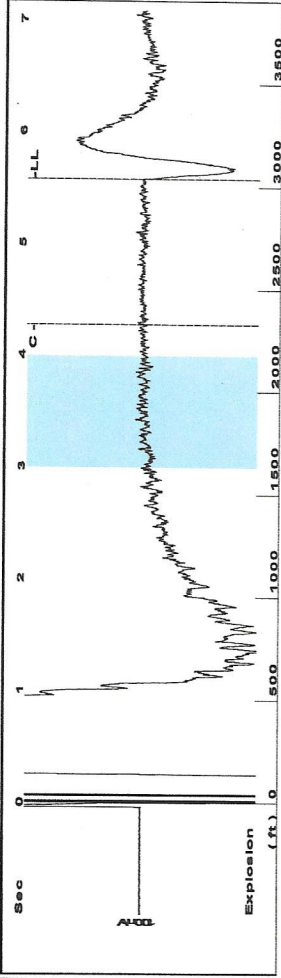
UNDER PENALTY OF PERJURY I HEREBY ATTEST THAT THE INFORMATION CONTAINED HEREIN IS TRUE AND CORRECT TO THE BEST OF MY KNOWLEDGE

Submitted Electronically

Do NOT Write in This Space - KCC USE ONLY
Date Tested: Results: Date Plugged: Date Repaired: Date Put Back in Service:
Review Completed by: Comments:
TA Approved: Yes Denied Date:

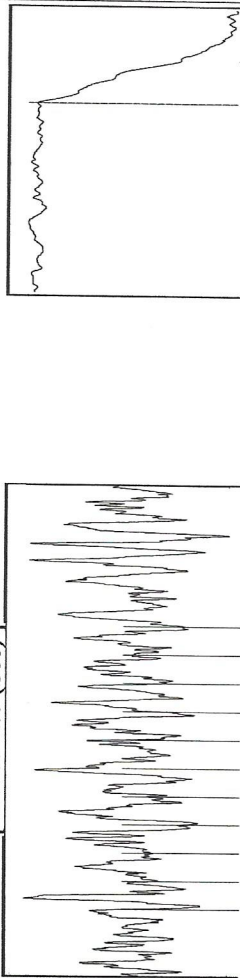
Mail to the Appropriate KCC Conservation Office:

Table with 2 columns: Office Address, Phone. Rows for District Office #1, #2, #3, #4.



Filter Type High Pass Automatic Collar Count Yes Time 5.571 sec  
 Manual Acoustic Veloc 1074.52 ft/s Manual JTS/sec 17.331 Joints 97.9824 Jts  
 Depth 3037.45 ft

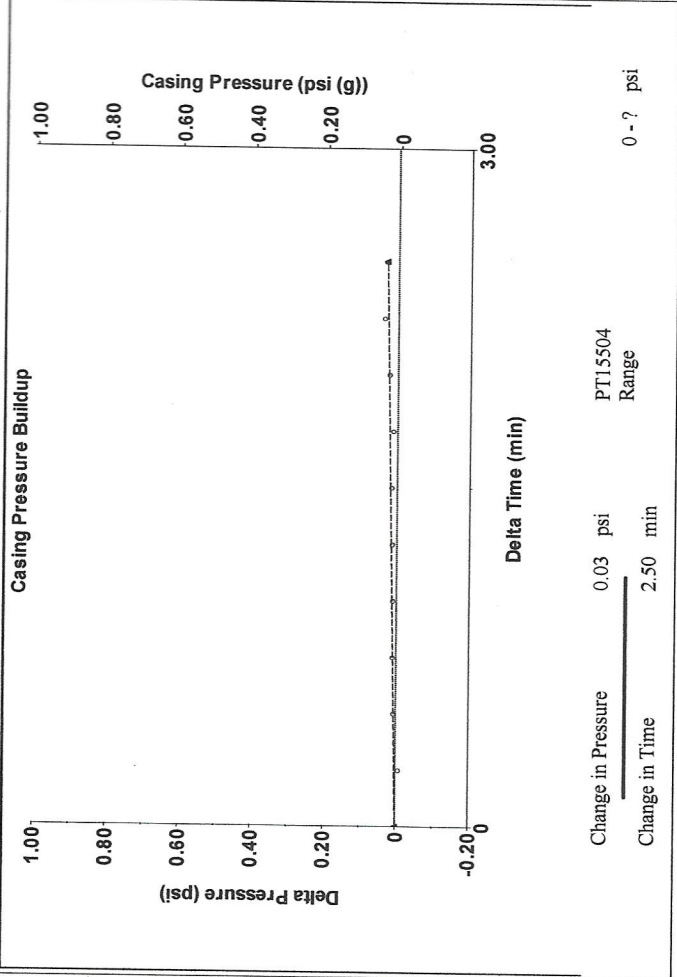
[ 3.0 to 4.0 (Sec) ]



Change in Pressure 0.03 psi PT15504 Range  
 Change in Time 2.50 min

**Analysis Method: Automatic**

Production Current	Oil 0	Water 0	Gas 0.0
IPR Method	39 deg.API	1.05 Sp.Gr.H2O	0.90 Sp.Gr.AIR
PBHP/SBHP	-*-	-*-	-*-
Production Efficiency	0.0		
Potential	-*- BBL/D	-*- BBL/D	-*- Mscf/D
Casing Pressure	0.0 psi (g)		
Casing Pressure Buildup	0.031 psi		
Gas/Liquid Interface Pressure	2.50 min		
Vogel	1.4 psi (g)		
Liquid Level Depth	3037.45 ft		
Pump Intake Depth	4562.00 ft		
Formation Depth	4072.00 ft		
Acoustic Velocity	1090.45 ft/s		
Formation Submergence			
Total Gaseous Liquid Column HT (TVD)	1525 ft		
Equivalent Gas Free Liquid HT (TVD)	1525 ft		
Acoustic Test			
Producing	Annular Gas Flow 0 Mscf/D	% Liquid 100 %	
Pump Intake	694.6 psi (g)		
Producing BHP	471.8 psi (g)		
Static BHP	-*- psi (g)		



Change in Pressure 0.03 psi PT15504 Range  
 Change in Time 2.50 min

17.77

17.43

17.61

Acoustic Velocity	1090.45 ft/s	Joints counted	70
Joints Per Second	17.5879 jts/sec	Joints to liquid level	97.9824
Depth to liquid level	3037.45 ft	Filter Width	15.331
Automatic Collar Count	Yes	Time to 1st Collar	0.292
			19.331
			4.272

Conservation Division  
District Office No. 1  
210 E. Frontview, Suite A  
Dodge City, KS 67801



Phone: 620-682-7933  
<http://kcc.ks.gov/>

Andrew J. French, Chairman  
Dwight D. Keen, Commissioner  
Susan K. Duffy, Commissioner

Laura Kelly, Governor

January 29, 2021

Kent Strube  
Hartman Oil Co., Inc.  
10500 E BERKELEY SQ PKWY STE 100  
WICHITA, KS 67206-6816

Re: Temporary Abandonment  
API 15-055-10052-00-00  
DAMME 14  
NE/4 Sec.28-22S-33W  
Finney County, Kansas

Dear Kent Strube:

"Your temporary abandonment (TA) application for the well listed above has been approved. In accordance with K.A.R. 82-3-111 the TA status of this well will expire 01/29/2022.

- \* If you return this well to service or plug it, please notify the District Office.
- \* If you sell this well you are required to file a Transfer of Operator form, T-1.
- \* If the well will remain temporarily abandoned, you must submit a new TA application, CP-111, before 01/29/2022.

You may contact me at the number above if you have questions.

Very truly yours,

Michael Maier"