

KANSAS CORPORATION COMMISSION  
OIL & GAS CONSERVATION DIVISION

TEMPORARY ABANDONMENT WELL APPLICATION

OPERATOR: License# \_\_\_\_\_  
 Name: \_\_\_\_\_  
 Address 1: \_\_\_\_\_  
 Address 2: \_\_\_\_\_  
 City: \_\_\_\_\_ State: \_\_\_\_\_ Zip: \_\_\_\_\_ + \_\_\_\_\_  
 Contact Person: \_\_\_\_\_  
 Phone: ( \_\_\_\_\_ ) \_\_\_\_\_  
 Contact Person Email: \_\_\_\_\_  
 Field Contact Person: \_\_\_\_\_  
 Field Contact Person Phone: ( \_\_\_\_\_ ) \_\_\_\_\_

API No. 15- \_\_\_\_\_  
 Spot Description: \_\_\_\_\_  
 \_\_\_\_\_ - \_\_\_\_\_ - \_\_\_\_\_ - \_\_\_\_\_ Sec. \_\_\_\_\_ Twp. \_\_\_\_\_ S. R. \_\_\_\_\_  E  W  
 \_\_\_\_\_ feet from  N /  S Line of Section  
 \_\_\_\_\_ feet from  E /  W Line of Section  
 GPS Location: Lat: \_\_\_\_\_, Long: \_\_\_\_\_  
(e.g. xx.xxxxx) (e.g. -xxx.xxxxx)  
 Datum:  NAD27  NAD83  WGS84  
 County: \_\_\_\_\_ Elevation: \_\_\_\_\_  GL  KB  
 Lease Name: \_\_\_\_\_ Well #: \_\_\_\_\_  
 Well Type: (check one)  Oil  Gas  OG  WSW  Other: \_\_\_\_\_  
 SWD Permit #: \_\_\_\_\_  ENHR Permit #: \_\_\_\_\_  
 Gas Storage Permit #: \_\_\_\_\_  
 Spud Date: \_\_\_\_\_ Date Shut-In: \_\_\_\_\_

	Conductor	Surface	Production	Intermediate	Liner	Tubing
Size						
Setting Depth						
Amount of Cement						
Top of Cement						
Bottom of Cement						

Casing Fluid Level from Surface: \_\_\_\_\_ How Determined? \_\_\_\_\_ Date: \_\_\_\_\_  
 Casing Squeeze(s): \_\_\_\_\_ to \_\_\_\_\_ w / \_\_\_\_\_ sacks of cement, \_\_\_\_\_ to \_\_\_\_\_ w / \_\_\_\_\_ sacks of cement. Date: \_\_\_\_\_  
(top) (bottom) (top) (bottom)  
 Do you have a valid Oil & Gas Lease?  Yes  No  
 Depth and Type:  Junk in Hole at \_\_\_\_\_  Tools in Hole at \_\_\_\_\_ Casing Leaks:  Yes  No Depth of casing leak(s): \_\_\_\_\_  
(depth) (depth)  
 Type Completion:  ALT. I  ALT. II Depth of:  DV Tool: \_\_\_\_\_ w / \_\_\_\_\_ sacks of cement  Port Collar: \_\_\_\_\_ w / \_\_\_\_\_ sack of cement  
(depth) (depth)  
 Packer Type: \_\_\_\_\_ Size: \_\_\_\_\_ Inch Set at: \_\_\_\_\_ Feet  
 Total Depth: \_\_\_\_\_ Plug Back Depth: \_\_\_\_\_ Plug Back Method: \_\_\_\_\_

**Geological Data:**

Formation Name	Formation Top	Formation Base	Completion Information
1. _____	At: _____	to _____ Feet	Perforation Interval _____ to _____ Feet or Open Hole Interval _____ to _____ Feet
2. _____	At: _____	to _____ Feet	Perforation Interval _____ to _____ Feet or Open Hole Interval _____ to _____ Feet

UNDER PENALTY OF PERJURY I HEREBY ATTEST THAT THE INFORMATION CONTAINED HEREIN IS TRUE AND CORRECT TO THE BEST OF MY KNOWLEDGE

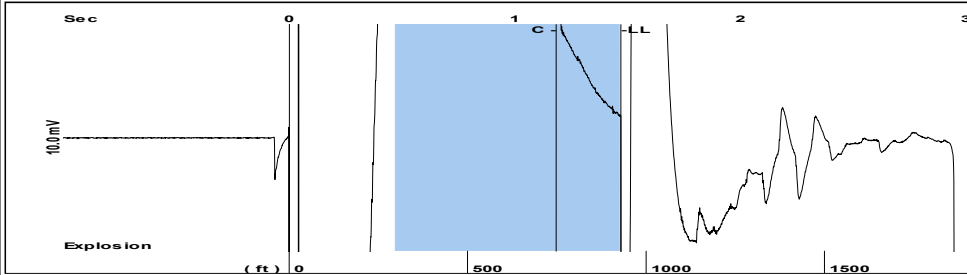
Submitted Electronically

<b>Do NOT Write in This Space - KCC USE ONLY</b>	Date Tested: _____	Results: _____	Date Plugged: _____	Date Repaired: _____	Date Put Back in Service: _____
	Review Completed by: _____ Comments: _____				
TA Approved: <input type="checkbox"/> Yes <input type="checkbox"/> Denied Date: _____					

Mail to the Appropriate KCC Conservation Office:

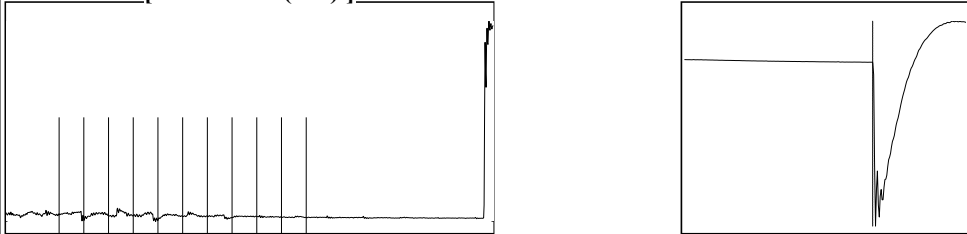
	KCC District Office #1 - 210 E. Frontview, Suite A, Dodge City, KS 67801	Phone 620.682.7933
	KCC District Office #2 - 3450 N. Rock Road, Building 600, Suite 601, Wichita, KS 67226	Phone 316.337.7400
	KCC District Office #3 - 137 E. 21st St., Chanute, KS 66720	Phone 620.902.6450
	KCC District Office #4 - 2301 E. 13th Street, Hays, KS 67601-2651	Phone 785.261.6250

Group: MyWells Well: Baier 1-6 (acquired on: 01/20/21 10:17:36)



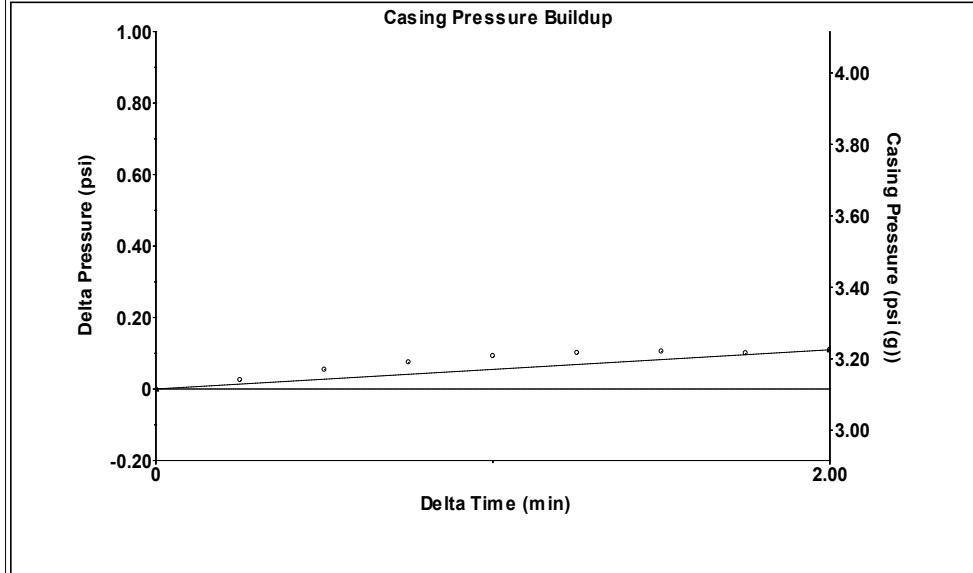
Filter Type High Pass Automatic Collar Count Yes Time 1.471 sec  
 Manual Acoustic Velo 1250.49 ft/s Manual JTS/sec 19.7239 Joints 29.3134 Jts  
 Depth 929.23 ft

[ 0.5 to 1.5 (Sec) ]



Analysis Method: Automatic

Group: MyWells Well: Baier 1-6 (acquired on: 01/20/21 10:17:36)

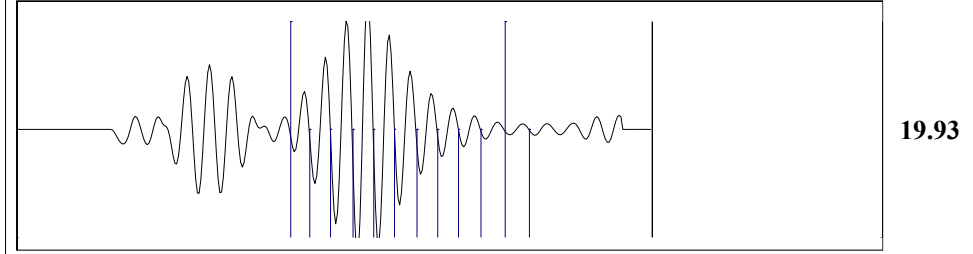


Change in Pressure 0.11 psi PT 17384  
 Change in Time 2.00 min Range 0 - ? psi

Group: MyWells Well: Baier 1-6 (acquired on: 01/20/21 10:17:36)

Production Current	Potential	Casing Pressure	Producing
Oil - *-	- *- BBL/D	3.1 psi (g)	
Water - *-	- *- BBL/D	Casing Pressure Buildup	Annular Gas Flow
Gas - *-	- *- Mscf/D	0.1 psi	0 Mscf/D
		2.00 min	% Liquid
IPR Method	Vogel	Gas/Liquid Interface Pressure	100 %
PBHP/SBHP	- *-	3.5 psi (g)	
Production Efficiency	0.0		
		Liquid Level Depth	
Oil 40 deg.API		929.23 ft	
Water 1.05 Sp.Gr.H2O		Tubing Intake Depth	
Gas 0.72 Sp.Gr.AIR		3720.00 ft	
Acoustic Velocity	1263.41 ft/s	Formation Depth	
		3720.00 ft	
			Tubing Intake
Formation Submergence			1272.4 psi (g)
Total Gaseous Liquid Column HT (TVD)	2791 ft		Producing BHP
Equivalent Gas Free Liquid HT (TVD)	2791 ft		1272.4 psi (g)
			Static BHP
Acoustic Test			- *- psi (g)

Group: MyWells Well: Baier 1-6 (acquired on: 01/20/21 10:17:36)



19.93

Acoustic Velocity 1263.41 ft/s Joints counted 11  
 Joints Per Second 19.9275 jts/sec Joints to liquid level 29.3134  
 Depth to liquid level 929.235 ft Filter Width 17.7239 21.7239  
 Automatic Collar Count Yes Time to 1st Collar 0.632 1.184

Group: MyWells Well: Baier 1-6 (acquired on: 01/20/21 10:17:36 )

Production	Current	Potential
Oil	- * -	- * - BBL/D
Water	- * -	- * - BBL/D
Gas	- * -	- * - Mscf/D

Based on SBHP psi (g)

IPR Method Vogel

Calculation for Continous Removal of Liquids  
Method:

Turner Critical Velocity for Gas Wells

For Tubing ID: 2.441 in

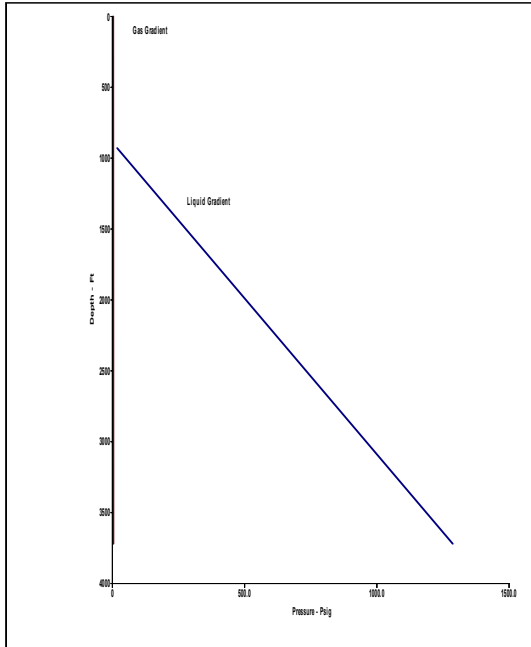
For Water: Mscf/D

For Condensate: Mscf/D

Back Pressure on Formation

Due To Liquid Loading: 1282.33 Mscf/D

Tubing ID in	Gas Rate Mscf/D	Predicted Status
2.441		
1.995		
1.500		
1.250		
1.000		



Conservation Division  
District Office No. 1  
210 E. Frontview, Suite A  
Dodge City, KS 67801



Phone: 620-682-7933  
<http://kcc.ks.gov/>

Andrew J. French, Chairperson  
Dwight D. Keen, Commissioner  
Susan K. Duffy, Commissioner

Laura Kelly, Governor

February 09, 2021

Melody C. Fletcher  
Oil Producers Inc. of Kansas  
1710 WATERFRONT PKWY  
WICHITA, KS 67206-6603

Re: Temporary Abandonment  
API 15-185-23676-00-00  
Baier 1-6  
SW/4 Sec.06-22S-13W  
Stafford County, Kansas

Dear Melody C. Fletcher:

"Your temporary abandonment (TA) application for the well listed above has been approved. In accordance with K.A.R. 82-3-111 the TA status of this well will expire 09/13/2021.

- \* If you return this well to service or plug it, please notify the District Office.
- \* If you sell this well you are required to file a Transfer of Operator form, T-1.
- \* If the well will remain temporarily abandoned, you must submit a new TA application, CP-111, before 09/13/2021.

You may contact me at the number above if you have questions.

Very truly yours,

Michael Maier"