

KANSAS CORPORATION COMMISSION
OIL & GAS CONSERVATION DIVISION

TEMPORARY ABANDONMENT WELL APPLICATION

OPERATOR: License#
Name:
Address 1:
Address 2:
City: State: Zip:
Contact Person:
Phone:
Contact Person Email:
Field Contact Person:
Field Contact Person Phone:

API No. 15-
Spot Description:
Sec. Twp. S. R.
GPS Location: Lat: Long:
Datum: NAD27 NAD83 WGS84
County: Elevation:
Lease Name: Well #:
Well Type: Oil Gas OG WSW Other:
SWD Permit #: ENHR Permit #:
Gas Storage Permit #:
Spud Date: Date Shut-In:

Table with 7 columns: Conductor, Surface, Production, Intermediate, Liner, Tubing. Rows include Size, Setting Depth, Amount of Cement, Top of Cement, Bottom of Cement.

Casing Fluid Level from Surface: How Determined? Date:
Casing Squeeze(s): to w / sacks of cement, to w / sacks of cement. Date:
Do you have a valid Oil & Gas Lease? Yes No
Depth and Type: Junk in Hole at Tools in Hole at Casing Leaks: Yes No Depth of casing leak(s):
Type Completion: ALT. I ALT. II Depth of: DV Tool: w / sacks of cement Port Collar: w / sack of cement
Packer Type: Size: Inch Set at: Feet
Total Depth: Plug Back Depth: Plug Back Method:

Geological Date:

Table with 4 columns: Formation Name, Formation Top, Formation Base, Completion Information. Rows 1 and 2.

UNDER PENALTY OF PERJURY I HEREBY ATTEST THAT THE INFORMATION CONTAINED HEREIN IS TRUE AND CORRECT TO THE BEST OF MY KNOWLEDGE

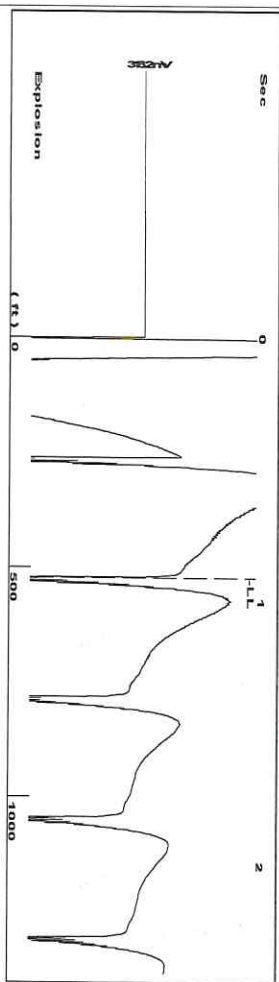
Submitted Electronically

Form with fields: Do NOT Write in This Space - KCC USE ONLY, Date Tested, Results, Date Plugged, Date Repaired, Date Put Back in Service, Review Completed by, Comments, TA Approved: Yes Denied, Date.

Mail to the Appropriate KCC Conservation Office:

Table with 2 columns: Office Address, Phone. Rows for KCC District Office #1, #2, #3, #4.

Group: MyWells Well: Swarner 1-9 (acquired on: 01/21/21 17:11:56)



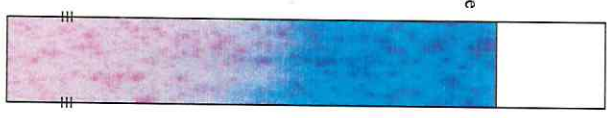
Liquid level calculated with user supplied Acoustic Velocity

Acoustic Velocity 1150 ft/s

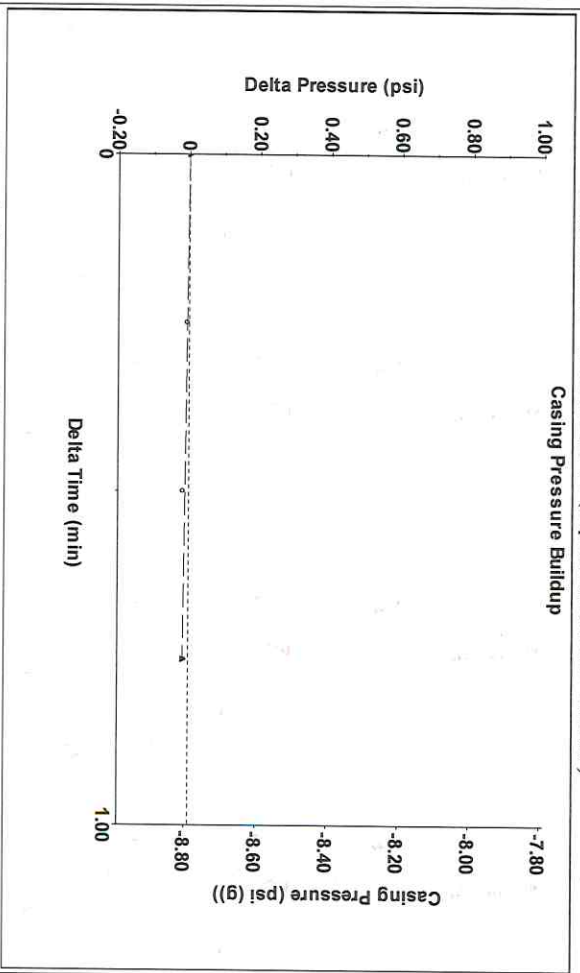
Analysis Method: Acoustic Velocity

Group: MyWells Well: Swarner 1-9 (acquired on: 01/21/21 17:11:56)

Production Current	Potential	Casing Pressure	Static
Oil - * -	- * - BBL/D	-8.8 psi (g)	Oil Column Height MD 0 ft
Water - * -	- * - BBL/D	Casing Pressure Buildup -0.016 psi	Water Column Height MD 4531 ft
Gas - * -	- * - Mscf/D	0.75 mth	
IPR Method	Vogel	Gas/Liquid Interface Pressure -8.7 psi (g)	
PBHP/SBHP	- * -		
Production Efficiency	0.0		
Oil 40 deg API		Liquid Level Depth 522.10 ft	
Water 1.05 Sp.Gr.H2O		Pump Intake Depth - * - ft	
Gas 0.85 Sp.Gr.AIR		Formation Depth 5058.50 ft	
Acoustic Velocity	1150 ft/s		Static BHP 2051.5 psi (g)



Group: MyWells Well: Swarner 1-9 (acquired on: 01/21/21 17:11:56)



Group: MyWells Well: Swarner 1-9 (acquired on: 01/21/21 17:11:56)

Entered Acoustic Velocity for Liquid Level depth determination

February 09, 2021

Shayne Hayes
Hayes Oil & Gas LLC
1081 W HWY 160
PO BOX 108
ATTICA, KS 67009-0108

Re: Temporary Abandonment
API 15-033-20681-00-00
SWARNER 1-9
SW/4 Sec.09-31S-18W
Comanche County, Kansas

Dear Shayne Hayes:

"Your temporary abandonment (TA) application for the well listed above has been approved. In accordance with K.A.R. 82-3-111 the TA status of this well will expire 02/09/2022.

- * If you return this well to service or plug it, please notify the District Office.
- * If you sell this well you are required to file a Transfer of Operator form, T-1.
- * If the well will remain temporarily abandoned, you must submit a new TA application, CP-111, before 02/09/2022.

You may contact me at the number above if you have questions.

Very truly yours,

Michael Maier"