

KANSAS CORPORATION COMMISSION
OIL & GAS CONSERVATION DIVISION

TEMPORARY ABANDONMENT WELL APPLICATION

OPERATOR: License#
Name:
Address 1:
Address 2:
City: State: Zip:
Contact Person:
Phone:
Contact Person Email:
Field Contact Person:
Field Contact Person Phone:

API No. 15-
Spot Description:
Sec. Twp. S. R.
GPS Location: Lat: Long:
Datum: NAD27 NAD83 WGS84
County: Elevation:
Lease Name: Well #:
Well Type: Oil Gas OG WSW Other:
SWD Permit #: ENHR Permit #:
Gas Storage Permit #:
Spud Date: Date Shut-In:

Table with 7 columns: Conductor, Surface, Production, Intermediate, Liner, Tubing. Rows include Size, Setting Depth, Amount of Cement, Top of Cement, Bottom of Cement.

Casing Fluid Level from Surface: How Determined? Date:
Casing Squeeze(s): to w / sacks of cement, to w / sacks of cement. Date:
Do you have a valid Oil & Gas Lease? Yes No
Depth and Type: Junk in Hole at Tools in Hole at Casing Leaks: Yes No Depth of casing leak(s):
Type Completion: ALT. I ALT. II Depth of: DV Tool: w / sacks of cement Port Collar: w / sack of cement
Packer Type: Size: Inch Set at: Feet
Total Depth: Plug Back Depth: Plug Back Method:

Geological Data:

Table with 4 columns: Formation Name, Formation Top, Formation Base, Completion Information. Rows 1 and 2.

UNDER PENALTY OF PERJURY I HEREBY ATTEST THAT THE INFORMATION CONTAINED HEREIN IS TRUE AND CORRECT TO THE BEST OF MY KNOWLEDGE

Submitted Electronically

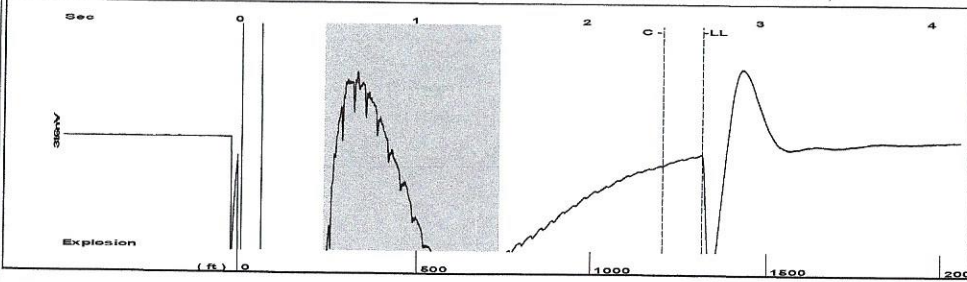
Do NOT Write in This Space - KCC USE ONLY
Date Tested: Results: Date Plugged: Date Repaired: Date Put Back in Service:
Review Completed by: Comments:
TA Approved: Yes Denied Date:

Mail to the Appropriate KCC Conservation Office:

Table with 2 columns: Office Address, Phone. Rows for District Office #1, #2, #3, #4.

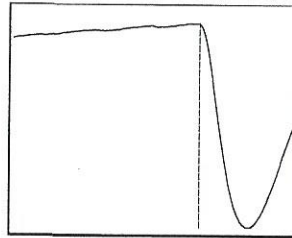
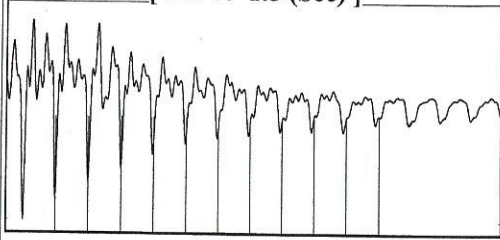


Group: Olmitz Area Well: Axman Demel Unit 1-24 (acquired on: 02/09/21 10:22:30)



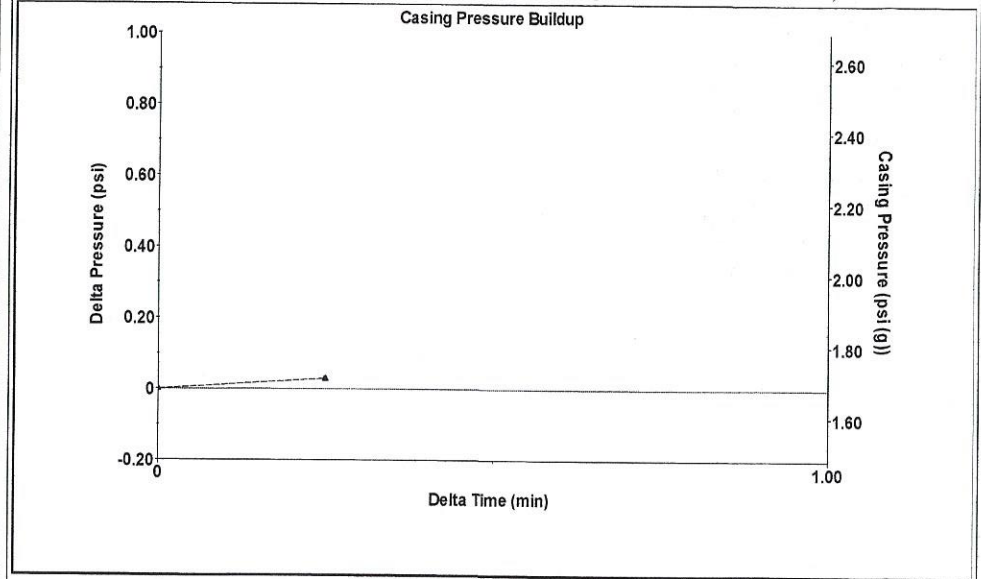
Filter Type High Pass Automatic Collar Count Yes Time 2.669 sec
 Manual Acoustic Velo 967.939 ft/s Manual JTS/sec 15.2672 Joints 41.4675 Jts
 Depth 1314.52 ft

[0.5 to 1.5 (Sec)]



Analysis Method: Automatic

Group: Olmitz Area Well: Axman Demel Unit 1-24 (acquired on: 02/09/21 10:22:30)



Change in Pressure 0.03 psi PT13440
 Range 0 - ? psi
 Change in Time 0.25 min

Group: Olmitz Area Well: Axman Demel Unit 1-24 (acquired on: 02/09/21 10:22:30)

Production
 Current Potential
 Oil - * - - * - BBL/D
 Water - * - - * - BBL/D
 Gas - * - - * - Mscf/D
 IPR Method Vogel
 PBHP/SBHP - * -
 Production Efficiency 0.0

Casing Pressure 1.7 psi (g)
 Casing Pressure Buildup 0.0 psi
 0.25 min
 Gas/Liquid Interface Pressure 2.4 psi (g)

Liquid Level Depth 1314.52 ft

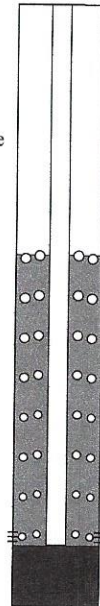
Pump Intake Depth 3320.00 ft
 Formation Depth 3264.00 ft

Oil 40 deg.API
 Water 1.05 Sp.Gr.H2O
 Gas 0.98 Sp.Gr.AIR

Acoustic Velocity 985.028 ft/s

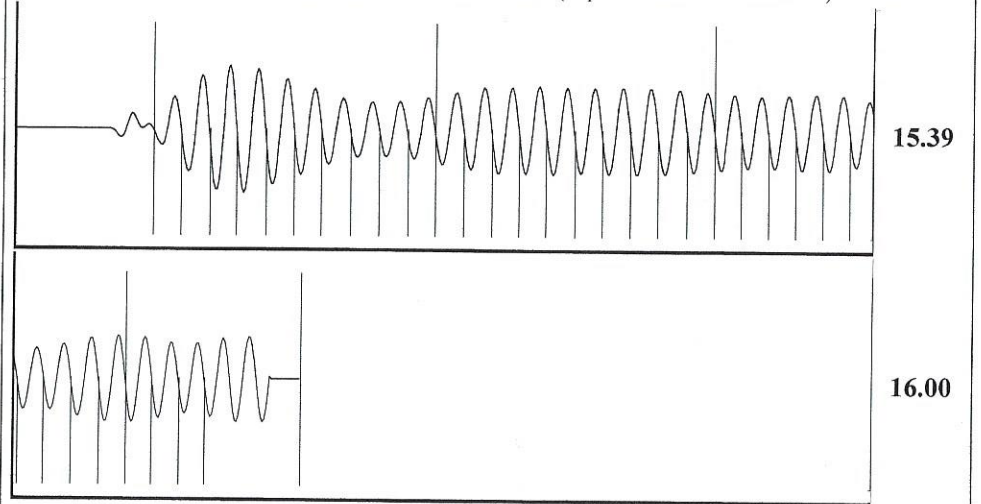
Formation Submergence
 Total Gaseous Liquid Column HT (TVD) 2005 ft
 Equivalent Gas Free Liquid HT (TVD) 1882 ft

Acoustic Test



Producing
 Annular Gas Flow 1 Mscf/D
 % Liquid 94 %
 Pump Intake 632.7 psi (g)
 Producing BHP 614.8 psi (g)
 Static BHP - * - psi (g)

Group: Olmitz Area Well: Axman Demel Unit 1-24 (acquired on: 02/09/21 10:22:30)



Acoustic Velocity 985.028 ft/s Joints counted 33
 Joints Per Second 15.5367 jts/sec Joints to liquid level 41.4675
 Depth to liquid level 1314.52 ft Filter Width 13.2672 17.2672
 Automatic Collar Count Yes Time to 1st Collar 0.32 2.444

Conservation Division
District Office No. 4
2301 E. 13th Street
Hays, KS 67601-2651



Phone: 785-261-6250
Fax: 785-625-0564
<http://kcc.ks.gov/>

Andrew J. French, Chairperson
Dwight D. Keen, Commissioner
Susan K. Duffy, Commissioner

Laura Kelly, Governor

February 15, 2021

Loveness Mpanje
F. G. Holl Company L.L.C.
9431 E CENTRAL STE 100
WICHITA, KS 67206-2563

Re: Temporary Abandonment
API 15-009-25057-00-00
AXMAN-DEMEL 1-24
W/2 Sec.24-17S-15W
Barton County, Kansas

Dear Loveness Mpanje:

"Your temporary abandonment (TA) application for the well listed above has been approved. In accordance with K.A.R. 82-3-111 the TA status of this well will expire 02/15/2022.

- * If you return this well to service or plug it, please notify the District Office.
- * If you sell this well you are required to file a Transfer of Operator form, T-1.
- * If the well will remain temporarily abandoned, you must submit a new TA application, CP-111, before 02/15/2022.

You may contact me at the number above if you have questions.

Very truly yours,

RICHARD WILLIAMS"