



**TRILOBITE TESTING, INC.**

# DRILL STEM TEST REPORT

Berexco, LLC  
 2020 N. Bramblewood  
 Wichita, KS 67206  
 ATTN: Jerry A. Smith

**9-11S-15W Russell, KS**

**Lebow #10**

Job Ticket: 65510

**DST#: 3**

Test Start: 2019.01.25 @ 20:44:51

## GENERAL INFORMATION:

Formation: **LKC "K"**  
 Deviated: No Whipstock: ft (KB)  
 Time Tool Opened: 22:29:42  
 Time Test Ended: 03:19:57  
 Interval: **3266.00 ft (KB) To 3298.00 ft (KB) (TVD)**  
 Total Depth: 3298.00 ft (KB) (TVD)  
 Hole Diameter: 7.88 inches Hole Condition: Fair  
 Test Type: Conventional Bottom Hole (Reset)  
 Tester: Brannan Lonsdale  
 Unit No: 73  
 Reference Elevations: 1942.00 ft (KB)  
 1935.00 ft (CF)  
 KB to GR/CF: 7.00 ft

**Serial #: 8700**

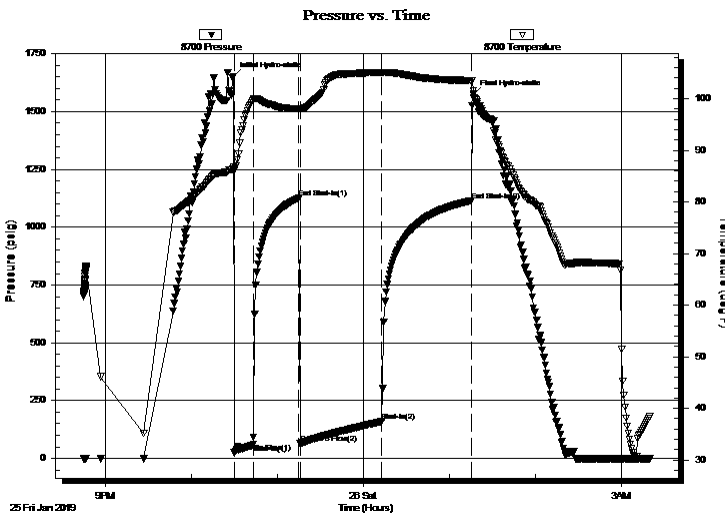
**Outside**

Press@RunDepth: 159.58 psig @ 3267.00 ft (KB)  
 Start Date: 2019.01.25 End Date: 2019.01.26  
 Start Time: 20:44:52 End Time: 03:19:57

Capacity: 8000.00 psig  
 Last Calib.: 2019.01.26  
 Time On Btm: 2019.01.25 @ 22:29:27  
 Time Off Btm: 2019.01.26 @ 01:16:42

**TEST COMMENT:** 15- IF- Slowly built to 10.81"  
 30- IS- No blow  
 60- FF- BOB 20mins. Built to 27.90"  
 60- FS- No blow

## PRESSURE SUMMARY



Time (Min.)	Pressure (psig)	Temp (deg F)	Annotation
0	1650.53	86.73	Initial Hydro-static
1	24.76	86.10	Open To Flow (1)
14	60.64	99.92	Shut-In(1)
46	1126.16	97.98	End Shut-In(1)
47	63.29	97.91	Open To Flow (2)
104	159.58	105.01	Shut-In(2)
166	1114.56	103.40	End Shut-In(2)
168	1573.93	100.87	Final Hydro-static

## Recovery

Length (ft)	Description	Volume (bbl)
256.00	MW, 20%M 80%W	3.63
32.00	OSM	0.45
3.00	CO	0.04

\* Recovery from multiple tests

## Gas Rates

Choke (inches)	Pressure (psig)	Gas Rate (Mcf/d)



**TRILOBITE TESTING, INC.**

# DRILL STEM TEST REPORT

Berexco, LLC

**9-11S-15W Russell, KS**

2020 N. Bramblewood  
Wichita, KS 67206

**Lebow #10**

Job Ticket: 65510

**DST#: 3**

ATTN: Jerry A. Smith

Test Start: 2019.01.25 @ 20:44:51

## GENERAL INFORMATION:

Formation: **LKC "K"**  
 Deviated: No Whipstock: ft (KB)  
 Time Tool Opened: 22:29:42  
 Time Test Ended: 03:19:57  
 Interval: **3266.00 ft (KB) To 3298.00 ft (KB) (TVD)**  
 Total Depth: 3298.00 ft (KB) (TVD)  
 Hole Diameter: 7.88 inches Hole Condition: Fair  
 Test Type: Conventional Bottom Hole (Reset)  
 Tester: Brannan Lonsdale  
 Unit No: 73  
 Reference Elevations: 1942.00 ft (KB)  
 1935.00 ft (CF)  
 KB to GR/CF: 7.00 ft

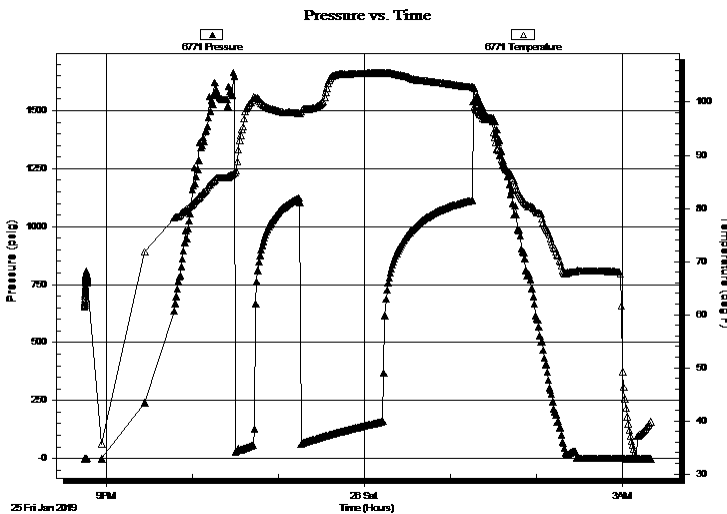
## Serial #: 6771

Inside

Press@RunDepth: psig @ 3267.00 ft (KB) Capacity: 8000.00 psig  
 Start Date: 2019.01.25 End Date: 2019.01.26 Last Calib.: 2019.01.26  
 Start Time: 20:44:47 End Time: 03:19:52 Time On Btm:  
 Time Off Btm:

TEST COMMENT: 15- IF- Slowly built to 10.81"  
 30- IS- No blow  
 60- FF- BOB 20mins. Built to 27.90"  
 60- FS- No blow

## PRESSURE SUMMARY



Time (Min.)	Pressure (psig)	Temp (deg F)	Annotation

## Recovery

Length (ft)	Description	Volume (bbl)
256.00	MW, 20%M 80%W	3.63
32.00	OSM	0.45
3.00	CO	0.04

## Gas Rates

Choke (inches)	Pressure (psig)	Gas Rate (Mcf/d)

\* Recovery from multiple tests



**TRILOBITE  
TESTING, INC.**

# DRILL STEM TEST REPORT

## FLUID SUMMARY

Berexco, LLC

**9-11S-15W Russell, KS**

2020 N. Bramblewood  
Wichita, KS 67206

**Lebow #10**

Job Ticket: 65510

**DST#: 3**

ATTN: Jerry A. Smith

Test Start: 2019.01.25 @ 20:44:51

### Mud and Cushion Information

Mud Type: Gel Chem

Cushion Type:

Oil API:

34 deg API

Mud Weight: 9.00 lb/gal

Cushion Length:

ft

Water Salinity:

20000 ppm

Viscosity: 60.00 sec/qt

Cushion Volume:

bbbl

Water Loss: 8.78 in<sup>3</sup>

Gas Cushion Type:

Resistivity: ohm.m

Gas Cushion Pressure:

psig

Salinity: 2000.00 ppm

Filter Cake: inches

### Recovery Information

Recovery Table

Length ft	Description	Volume bbl
256.00	MW, 20%M 80%W	3.629
32.00	OSM	0.454
3.00	CO	0.043

Total Length: 291.00 ft      Total Volume: 4.126 bbl

Num Fluid Samples: 0

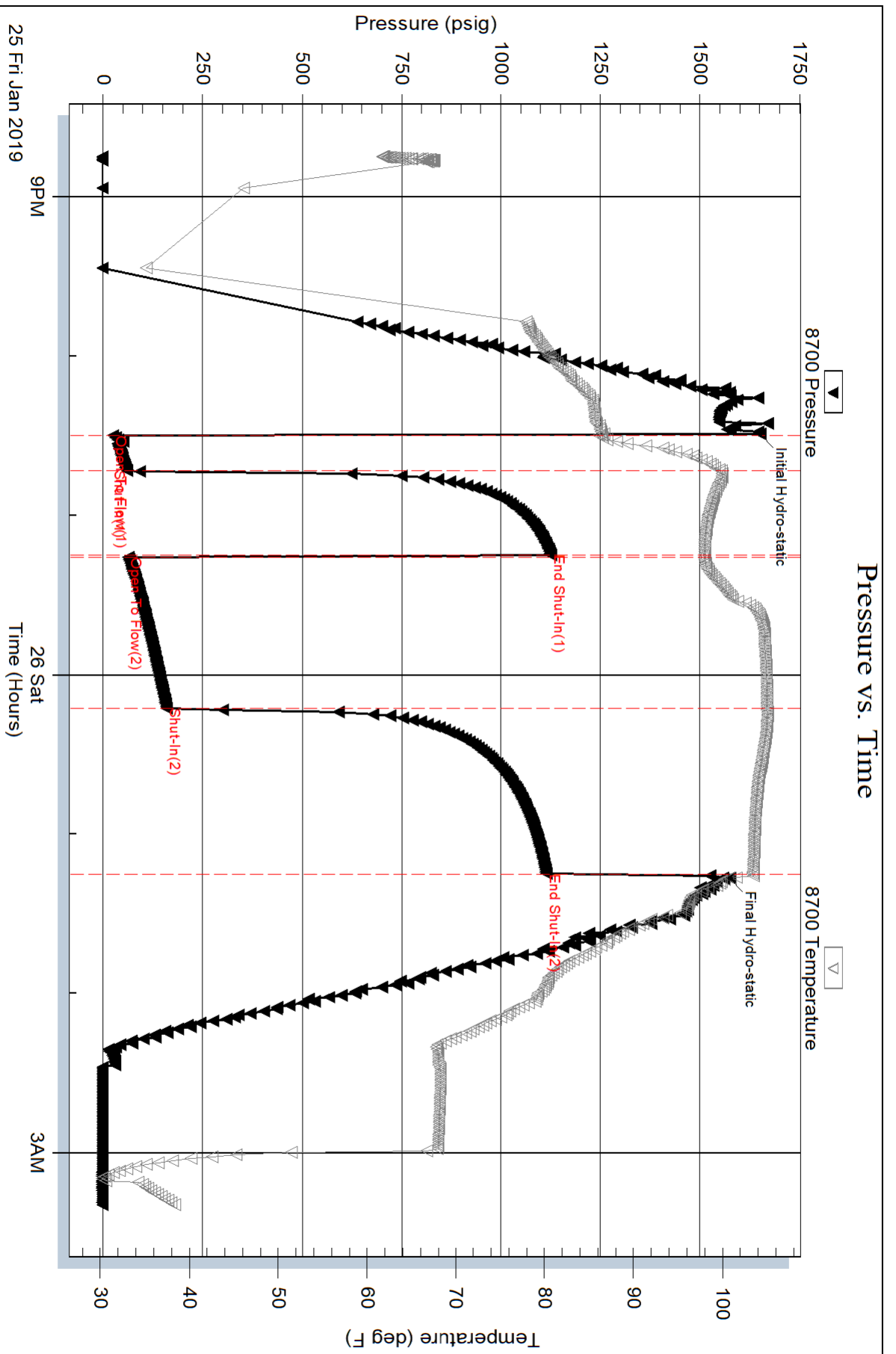
Num Gas Bombs: 0

Serial #:

Laboratory Name:

Laboratory Location:

Recovery Comments: RW: .46@51deg



Serial #: 6771

Inside

Berexco, LLC

Lebow #10

DST Test Number: 3

