

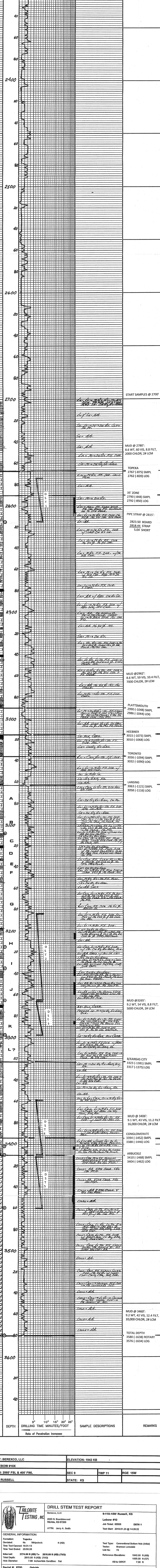
COMPNY: BERRECO, LLC
ELEVATIONS: 1942 KB
LEASE: LEBOW #10X
LOCATION: 2560' FSL & 405' FWL
COUNTY: RUSSELL
STATE: KS

DRILLING TIME IN MINUTES PER FOOT
Rate of Penetration Increases
DEPTH: 5' 10' 15' 20' 25'

DRILLING TIME IN MINUTES PER FOOT
Rate of Penetration Increases
DEPTH: 5' 10' 15' 20' 25'

LEGEND

--	--	--	--	--	--	--	--	--



COMPANY: BERRECO, LLC	ELEVATION: 1942 KB		
LEASE: LEBOW #10X	SEC 9	TWP 11	RGE 15W
LOCATION: 2560' FSL & 405' FWL	STATE: KS		

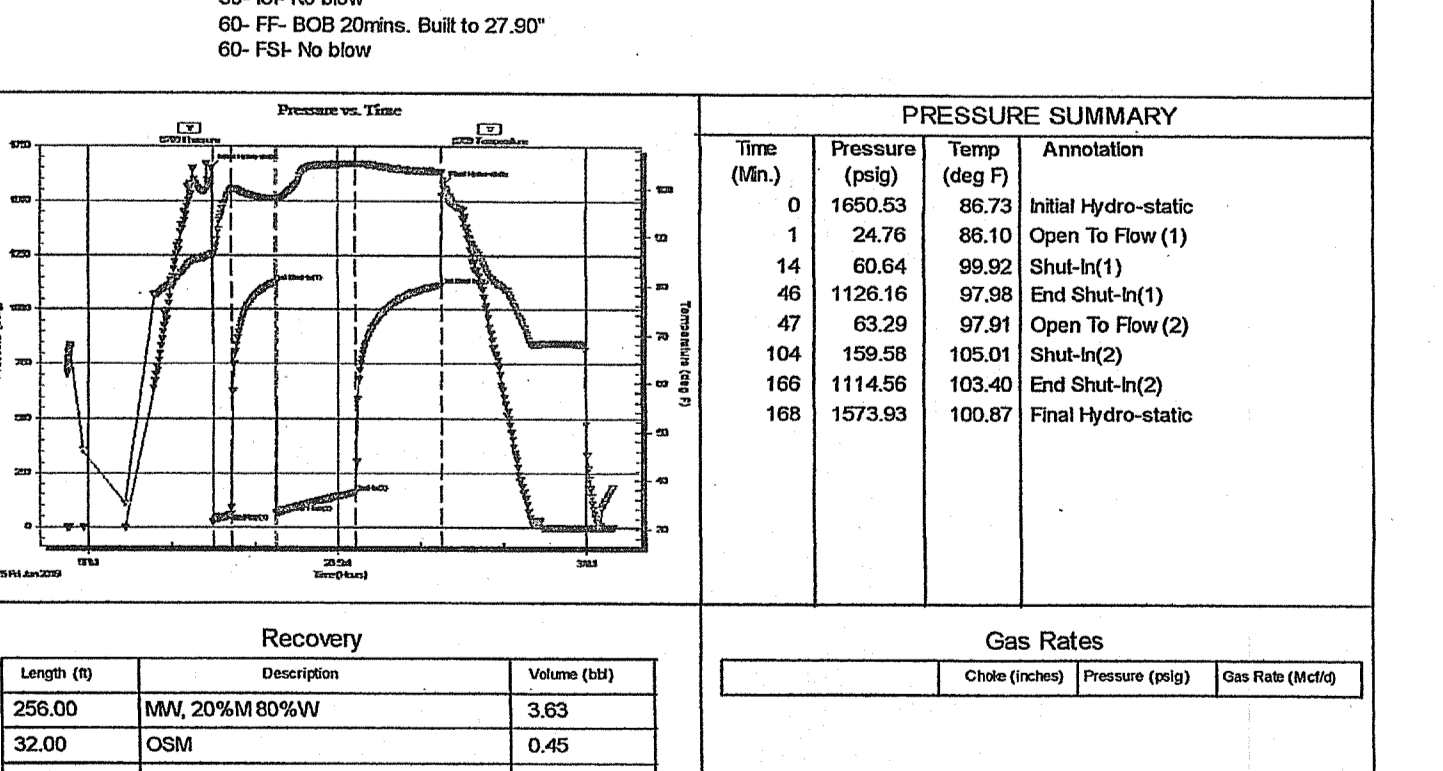
DRILL STEM TEST REPORT
Berreco, LLC
2020 N. Bramblewood Wichita, KS 67208
ATtn: Jerry A. Smith

9-11S-16W Russell, KS
Lebow #10
Job Ticket: 65008
DST#1
Test Start: 2019.01.23 @ 14:28:22

GENERAL INFORMATION:
Formation: Topeka
Deviated: No Whipstock: ft (KB)
Time Tool Opened: 20:52:42
Time Test Ended: 20:52:28
Interval: 2774.00 ft (KB) To 2815.00 ft (KB) (TV)
Total Depth: 2815.00 ft (KB) (TV)
Hole Diameter: 7.88 inches-Hole Condition: Fair

Serial #: 6700
Press@RunDepth: 57.04 psig @ 2775.00 ft (KB)
Start Date: 2019.01.23
Start Time: 20:52:42
End Date: 2019.01.23
End Time: 20:52:28

TEST COMMENT: 15'-F: Slowly built to 2.87"
30'-SI: No blow
60'-F: 80-90 Grains. Built to 7.67"
60'-FSI: No blow



Time (Min)	Pressure (psig)	Temp (deg F)	Annotation
0	1307.12	80.35	Initial Hydro-static
1	116.97	78.50	Open to Flow (1)
14	33.47	81.30	Shut-in(1)
47	640.74	82.84	End Shut-in(1)
48	37.58	82.81	Open to Flow (2)
104	57.04	85.13	Shut-in(2)
169	608.70	85.81	End Shut-in(2)
167	1311.78	87.01	Final Hydro-static

Length (ft)	Recovery	Volume (bbl)
60.00	Outside	0.30
20.00	WORM 20'WV 60'WV	0.38
20.00	OSM	0.38

Tribble Testing, Inc. Ref. No: 65508 Printed: 2019.01.23 @ 20:57:31

DRILL STEM TEST REPORT
Berreco, LLC
2020 N. Bramblewood Wichita, KS 67208
ATtn: Jerry A. Smith

9-11S-16W Russell, KS
Lebow #10
Job Ticket: 65009
DST#2
Test Start: 2019.01.23 @ 06:46:26

GENERAL INFORMATION:
Formation: LMG "K"
Deviated: No Whipstock: ft (KB)
Time Tool Opened: 22:29:42
Time Test Ended: 14:39:17
Interval: 3184.00 ft (KB) To 3285.00 ft (KB) (TV)
Total Depth: 3285.00 ft (KB) (TV)
Hole Diameter: 7.88 inches-Hole Condition: Fair

Serial #: 6700
Press@RunDepth: 91.62 psig @ 3185.00 ft (KB)
Start Date: 2019.01.23
Start Time: 22:29:42
End Date: 2019.01.23
End Time: 14:39:17

TEST COMMENT: 15'-F: Slowly built to 5.73"
30'-SI: No blow
60'-F: 80-90 Grains. Built to 13.71"
60'-FSI: Slowly built to 0.78"

Time (Min)	Pressure (psig)	Temp (deg F)	Annotation
0	1627.03	84.65	Initial Hydro-static
1	24.63	84.63	Open to Flow (1)
15	44.49	85.30	Shut-in(1)
48	674.51	86.26	End Shut-in(1)
49	1126.16	87.98	Open to Flow (2)
104	93.29	87.91	Shut-in(2)
104	159.59	105.01	Shut-in(2)
166	1114.56	103.40	End Shut-in(2)
155	1578.19	103.20	Final Hydro-static

Length (ft)	Recovery	Volume (bbl)
256.00	MMV 20'WV 60'WV	3.63
32.00	OSM	0.45
3.00	CO	0.03

Tribble Testing, Inc. Ref. No: 65509 Printed: 2019.01.23 @ 14:47:43

DRILL STEM TEST REPORT
Berreco, LLC
2020 N. Bramblewood Wichita, KS 67208
ATtn: Jerry A. Smith

9-11S-16W Russell, KS
Lebow #10
Job Ticket: 65011
DST#4
Test Start: 2019.01.26 @ 10:00:00

GENERAL INFORMATION:
Formation: Conglomerate Sand
Deviated: No Whipstock: ft (KB)
Time Tool Opened: 18:40:08
Time Test Ended: 22:56:06
Interval: 3358.00 ft (KB) To 3410.00 ft (KB) (TV)
Total Depth: 3410.00 ft (KB) (TV)
Hole Diameter: 7.88 inches-Hole Condition: Fair

Serial #: 6700
Press@RunDepth: 25.01 psig @ 3410.00 ft (KB)
Start Date: 2019.01.26
Start Time: 18:40:08
End Date: 2019.01.26
End Time: 22:56:06

TEST COMMENT: 15'-F: Slowly built to 0.93"
30'-SI: No blow
60'-F: BCR 1mm. Built to 151.89"
45'-FSI: No blow

Time (Min)	Pressure (psig)	Temp (deg F)	Annotation
0	1677.28	85.38	Initial Hydro-static
1	20.10	84.89	Open to Flow (1)
14	21.88	85.73	Shut-in(1)
48	713.21	87.12	End Shut-in(1)
49	1126.16	87.98	Open to Flow (2)
104	93.29	87.91	Shut-in(2)
104	159.59	105.01	Shut-in(2)
166	1114.56	103.40	End Shut-in(2)
155	1578.19	103.20	Final Hydro-static

Length (ft)	Recovery	Volume (bbl)
10.00	OSM	0.14
2.00	CO	0.03

Tribble Testing, Inc. Ref. No: 65511 Printed: 2019.01.26 @ 23:05:41

DRILL STEM TEST REPORT
Berreco, LLC
2020 N. Bramblewood Wichita, KS 67208
ATtn: Jerry A. Smith

9-11S-16W Russell, KS
Lebow #10
Job Ticket: 65012
DST#5
Test Start: 2019.01.27 @ 05:11:29

GENERAL INFORMATION:
Formation: Anhydrite
Deviated: No Whipstock: ft (KB)
Time Tool Opened: 07:44:05
Time Test Ended: 11:38:05
Interval: 3419.00 ft (KB) To 3480.00 ft (KB) (TV)
Total Depth: 3480.00 ft (KB) (TV)
Hole Diameter: 7.88 inches-Hole Condition: Poor

Serial #: 6700
Press@RunDepth: 782.66 psig @ 3413.00 ft (KB)
Start Date: 2019.01.27
Start Time: 05:11:29
End Date: 2019.01.27
End Time: 11:38:05

TEST COMMENT: 15'-F: BCR 30secs. Built to 137.40"
30'-SI: No blow
60'-F: BCR 1mm. Built to 151.89"
45'-FSI: No blow

Time (Min)	Pressure (psig)	Temp (deg F)	Annotation
0	1705.76	89.56	Initial Hydro-static
1	178.40	89.31	Open to Flow (1)
16	472.63	100.10	Shut-in(1)
45	1021.33	100.20	End Shut-in(1)
46	514.53	105.00	Open to Flow (2)
47	782.66	108.69	End Shut-in(2)
100	1000.86	105.24	End Shut-in(2)
121	1645.20	105.78	Final Hydro-static

Length (ft)	Recovery	Volume (bbl)
1152.00	OSM 9% 105M 89%W	16.33
384.00	WORM 20'WV 60'WV 75%W	5.44
160.00	M	2.27

Tribble Testing, Inc. Ref. No: 65512 Printed: 2019.01.27 @ 11:45:02