

KANSAS CORPORATION COMMISSION
OIL & GAS CONSERVATION DIVISION

TEMPORARY ABANDONMENT WELL APPLICATION

OPERATOR: License#
Name:
Address 1:
Address 2:
City: State: Zip:
Contact Person:
Phone:
Contact Person Email:
Field Contact Person:
Field Contact Person Phone:

API No. 15-
Spot Description:
Sec. Twp. S. R.
GPS Location: Lat: Long:
Datum: NAD27 NAD83 WGS84
County: Elevation:
Lease Name: Well #:
Well Type: Oil Gas OG WSW Other:
SWD Permit #: ENHR Permit #:
Gas Storage Permit #:
Spud Date: Date Shut-In:

Table with 7 columns: Conductor, Surface, Production, Intermediate, Liner, Tubing. Rows include Size, Setting Depth, Amount of Cement, Top of Cement, Bottom of Cement.

Casing Fluid Level from Surface: How Determined? Date:
Casing Squeeze(s): to w / sacks of cement, to w / sacks of cement. Date:
Do you have a valid Oil & Gas Lease? Yes No
Depth and Type: Junk in Hole at Tools in Hole at Casing Leaks: Yes No Depth of casing leak(s):
Type Completion: ALT. I ALT. II Depth of: DV Tool: w / sacks of cement Port Collar: w / sack of cement
Packer Type: Size: Inch Set at: Feet
Total Depth: Plug Back Depth: Plug Back Method:

Geological Data:

Table with 4 columns: Formation Name, Formation Top, Formation Base, Completion Information. Rows 1 and 2.

UNDER PENALTY OF PERJURY I HEREBY ATTEST THAT THE INFORMATION CONTAINED HEREIN IS TRUE AND CORRECT TO THE BEST OF MY KNOWLEDGE

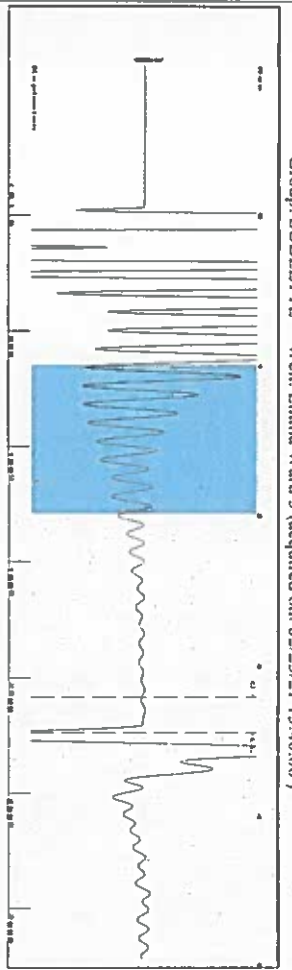
Submitted Electronically

Form with fields: Do NOT Write in This Space - KCC USE ONLY, Date Tested, Results, Date Plugged, Date Repaired, Date Put Back in Service, Review Completed by, Comments, TA Approved: Yes Denied, Date.

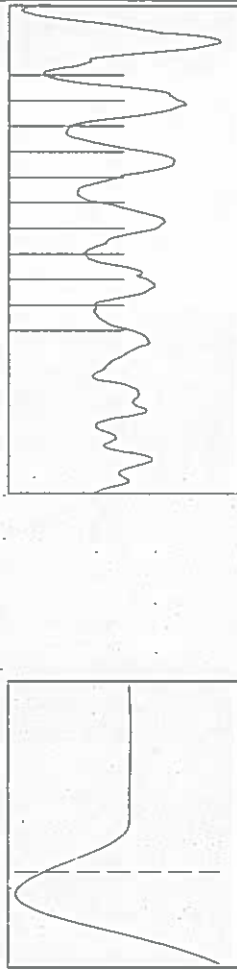
Mail to the Appropriate KCC Conservation Office:

Table with 2 columns: Office Address, Phone. Rows for KCC District Office #1, #2, #3, #4.

Group: SUBLETTE Well: Emma Ward 3 (acquired on: 02/25/21 15:40:06)



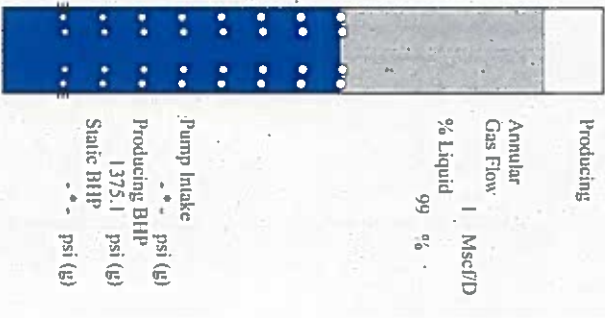
Filter Type High Pass Automatic Collar Count Yes
 Manual Acoustic Velo 207.62 ft/s Manual JTS/sec 19.0476
 Time 3.448 sec
 Joints 70.6217 Jts
 Depth 2238.71 ft



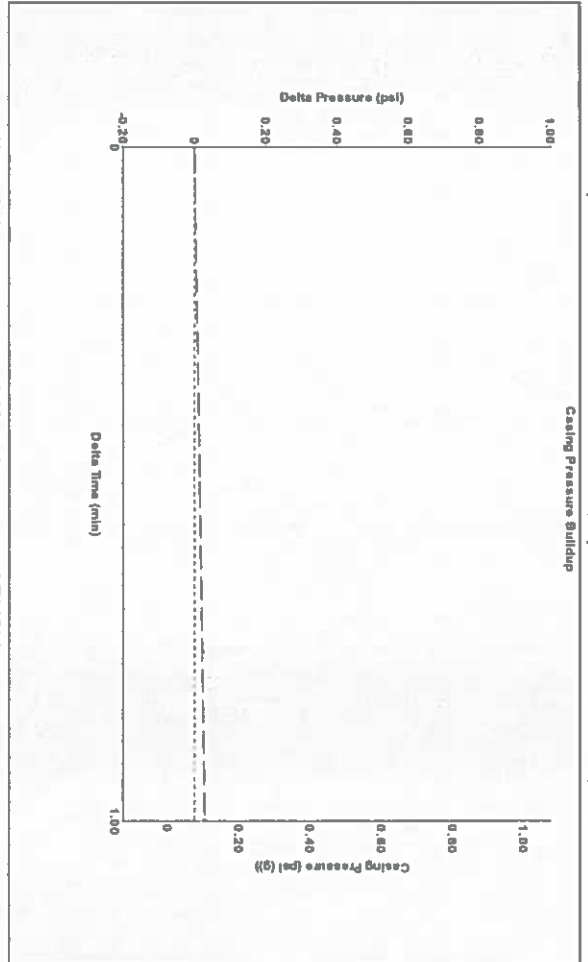
Analysis Method: Automatic

Group: SUBLETTE Well: Emma Ward 3 (acquired on: 02/25/21 15:40:06)

Production	Potential	Casing Pressure	Producing
Oil -	BBL/D	0.1 psi (g)	Annular
Water -	BBL/D	Casing Pressure Buildup	Gas Flow
Gas -	Mscf/D	0.0 psi	% Liquid
IPR Method	Vogel	Gas/Liquid Interface Pressure	
PBHP/SBHP		1.00 min	
Production Efficiency		0.9 psi (g)	
Oil 40 deg API		Liquid Level Depth	
Water 1.05 Sp.Gr:H2O		2238.71 ft	
Gas 0.69 Sp.Gr:AIR		Pump Intake Depth	
Acoustic Velocity		5280.00 ft	
		Formation Depth	
		3041 ft	
		Equivalent Gas Free Liquid HIT (TVD)	
		3022 ft	
		Formation Submergence	
		3041 ft	
		Total Gasous Liquid Column HIT (TVD)	
		3022 ft	
		Equivalent Gas Free Liquid HIT (TVD)	
		3022 ft	

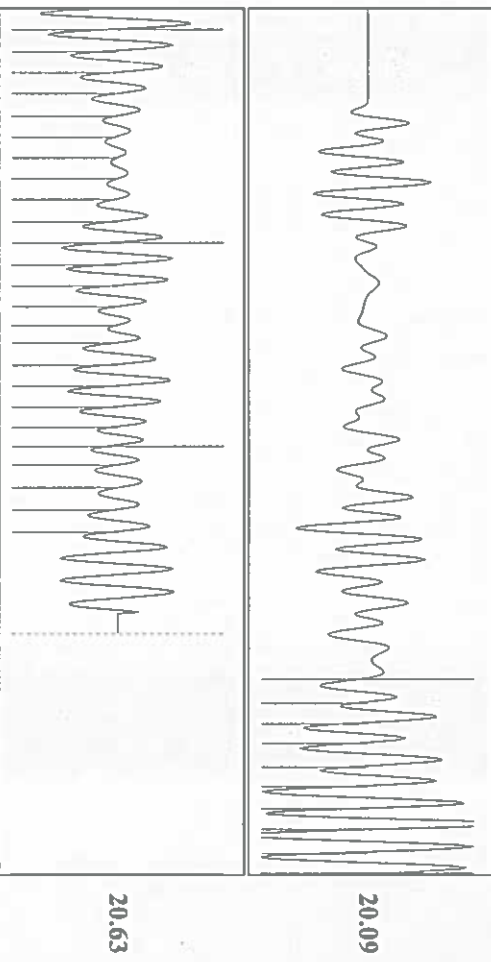


Group: SUBLETTE Well: Emma Ward 3 (acquired on: 02/25/21 15:40:06)



Change in Pressure 0.03 psi
 Change in Time 1.00 min
 PTI6716
 Range 0 - ? psi

Group: SUBLETTE Well: Emma Ward 3 (acquired on: 02/25/21 15:40:06)



Acoustic Velocity 1298.55 ft/s
 Joints Per Second 20.4819 Jts/sec
 Depth to liquid level 2238.71 ft
 Automatic Collar Count Yes
 Joints counted 34
 Filler Width 70.6217
 Time to 1st Collar 1.552

March 04, 2021

Katherine McClurkan
Merit Energy Company, LLC
13727 Noel Road, Suite 1200
Dallas, Texas 75240-7362

Re: Temporary Abandonment
API 15-081-22194-00-00
Emma Ward 3
NW/4 Sec.35-27S-34W
Haskell County, Kansas

Dear Katherine McClurkan:

"Your temporary abandonment (TA) application for the well listed above has been approved. In accordance with K.A.R. 82-3-111 the TA status of this well will expire 03/04/2022.

- * If you return this well to service or plug it, please notify the District Office.
- * If you sell this well you are required to file a Transfer of Operator form, T-1.
- * If the well will remain temporarily abandoned, you must submit a new TA application, CP-111, before 03/04/2022.

You may contact me at the number above if you have questions.

Very truly yours,

Michael Maier"