

KANSAS CORPORATION COMMISSION
OIL & GAS CONSERVATION DIVISION

TEMPORARY ABANDONMENT WELL APPLICATION

OPERATOR: License#
Name:
Address 1:
Address 2:
City: State: Zip:
Contact Person:
Phone:
Contact Person Email:
Field Contact Person:
Field Contact Person Phone:

API No. 15-
Spot Description:
Sec. Twp. S. R.
GPS Location: Lat: Long:
Datum: NAD27 NAD83 WGS84
County: Elevation:
Lease Name: Well #:
Well Type: Oil Gas OG WSW Other:
SWD Permit #: ENHR Permit #:
Gas Storage Permit #:
Spud Date: Date Shut-In:

Table with 7 columns: Conductor, Surface, Production, Intermediate, Liner, Tubing. Rows include Size, Setting Depth, Amount of Cement, Top of Cement, Bottom of Cement.

Casing Fluid Level from Surface: How Determined? Date:
Casing Squeeze(s): to w / sacks of cement, to w / sacks of cement. Date:
Do you have a valid Oil & Gas Lease? Yes No
Depth and Type: Junk in Hole at Tools in Hole at Casing Leaks: Yes No Depth of casing leak(s):
Type Completion: ALT. I ALT. II Depth of: DV Tool: w / sacks of cement Port Collar: w / sack of cement
Packer Type: Size: Inch Set at: Feet
Total Depth: Plug Back Depth: Plug Back Method:

Geological Data:

Table with 4 columns: Formation Name, Formation Top, Formation Base, Completion Information. Rows 1 and 2.

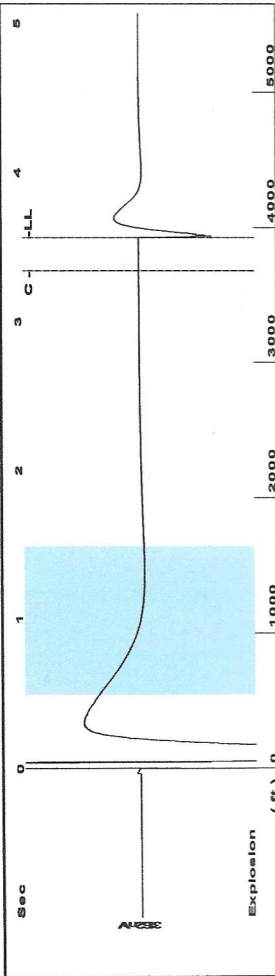
UNDER PENALTY OF PERJURY I HEREBY ATTEST THAT THE INFORMATION CONTAINED HEREIN IS TRUE AND CORRECT TO THE BEST OF MY KNOWLEDGE

Submitted Electronically

Do NOT Write in This Space - KCC USE ONLY
Date Tested: Results: Date Plugged: Date Repaired: Date Put Back in Service:
Review Completed by: Comments:
TA Approved: Yes Denied Date:

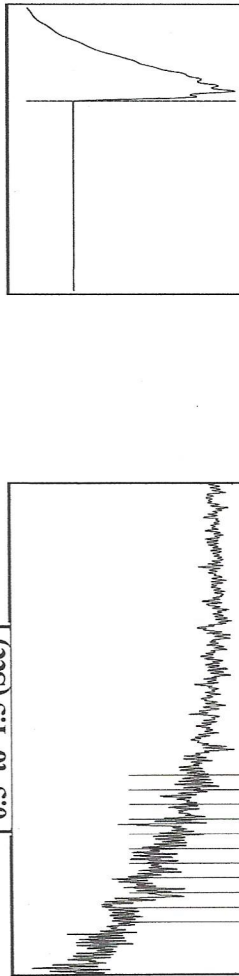
Mail to the Appropriate KCC Conservation Office:

Table with 2 columns: Office Address, Phone. Rows for District Office #1, #2, #3, #4.



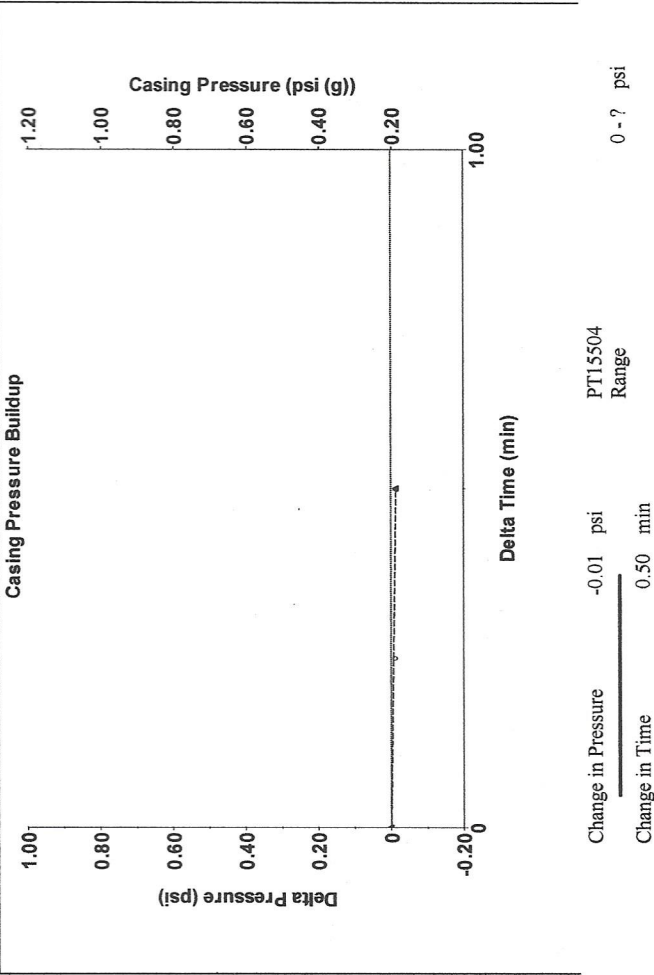
Filter Type High Pass Automatic Collar Count Yes Time 3.566 sec
 Manual Acoustic Velocity 2113.33 ft/s Manual JTS/sec 33.3333 Joints 123.884 Jts
 Depth 3927.12 ft

[0.5 to 1.5 (Sec)]

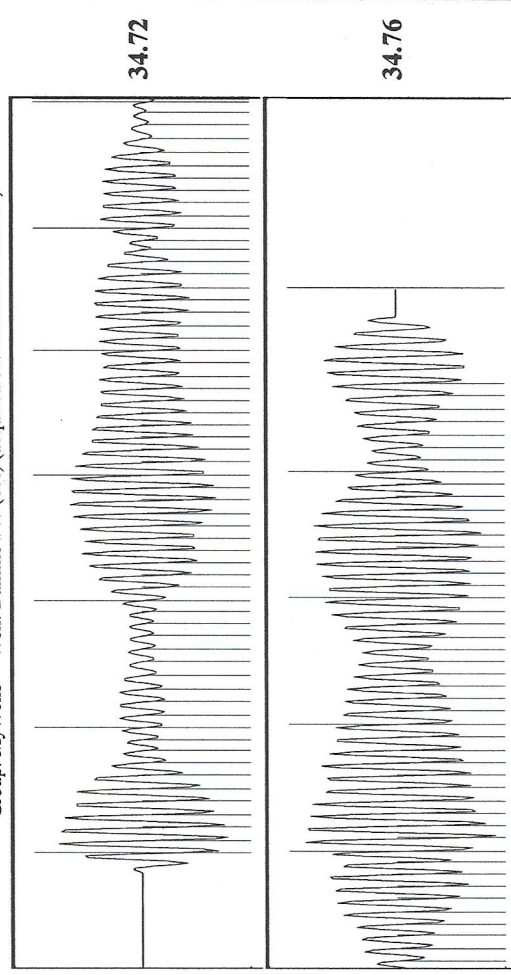


Analysis Method: Automatic

Production Current	Potential	Casing Pressure	Producing
Oil 0	- * - BBL/D	0.2 psi (g)	Annular
Water 0	- * - BBL/D	Casing Pressure Buildup	Gas Flow
Gas 0.0	- * - Mscf/D	-0.014 psi	% Liquid
IPR Method	Vogel	0.50 min	100 %
PBHP/SBHP	- * -	Gas/Liquid Interface Pressure	
Production Efficiency	0.0	1.3 psi (g)	
Oil 39 deg API		Liquid Level Depth	
Water 1.05 Sp.Gr.H2O		3927.12 ft	
Gas 0.55 Sp.Gr.AIR		Tubing Intake Depth	
Acoustic Velocity	2202.53 ft/s	- * - ft	
		Formation Depth	
		4317.00 ft	
Formation Submergence			
Total Gaseous Liquid Column HT (TVD)	390 ft		
Equivalent Gas Free Liquid HT (TVD)	390 ft		
Acoustic Test			



Change in Pressure -0.01 psi PT15504 Range
 Change in Time 0.50 min



Acoustic Velocity 2202.53 ft/s Joints counted 107
 Joints Per Second 34.7403 jts/sec Joints to liquid level 123.884
 Depth to liquid level 3927.12 ft Filter Width 31.3333
 Automatic Collar Count Yes Time to 1st Collar 0.264

March 04, 2021

Kent Strube
Hartman Oil Co., Inc.
10500 E BERKELEY SQ PKWY STE 100
WICHITA, KS 67206

Re: Temporary Abandonment
API 15-055-22070-00-01
DAMME 40
SE/4 Sec.21-22S-33W
Finney County, Kansas

Dear Kent Strube:

"Your temporary abandonment (TA) application for the well listed above has been approved. In accordance with K.A.R. 82-3-111 the TA status of this well will expire 03/04/2022.

- * If you return this well to service or plug it, please notify the District Office.
- * If you sell this well you are required to file a Transfer of Operator form, T-1.
- * If the well will remain temporarily abandoned, you must submit a new TA application, CP-111, before 03/04/2022.

You may contact me at the number above if you have questions.

Very truly yours,

Michael Maier"