

KANSAS CORPORATION COMMISSION
OIL & GAS CONSERVATION DIVISION

TEMPORARY ABANDONMENT WELL APPLICATION

OPERATOR: License#
Name:
Address 1:
Address 2:
City: State: Zip:
Contact Person:
Phone:
Contact Person Email:
Field Contact Person:
Field Contact Person Phone:

API No. 15-
Spot Description:
Sec. Twp. S. R.
GPS Location: Lat: Long:
Datum: NAD27 NAD83 WGS84
County: Elevation:
Lease Name: Well #:
Well Type: Oil Gas OG WSW Other:
SWD Permit #: ENHR Permit #:
Gas Storage Permit #:
Spud Date: Date Shut-In:

Table with 7 columns: Conductor, Surface, Production, Intermediate, Liner, Tubing. Rows include Size, Setting Depth, Amount of Cement, Top of Cement, Bottom of Cement.

Casing Fluid Level from Surface: How Determined? Date:
Casing Squeeze(s): to w / sacks of cement, to w / sacks of cement. Date:
Do you have a valid Oil & Gas Lease? Yes No
Depth and Type: Junk in Hole at Tools in Hole at Casing Leaks: Yes No Depth of casing leak(s):
Type Completion: ALT. I ALT. II Depth of: DV Tool: w / sacks of cement Port Collar: w / sack of cement
Packer Type: Size: Inch Set at: Feet
Total Depth: Plug Back Depth: Plug Back Method:

Geological Data:

Table with 4 columns: Formation Name, Formation Top, Formation Base, Completion Information. Rows 1 and 2.

UNDER PENALTY OF PERJURY I HEREBY ATTEST THAT THE INFORMATION CONTAINED HEREIN IS TRUE AND CORRECT TO THE BEST OF MY KNOWLEDGE

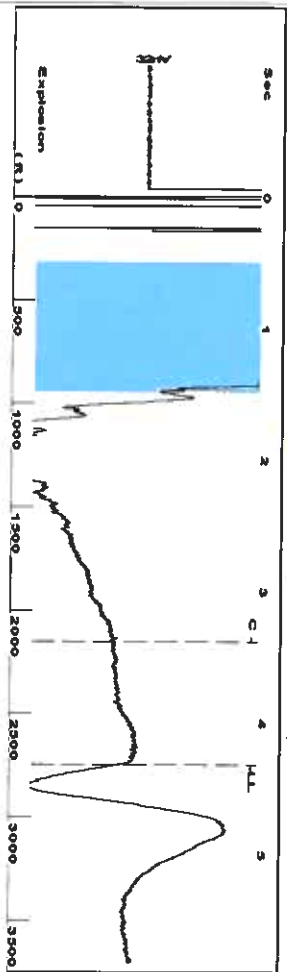
Submitted Electronically

Do NOT Write in This Space - KCC USE ONLY
Date Tested: Results: Date Plugged: Date Repaired: Date Put Back in Service:
Review Completed by: Comments:
TA Approved: Yes Denied Date:

Mail to the Appropriate KCC Conservation Office:

Table with 2 columns: Office Address, Phone. Rows for District Office #1, #2, #3, #4.

Group: TAD Well: Ingles A-2 (acquired on 02/26/21 13:38:23)



Filter Type High Pass
 Manual Acoustic Veloc 1257.94 ft/s
 Automatic Collar Count Yes
 Manual JTS/sec 19.8413
 Time 4.321 sec
 Joints 86.6436 Jts
 Depth 2746.60 ft



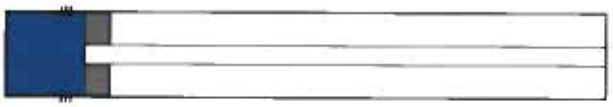
Analysis Method: Automatic

Group: TAD Well: Ingles A-2 (acquired on 02/26/21 13:38:23)

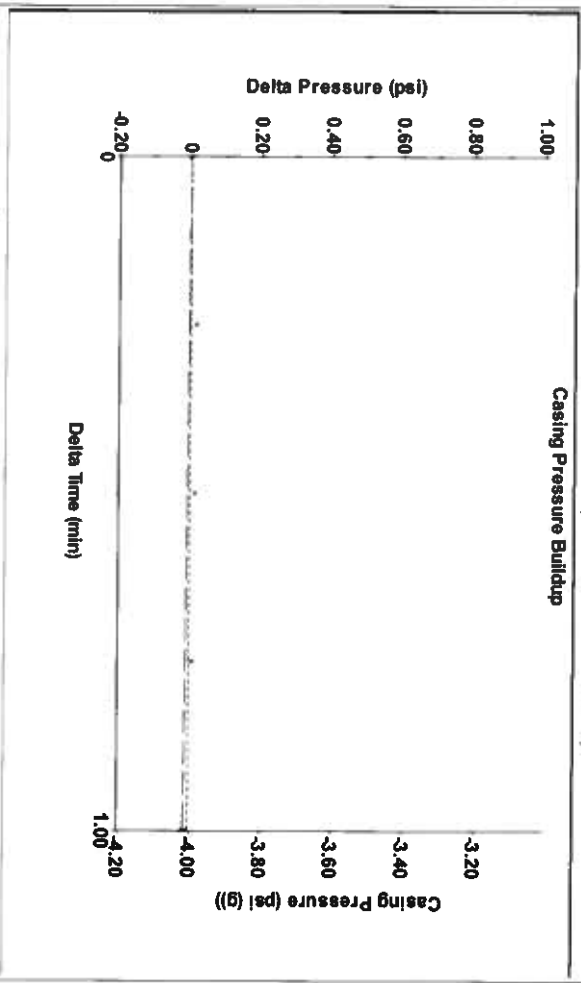
Production	Potential	Casing Pressure	Producing
Oil -*- Water -*- Gas -*-	-*- BBL/D -*- BBL/D -*- Mscf/D	-4.0 psi (g) Casing Pressure Buildup -0.0 psi	Annular Gas Flow 0 Mscf/D % Liquid 100 %
IPR Method PBHP/SBHP Production Efficiency 0.0	Vogel -*- -*-	Gas/Liquid Interface Pressure -3.3 psi (g)	Liquid Stream Below Tubing Oil 0 % Water 100 %
Oil 40 deg API Water 1.05 Sp Gr H2O Gas 0.73 Sp Gr AIR	Liquid Level Depth 2746.60 ft	Liquid Below Tubing 100 %	Pump Intake 51.9 psi (g) Producing BHP 106.0 psi (g) Static BHP - *- psi (g)
Acoustic Velocity 1271.28 ft/s	Pump Intake Depth 2909.00 ft Formation Depth 3028.00 ft		

Formation Submergence
 Total Gaseous Liquid Column HT (TVD)
 Equivalent Gas Free Liquid HT (TVD)

162 ft
 162 ft

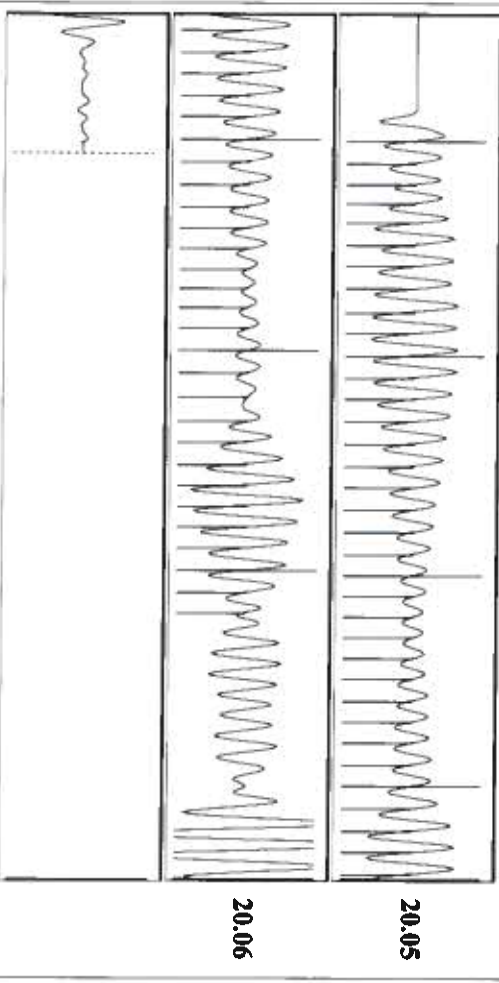


Group: TAD Well: Ingles A-2 (acquired on 02/26/21 13:38:23)



Change in Pressure -0.01 psi
 Change in Time 1.00 min
 PT14654
 Range 0.2 psi

Group: TAD Well: Ingles A-2 (acquired on 02/26/21 13:38:23)



Acoustic Velocity 1271.28 ft/s
 Joints Per Second 20.0517 Jts/sec
 Depth to liquid level 2746.6 ft
 Automatic Collar Count Yes

Joints counted 62
 Joints to liquid level 86.6436
 Filter Width 17.8413
 Time to 1st Collar 3.384

March 04, 2021

Katherine McClurkan
Merit Energy Company, LLC
13727 Noel Road, Suite 1200
Dallas, TX 75240

Re: Temporary Abandonment
API 15-067-20526-00-00
Ingles A 2
SW/4 Sec.14-29S-36W
Grant County, Kansas

Dear Katherine McClurkan:

"Your temporary abandonment (TA) application for the well listed above has been approved. In accordance with K.A.R. 82-3-111 the TA status of this well will expire 03/04/2022.

- * If you return this well to service or plug it, please notify the District Office.
- * If you sell this well you are required to file a Transfer of Operator form, T-1.
- * If the well will remain temporarily abandoned, you must submit a new TA application, CP-111, before 03/04/2022.

You may contact me at the number above if you have questions.

Very truly yours,

Michael Maier"