

KANSAS CORPORATION COMMISSION
OIL & GAS CONSERVATION DIVISION

Form must be Typed
Form must be signed

TEMPORARY ABANDONMENT WELL APPLICATION

All blanks must be complete

OPERATOR: License#
Name:
Address 1:
Address 2:
City: State: Zip:
Contact Person:
Phone:
Contact Person Email:
Field Contact Person:
Field Contact Person Phone:

API No. 15-
Spot Description:
Sec. Twp. S. R.
GPS Location: Lat: Long:
Datum: NAD27 NAD83 WGS84
County: Elevation:
Lease Name: Well #:
Well Type: Oil Gas OG WSW Other:
SWD Permit #: ENHR Permit #:
Gas Storage Permit #:
Spud Date: Date Shut-In:

Table with 7 columns: Conductor, Surface, Production, Intermediate, Liner, Tubing. Rows include Size, Setting Depth, Amount of Cement, Top of Cement, Bottom of Cement.

Casing Fluid Level from Surface: How Determined? Date:
Casing Squeeze(s): to w / sacks of cement, to w / sacks of cement. Date:
Do you have a valid Oil & Gas Lease? Yes No
Depth and Type: Junk in Hole at Tools in Hole at Casing Leaks: Yes No Depth of casing leak(s):
Type Completion: ALT. I ALT. II Depth of: DV Tool: w / sacks of cement Port Collar: w / sack of cement
Packer Type: Size: Inch Set at: Feet
Total Depth: Plug Back Depth: Plug Back Method:

Geological Data:

Table with 4 columns: Formation Name, Formation Top, Formation Base, Completion Information. Rows 1 and 2.

UNDER PENALTY OF PERJURY I HEREBY ATTEST THAT THE INFORMATION CONTAINED HEREIN IS TRUE AND CORRECT TO THE BEST OF MY KNOWLEDGE

Submitted Electronically

Do NOT Write in This Space - KCC USE ONLY
Date Tested: Results: Date Plugged: Date Repaired: Date Put Back in Service:
Review Completed by: Comments:
TA Approved: Yes Denied Date:

Mail to the Appropriate KCC Conservation Office:

Table with 3 columns: District Office, Address, Phone. Rows 1-4.

**General**

Well ID 126763  
 Well Charles 3306 3-28H  
 Company Sandridge Energy  
 Operator - \* -  
 Lease Name Charles 3306 3-28H  
 Elevation 1309.00 ft  
 Production Method Other  
 Dataset Description

Comment

**Surface Unit**

Manufacturer - \* -  
 Unit Class Conventional  
 Unit API Number - \* -  
 Measured Stroke Length 100.000 in  
 Rotation CW  
 Counter Balance Effect (Weights Level) - \* - Klb  
 Weight Of Counter Weights 2000 lb

**Prime Mover**

Motor Type Electric  
 Rated HP - \* - HP  
 Run Time 24 hr/day  
 MFG/Comment - \* -

**Electric Motor Parameters**

Rated Full Load AMPS - \* -  
 Rated Full Load RPM - \* -  
 Synchronous RPM 1200  
 Voltage - \* -  
 Hertz 60  
 Phase 3  
 Power Consumption 5  
 Power Demand 8 \$/KW

**Tubulars**

Tubing OD 2.785 in  
 Casing OD 7.000 in  
 Average Joint Length 31.700 ft  
 Anchor Depth - \* - ft  
 Kelly Bushing 20.00 ft

**Pump**

Plunger Diameter - \* - in  
 Pump Intake Depth 5052.00 ft  
 \*\*Total Rod Length < Pump Depth

**Polished Rod**

Polished Rod Diameter - \* - in

**Rod String**

	Top Taper	Taper 2	Taper 3	Taper 4	Taper 5	Taper 6
Rod Type	- * -	- * -	- * -	- * -	- * -	- * -
Rod Length	- * -	- * -	- * -	- * -	- * -	- * - ft
Rod Diameter	- * -	- * -	- * -	- * -	- * -	- * - in
Rod Weight	0.0	0.0	0.0	0.0	0.0	0.0 lb

Total Rod Length 0  
 Total Rod Weight 0.00

Damp Up 0.05  
 Damp Down 0.05

**Conditions**

**Pressure**

Static BHP 765.1 psi (g)  
 Static BHP Method Acoustic  
 Static BHP Date 03/11/2021

Producing BHP 570.1 psi (g)  
 Producing BHP Method Acoustic  
 Producing BHP Date 03/11/2020  
 Formation Depth 5201.00 ft

**Surface Producing Pressures**

Tubing Pressure - \* - psi (g)  
 Casing Pressure 337.8 psi (g)

**Casing Pressure Buildup**

Change in Pressure -0.103 psi  
 Over Change in Time 1.00 min

**Production**

Oil Production 0 BBL/D  
 Water Production 1 BBL/D  
 Gas Production - \* - Mscf/D  
 Production Date 08/12/2016

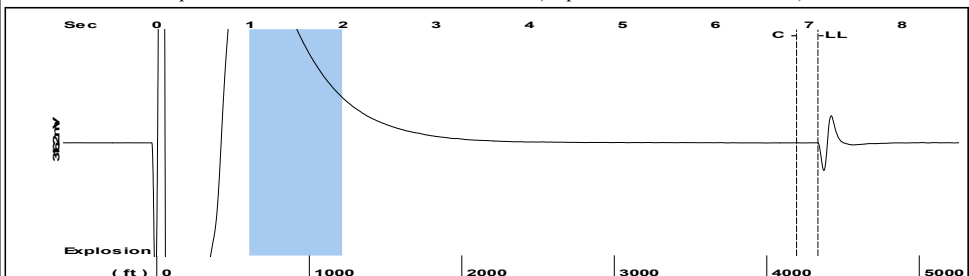
**Temperatures**

Surface Temperature 70 deg F  
 Bottomhole Temperature 150 deg F

**Fluid Properties**

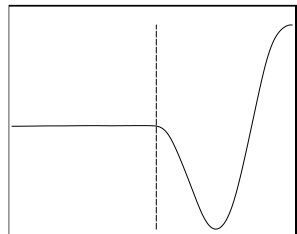
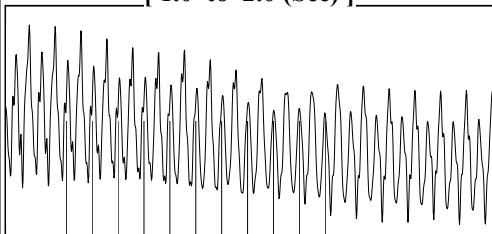
Oil API 40 deg.API  
 Water Specific Gravity 1.05 Sp.Gr.H2O

Group: 2021 March Well: Charles 3306 3-28H (acquired on: 03/11/21 12:04:03 )



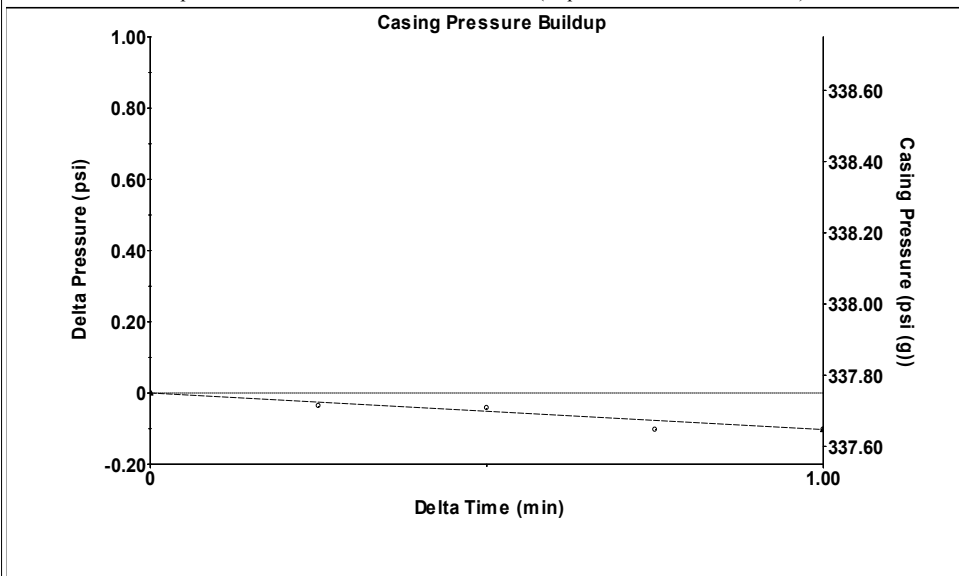
Filter Type High Pass Automatic Collar Count Yes Time 7.097 sec  
 Manual Acoustic Veloc 1191.73 ft/s Manual JTS/sec 18.797 Joints 136.746 Jts  
 Depth 4334.85 ft

[ 1.0 to 2.0 (Sec) ]



Analysis Method: Automatic

Group: 2021 March Well: Charles 3306 3-28H (acquired on: 03/11/21 12:04:03 )



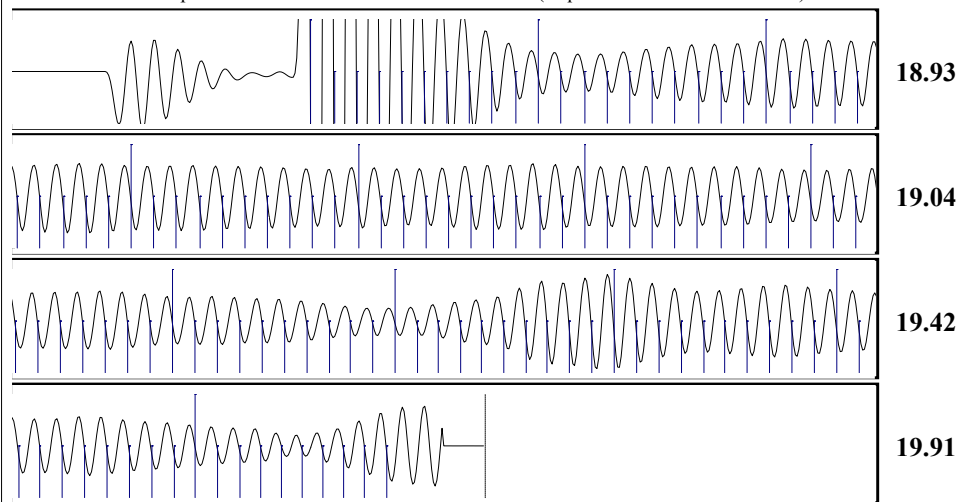
Change in Pressure -0.10 psi PT16722  
 Change in Time 1.00 min Range 0 - ? psi

Group: 2021 March Well: Charles 3306 3-28H (acquired on: 03/11/21 12:04:03 )

Production Current	Potential	Casing Pressure	Static
Oil 0	- * - BBL/D	337.8 psi (g)	Oil Column Height
Water 1	- * - BBL/D	Casing Pressure Buildup	MD 0 ft
Gas - * -	- * - Mscf/D	-0.103 psi	
		1.00 min	Water Column Height
IPR Method	Vogel	Gas/Liquid Interface Pressure	MD 846 ft
PBHP/SBHP	- * -	380.4 psi (g)	
Production Efficiency	0.0		Static BHP
		Liquid Level Depth	765.1 psi (g)
Oil 40 deg.API		4334.85 ft	
Water 1.05 Sp.Gr.H2O		Tubing Intake Depth	
Gas 0.73 Sp.Gr.AIR		5052.00 ft	
Acoustic Velocity	1221.6 ft/s	Formation Depth	
		5201.00 ft	

Charles 3306 3-28H

Group: 2021 March Well: Charles 3306 3-28H (acquired on: 03/11/21 12:04:03 )



Acoustic Velocity 1221.6 ft/s Joints counted 119  
 Joints Per Second 19.2681 jts/sec Joints to liquid level 136.746  
 Depth to liquid level 4334.85 ft Filter Width 16.797 20.797  
 Automatic Collar Count Yes Time to 1st Collar 0.692 6.868

Conservation Division  
District Office No. 2  
3450 N. Rock Road  
Building 600, Suite 601  
Wichita, KS 67226



Phone: 316-337-7400  
Fax: 316-630-4005  
<http://kcc.ks.gov/>

Andrew J. French, Chairperson  
Dwight D. Keen, Commissioner  
Susan K. Duffy, Commissioner

Laura Kelly, Governor

March 16, 2021

Collette Davis  
SandRidge Exploration and Production LLC  
1 E SHERIDAN AVE STE 500  
OKLAHOMA CITY, OK 73104-2494

Re: Temporary Abandonment  
API 15-077-22011-01-00  
CHARLES 3306 3-28H  
NE/4 Sec.33-33S-06W  
Harper County, Kansas

Dear Collette Davis:

"Your temporary abandonment (TA) application for the well listed above has been approved. In accordance with K.A.R. 82-3-111 the TA status of this well will expire 03/16/2022.

- \* If you return this well to service or plug it, please notify the District Office.
- \* If you sell this well you are required to file a Transfer of Operator form, T-1.
- \* If the well will remain temporarily abandoned, you must submit a new TA application, CP-111, before 03/16/2022.

You may contact me at the number above if you have questions.

Very truly yours,

Steve VanGieson"