

KANSAS CORPORATION COMMISSION
OIL & GAS CONSERVATION DIVISION

TEMPORARY ABANDONMENT WELL APPLICATION

OPERATOR: License# _____
 Name: _____
 Address 1: _____
 Address 2: _____
 City: _____ State: _____ Zip: _____ + _____
 Contact Person: _____
 Phone: (_____) _____
 Contact Person Email: _____
 Field Contact Person: _____
 Field Contact Person Phone: (_____) _____

API No. 15- _____
 Spot Description: _____
 _____ - _____ - _____ - _____ Sec. _____ Twp. _____ S. R. _____ E W
 _____ feet from N / S Line of Section
 _____ feet from E / W Line of Section
 GPS Location: Lat: _____, Long: _____
(e.g. xx.xxxxx) (e.g. -xxx.xxxxx)
 Datum: NAD27 NAD83 WGS84
 County: _____ Elevation: _____ GL KB
 Lease Name: _____ Well #: _____
 Well Type: (check one) Oil Gas OG WSW Other: _____
 SWD Permit #: _____ ENHR Permit #: _____
 Gas Storage Permit #: _____
 Spud Date: _____ Date Shut-In: _____

	Conductor	Surface	Production	Intermediate	Liner	Tubing
Size						
Setting Depth						
Amount of Cement						
Top of Cement						
Bottom of Cement						

Casing Fluid Level from Surface: _____ How Determined? _____ Date: _____
 Casing Squeeze(s): _____ to _____ w / _____ sacks of cement, _____ to _____ w / _____ sacks of cement. Date: _____
(top) (bottom) (top) (bottom)
 Do you have a valid Oil & Gas Lease? Yes No
 Depth and Type: Junk in Hole at _____ Tools in Hole at _____ Casing Leaks: Yes No Depth of casing leak(s): _____
(depth) (depth)
 Type Completion: ALT. I ALT. II Depth of: DV Tool: _____ w / _____ sacks of cement Port Collar: _____ w / _____ sack of cement
(depth) (depth)
 Packer Type: _____ Size: _____ Inch Set at: _____ Feet
 Total Depth: _____ Plug Back Depth: _____ Plug Back Method: _____

Geological Data:

Formation Name	Formation Top	Formation Base	Completion Information
1. _____	At: _____	to _____ Feet	Perforation Interval _____ to _____ Feet or Open Hole Interval _____ to _____ Feet
2. _____	At: _____	to _____ Feet	Perforation Interval _____ to _____ Feet or Open Hole Interval _____ to _____ Feet

UNDER PENALTY OF PERJURY I HEREBY ATTEST THAT THE INFORMATION CONTAINED HEREIN IS TRUE AND CORRECT TO THE BEST OF MY KNOWLEDGE

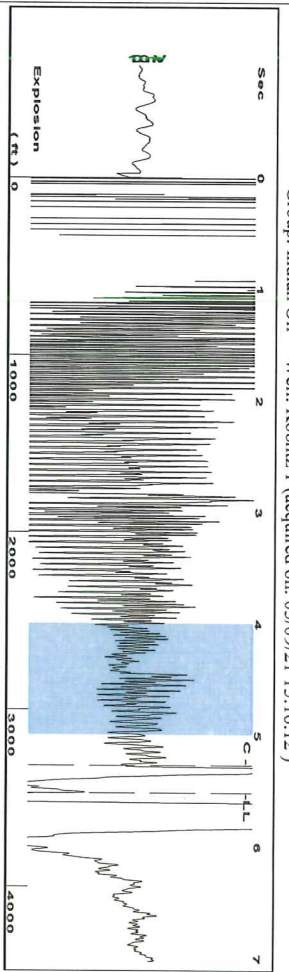
Submitted Electronically

Do NOT Write in This Space - KCC USE ONLY	Date Tested: _____	Results: _____	Date Plugged: _____	Date Repaired: _____	Date Put Back in Service: _____
	Review Completed by: _____ Comments: _____				
TA Approved: <input type="checkbox"/> Yes <input type="checkbox"/> Denied Date: _____					

Mail to the Appropriate KCC Conservation Office:

	KCC District Office #1 - 210 E. Frontview, Suite A, Dodge City, KS 67801	Phone 620.682.7933
	KCC District Office #2 - 3450 N. Rock Road, Building 600, Suite 601, Wichita, KS 67226	Phone 316.337.7400
	KCC District Office #3 - 137 E. 21st St., Chanute, KS 66720	Phone 620.902.6450
	KCC District Office #4 - 2301 E. 13th Street, Hays, KS 67601-2651	Phone 785.261.6250

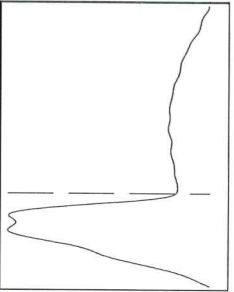
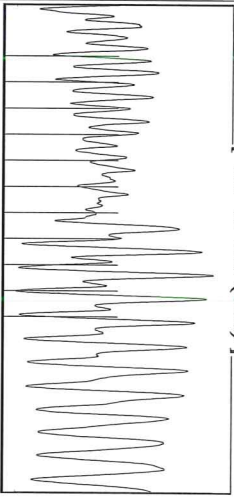
Group: Indian Oil Well: Koblitz 1 (acquired on: 03/09/21 13:16:12)



Filter Type High Pass
Manual Acoustic Velocity 181.31 ft/s
Automatic Collar Count Yes
Manual JTS/sec 18.6916

[4.0 to 5.0 (Sec)]

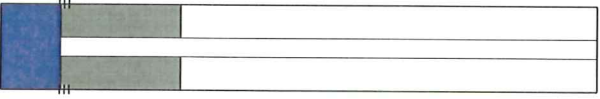
Time 5.514 sec
Joints 109.841 Jts
Depth 3470.96 ft



Analysis Method: Automatic

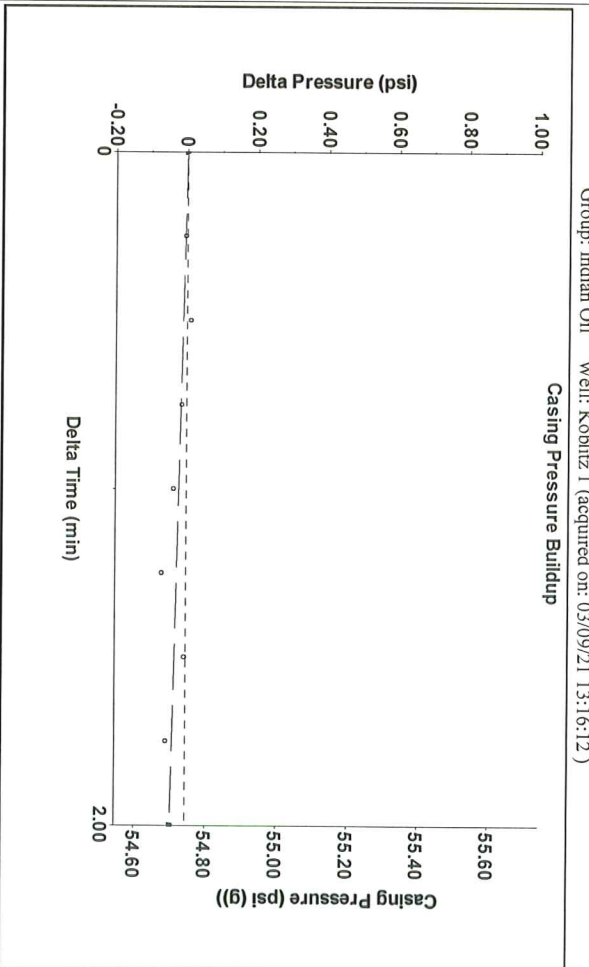
Group: Indian Oil Well: Koblitz 1 (acquired on: 03/09/21 13:16:12)

Production			
Current	Potential	Casing Pressure	54.7 psi (g)
Oil - *-	- *- BBL/D	Casing Pressure Buildup	-0.042 psi
Water - *-	- *- BBL/D		2.00 min
Gas - *-	- *- Mscf/D	Gas/Liquid Interface Pressure	61.0 psi (g)
IPR Method	Vogel		
PBHP/SBHP	- *-		
Production Efficiency	0.0		
Oil 40 deg API		Liquid Level Depth	3470.96 ft
Water 1.05 Sp.Gr:H2O		Pump Intake Depth	4642.00 ft
Gas 0.73 Sp.Gr:AIR		Formation Depth	4604.00 ft
Acoustic Velocity	1258.96 ft/s		
Formation Submergence			
Total Gaseous Liquid Column HT (TVD)	1171 ft		
Equivalent Gas Free Liquid HT (TVD)	1171 ft		



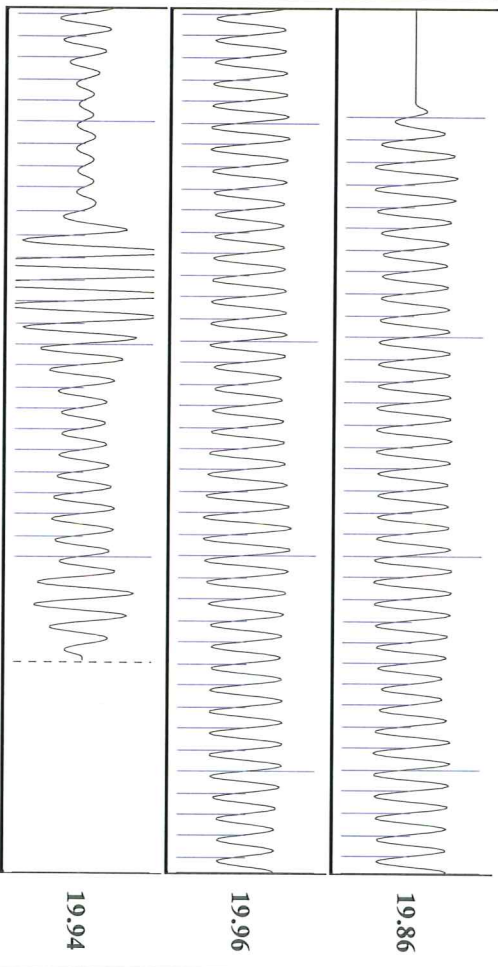
Producing	
Annular Gas Flow	0 Mscf/D
% Liquid	100 %
Pump Intake	452.6 psi (g)
Producing BHP	440.2 psi (g)
Static BHP	- *- psi (g)

Group: Indian Oil Well: Koblitz 1 (acquired on: 03/09/21 13:16:12)



Change in Pressure -0.04 psi PT 15565
Change in Time 2.00 min Range 0 - ? psi

Group: Indian Oil Well: Koblitz 1 (acquired on: 03/09/21 13:16:12)



Acoustic Velocity	1258.96 ft/s	Joints counted	100
Joints Per Second	19.9203 Jts/sec	Joints to liquid level	109.841
Depth to liquid level	3470.96 ft	Filter Width	16.6916
Automatic Collar Count	Yes	Time to 1st Collar	0.248

Conservation Division
District Office No. 2
3450 N. Rock Road
Building 600, Suite 601
Wichita, KS 67226



Phone: 316-337-7400
Fax: 316-630-4005
<http://kcc.ks.gov/>

Andrew J. French, Chairperson
Dwight D. Keen, Commissioner
Susan K. Duffy, Commissioner

Laura Kelly, Governor

March 16, 2021

Anthony Farrar
Indian Oil Co., Inc.
308 S. Main St.
PO BOX 209
MEDICINE LODGE, KS 67104-0209

Re: Temporary Abandonment
API 15-077-21655-00-00
KOBLOITZ 1
NW/4 Sec.26-34S-09W
Harper County, Kansas

Dear Anthony Farrar:

"Your temporary abandonment (TA) application for the well listed above has been approved. In accordance with K.A.R. 82-3-111 the TA status of this well will expire 03/16/2022.

- * If you return this well to service or plug it, please notify the District Office.
- * If you sell this well you are required to file a Transfer of Operator form, T-1.
- * If the well will remain temporarily abandoned, you must submit a new TA application, CP-111, before 03/16/2022.

You may contact me at the number above if you have questions.

Very truly yours,

Steve VanGieson"