

KANSAS CORPORATION COMMISSION
OIL & GAS CONSERVATION DIVISION

Form must be Typed

Form must be signed

All blanks must be complete

TEMPORARY ABANDONMENT WELL APPLICATION

OPERATOR: License# _____

Name: _____

Address 1: _____

Address 2: _____

City: _____ State: _____ Zip: _____ + _____

Contact Person: _____

Phone: (_____) _____

Contact Person Email: _____

Field Contact Person: _____

Field Contact Person Phone: (_____) _____

API No. 15- _____

Spot Description: _____

____ - ____ - ____ - ____ Sec. _____ Twp. _____ S. R. _____ ☐ E ☐ W_____ feet from ☐ N / ☐ S Line of Section_____ feet from ☐ E / ☐ W Line of Section

GPS Location: Lat: _____, Long: _____

(e.g. xx.xxxxx) (e.g. -xxx.xxxxx)

Datum: ☐ NAD27 ☐ NAD83 ☐ WGS84County: _____ Elevation: _____ ☐ GL ☐ KB

Lease Name: _____ Well #: _____

Well Type: (check one) ☐ Oil ☐ Gas ☐ OG ☐ WSW ☐ Other: _____☐ SWD Permit #: _____ ☐ ENHR Permit #: _____☐ Gas Storage Permit #: _____

Spud Date: _____ Date Shut-In: _____

	Conductor	Surface	Production	Intermediate	Liner	Tubing
Size						
Setting Depth						
Amount of Cement						
Top of Cement						
Bottom of Cement						

Casing Fluid Level from Surface: _____ How Determined? _____ Date: _____

Casing Squeeze(s): _____ to _____ w / _____ sacks of cement, _____ to _____ w / _____ sacks of cement. Date: _____
(top) (bottom) (top) (bottom)Do you have a valid Oil & Gas Lease? ☐ Yes ☐ NoDepth and Type: ☐ Junk in Hole at _____ ☐ Tools in Hole at _____ Casing Leaks: ☐ Yes ☐ No Depth of casing leak(s): _____
(depth) (depth)Type Completion: ☐ ALT. I ☐ ALT. II Depth of: ☐ DV Tool: _____ w / _____ sacks of cement ☐ Port Collar: _____ w / _____ sack of cement
(depth) (depth)

Packer Type: _____ Size: _____ Inch Set at: _____ Feet

Total Depth: _____ Plug Back Depth: _____ Plug Back Method: _____

Geological Data:**Formation Name**

Formation Top Formation Base

Completion Information

1. _____ At: _____ to _____ Feet Perforation Interval _____ to _____ Feet or Open Hole Interval _____ to _____ Feet

2. _____ At: _____ to _____ Feet Perforation Interval _____ to _____ Feet or Open Hole Interval _____ to _____ Feet

UNDER PENALTY OF PERJURY I HEREBY ATTEST THAT THE INFORMATION CONTAINED HEREIN IS TRUE AND CORRECT TO THE BEST OF MY KNOWLEDGE

Submitted Electronically

**Do NOT Write in This
Space - KCC USE ONLY**

Date Tested: _____ Results: _____ Date Plugged: _____ Date Repaired: _____ Date Put Back in Service: _____

Review Completed by: _____ Comments: _____

TA Approved: ☐ Yes ☐ Denied Date: _____**Mail to the Appropriate KCC Conservation Office:**

	KCC District Office #1 - 210 E. Frontview, Suite A, Dodge City, KS 67801	Phone 620.682.7933
	KCC District Office #2 - 3450 N. Rock Road, Building 600, Suite 601, Wichita, KS 67226	Phone 316.337.7400
	KCC District Office #3 - 137 E. 21st St., Chanute, KS 66720	Phone 620.902.6450
	KCC District Office #4 - 2301 E. 13th Street, Hays, KS 67601-2651	Phone 785.261.6250

General

Well ID	120527
Well	LIT Trust 1-14H
Company	Sandridge
Operator	- * -
Lease Name	LIT Trust 1-14H
Elevation	1258.00 ft
Production Method	Other
Dataset Description	

Comment

Surface Unit

Manufacturer	- * -
Unit Class	- * -
Unit API Number	- * -
Measured Stroke Length	100.000 in
Rotation	CW
Counter Balance Effect (Weights Level)	- * - Klb
Weight Of Counter Weights	2000 lb

Prime Mover

Motor Type	Electric
Rated HP	- * - HP
Run Time	24 hr/day
MFG/Comment	- * -

Electric Motor Parameters

Rated Full Load AMPS	- * -
Rated Full Load RPM	- * -
Synchronous RPM	1200
Voltage	- * -
Hertz	60
Phase	3
Power Consumption	5
Power Demand	8 \$/KW

Tubulars

Tubing OD	2.875 in
Casing OD	7.000 in
Average Joint Length	31.500 ft
Anchor Depth	- * - ft
Kelly Bushing	20.00 ft

Pump

Plunger Diameter	- * - in
Pump Intake Depth	4836.00 ft
**Total Rod Length < Pump Depth	

Polished Rod

Polished Rod Diameter	- * - in
-----------------------	----------

Rod String

	Top Taper	Taper 2	Taper 3	Taper 4	Taper 5	Taper 6
Rod Type	- * -	- * -	- * -	- * -	- * -	- * -
Rod Length	- * -	- * -	- * -	- * -	- * -	- * - ft
Rod Diameter	- * -	- * -	- * -	- * -	- * -	- * - in
Rod Weight	0.0	0.0	0.0	0.0	0.0	0.0 lb

Total Rod Length	0
Total Rod Weight	0.00

Damp Up	0.05
Damp Down	0.05

Conditions

Pressure

Static BHP	576.6 psi (g)
Static BHP Method	Acoustic
Static BHP Date	02/26/2021

Producing BHP	471.7 psi (g)
Producing BHP Method	Acoustic
Producing BHP Date	01/15/2020
Formation Depth	5310.00 ft

Surface Producing Pressures

Tubing Pressure	- * - psi (g)
Casing Pressure	208.6 psi (g)

Casing Pressure Buildup

Change in Pressure	0.9 psi
Over Change in Time	1.00 min

Production

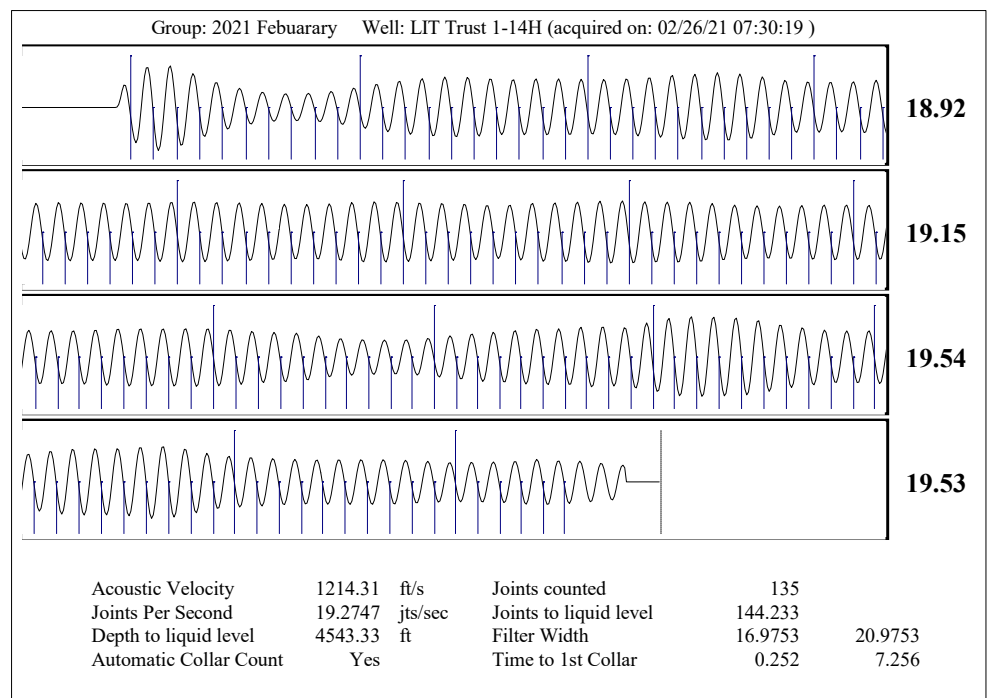
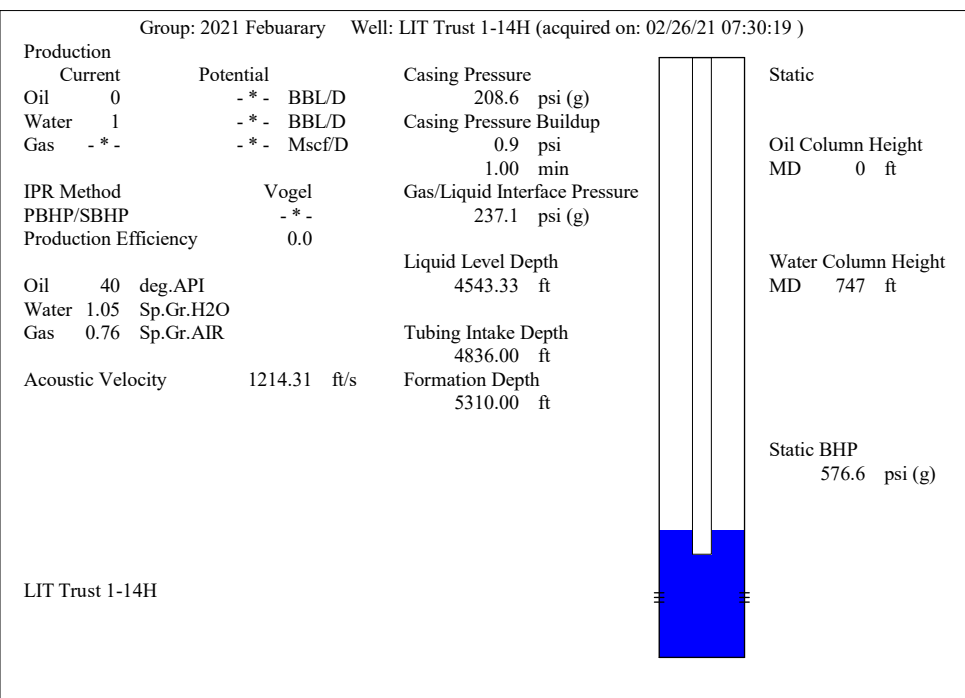
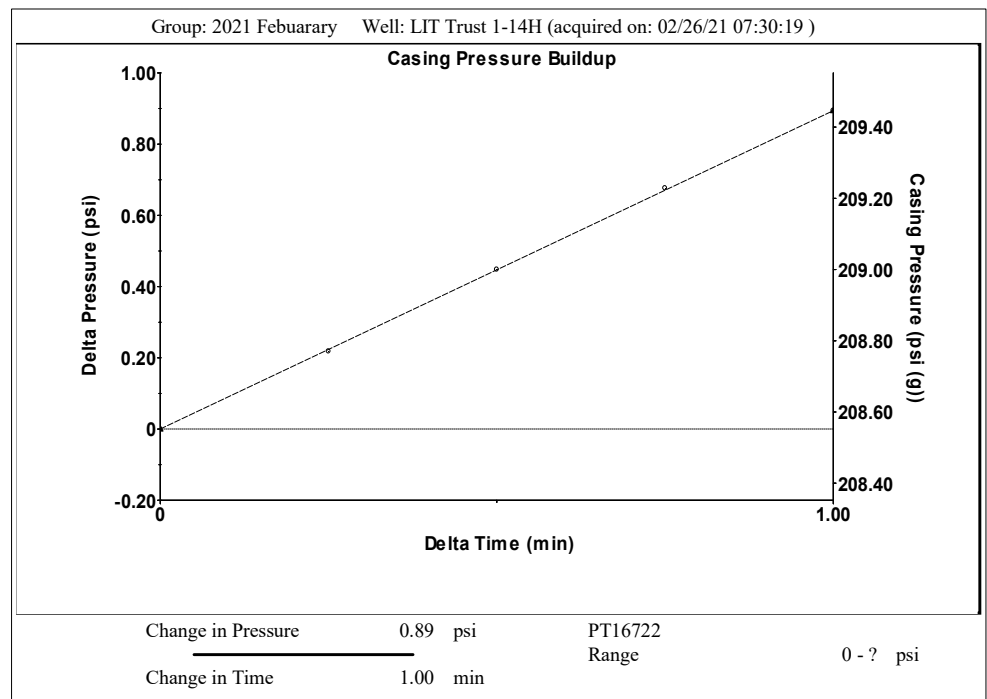
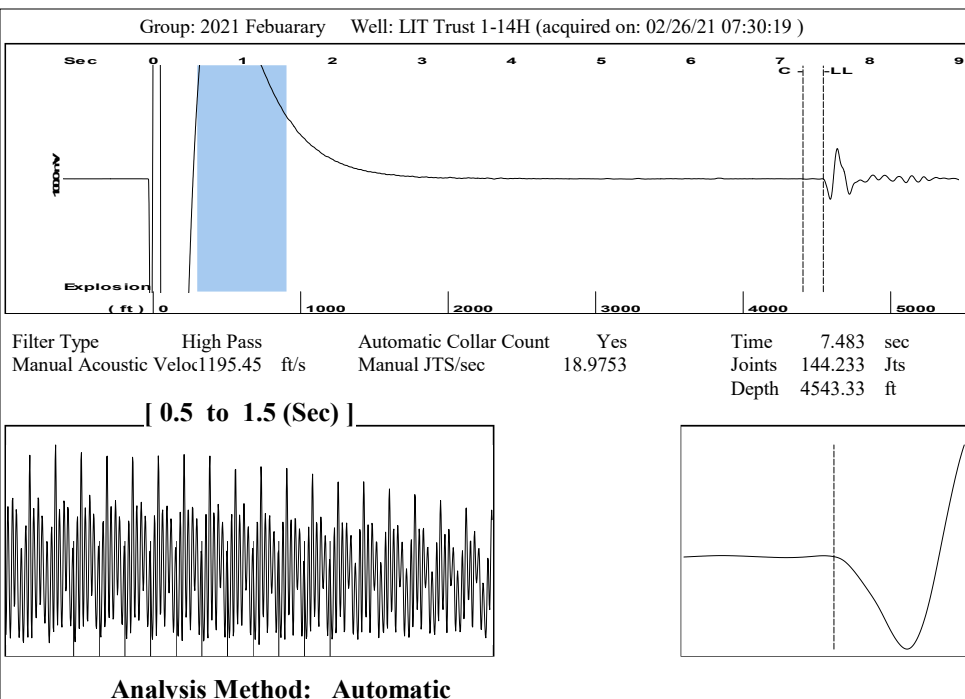
Oil Production	0 BBL/D
Water Production	1 BBL/D
Gas Production	- * - Mscf/D
Production Date	12/06/2016

Temperatures

Surface Temperature	70 deg F
Bottomhole Temperature	150 deg F

Fluid Properties

Oil API	40 deg.API
Water Specific Gravity	1.05 Sp.Gr.H2O



Conservation Division
District Office No. 2
3450 N. Rock Road
Building 600, Suite 601
Wichita, KS 67226



Phone: 316-337-7400
Fax: 316-630-4005
<http://kcc.ks.gov/>

Andrew J. French, Chairperson
Dwight D. Keen, Commissioner
Susan K. Duffy, Commissioner

Laura Kelly, Governor

March 16, 2021

Collette Davis
SandRidge Exploration and Production LLC
123 ROBERT S. KERR AVE
OKLAHOMA CITY, OK 73102-6406

Re: Temporary Abandonment
API 15-077-21796-01-00
LIT TRUST 1-14H
SW/4 Sec.14-35S-08W
Harper County, Kansas

Dear Collette Davis:

"Your temporary abandonment (TA) application for the well listed above has been approved. In accordance with K.A.R. 82-3-111 the TA status of this well will expire 03/16/2022.

- * If you return this well to service or plug it, please notify the District Office.
- * If you sell this well you are required to file a Transfer of Operator form, T-1.
- * If the well will remain temporarily abandoned, you must submit a new TA application, CP-111, before 03/16/2022.

You may contact me at the number above if you have questions.

Very truly yours,

Steve VanGieson"