

KANSAS CORPORATION COMMISSION
OIL & GAS CONSERVATION DIVISION

TEMPORARY ABANDONMENT WELL APPLICATION

OPERATOR: License#
Name:
Address 1:
Address 2:
City: State: Zip:
Contact Person:
Phone:
Contact Person Email:
Field Contact Person:
Field Contact Person Phone:

API No. 15-
Spot Description:
Sec. Twp. S. R.
GPS Location: Lat: Long:
Datum: NAD27 NAD83 WGS84
County: Elevation:
Lease Name: Well #:
Well Type: Oil Gas OG WSW Other:
SWD Permit #: ENHR Permit #:
Gas Storage Permit #:
Spud Date: Date Shut-In:

Table with 7 columns: Conductor, Surface, Production, Intermediate, Liner, Tubing. Rows include Size, Setting Depth, Amount of Cement, Top of Cement, Bottom of Cement.

Casing Fluid Level from Surface: How Determined? Date:
Casing Squeeze(s): to w / sacks of cement, to w / sacks of cement. Date:
Do you have a valid Oil & Gas Lease? Yes No
Depth and Type: Junk in Hole at Tools in Hole at Casing Leaks: Yes No Depth of casing leak(s):
Type Completion: ALT. I ALT. II Depth of: DV Tool: w / sacks of cement Port Collar: w / sack of cement
Packer Type: Size: Inch Set at: Feet
Total Depth: Plug Back Depth: Plug Back Method:

Geological Data:

Table with 4 columns: Formation Name, Formation Top, Formation Base, Completion Information. Rows 1 and 2.

UNDER PENALTY OF PERJURY I HEREBY ATTEST THAT THE INFORMATION CONTAINED HEREIN IS TRUE AND CORRECT TO THE BEST OF MY KNOWLEDGE

Submitted Electronically

Form with fields: Do NOT Write in This Space - KCC USE ONLY, Date Tested, Results, Date Plugged, Date Repaired, Date Put Back in Service, Review Completed by, Comments, TA Approved: Yes Denied, Date.

Mail to the Appropriate KCC Conservation Office:

Table with 2 columns: Office Address, Phone. Rows for KCC District Office #1, #2, #3, #4.

General

Well ID 125090
 Well Crow 1
 Company Sandridge
 Operator - * -
 Lease Name Crow 1
 Elevation 1320.00 ft
 Production Method Other
 Dataset Description
 Shot 2

Comment

Surface Unit

Manufacturer - * -
 Unit Class - * -
 Unit API Number - * -
 Measured Stroke Length 100.000 in
 Rotation CW
 Counter Balance Effect (Weights Level) - * - Klb
 Weight Of Counter Weights 2000 lb

Prime Mover

Motor Type Electric
 Rated HP - * - HP
 Run Time 24 hr/day
 MFG/Comment - * -

Electric Motor Parameters

Rated Full Load AMPS - * -
 Rated Full Load RPM - * -
 Synchronous RPM 1200
 Voltage - * -
 Hertz 60
 Phase 3
 Power Consumption 5
 Power Demand 8 \$/KW

Tubulars

Tubing OD 2.375 in
 Casing OD 4.500 in
 Average Joint Length 31.060 ft
 Anchor Depth - * - ft
 Kelly Bushing 3.00 ft

Pump

Plunger Diameter - * - in
 Pump Intake Depth 4474.00 ft
 **Total Rod Length < Pump Depth

Polished Rod

Polished Rod Diameter - * - in

Rod String

	Top Taper	Taper 2	Taper 3	Taper 4	Taper 5	Taper 6
Rod Type	- * -	- * -	- * -	- * -	- * -	- * -
Rod Length	- * -	- * -	- * -	- * -	- * -	- * - ft
Rod Diameter	- * -	- * -	- * -	- * -	- * -	- * - in
Rod Weight	0.0	0.0	0.0	0.0	0.0	0.0 lb

Total Rod Length 0
 Total Rod Weight 0.00

Damp Up 0.05
 Damp Down 0.05

Conditions

Pressure

Static BHP 1212.6 psi (g)
 Static BHP Method Acoustic
 Static BHP Date 02/26/2021

Producing BHP 449.5 psi (g)
 Producing BHP Method Acoustic
 Producing BHP Date 01/21/2020
 Formation Depth 4487.00 ft

Surface Producing Pressures

Tubing Pressure 0.0 psi (g)
 Casing Pressure 186.9 psi (g)

Casing Pressure Buildup

Change in Pressure 1.1 psi
 Over Change in Time 1.50 min

Production

Oil Production 0 BBL/D
 Water Production 1 BBL/D
 Gas Production - * - Mscf/D
 Production Date 10/31/2016

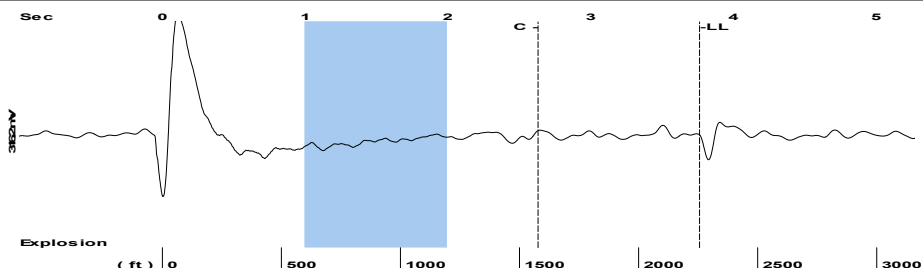
Temperatures

Surface Temperature 70 deg F
 Bottomhole Temperature 150 deg F

Fluid Properties

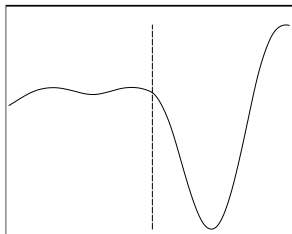
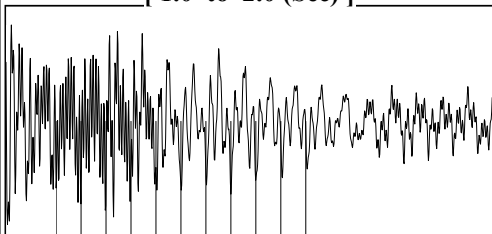
Oil API 40 deg.API
 Water Specific Gravity 1.05 Sp.Gr.H2O

Group: 2021 Febuaryary Well: Crow 1 (acquired on: 02/26/21 11:33:20)



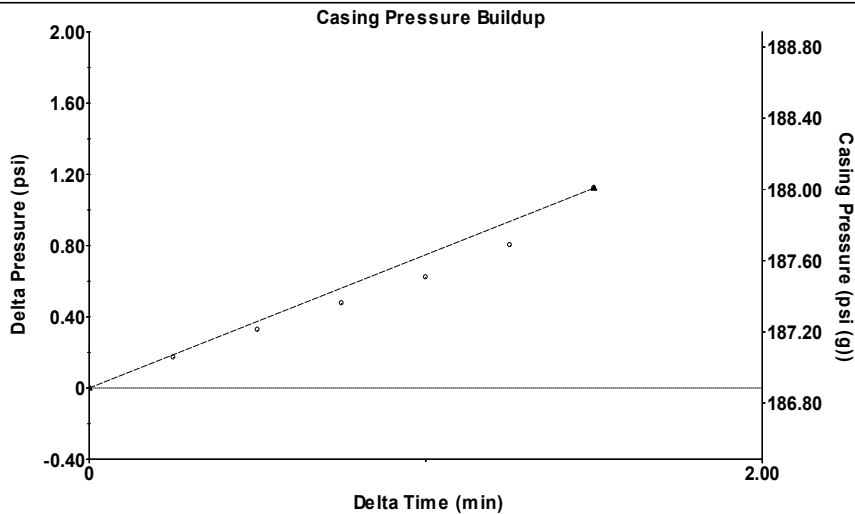
Filter Type High Pass Automatic Collar Count Yes Time 3.764 sec
 Manual Acoustic Veloc 1210.92 ft/s Manual JTS/sec 19.4932 Joints 72.6275 Jts
 Depth 2255.81 ft

[1.0 to 2.0 (Sec)]



Analysis Method: Automatic

Group: 2021 Febuaryary Well: Crow 1 (acquired on: 02/26/21 11:33:20)



Change in Pressure 1.12 psi PT16722
 Change in Time 1.50 min Range 0 - ? psi

Group: 2021 Febuaryary Well: Crow 1 (acquired on: 02/26/21 11:33:20)

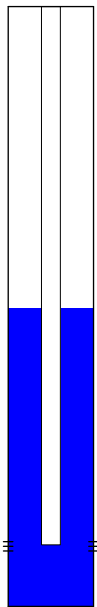
Production Current Potential
 Oil 0 - * - BBL/D
 Water 1 - * - BBL/D
 Gas - * - - * - Mscf/D
 IPR Method Vogel
 PBHP/SBHP - * -
 Production Efficiency 0.0

Oil 40 deg.API
 Water 1.05 Sp.Gr.H2O
 Gas 0.76 Sp.Gr.AIR

Acoustic Velocity 1198.62 ft/s

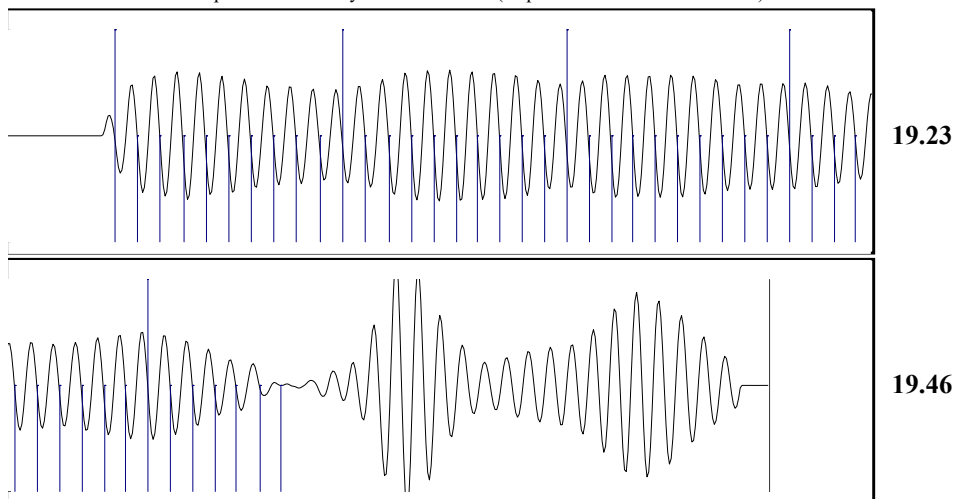
Casing Pressure 186.9 psi (g)
 Casing Pressure Buildup 1.1 psi
 1.50 min
 Gas/Liquid Interface Pressure 199.6 psi (g)
 Liquid Level Depth 2255.81 ft
 Tubing Intake Depth 4474.00 ft
 Formation Depth 4487.00 ft

Static
 Oil Column Height MD 0 ft
 Water Column Height MD 2228 ft
 Static BHP 1212.6 psi (g)



Crow 1

Group: 2021 Febuaryary Well: Crow 1 (acquired on: 02/26/21 11:33:20)



Acoustic Velocity 1198.62 ft/s Joints counted 46
 Joints Per Second 19.2953 jts/sec Joints to liquid level 72.6275
 Depth to liquid level 2255.81 ft Filter Width 17.4932 21.4932
 Automatic Collar Count Yes Time to 1st Collar 0.248 2.632

Conservation Division
District Office No. 2
3450 N. Rock Road
Building 600, Suite 601
Wichita, KS 67226



Phone: 316-337-7400
Fax: 316-630-4005
<http://kcc.ks.gov/>

Andrew J. French, Chairperson
Dwight D. Keen, Commissioner
Susan K. Duffy, Commissioner

Laura Kelly, Governor

March 16, 2021

Collette Davis
SandRidge Exploration and Production LLC
123 ROBERT S. KERR AVE
OKLAHOMA CITY, OK 73102-6406

Re: Temporary Abandonment
API 15-077-20434-00-00
CROW 1
SE/4 Sec.28-33S-06W
Harper County, Kansas

Dear Collette Davis:

"Your temporary abandonment (TA) application for the well listed above has been approved. In accordance with K.A.R. 82-3-111 the TA status of this well will expire 03/16/2022.

- * If you return this well to service or plug it, please notify the District Office.
- * If you sell this well you are required to file a Transfer of Operator form, T-1.
- * If the well will remain temporarily abandoned, you must submit a new TA application, CP-111, before 03/16/2022.

You may contact me at the number above if you have questions.

Very truly yours,

Steve VanGieson"