

KANSAS CORPORATION COMMISSION
OIL & GAS CONSERVATION DIVISION

TEMPORARY ABANDONMENT WELL APPLICATION

OPERATOR: License#
Name:
Address 1:
Address 2:
City: State: Zip:
Contact Person:
Phone:
Contact Person Email:
Field Contact Person:
Field Contact Person Phone:

API No. 15-
Spot Description:
Sec. Twp. S. R.
GPS Location: Lat: Long:
Datum: NAD27 NAD83 WGS84
County: Elevation:
Lease Name: Well #:
Well Type: Oil Gas OG WSW Other:
SWD Permit #: ENHR Permit #:
Gas Storage Permit #:
Spud Date: Date Shut-In:

Table with 7 columns: Conductor, Surface, Production, Intermediate, Liner, Tubing. Rows include Size, Setting Depth, Amount of Cement, Top of Cement, Bottom of Cement.

Casing Fluid Level from Surface: How Determined? Date:
Casing Squeeze(s): to w / sacks of cement, to w / sacks of cement. Date:
Do you have a valid Oil & Gas Lease? Yes No
Depth and Type: Junk in Hole at Tools in Hole at Casing Leaks: Yes No Depth of casing leak(s):
Type Completion: ALT. I ALT. II Depth of: DV Tool: w / sacks of cement Port Collar: w / sack of cement
Packer Type: Size: Inch Set at: Feet
Total Depth: Plug Back Depth: Plug Back Method:

Geological Data:

Table with 4 columns: Formation Name, Formation Top, Formation Base, Completion Information. Rows 1 and 2.

UNDER PENALTY OF PERJURY I HEREBY ATTEST THAT THE INFORMATION CONTAINED HEREIN IS TRUE AND CORRECT TO THE BEST OF MY KNOWLEDGE

Submitted Electronically

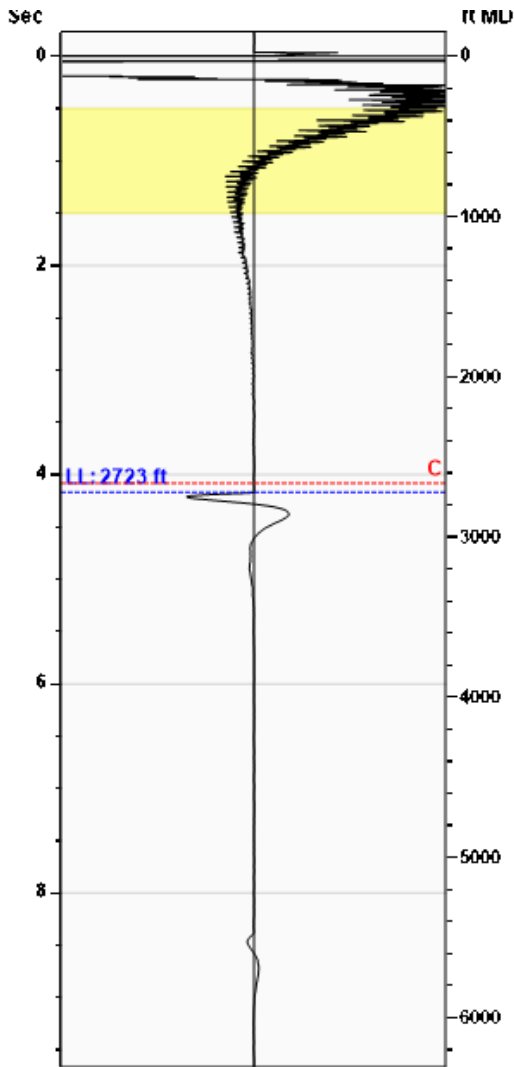
Do NOT Write in This Space - KCC USE ONLY
Date Tested: Results: Date Plugged: Date Repaired: Date Put Back in Service:
Review Completed by: Comments:
TA Approved: Yes Denied Date:

Mail to the Appropriate KCC Conservation Office:

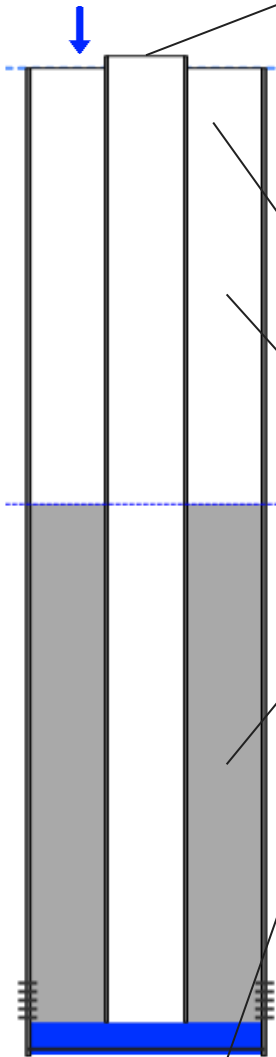
Table with 2 columns: Office Address, Phone. Rows for District Office #1, #2, #3, #4.

**Liquid Level** **2723 ft MD**

**Fluid Above Tubing** **3233 ft TVD**  
**Gas Free Above Tubing** **3233 ft TVD**



Gun - WG 3907



<b>Production</b>			
Date Entered	03/07/21		
	Current	Potential	
Oil	**	**	BBL/D
Water	**	**	BBL/D
Gas	**	**	Mscf/D
IPR Method	Vogel		
PBHP/SBHP	-0.00		
Producing Efficiency	0.00%		

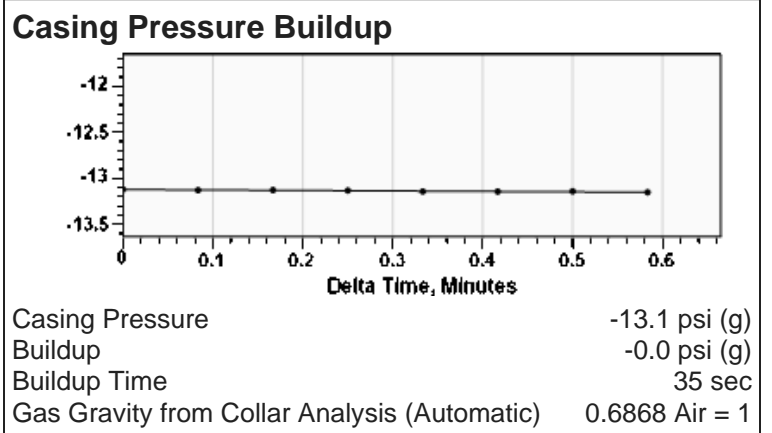
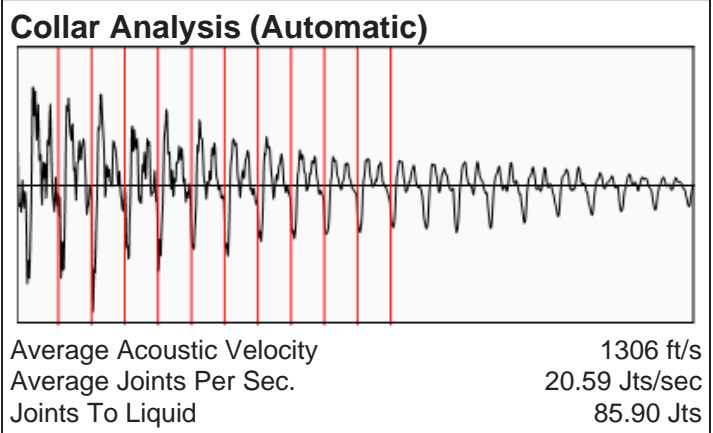
<b>Casing Pressure</b>	
Pressure	-13.1 psi (g)

<b>Annular Gas Flow</b>	
Gas Flow	0.0 Mscf/D

<b>Fluid Properties</b>	
% Liquid Above Tubing	100.00%
% Liquid Below Tubing	100.00%

<b>Depths</b>	
Tubing Depth	5956 ft
Formation Depth	5978 ft

<b>Wellbore Pressures</b>	
TIP	1048.7 psi (g)
PBHP	1058.7 psi (g)
SBHP	**
Gas/Liq Interface	-13.0 psi (g)



**Comments and Recommendations**

MIKE VARNER  
 PRODUCTION FOREMAN  
 806-670-5216

March 17, 2021

Lisa Jones  
Pantera Energy Company  
817 S POLK ST STE 201  
AMARILLO, TX 79101-3433

Re: Temporary Abandonment  
API 15-189-22278-00-00  
HJV-SPRING A 1  
NE/4 Sec.29-32S-37W  
Stevens County, Kansas

Dear Lisa Jones:

"Your temporary abandonment (TA) application for the well listed above has been approved. In accordance with K.A.R. 82-3-111 the TA status of this well will expire 03/17/2022.

- \* If you return this well to service or plug it, please notify the District Office.
- \* If you sell this well you are required to file a Transfer of Operator form, T-1.
- \* If the well will remain temporarily abandoned, you must submit a new TA application, CP-111, before 03/17/2022.

You may contact me at the number above if you have questions.

Very truly yours,

Michael Maier"