

KANSAS CORPORATION COMMISSION
OIL & GAS CONSERVATION DIVISION

TEMPORARY ABANDONMENT WELL APPLICATION

OPERATOR: License#
Name:
Address 1:
Address 2:
City: State: Zip:
Contact Person:
Phone:
Contact Person Email:
Field Contact Person:
Field Contact Person Phone:

API No. 15-
Spot Description:
Sec. Twp. S. R.
feet from N / S Line of Section
feet from E / W Line of Section
GPS Location: Lat: , Long:
Datum: NAD27 NAD83 WGS84
County: Elevation: GL KB
Lease Name: Well #:
Well Type: Oil Gas OG WSW Other:
SWD Permit #: ENHR Permit #:
Gas Storage Permit #:
Spud Date: Date Shut-In:

Table with 7 columns: Conductor, Surface, Production, Intermediate, Liner, Tubing. Rows include Size, Setting Depth, Amount of Cement, Top of Cement, Bottom of Cement.

Casing Fluid Level from Surface: How Determined? Date:
Casing Squeeze(s): to w / sacks of cement, to w / sacks of cement. Date:
Do you have a valid Oil & Gas Lease? Yes No
Depth and Type: Junk in Hole at Tools in Hole at Casing Leaks: Yes No Depth of casing leak(s):
Type Completion: ALT. I ALT. II Depth of: DV Tool: w / sacks of cement Port Collar: w / sack of cement
Packer Type: Size: Inch Set at: Feet
Total Depth: Plug Back Depth: Plug Back Method:

Geological Data:

Table with 4 columns: Formation Name, Formation Top, Formation Base, Completion Information. Rows 1 and 2.

UNDER PENALTY OF PERJURY I HEREBY ATTEST THAT THE INFORMATION CONTAINED HEREIN IS TRUE AND CORRECT TO THE BEST OF MY KNOWLEDGE

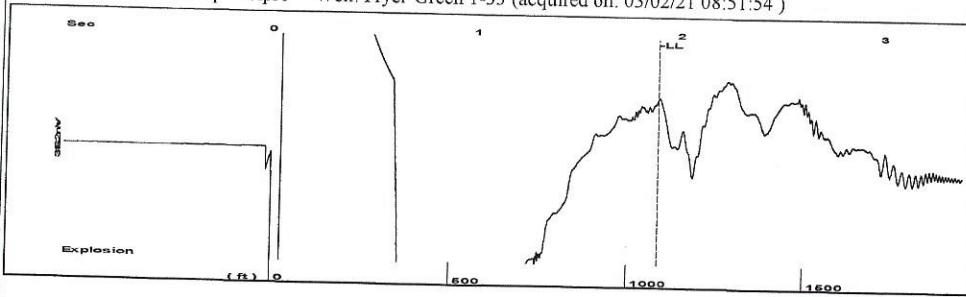
Submitted Electronically

Do NOT Write in This Space - KCC USE ONLY
Date Tested: Results: Date Plugged: Date Repaired: Date Put Back in Service:
Review Completed by: Comments:
TA Approved: Yes Denied Date:

Mail to the Appropriate KCC Conservation Office:

Table with 3 columns: District Office, Address, Phone. Rows for District Office #1, #2, #3, #4.

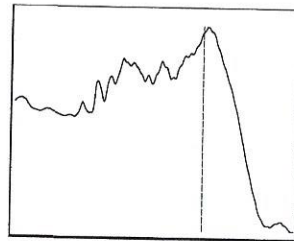
Group: Belpre Well: Fryer-Green 1-33 (acquired on: 03/02/21 08:51:54)



Time 1.89 sec  
 Joints 34.2823 Jts  
 Depth 1086.75 ft

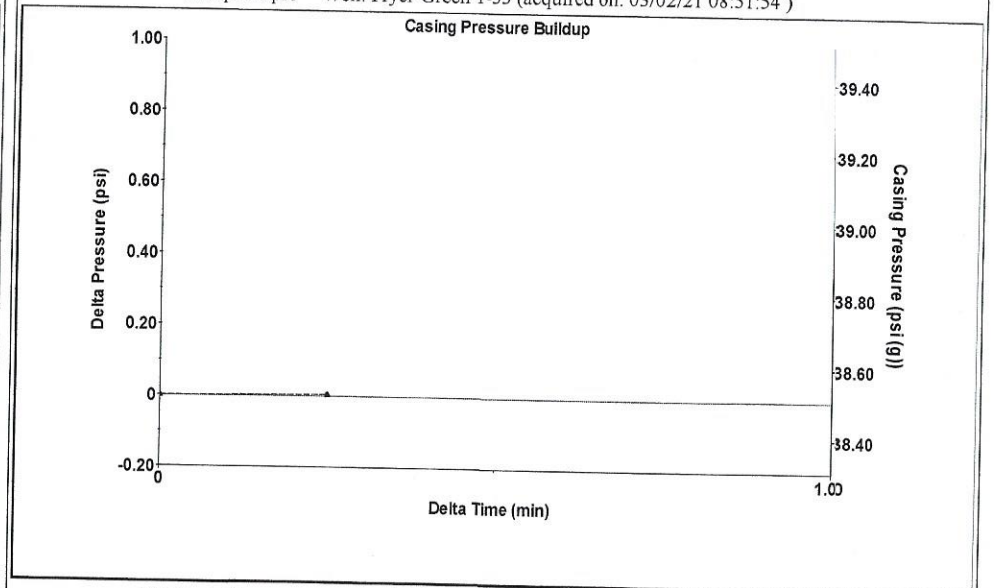
Liquid level calculated with user supplied Acoustic Velocity

Acoustic Velocity 1150 ft/s



**Analysis Method: Acoustic Velocity**

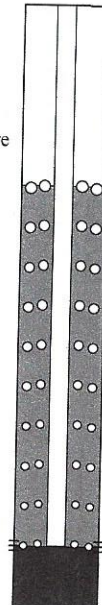
Group: Belpre Well: Fryer-Green 1-33 (acquired on: 03/02/21 08:51:54)



Change in Pressure 0.00 psi PT13440  
 Range 0 - ? psi  
 Change in Time 0.25 min

Group: Belpre Well: Fryer-Green 1-33 (acquired on: 03/02/21 08:51:54)

Production Current	Potential	Casing Pressure	Producing
Oil - *-	- *- BBL/D	38.5 psi (g)	
Water - *-	- *- BBL/D	Casing Pressure Buildup	Annular Gas Flow
Gas - *-	- *- Mscf/D	0.0 psi	0 Mscf/D
		0.25 min	% Liquid
IPR Method	Vogel	Gas/Liquid Interface Pressure	100 %
PBHP/SBHP	- *-	40.3 psi (g)	
Production Efficiency	0.0		
		Liquid Level Depth	
Oil 40 deg.API		1086.75 ft	
Water 1.05 Sp.Gr.H2O		Pump Intake Depth	
Gas 0.84 Sp.Gr.AIR		4327.00 ft	
Acoustic Velocity	1150 ft/s	Formation Depth	
		4328.00 ft	
Formation Submergence			Pump Intake
Total Gaseous Liquid Column HT (TVD)	3240 ft		1097.7 psi (g)
Equivalent Gas Free Liquid HT (TVD)	3240 ft		Producing BHP
Acoustic Test			1098.2 psi (g)
			Static BHP
			- *- psi (g)



Group: Belpre Well: Fryer-Green 1-33 (acquired on: 03/02/21 08:51:54)

**Entered Acoustic Velocity for Liquid Level depth determination**

March 17, 2021

Loveness Mpanje  
F. G. Holl Company L.L.C.  
9431 E CENTRAL STE 100  
WICHITA, KS 67206-2563

Re: Temporary Abandonment  
API 15-145-20861-00-00  
FRYER-GREENE 1-33  
SE/4 Sec.33-23S-17W  
Pawnee County, Kansas

Dear Loveness Mpanje:

"Your temporary abandonment (TA) application for the well listed above has been approved. In accordance with K.A.R. 82-3-111 the TA status of this well will expire 03/17/2022.

- \* If you return this well to service or plug it, please notify the District Office.
- \* If you sell this well you are required to file a Transfer of Operator form, T-1.
- \* If the well will remain temporarily abandoned, you must submit a new TA application, CP-111, before 03/17/2022.

You may contact me at the number above if you have questions.

Very truly yours,

Michael Maier"