

KANSAS CORPORATION COMMISSION
OIL & GAS CONSERVATION DIVISION

TEMPORARY ABANDONMENT WELL APPLICATION

OPERATOR: License# \_\_\_\_\_
Name: \_\_\_\_\_
Address 1: \_\_\_\_\_
Address 2: \_\_\_\_\_
City: \_\_\_\_\_ State: \_\_\_\_\_ Zip: \_\_\_\_\_ + \_\_\_\_\_
Contact Person: \_\_\_\_\_
Phone:( \_\_\_\_\_ ) \_\_\_\_\_
Contact Person Email: \_\_\_\_\_
Field Contact Person: \_\_\_\_\_
Field Contact Person Phone: ( \_\_\_\_\_ ) \_\_\_\_\_

API No. 15- \_\_\_\_\_
Spot Description: \_\_\_\_\_
- - - - - Sec. \_\_\_\_\_ Twp. \_\_\_\_\_ S. R. \_\_\_\_\_  E  W
\_\_\_\_\_ feet from  N /  S Line of Section
\_\_\_\_\_ feet from  E /  W Line of Section
GPS Location: Lat: \_\_\_\_\_, Long: \_\_\_\_\_
Datum:  NAD27  NAD83  WGS84
County: \_\_\_\_\_ Elevation: \_\_\_\_\_  GL  KB
Lease Name: \_\_\_\_\_ Well #: \_\_\_\_\_
Well Type: (check one)  Oil  Gas  OG  WSW  Other: \_\_\_\_\_
 SWD Permit #: \_\_\_\_\_  ENHR Permit #: \_\_\_\_\_
 Gas Storage Permit #: \_\_\_\_\_
Spud Date: \_\_\_\_\_ Date Shut-In: \_\_\_\_\_

Table with 7 columns: Conductor, Surface, Production, Intermediate, Liner, Tubing. Rows include Size, Setting Depth, Amount of Cement, Top of Cement, Bottom of Cement.

Casing Fluid Level from Surface: \_\_\_\_\_ How Determined? \_\_\_\_\_ Date: \_\_\_\_\_
Casing Squeeze(s): \_\_\_\_\_ to \_\_\_\_\_ w / \_\_\_\_\_ sacks of cement, \_\_\_\_\_ to \_\_\_\_\_ w / \_\_\_\_\_ sacks of cement. Date: \_\_\_\_\_
Do you have a valid Oil & Gas Lease?  Yes  No
Depth and Type:  Junk in Hole at \_\_\_\_\_ (depth)  Tools in Hole at \_\_\_\_\_ (depth) Casing Leaks:  Yes  No Depth of casing leak(s): \_\_\_\_\_
Type Completion:  ALT. I  ALT. II Depth of:  DV Tool: \_\_\_\_\_ w / \_\_\_\_\_ sacks of cement  Port Collar: \_\_\_\_\_ w / \_\_\_\_\_ sack of cement
Packer Type: \_\_\_\_\_ Size: \_\_\_\_\_ Inch Set at: \_\_\_\_\_ Feet
Total Depth: \_\_\_\_\_ Plug Back Depth: \_\_\_\_\_ Plug Back Method: \_\_\_\_\_

Geological Date:

Table with 4 columns: Formation Name, Formation Top, Formation Base, Completion Information. Rows 1 and 2.

UNDER PENALTY OF PERJURY I HEREBY ATTEST THAT THE INFORMATION CONTAINED HEREIN IS TRUE AND CORRECT TO THE BEST OF MY KNOWLEDGE

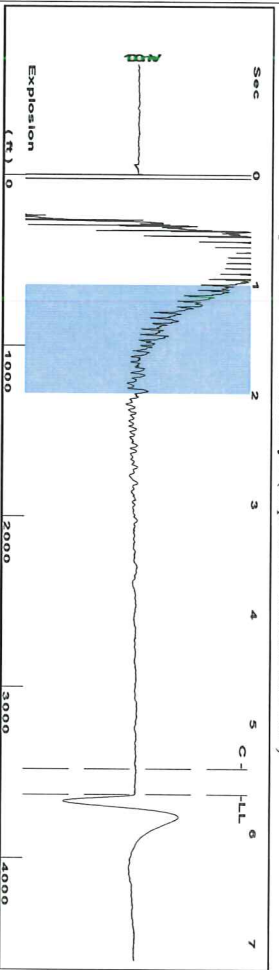
Submitted Electronically

Do NOT Write in This Space - KCC USE ONLY
Date Tested: \_\_\_\_\_ Results: \_\_\_\_\_ Date Plugged: \_\_\_\_\_ Date Repaired: \_\_\_\_\_ Date Put Back in Service: \_\_\_\_\_
Review Completed by: \_\_\_\_\_ Comments: \_\_\_\_\_
TA Approved:  Yes  Denied Date: \_\_\_\_\_

Mail to the Appropriate KCC Conservation Office:

Table with 3 columns: District Office, Address, Phone. Rows for District Office #1, #2, #3, #4.

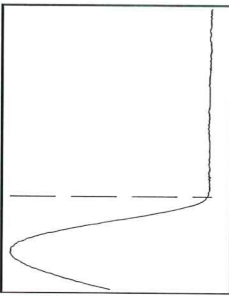
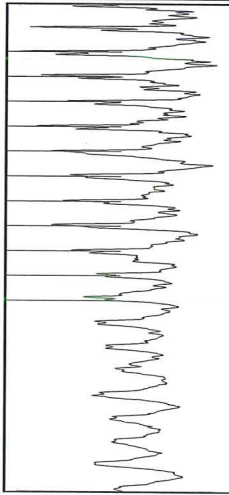
Group: Indian Oil Well: Curry 1 (acquired on: 03/09/21 10:14:39)



Filter Type High Pass  
Manual Acoustic Velo 1243.14 ft/s  
Automatic Collar Count Yes  
Manual JTS/sec 19.6078

Time 5.649 sec  
Joints 114.477 Jts  
Depth 3628.92 ft

1.0 to 2.0 (Sec) |

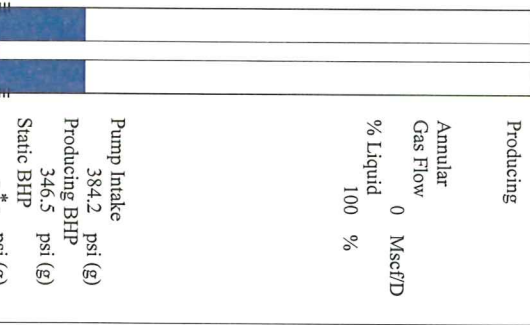


**Analysis Method: Automatic**

Group: Indian Oil Well: Curry 1 (acquired on: 03/09/21 10:14:39)

<b>Production</b>	<b>Potential</b>	<b>Casing Pressure</b>
Oil 0	-*- BBL/D	0.4 psi (g)
Water 0	-*- BBL/D	Casing Pressure Buildup
Gas 0.0	-*- Mscf/D	-0.032 psi
		2.00 min
<b>IPR Method</b>	<b>Vogel</b>	<b>Gas/Liquid Interface Pressure</b>
PBHP/SBHP	-*-	1.8 psi (g)
<b>Production Efficiency</b>		
0.0		

<b>Liquid Level Depth</b>	3628.92 ft
<b>Pump Intake Depth</b>	4470.00 ft
<b>Formation Depth</b>	4387.00 ft
<b>Acoustic Velocity</b>	1284.8 ft/s
<b>Oil</b>	40 deg.API
<b>Water</b>	1.05 Sp.Gr.H2O
<b>Gas</b>	0.72 Sp.Gr.AIR
<b>Formation Submergence</b>	
Total Gaseous Liquid Column HT (TVD)	841 ft
Equivalent Gas Free Liquid HT (TVD)	841 ft



**Producing**

Annular Gas Flow 0 Mscf/D

% Liquid 100 %

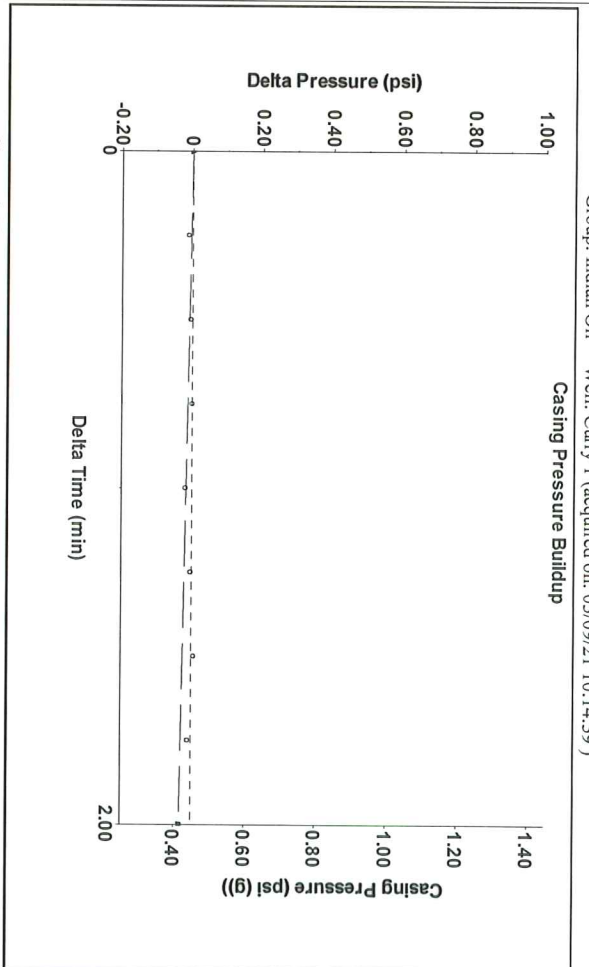
**Pump Intake**

384.2 psi (g)

Producing BHP 346.5 psi (g)

Static BHP -\*- psi (g)

Group: Indian Oil Well: Curry 1 (acquired on: 03/09/21 10:14:39)

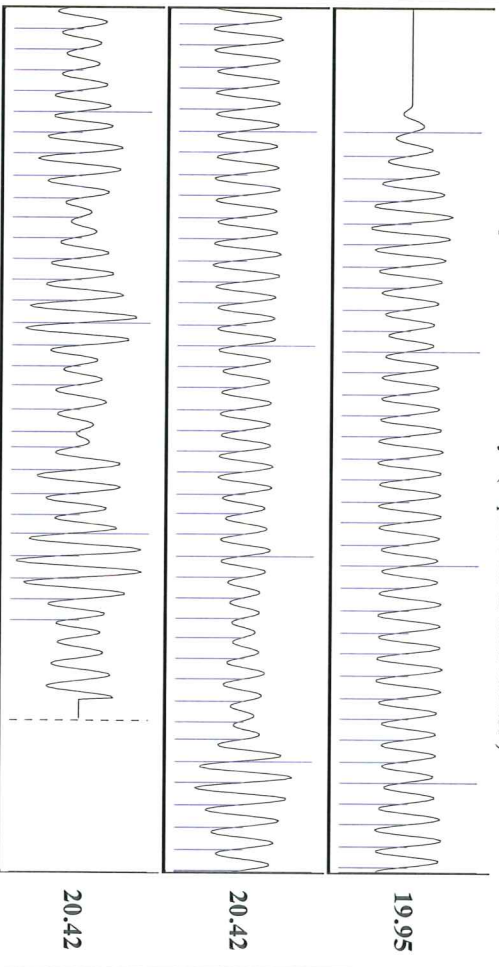


Change in Pressure -0.03 psi  
Change in Time 2.00 min

PT 15565  
Range

0 - ? psi

Group: Indian Oil Well: Curry 1 (acquired on: 03/09/21 10:14:39)



<b>Acoustic Velocity</b>	1284.8 ft/s	<b>Joints counted</b>	104
<b>Joints Per Second</b>	20.265 jts/sec	<b>Joints to liquid level</b>	114.477
<b>Depth to liquid level</b>	3628.92 ft	<b>Filter Width</b>	17.6078
<b>Automatic Collar Count</b>	Yes	<b>Time to 1st Collar</b>	0.284

March 17, 2021

Anthony Farrar  
Indian Oil Co., Inc.  
308 S. Main St.  
PO BOX 209  
MEDICINE LODGE, KS 67104-0209

Re: Temporary Abandonment  
API 15-151-20391-00-00  
CURRY 1  
NE/4 Sec.32-29S-13W  
Pratt County, Kansas

Dear Anthony Farrar:

"Your temporary abandonment (TA) application for the well listed above has been approved. In accordance with K.A.R. 82-3-111 the TA status of this well will expire 03/17/2022.

- \* If you return this well to service or plug it, please notify the District Office.
- \* If you sell this well you are required to file a Transfer of Operator form, T-1.
- \* If the well will remain temporarily abandoned, you must submit a new TA application, CP-111, before 03/17/2022.

You may contact me at the number above if you have questions.

Very truly yours,

Michael Maier"