

KANSAS CORPORATION COMMISSION
OIL & GAS CONSERVATION DIVISION

TEMPORARY ABANDONMENT WELL APPLICATION

OPERATOR: License# _____
 Name: _____
 Address 1: _____
 Address 2: _____
 City: _____ State: _____ Zip: _____ + _____
 Contact Person: _____
 Phone: (_____) _____
 Contact Person Email: _____
 Field Contact Person: _____
 Field Contact Person Phone: (_____) _____

API No. 15- _____
 Spot Description: _____
 _____ - _____ - _____ - _____ Sec. _____ Twp. _____ S. R. _____ E W
 _____ feet from N / S Line of Section
 _____ feet from E / W Line of Section
 GPS Location: Lat: _____, Long: _____
(e.g. xx.xxxxx) (e.g. -xxx.xxxxx)
 Datum: NAD27 NAD83 WGS84
 County: _____ Elevation: _____ GL KB
 Lease Name: _____ Well #: _____
 Well Type: (check one) Oil Gas OG WSW Other: _____
 SWD Permit #: _____ ENHR Permit #: _____
 Gas Storage Permit #: _____
 Spud Date: _____ Date Shut-In: _____

| | Conductor | Surface | Production | Intermediate | Liner | Tubing |
|------------------|-----------|---------|------------|--------------|-------|--------|
| Size | | | | | | |
| Setting Depth | | | | | | |
| Amount of Cement | | | | | | |
| Top of Cement | | | | | | |
| Bottom of Cement | | | | | | |

Casing Fluid Level from Surface: _____ How Determined? _____ Date: _____
 Casing Squeeze(s): _____ to _____ w / _____ sacks of cement, _____ to _____ w / _____ sacks of cement. Date: _____
(top) (bottom) (top) (bottom)
 Do you have a valid Oil & Gas Lease? Yes No
 Depth and Type: Junk in Hole at _____ Tools in Hole at _____ Casing Leaks: Yes No Depth of casing leak(s): _____
(depth) (depth)
 Type Completion: ALT. I ALT. II Depth of: DV Tool: _____ w / _____ sacks of cement Port Collar: _____ w / _____ sack of cement
(depth) (depth)
 Packer Type: _____ Size: _____ Inch Set at: _____ Feet
 Total Depth: _____ Plug Back Depth: _____ Plug Back Method: _____

Geological Data:

| Formation Name | Formation Top | Formation Base | Completion Information |
|----------------|---------------|----------------|--|
| 1. _____ | At: _____ | to _____ Feet | Perforation Interval _____ to _____ Feet or Open Hole Interval _____ to _____ Feet |
| 2. _____ | At: _____ | to _____ Feet | Perforation Interval _____ to _____ Feet or Open Hole Interval _____ to _____ Feet |

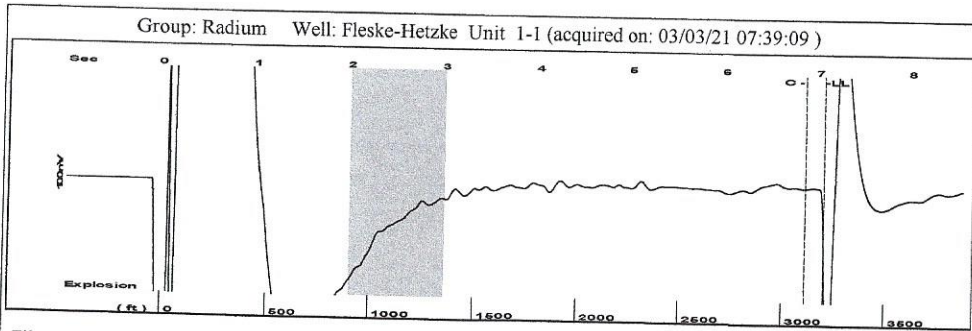
UNDER PENALTY OF PERJURY I HEREBY ATTEST THAT THE INFORMATION CONTAINED HEREIN IS TRUE AND CORRECT TO THE BEST OF MY KNOWLEDGE

Submitted Electronically

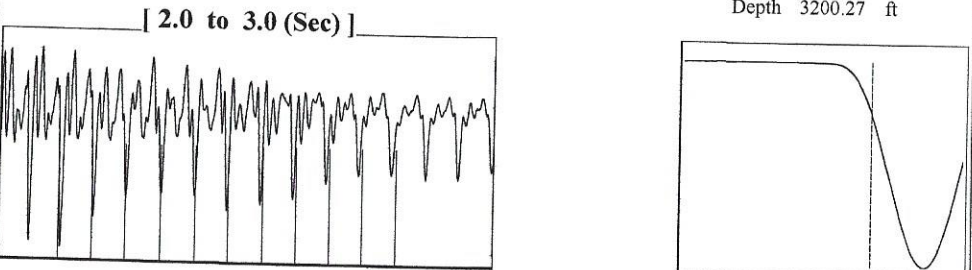
| | | | | | |
|---|--|----------------|---------------------|----------------------|---------------------------------|
| Do NOT Write in This Space - KCC USE ONLY | Date Tested: _____ | Results: _____ | Date Plugged: _____ | Date Repaired: _____ | Date Put Back in Service: _____ |
| | Review Completed by: _____ Comments: _____ | | | | |
| TA Approved: <input type="checkbox"/> Yes <input type="checkbox"/> Denied Date: _____ | | | | | |

Mail to the Appropriate KCC Conservation Office:

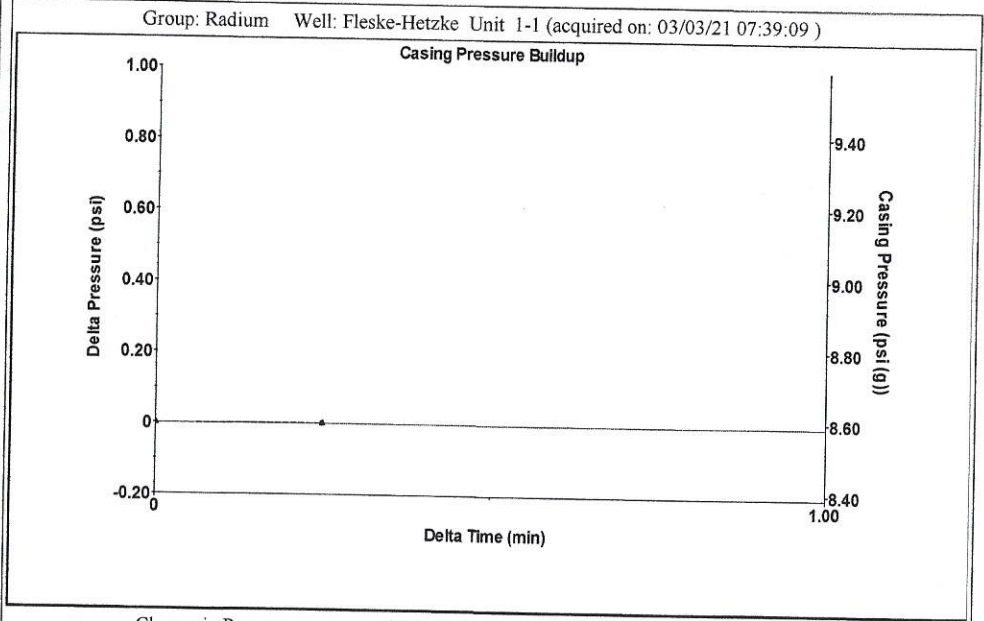
| | | |
|--|--|--------------------|
|  | KCC District Office #1 - 210 E. Frontview, Suite A, Dodge City, KS 67801 | Phone 620.682.7933 |
| | KCC District Office #2 - 3450 N. Rock Road, Building 600, Suite 601, Wichita, KS 67226 | Phone 316.337.7400 |
| | KCC District Office #3 - 137 E. 21st St., Chanute, KS 66720 | Phone 620.902.6450 |
| | KCC District Office #4 - 2301 E. 13th Street, Hays, KS 67601-2651 | Phone 785.261.6250 |



Filter Type High Pass Automatic Collar Count Yes Time 7.051 sec
 Manual Acoustic Velo 886.804 ft/s Manual JTS/sec 14.6628 Joints 105.829 Jts
 Depth 3200.27 ft



Analysis Method: Automatic



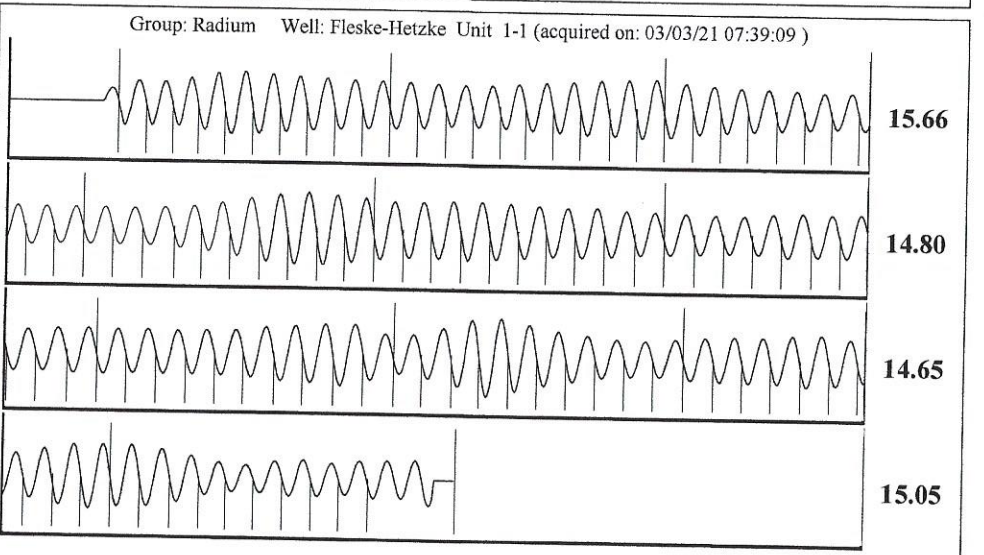
Change in Pressure 0.00 psi PT13440
 Change in Time 0.25 min Range 0 - ? psi

Group: Radium Well: Fleske-Hetzke Unit 1-1 (acquired on: 03/03/21 07:39:09)

| | | | |
|-----------------------|-------------|-------------------------------|------------------|
| Production Current | Potential | Casing Pressure | Producing |
| Oil -*- | -*- BBL/D | 8.6 psi (g) | |
| Water -*- | -*- BBL/D | Casing Pressure Buildup | Annular Gas Flow |
| Gas -*- | -*- Mscf/D | 0.0 psi | 0 Mscf/D |
| | | 0.25 min | % Liquid |
| IPR Method | Vogel | Gas/Liquid Interface Pressure | 100 % |
| PBHP/SBHP | -*- | 11.4 psi (g) | |
| Production Efficiency | 0.0 | Liquid Level Depth | |
| | | 3200.27 ft | |
| Oil 40 deg.API | | Pump Intake Depth | |
| Water 1.05 Sp.Gr.H2O | | 3871.00 ft | |
| Gas 1.07 Sp.Gr.AIR | | Formation Depth | |
| | | 3684.00 ft | |
| Acoustic Velocity | 907.75 ft/s | | |
| | | Pump Intake | |
| | | 240.0 psi (g) | |
| | | Producing BHP | |
| | | 177.0 psi (g) | |
| | | Static BHP | |
| | | -*- psi (g) | |

Formation Submergence
 Total Gaseous Liquid Column HT (TVD) 671 ft
 Equivalent Gas Free Liquid HT (TVD) 671 ft

Acoustic Test



Acoustic Velocity 907.75 ft/s Joints counted 99
 Joints Per Second 15.0091 jts/sec Joints to liquid level 105.829
 Depth to liquid level 3200.27 ft Filter Width 12.6628
 Automatic Collar Count Yes Time to 1st Collar 0.252 6.848

March 17, 2021

Loveness Mpanje
F. G. Holl Company L.L.C.
9431 E CENTRAL STE 100
WICHITA, KS 67206-2563

Re: Temporary Abandonment
API 15-145-21609-00-00
FLESKE/HETZKE UNIT 1-1
E/2 Sec.01-20S-16W
Pawnee County, Kansas

Dear Loveness Mpanje:

"Your temporary abandonment (TA) application for the well listed above has been approved. In accordance with K.A.R. 82-3-111 the TA status of this well will expire 03/17/2022.

- * If you return this well to service or plug it, please notify the District Office.
- * If you sell this well you are required to file a Transfer of Operator form, T-1.
- * If the well will remain temporarily abandoned, you must submit a new TA application, CP-111, before 03/17/2022.

You may contact me at the number above if you have questions.

Very truly yours,

Michael Maier"