

KANSAS CORPORATION COMMISSION
OIL & GAS CONSERVATION DIVISION

TEMPORARY ABANDONMENT WELL APPLICATION

OPERATOR: License#
Name:
Address 1:
Address 2:
City: State: Zip:
Contact Person:
Phone:
Contact Person Email:
Field Contact Person:
Field Contact Person Phone:

API No. 15-
Spot Description:
Sec. Twp. S. R.
feet from N / S Line of Section
feet from E / W Line of Section
GPS Location: Lat: , Long:
Datum: NAD27 NAD83 WGS84
County: Elevation: GL KB
Lease Name: Well #:
Well Type: Oil Gas OG WSW Other:
SWD Permit #: ENHR Permit #:
Gas Storage Permit #:
Spud Date: Date Shut-In:

Table with 7 columns: Conductor, Surface, Production, Intermediate, Liner, Tubing. Rows include Size, Setting Depth, Amount of Cement, Top of Cement, Bottom of Cement.

Casing Fluid Level from Surface: How Determined? Date:
Casing Squeeze(s): to w / sacks of cement, to w / sacks of cement. Date:
Do you have a valid Oil & Gas Lease? Yes No
Depth and Type: Junk in Hole at Tools in Hole at Casing Leaks: Yes No Depth of casing leak(s):
Type Completion: ALT. I ALT. II Depth of: DV Tool: w / sacks of cement Port Collar: w / sack of cement
Packer Type: Size: Inch Set at: Feet
Total Depth: Plug Back Depth: Plug Back Method:

Geological Data:

Table with 4 columns: Formation Name, Formation Top, Formation Base, Completion Information. Rows 1 and 2.

UNDER PENALTY OF PERJURY I HEREBY ATTEST THAT THE INFORMATION CONTAINED HEREIN IS TRUE AND CORRECT TO THE BEST OF MY KNOWLEDGE

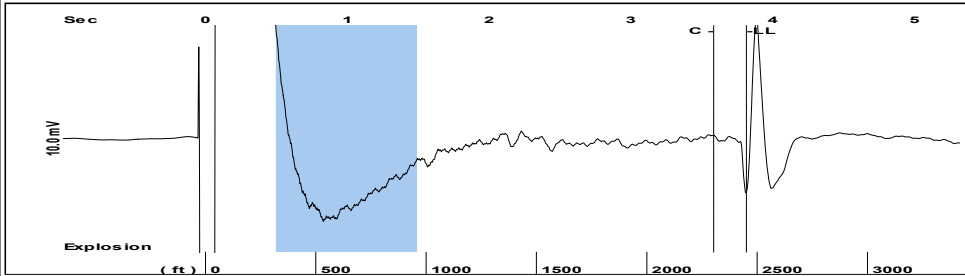
Submitted Electronically

Do NOT Write in This Space - KCC USE ONLY
Date Tested: Results: Date Plugged: Date Repaired: Date Put Back in Service:
Review Completed by: Comments:
TA Approved: Yes Denied Date:

Mail to the Appropriate KCC Conservation Office:

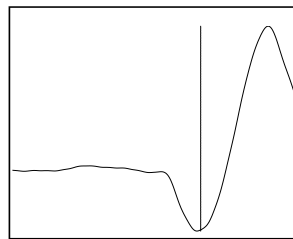
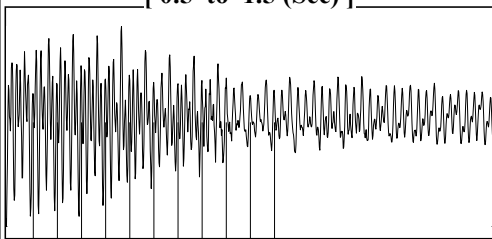
Table with 3 columns: District Office, Address, Phone. Rows for District Office #1, #2, #3, #4.

Group: MyWells Well: Arkalon #1-28 (acquired on: 03/03/21 11:22:30)



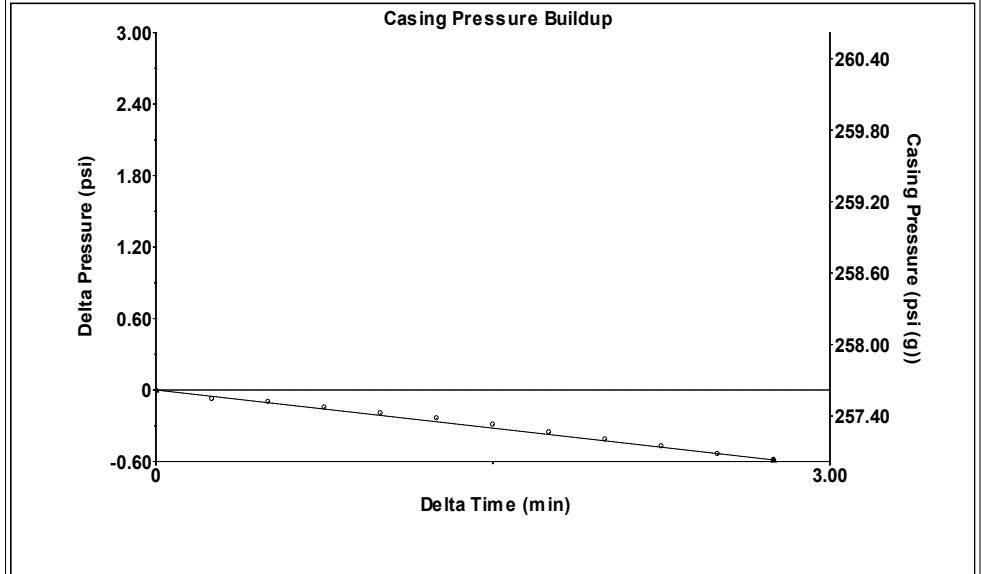
Filter Type High Pass Automatic Collar Count Yes Time 3.815 sec
 Manual Acoustic Velo 1275.15 ft/s Manual JTS/sec 20.202 Joints 77.659 Jts
 Depth 2450.92 ft

[0.5 to 1.5 (Sec)]



Analysis Method: Automatic

Group: MyWells Well: Arkalon #1-28 (acquired on: 03/03/21 11:22:30)

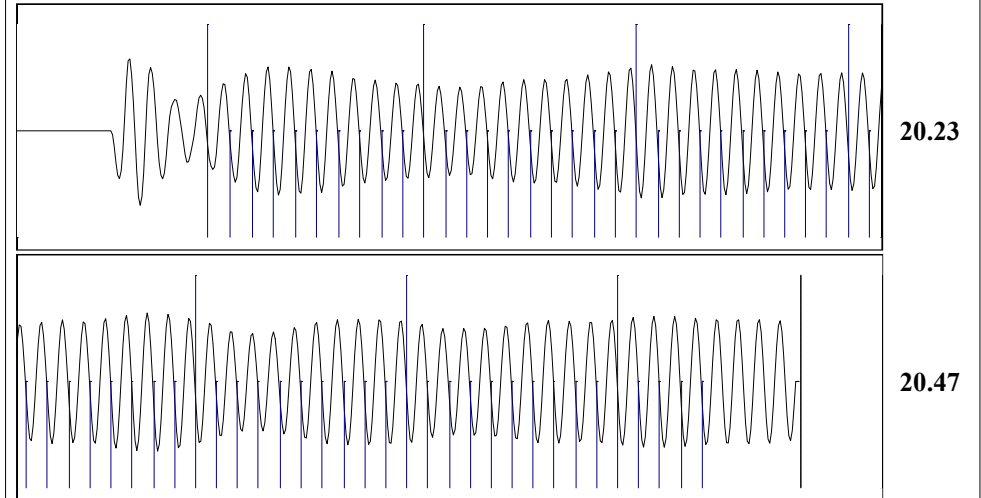


Change in Pressure -0.59 psi PT 17384
 Change in Time 2.75 min Range 0 - ? psi

Group: MyWells Well: Arkalon #1-28 (acquired on: 03/03/21 11:22:30)

Production					
Current	Potential	Casing Pressure	Producing		
Oil - *-	- *- BBL/D	257.6 psi (g)			
Water - *-	- *- BBL/D	Casing Pressure Buildup	Annular		
Gas - *-	- *- Mscf/D	-0.587 psi	Gas Flow	0 Mscf/D	
		2.75 min	% Liquid	100 %	
IPR Method	Vogel	Gas/Liquid Interface Pressure			
PBHP/SBHP	- *-	274.1 psi (g)			
Production Efficiency	0.0				
		Liquid Level Depth			
Oil 40 deg.API		2450.92 ft			
Water 1.05 Sp.Gr.H2O		Pump Intake Depth			
Gas 0.69 Sp.Gr.AIR		2473.00 ft			
Acoustic Velocity	1284.89 ft/s	Formation Depth			
		2473.00 ft			
Formation Submergence			Pump Intake		
Total Gaseous Liquid Column HT (TVD)	22 ft		281.5 psi (g)		
Equivalent Gas Free Liquid HT (TVD)	22 ft		Producing BHP		
			281.5 psi (g)		
Acoustic Test			Static BHP		
			- *- psi (g)		

Group: MyWells Well: Arkalon #1-28 (acquired on: 03/03/21 11:22:30)



Acoustic Velocity 1284.89 ft/s Joints counted 64
 Joints Per Second 20.3562 jts/sec Joints to liquid level 77.659
 Depth to liquid level 2450.92 ft Filter Width 18.202 22.202
 Automatic Collar Count Yes Time to 1st Collar 0.44 3.584

March 17, 2021

Melody C. Fletcher
Oil Producers Inc. of Kansas
1710 WATERFRONT PKWY
WICHITA, KS 67206-6603

Re: Temporary Abandonment
API 15-175-21222-00-00
ARKALON 1-28
SE/4 Sec.28-33S-32W
Seward County, Kansas

Dear Melody C. Fletcher:

"Your temporary abandonment (TA) application for the well listed above has been approved. In accordance with K.A.R. 82-3-111 the TA status of this well will expire 12/02/2021.

- * If you return this well to service or plug it, please notify the District Office.
- * If you sell this well you are required to file a Transfer of Operator form, T-1.
- * If the well will remain temporarily abandoned, you must submit a new TA application, CP-111, before 12/02/2021.

You may contact me at the number above if you have questions.

Very truly yours,

Michael Maier"