

KANSAS CORPORATION COMMISSION
OIL & GAS CONSERVATION DIVISION

TEMPORARY ABANDONMENT WELL APPLICATION

OPERATOR: License#
Name:
Address 1:
Address 2:
City: State: Zip:
Contact Person:
Phone:
Contact Person Email:
Field Contact Person:
Field Contact Person Phone:

API No. 15-
Spot Description:
Sec. Twp. S. R.
GPS Location: Lat: Long:
Datum: NAD27 NAD83 WGS84
County: Elevation:
Lease Name: Well #:
Well Type: Oil Gas OG WSW Other:
SWD Permit #: ENHR Permit #:
Gas Storage Permit #:
Spud Date: Date Shut-In:

Table with 7 columns: Conductor, Surface, Production, Intermediate, Liner, Tubing. Rows include Size, Setting Depth, Amount of Cement, Top of Cement, Bottom of Cement.

Casing Fluid Level from Surface: How Determined? Date:
Casing Squeeze(s): to w / sacks of cement, to w / sacks of cement. Date:
Do you have a valid Oil & Gas Lease? Yes No
Depth and Type: Junk in Hole at Tools in Hole at Casing Leaks: Yes No Depth of casing leak(s):
Type Completion: ALT. I ALT. II Depth of: DV Tool: w / sacks of cement Port Collar: w / sack of cement
Packer Type: Size: Inch Set at: Feet
Total Depth: Plug Back Depth: Plug Back Method:

Geological Data:

Table with 4 columns: Formation Name, Formation Top, Formation Base, Completion Information. Rows 1 and 2.

UNDER PENALTY OF PERJURY I HEREBY ATTEST THAT THE INFORMATION CONTAINED HEREIN IS TRUE AND CORRECT TO THE BEST OF MY KNOWLEDGE

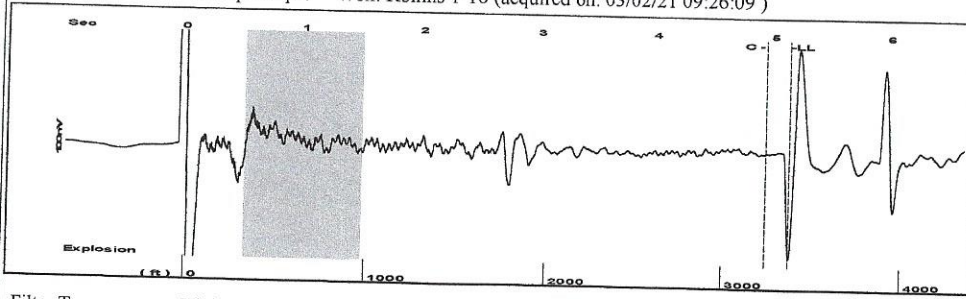
Submitted Electronically

Do NOT Write in This Space - KCC USE ONLY
Date Tested: Results: Date Plugged: Date Repaired: Date Put Back in Service:
Review Completed by: Comments:
TA Approved: Yes Denied Date:

Mail to the Appropriate KCC Conservation Office:

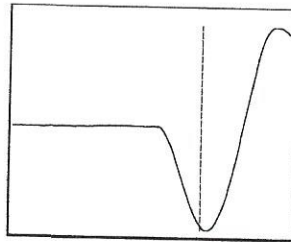
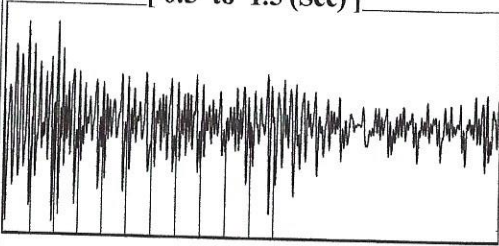
Table with 2 columns: Office Address, Phone. Rows for District Office #1, #2, #3, #4.

Group: Belpre Well: Rollins 1-16 (acquired on: 03/02/21 09:26:09 )



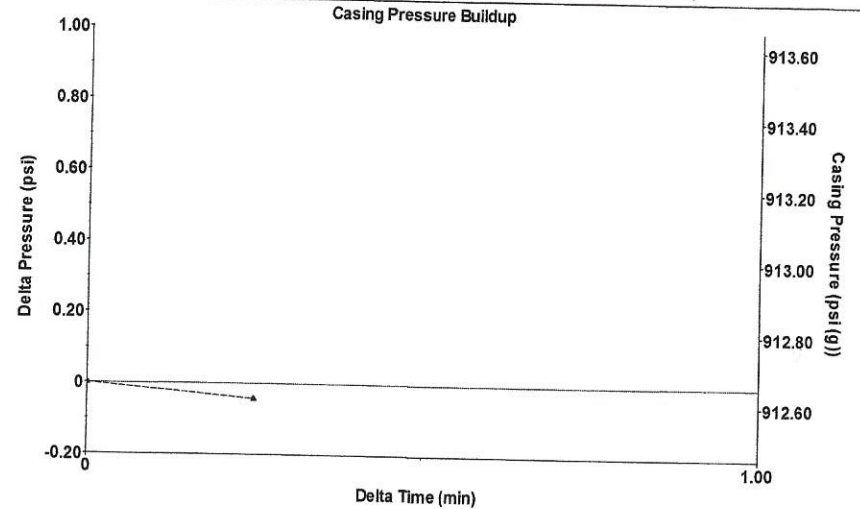
Filter Type High Pass Automatic Collar Count Yes Time 5.131 sec  
 Manual Acoustic Velo 1299.18 ft/s Manual JTS/sec 20.4918 Joints 106.342 Jts  
 Depth 3371.04 ft

[ 0.5 to 1.5 (Sec) ]



Analysis Method: Automatic

Group: Belpre Well: Rollins 1-16 (acquired on: 03/02/21 09:26:09 )



Change in Pressure -0.04 psi PT13440  
 Change in Time 0.25 min Range 0 - ? psi

Group: Belpre Well: Rollins 1-16 (acquired on: 03/02/21 09:26:09 )

Production Current Potential  
 Oil - \* - - \* - BBL/D  
 Water - \* - - \* - BBL/D  
 Gas - \* - - \* - Mscf/D

Casing Pressure 912.7 psi (g)  
 Casing Pressure Buildup -0.0 psi  
 0.25 min  
 Gas/Liquid Interface Pressure 990.9 psi (g)

Producing  
 Annular Gas Flow 0 Mscf/D  
 % Liquid 100 %

IPR Method Vogel  
 PBHP/SBHP - \* -  
 Production Efficiency 0.0

Oil 40 deg.API  
 Water 1.05 Sp.Gr.H2O  
 Gas 0.63 Sp.Gr.AIR

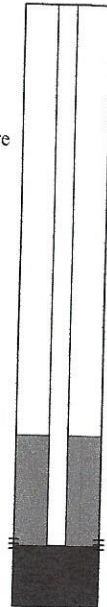
Acoustic Velocity 1313.99 ft/s

Liquid Level Depth 3371.04 ft  
 Pump Intake Depth 4375.00 ft  
 Formation Depth 4362.00 ft

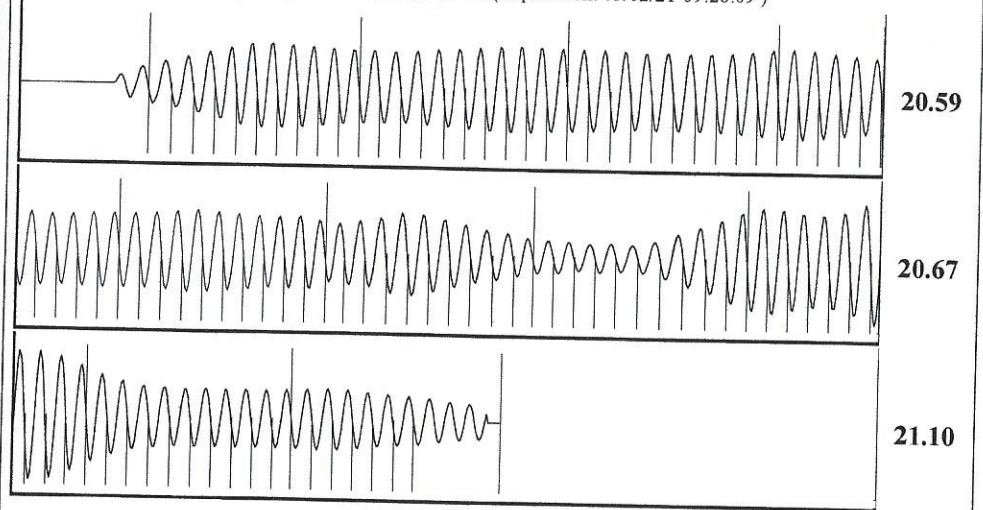
Pump Intake 1301.2 psi (g)  
 Producing BHP 1297.3 psi (g)  
 Static BHP - \* - psi (g)

Formation Submergence  
 Total Gaseous Liquid Column HT (TVD) 1004 ft  
 Equivalent Gas Free Liquid HT (TVD) 1004 ft

Acoustic Test



Group: Belpre Well: Rollins 1-16 (acquired on: 03/02/21 09:26:09 )



Acoustic Velocity 1313.99 ft/s Joints counted 96  
 Joints Per Second 20.7254 jts/sec Joints to liquid level 106.342  
 Depth to liquid level 3371.04 ft Filter Width 18.4918 22.4918  
 Automatic Collar Count Yes Time to 1st Collar 0.296 4.928

March 17, 2021

Loveness Mpanje  
F. G. Holl Company L.L.C.  
9431 E CENTRAL STE 100  
WICHITA, KS 67206-2563

Re: Temporary Abandonment  
API 15-047-21380-00-00  
ROLLINS 1-16  
NW/4 Sec.16-24S-17W  
Edwards County, Kansas

Dear Loveness Mpanje:

"Your temporary abandonment (TA) application for the well listed above has been approved. In accordance with K.A.R. 82-3-111 the TA status of this well will expire 03/17/2022.

- \* If you return this well to service or plug it, please notify the District Office.
- \* If you sell this well you are required to file a Transfer of Operator form, T-1.
- \* If the well will remain temporarily abandoned, you must submit a new TA application, CP-111, before 03/17/2022.

You may contact me at the number above if you have questions.

Very truly yours,

Michael Maier"