

KANSAS CORPORATION COMMISSION
OIL & GAS CONSERVATION DIVISION

TEMPORARY ABANDONMENT WELL APPLICATION

OPERATOR: License# _____
 Name: _____
 Address 1: _____
 Address 2: _____
 City: _____ State: _____ Zip: _____ + _____
 Contact Person: _____
 Phone:(_____) _____
 Contact Person Email: _____
 Field Contact Person: _____
 Field Contact Person Phone: (_____) _____

API No. 15- _____
 Spot Description: _____
 _____ - _____ - _____ - _____ Sec. _____ Twp. _____ S. R. _____ E W
 _____ feet from N / S Line of Section
 _____ feet from E / W Line of Section
 GPS Location: Lat: _____, Long: _____
(e.g. xx.xxxxx) (e.g. -xxx.xxxxx)
 Datum: NAD27 NAD83 WGS84
 County: _____ Elevation: _____ GL KB
 Lease Name: _____ Well #: _____
 Well Type: (check one) Oil Gas OG WSW Other: _____
 SWD Permit #: _____ ENHR Permit #: _____
 Gas Storage Permit #: _____
 Spud Date: _____ Date Shut-In: _____

	Conductor	Surface	Production	Intermediate	Liner	Tubing
Size						
Setting Depth						
Amount of Cement						
Top of Cement						
Bottom of Cement						

Casing Fluid Level from Surface: _____ How Determined? _____ Date: _____
 Casing Squeeze(s): _____ to _____ w / _____ sacks of cement, _____ to _____ w / _____ sacks of cement. Date: _____
(top) (bottom) (top) (bottom)
 Do you have a valid Oil & Gas Lease? Yes No
 Depth and Type: Junk in Hole at _____ Tools in Hole at _____ Casing Leaks: Yes No Depth of casing leak(s): _____
(depth) (depth)
 Type Completion: ALT. I ALT. II Depth of: DV Tool: _____ w / _____ sacks of cement Port Collar: _____ w / _____ sack of cement
(depth) (depth)
 Packer Type: _____ Size: _____ Inch Set at: _____ Feet
 Total Depth: _____ Plug Back Depth: _____ Plug Back Method: _____

Geological Data:

Formation Name	Formation Top	Formation Base	Completion Information
1. _____	At: _____	to _____ Feet	Perforation Interval _____ to _____ Feet or Open Hole Interval _____ to _____ Feet
2. _____	At: _____	to _____ Feet	Perforation Interval _____ to _____ Feet or Open Hole Interval _____ to _____ Feet

UNDER PENALTY OF PERJURY I HEREBY ATTEST THAT THE INFORMATION CONTAINED HEREIN IS TRUE AND CORRECT TO THE BEST OF MY KNOWLEDGE

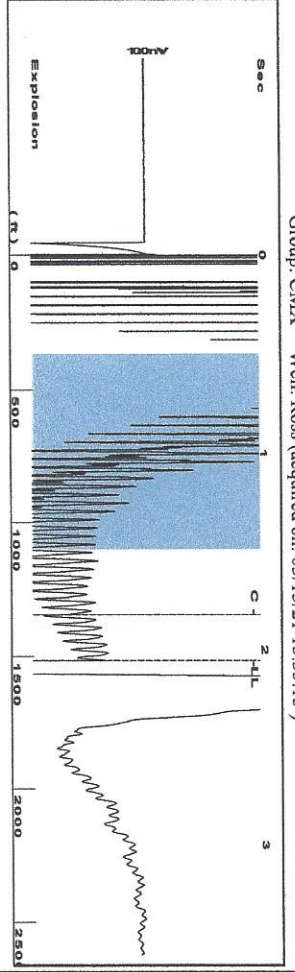
Submitted Electronically

Do NOT Write in This Space - KCC USE ONLY	Date Tested: _____	Results: _____	Date Plugged: _____	Date Repaired: _____	Date Put Back in Service: _____
	Review Completed by: _____ Comments: _____				
TA Approved: <input type="checkbox"/> Yes <input type="checkbox"/> Denied Date: _____					

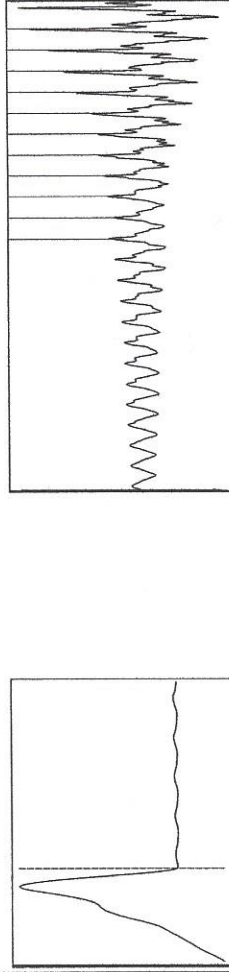
Mail to the Appropriate KCC Conservation Office:

	KCC District Office #1 - 210 E. Frontview, Suite A, Dodge City, KS 67801	Phone 620.682.7933
	KCC District Office #2 - 3450 N. Rock Road, Building 600, Suite 601, Wichita, KS 67226	Phone 316.337.7400
	KCC District Office #3 - 137 E. 21st St., Chanute, KS 66720	Phone 620.902.6450
	KCC District Office #4 - 2301 E. 13th Street, Hays, KS 67601-2651	Phone 785.261.6250

Group: CMX Well: Ross (acquired on: 03/13/21 13:35:13)



Filter Type High Pass
 Manual Acoustic Velocity 1467.59 ft/s
 Automatic Collar Count Yes
 Manual JTS/sec 23.1481
 Time 2:055 sec
 Joints 47.7907 J/s
 Depth 1514.97 ft



Analysis Method: Automatic

Group: CMX Well: Ross (acquired on: 03/13/21 13:35:13)

Production Current	Potential	Casing Pressure	Static
Oil -*- BBL/D	-*- BBL/D	5.4 psi (g)	Oil Column Height
Water -*- Mscf/D	-*- Mscf/D	-0.005 psi	MD 0 ft
Gas -*-	-*-	0.25 min	
IPR Method Vogel	Vogel	Gas/Liquid Interface Pressure	
PBHP/SBHP -*-	-*-	5.9 psi (g)	
Production Efficiency 0.0			
Oil 40 deg API		Liquid Level Depth	Water Column Height
Water 1.05 Sp.Gr:H2O		1514.97 ft	MD 3485 ft
Gas 0.55 Sp.Gr:AIR		Pump Intake Depth	
		5000.00 ft	
		Formation Depth	
		5000.00 ft	
Acoustic Velocity 1474.42 ft/s			Static BHP
			1590.4 psi (g)

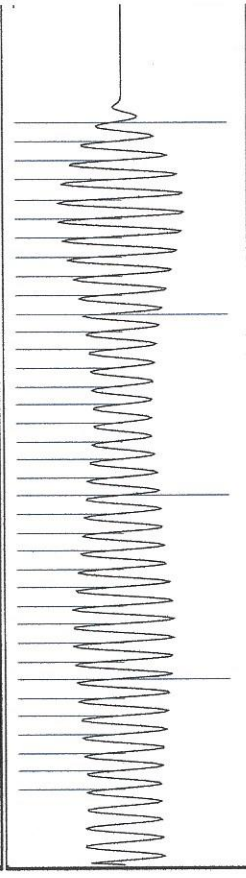


Group: CMX Well: Ross (acquired on: 03/13/21 13:35:13)

NO PRESSURE DATA AVAILABLE

Change in Pressure 0.00 psi PT8496
 Change in Time 0.00 min Range 0 - ? psi

Group: CMX Well: Ross (acquired on: 03/13/21 13:35:13)



Acoustic Velocity	1474.42 ft/s	Joints counted	36
Joints Per Second	23.2558 Jts/sec	Joints to liquid level	47.7907
Depth to liquid level	1514.97 ft	Filter Width	21.1481
Automatic Collar Count	Yes	Time to 1st Collar	0.276
			25.1481
			1.824

March 17, 2021

Douglas H McGinness II
CMX, Inc.
9330 E CENTRAL SUITE 300
WICHITA, KS 67206-6610

Re: Temporary Abandonment
API 15-097-21689-00-00
ROSS 1-31
NE/4 Sec.31-27S-16W
Kiowa County, Kansas

Dear Douglas H McGinness II:

"Your temporary abandonment (TA) application for the well listed above has been approved. In accordance with K.A.R. 82-3-111 the TA status of this well will expire 03/17/2022.

- * If you return this well to service or plug it, please notify the District Office.
- * If you sell this well you are required to file a Transfer of Operator form, T-1.
- * If the well will remain temporarily abandoned, you must submit a new TA application, CP-111, before 03/17/2022.

You may contact me at the number above if you have questions.

Very truly yours,

Michael Maier"