

KANSAS CORPORATION COMMISSION
OIL & GAS CONSERVATION DIVISION

TEMPORARY ABANDONMENT WELL APPLICATION

OPERATOR: License#
Name:
Address 1:
Address 2:
City: State: Zip:
Contact Person:
Phone:
Contact Person Email:
Field Contact Person:
Field Contact Person Phone:

API No. 15-
Spot Description:
Sec. Twp. S. R.
GPS Location: Lat, Long
Datum: NAD27, NAD83, WGS84
County: Elevation:
Lease Name: Well #:
Well Type: Oil, Gas, OG, WSW, Other
SWD Permit #: ENHR Permit #:
Gas Storage Permit #:
Spud Date: Date Shut-In:

Table with 7 columns: Conductor, Surface, Production, Intermediate, Liner, Tubing. Rows include Size, Setting Depth, Amount of Cement, Top of Cement, Bottom of Cement.

Casing Fluid Level from Surface: How Determined? Date:
Casing Squeeze(s): to w / sacks of cement, to w / sacks of cement. Date:
Do you have a valid Oil & Gas Lease? Yes No
Depth and Type: Junk in Hole at Tools in Hole at Casing Leaks: Yes No Depth of casing leak(s):
Type Completion: ALT. I ALT. II Depth of: DV Tool: w / sacks of cement Port Collar: w / sack of cement
Packer Type: Size: Inch Set at: Feet
Total Depth: Plug Back Depth: Plug Back Method:

Geological Data:

Table with 4 columns: Formation Name, Formation Top, Formation Base, Completion Information. Rows 1 and 2.

UNDER PENALTY OF PERJURY I HEREBY ATTEST THAT THE INFORMATION CONTAINED HEREIN IS TRUE AND CORRECT TO THE BEST OF MY KNOWLEDGE

Submitted Electronically

Do NOT Write in This Space - KCC USE ONLY
Date Tested: Results: Date Plugged: Date Repaired: Date Put Back in Service:
Review Completed by: Comments:
TA Approved: Yes Denied Date:

Mail to the Appropriate KCC Conservation Office:

Map of Kansas with 4 numbered districts. Table with 2 columns: Office Address, Phone Number.

WELL BORE DIAGRAM - EXISTING

Field: Capstone, East

Date: 3-10-20

**Janzen Unit 1-1**

API: 15-171-21069

SE SE NE SE Sec 1-17S-34W

Scott Co. KS

**Present Status:** Shut-in

Elev KB: 3102'

GL: 3091'

**Surface Csg:**

8 5/8" 23# LS STC @ 267' in 12 1/4" hole  
Cmt'd w/210 sx, cmt circ to surface

DV Tool @ 2416-18' (CBL)  
Cmt 2nd Stage w/400 sx  
cmt circ to surface

TOC 1st Stage @ 3858' (CBL)

Marmaton Pfs: 4438-48' (2 spf)

Fort Scott Pfs: 4578-80' (2 spf)

Fort Scott Pfs: 4583-85' (2 spf)

Johnson Zn Pfs: 4683-85' (2 spf)

Johnson Zn Pfs: 4694-97' (2 spf)

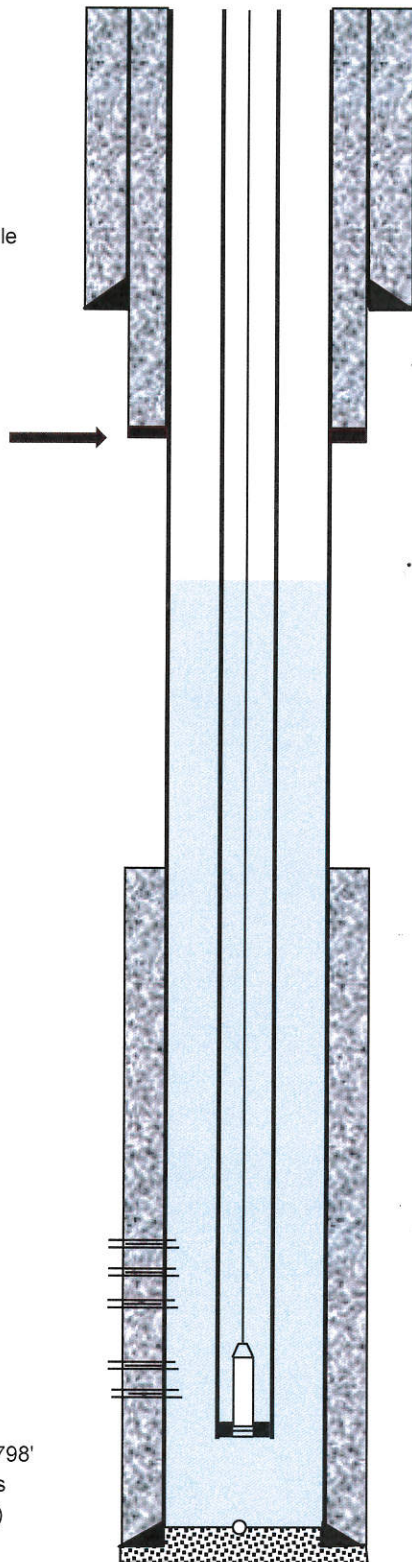
**LS Prod Csg:** 5 1/2" 15.5# S-55 @ 4798'

Cmt 1st Stage w/150 sxs

PBTD: 4755' PBTD (5 1/2" Baffle)

4753' PBTD (CBL)

TD: 4820' (4823' logger)



**Rod Data:**

- 1 1/2" x 22' PR w/12' Liner
- 4' - 7/8" pony rod (grade D)
- 1,800' - 7/8" rods (grade D)
- 2,675' - 3/4" rods (grade D)
- 225' - 1 1/2" sinker bars
- 3' - 3/4" rod stabilizer
- 2 3/4" x 1.25" x 16' VSP pump (113' max stroke)
- no strainer nipple

Fluid Level = 2185' (3-05-21)

149 joints 2 3/8" tubing

**5 Radial Jets made in Marmaton**

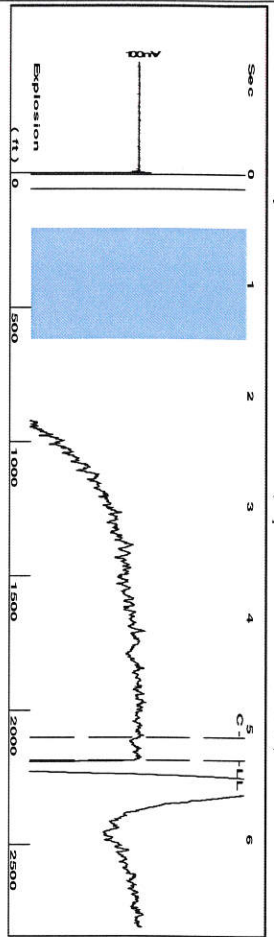
7/8" dia entry holes cut in casing

Depth	Orientation	Length
4439'	322°	700'
4440'	310°	700'
4440'	340°	700'
4441'	344°	700'
4441'	315°	700'

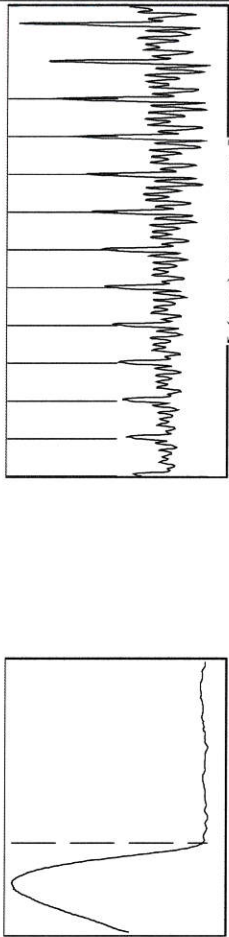
2 3/8" SN @ 4742'

EOT @ 4743'

Note: Casing set 25' above logger TD @ 4823'

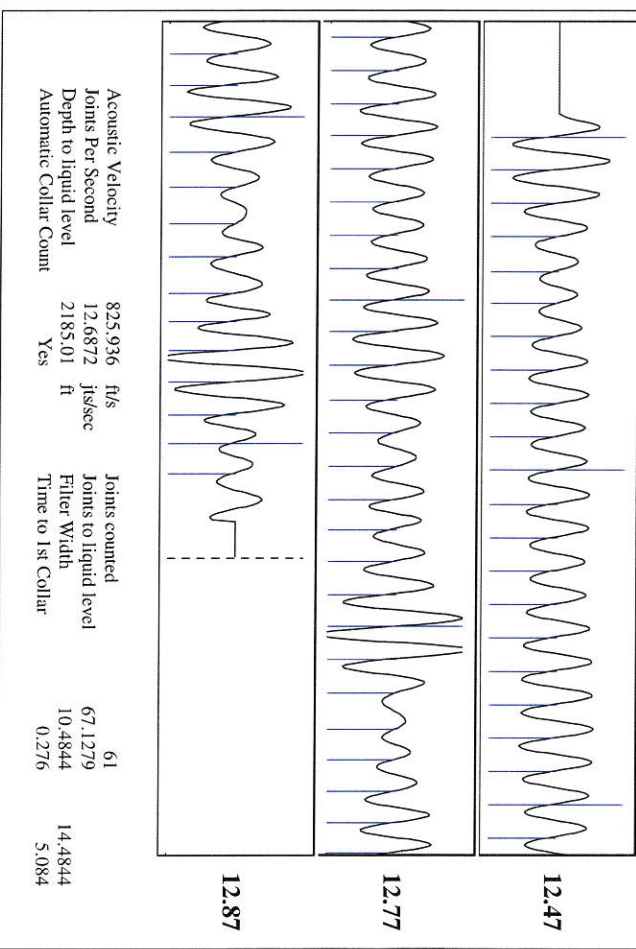
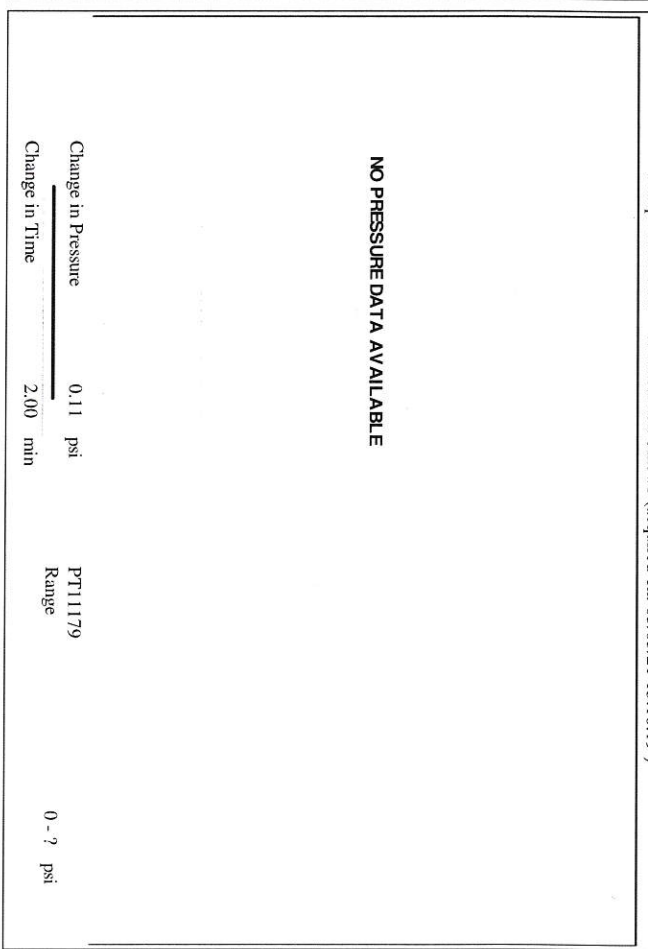
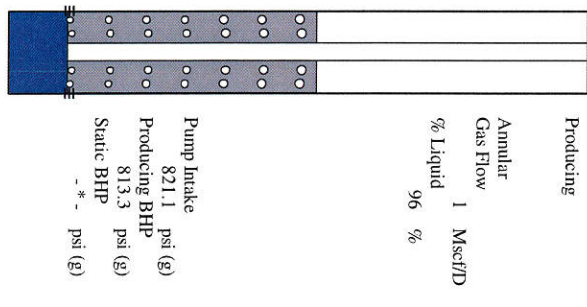


Filter Type High Pass Automatic Collar Count Yes  
 Manual Acoustic Velocity 812.734 f/s Manual JTS/sec 12.4844  
 Time 5.291 sec  
 Joints 67.1279 Jts  
 Depth 2185.01 ft



**Analysis Method: Automatic**

<b>Production</b>	<b>Potential</b>	<b>Casing Pressure</b>	<b>Producing</b>
Current	-* - BBL/D	17.5 psi (g)	Annular
Oil	-* - BBL/D	Casing Pressure Buildup	Gas Flow
Water	-* - BBL/D	0.1 psi	1 Mscf/D
Gas	-* - Mscf/D	2.00 min	% Liquid
PPR Method	Vogel	Gas/Liquid Interface Pressure	96 %
PBHP/SBHP	-* -	20.4 psi (g)	
Production Efficiency	0.0		
Oil	40 deg API	Liquid Level Depth	
Water	1.05 Sp.Gr:H2O	2185.01 ft	
Gas	1.13 Sp.Gr:AIR	Pump Intake Depth	
Acoustic Velocity	825.936 f/s	4722.00 ft	
		Formation Depth	
		4697.00 ft	
Formation Submergence			
Total Gaseous Liquid Column HT (TVD)			
Equivalent Gas Free Liquid HT (TVD)			
Acoustic Test			



Acoustic Velocity 825.936 f/s Joints counted 61  
 Joints Per Second 12.6872 Jts/sec Joints to liquid level 67.1279  
 Depth to liquid level 2185.01 ft Filter Width 10.4844  
 Automatic Collar Count Yes Time to 1st Collar 0.276 14.4844  
 5.084

Conservation Division  
District Office No. 1  
210 E. Frontview, Suite A  
Dodge City, KS 67801



Phone: 620-682-7933  
<http://kcc.ks.gov/>

Andrew J. French, Chairperson  
Dwight D. Keen, Commissioner  
Susan K. Duffy, Commissioner

Laura Kelly, Governor

March 17, 2021

Jeff Wood  
Landmark Resources, Inc.  
4900 WOODWAY DR SUITE 880  
HOUSTON, TX 77056-1881

Re: Temporary Abandonment  
API 15-171-21069-00-00  
JANZEN UNIT 1-1  
SE/4 Sec.01-17S-34W  
Scott County, Kansas

Dear Jeff Wood :

"Your temporary abandonment (TA) application for the well listed above has been approved. In accordance with K.A.R. 82-3-111 the TA status of this well will expire 03/17/2022.

- \* If you return this well to service or plug it, please notify the District Office.
- \* If you sell this well you are required to file a Transfer of Operator form, T-1.
- \* If the well will remain temporarily abandoned, you must submit a new TA application, CP-111, before 03/17/2022.

You may contact me at the number above if you have questions.

Very truly yours,

Michael Maier"