

KANSAS CORPORATION COMMISSION
OIL & GAS CONSERVATION DIVISION

TEMPORARY ABANDONMENT WELL APPLICATION

OPERATOR: License#
Name:
Address 1:
Address 2:
City: State: Zip:
Contact Person:
Phone:
Contact Person Email:
Field Contact Person:
Field Contact Person Phone:

API No. 15-
Spot Description:
Sec. Twp. S. R.
feet from N / S Line of Section
feet from E / W Line of Section
GPS Location: Lat: , Long:
Datum: NAD27 NAD83 WGS84
County: Elevation: GL KB
Lease Name: Well #:
Well Type: Oil Gas OG WSW Other:
SWD Permit #: ENHR Permit #:
Gas Storage Permit #:
Spud Date: Date Shut-In:

Table with 7 columns: Conductor, Surface, Production, Intermediate, Liner, Tubing. Rows include Size, Setting Depth, Amount of Cement, Top of Cement, Bottom of Cement.

Casing Fluid Level from Surface: How Determined? Date:
Casing Squeeze(s): to w / sacks of cement, to w / sacks of cement. Date:
Do you have a valid Oil & Gas Lease? Yes No
Depth and Type: Junk in Hole at Tools in Hole at Casing Leaks: Yes No Depth of casing leak(s):
Type Completion: ALT. I ALT. II Depth of: DV Tool: w / sacks of cement Port Collar: w / sack of cement
Packer Type: Size: Inch Set at: Feet
Total Depth: Plug Back Depth: Plug Back Method:

Geological Data:

Table with 4 columns: Formation Name, Formation Top, Formation Base, Completion Information. Rows 1 and 2.

UNDER PENALTY OF PERJURY I HEREBY ATTEST THAT THE INFORMATION CONTAINED HEREIN IS TRUE AND CORRECT TO THE BEST OF MY KNOWLEDGE

Submitted Electronically

Do NOT Write in This Space - KCC USE ONLY
Date Tested: Results: Date Plugged: Date Repaired: Date Put Back in Service:
Review Completed by: Comments:
TA Approved: Yes Denied Date:

Mail to the Appropriate KCC Conservation Office:

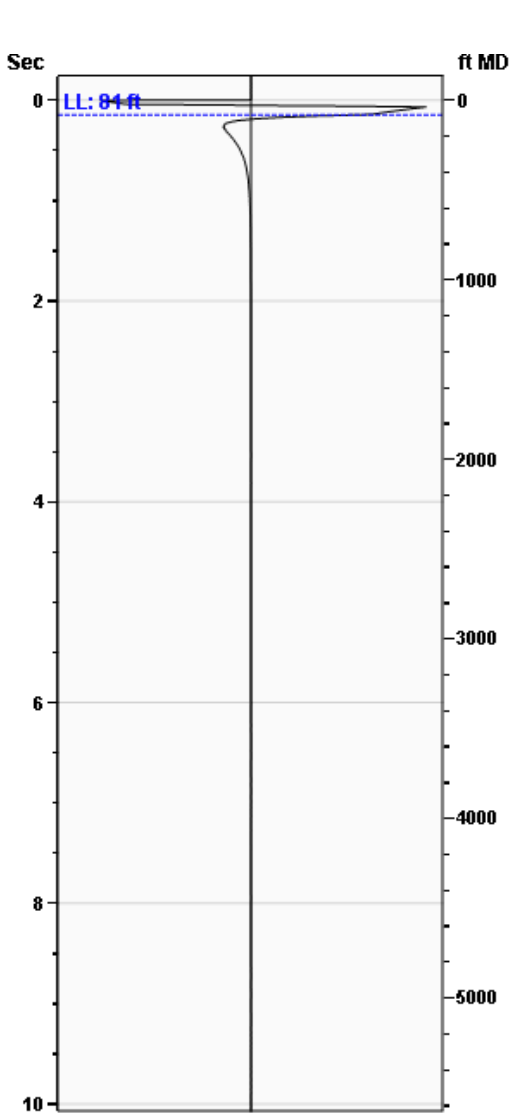
Table with 2 columns: Office Address, Phone. Rows for District Office #1, #2, #3, #4.

Liquid Level

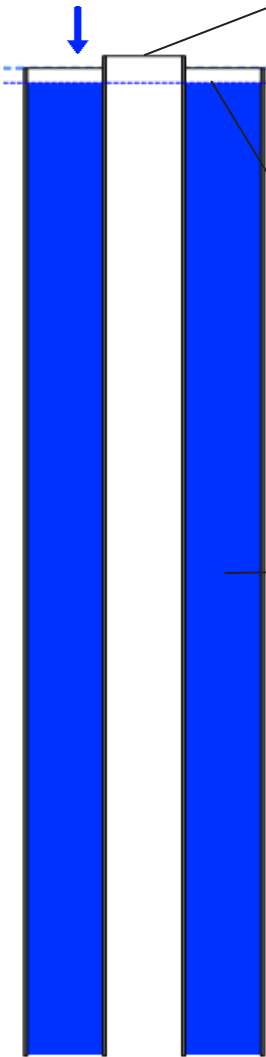
81 ft MD

Fluid Above Tubing
Gas Free Above Tubing

.* ft TVD
.* ft TVD



Gun - WG 3243



Production

Date Entered	12/08/20		
	Current	Potential	
Oil	.*	.*	BBL/D
Water	.*	.*	BBL/D
Gas	.*	.*	Mscf/D
IPR Method	Vogel		
PBHP/SBHP	1.00		
Producing Efficiency	0.00%		

Casing Pressure

Pressure	-0.4 psi (g)
----------	--------------

Annular Gas Flow

Gas Flow	.* Mscf/D
----------	-----------

Fluid Properties

% Liquid Above Tubing	100.00%
% Liquid Below Tubing	.*

Depths

Tubing Depth	5500 ft
Formation Depth	0 ft

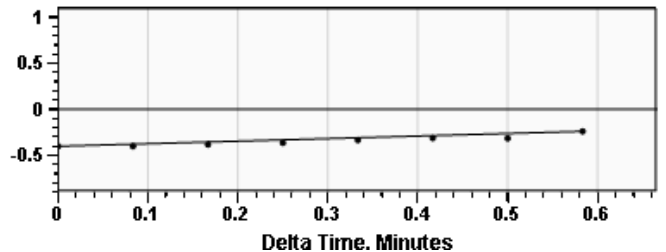
Wellbore Pressures

TIP	.*
PBHP	.*
SBHP	.*
Gas/Liq Interface	.*

Acoustic Velocity

Surface Temp	70 deg F	0.00% CO2
Bottomhole Temp	150 deg F	0.00% N2
Pressure	-0.4 psi (g)	0.00% H2S
Gas Gravity	0.9220 Air = 1	
Acoustic Velocity	1118 ft/s	
Joints Per Sec.	17.64 Jts/sec	
Joints To Liquid	2.56 Jts	
Calculated From Known Gas Specific Gravity		

Casing Pressure Buildup



Casing Pressure	-0.4 psi (g)
Buildup	0.2 psi (g)
Buildup Time	35 sec
Gas Gravity from Acoustic Velocity	0.9220 Air = 1

Comments and Recommendations

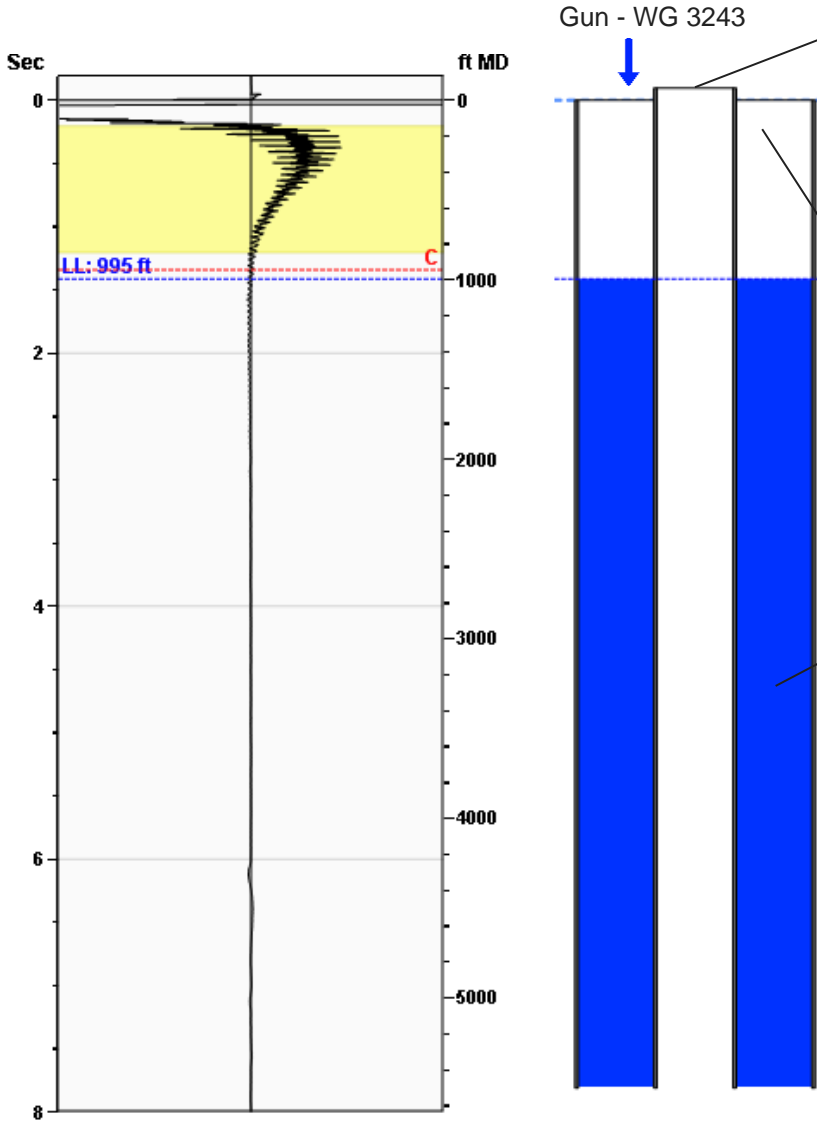
Fluid Level Diagnostics LLC
603 S 6th St.
Kiowa KS, 67070
620-886-1816

Liquid Level

995 ft MD

Fluid Above Tubing
Gas Free Above Tubing

.* ft TVD
.* ft TVD



Production			
Date Entered	12/08/20		
	Current	Potential	
Oil	.*	.*	BBL/D
Water	.*	.*	BBL/D
Gas	.*	.*	Mscf/D
IPR Method	Vogel		
PBHP/SBHP	1.00		
Producing Efficiency	0.00%		

Casing Pressure	
Pressure	-0.0 psi (g)

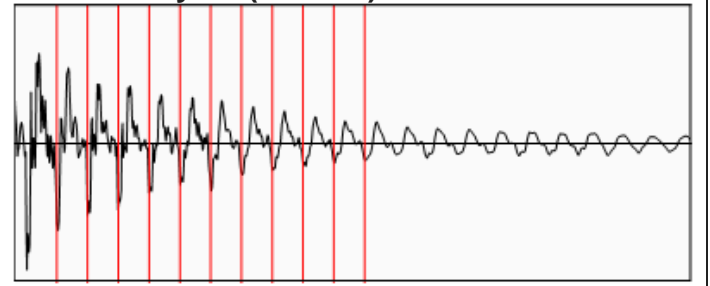
Annular Gas Flow	
Gas Flow	.* Mscf/D

Fluid Properties	
% Liquid Above Tubing	100.00%
% Liquid Below Tubing	.*

Depths	
Tubing Depth	5500 ft
Formation Depth	0 ft

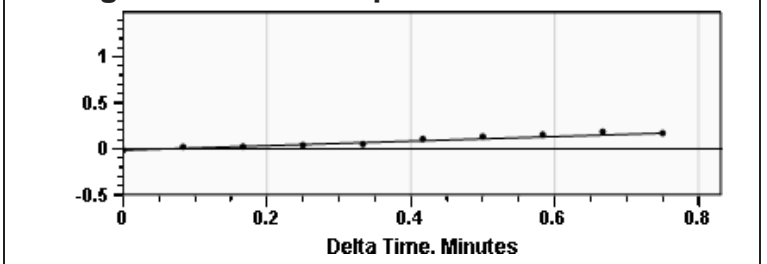
Wellbore Pressures	
TIP	.*
PBHP	.*
SBHP	.*
Gas/Liq Interface	.*

Collar Analysis (Manual)



Average Acoustic Velocity 1409 ft/s
Average Joints Per Sec. 22.22 Jts/sec
Joints To Liquid 31.38 Jts

Casing Pressure Buildup



Casing Pressure Buildup -0.0 psi (g)
Buildup 0.2 psi (g)
Buildup Time 45 sec
Gas Gravity from Collar Analysis (Manual) 0.5936 Air = 1

Comments and Recommendations

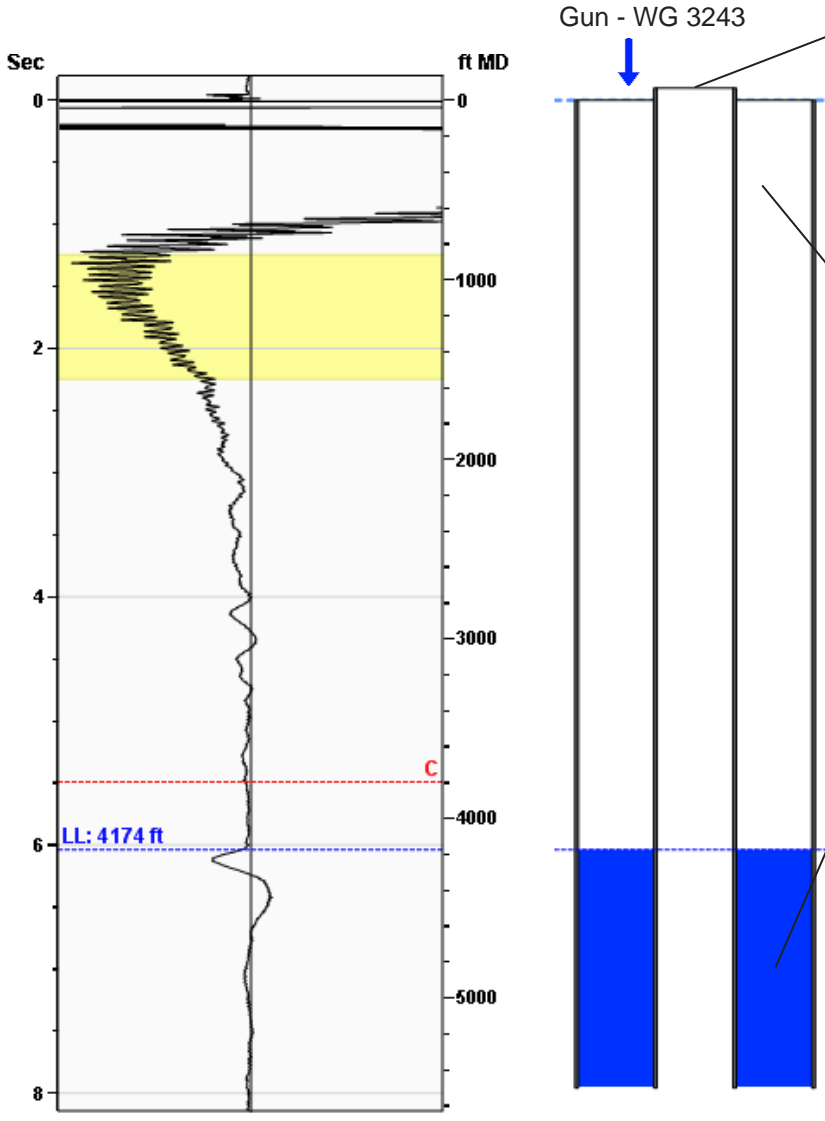
Fluid Level Diagnostics LLC
603 S 6th St.
Kiowa KS, 67070
620-886-1816

Liquid Level

4174 ft MD

Fluid Above Tubing
Gas Free Above Tubing

** ft TVD
** ft TVD



Production

Date Entered 12/08/20

	Current	Potential	
Oil	**	**	BBL/D
Water	**	**	BBL/D
Gas	**	**	Mscf/D

IPR Method Vogel
PBHP/SBHP 1.00
Producing Efficiency 0.00%

Casing Pressure

Pressure 0.4 psi (g)

Annular Gas Flow

Gas Flow ** Mscf/D

Fluid Properties

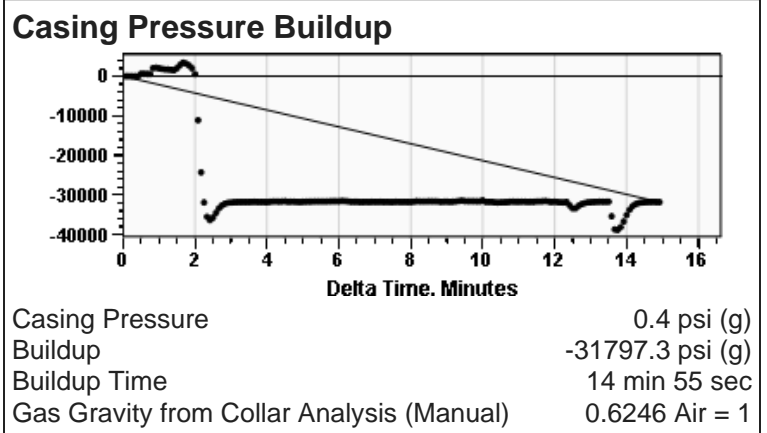
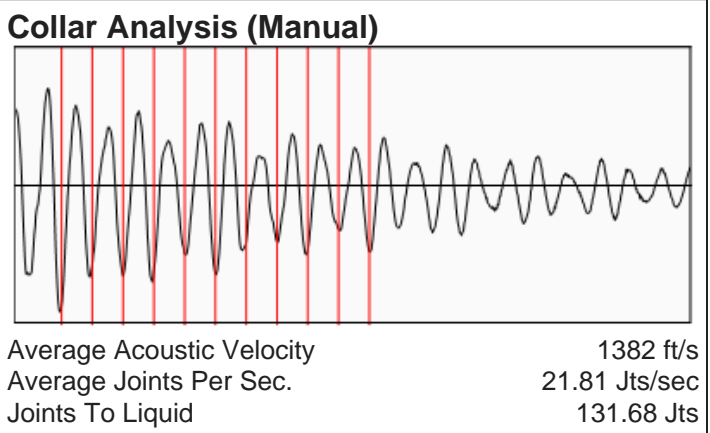
% Liquid Above Tubing 100.00%
% Liquid Below Tubing **

Depths

Tubing Depth 5500 ft
Formation Depth 0 ft

Wellbore Pressures

TIP **
PBHP **
SBHP **
Gas/Liq Interface **



Comments and Recommendations

Fluid Level Diagnostics LLC
603 S 6th St.
Kiowa KS, 67070
620-886-1816

Conservation Division
District Office No. 1
210 E. Frontview, Suite A
Dodge City, KS 67801



Phone: 620-682-7933
<http://kcc.ks.gov/>

Andrew J. French, Chairperson
Dwight D. Keen, Commissioner
Susan K. Duffy, Commissioner

Laura Kelly, Governor

March 23, 2021

Curtis Clark
Clark, Curtis dba Clark Exploration Co.
120 S CLERMONT ST
DENVER, CO 80246-1037

Re: Temporary Abandonment
API 15-007-22428-00-01
BALLET 12
NE/4 Sec.06-35S-15W
Barber County, Kansas

Dear Curtis Clark:

"Your temporary abandonment (TA) application for the well listed above has been approved. In accordance with K.A.R. 82-3-111 the TA status of this well will expire 03/23/2022.

- * If you return this well to service or plug it, please notify the District Office.
- * If you sell this well you are required to file a Transfer of Operator form, T-1.
- * If the well will remain temporarily abandoned, you must submit a new TA application, CP-111, before 03/23/2022.

You may contact me at the number above if you have questions.

Very truly yours,

Michael Maier"