

TRILOBITE TESTING, INC.

DRILL STEM TEST REPORT

Palomino Petroleum Inc.

8 19s 25w Ness

4924 SE 84th St
New ton KS 67114-8827

H2 Unit # 1

Job Ticket: 51542 **DST#: 1**

ATTN: Ryan Seib 785 798 53

Test Start: 2012.12.19 @ 00:45:00

GENERAL INFORMATION:

Formation: **Marmaton**

Deviated: No Whipstock: 2534.00 ft (KB)

Time Tool Opened: 04:16:20

Time Test Ended: 08:30:00

Test Type: Conventional Bottom Hole (Initial)

Tester: Jim Svaty

Unit No: 41

Interval: **4212.00 ft (KB) To 4350.00 ft (KB) (TVD)**

Total Depth: 4350.00 ft (KB) (TVD)

Hole Diameter: 7.88 inches Hole Condition: Fair

Reference Elevations: 2534.00 ft (KB)

2524.00 ft (CF)

KB to GRVCF: 10.00 ft

Serial #: 6752

Inside

Press@RunDepth: 305.49 psig @ 4221.00 ft (KB)

Start Date: 2012.12.19

End Date:

2012.12.19

Start Time: 00:45:01

End Time:

08:29:30

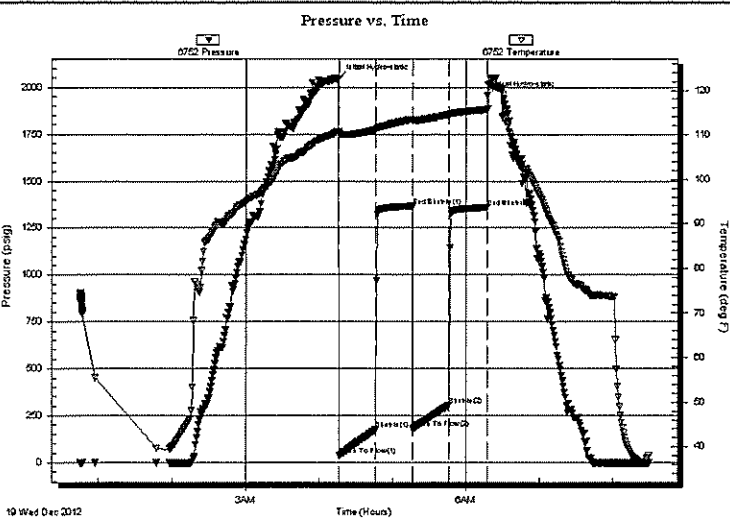
Capacity: 8000.00 psig

Last Calib.: 2012.12.19

Time On Btm: 2012.12.19 @ 04:16:00

Time Off Btm: 2012.12.19 @ 06:17:10

TEST COMMENT: 30-IFP- BOB in 8 min.
30-ISIP- No Blow
30-FFP- BOB in 11 min.
30-FSIP- No Blow



PRESSURE SUMMARY

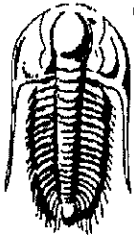
Time (Min.)	Pressure (psig)	Temp (deg F)	Annotation
0	2048.01	110.67	Initial Hydro-static
1	35.17	110.32	Open To Flow (1)
31	174.62	111.16	Shut-In(1)
61	1363.10	113.42	End Shut-In(1)
61	179.89	113.23	Open To Flow (2)
91	305.49	114.44	Shut-In(2)
121	1358.01	115.64	End Shut-In(2)
122	1954.84	115.83	Final Hydro-static

Recovery

Length (ft)	Description	Volume (bbl)
598.00	MCVW 10% m 90% w	8.39

Gas Rates

Choke (inches)	Pressure (psig)	Gas Rate (Mcf/d)



**TRILOBITE
TESTING, INC**

DRILL STEM TEST REPORT

FLUID SUMMARY

Palomino Petroleum Inc.

8 19s 25w Ness

4924 SE 84th St
New ton KS 67114-8827

H2 Unit # 1

Job Ticket: 51542

DST#: 1

ATTN: Ryan Seib 785 798 53

Test Start: 2012.12.19 @ 00:45:00

Mud and Cushion Information

Mud Type: Gel Chem

Cushion Type:

Oil API:

deg API

Mud Weight: 9.00 lb/gal

Cushion Length: ft

Water Salinity: 125000 ppm

Viscosity: 46.00 sec/qt

Cushion Volume: bbl

Water Loss: 5.60 in³

Gas Cushion Type:

Resistivity: ohm.m

Gas Cushion Pressure: psig

Salinity: 4400.00 ppm

Filter Cake: 4.00 inches

Recovery Information

Recovery Table

Length ft	Description	Volume bbl
598.00	MCW 10% m 90% w	8.388

Total Length: 598.00 ft

Total Volume: 8.388 bbl

Num Fluid Samples: 0

Num Gas Bombs: 0

Serial #:

Laboratory Name:

Laboratory Location:

Recovery Comments: .130 @ 37

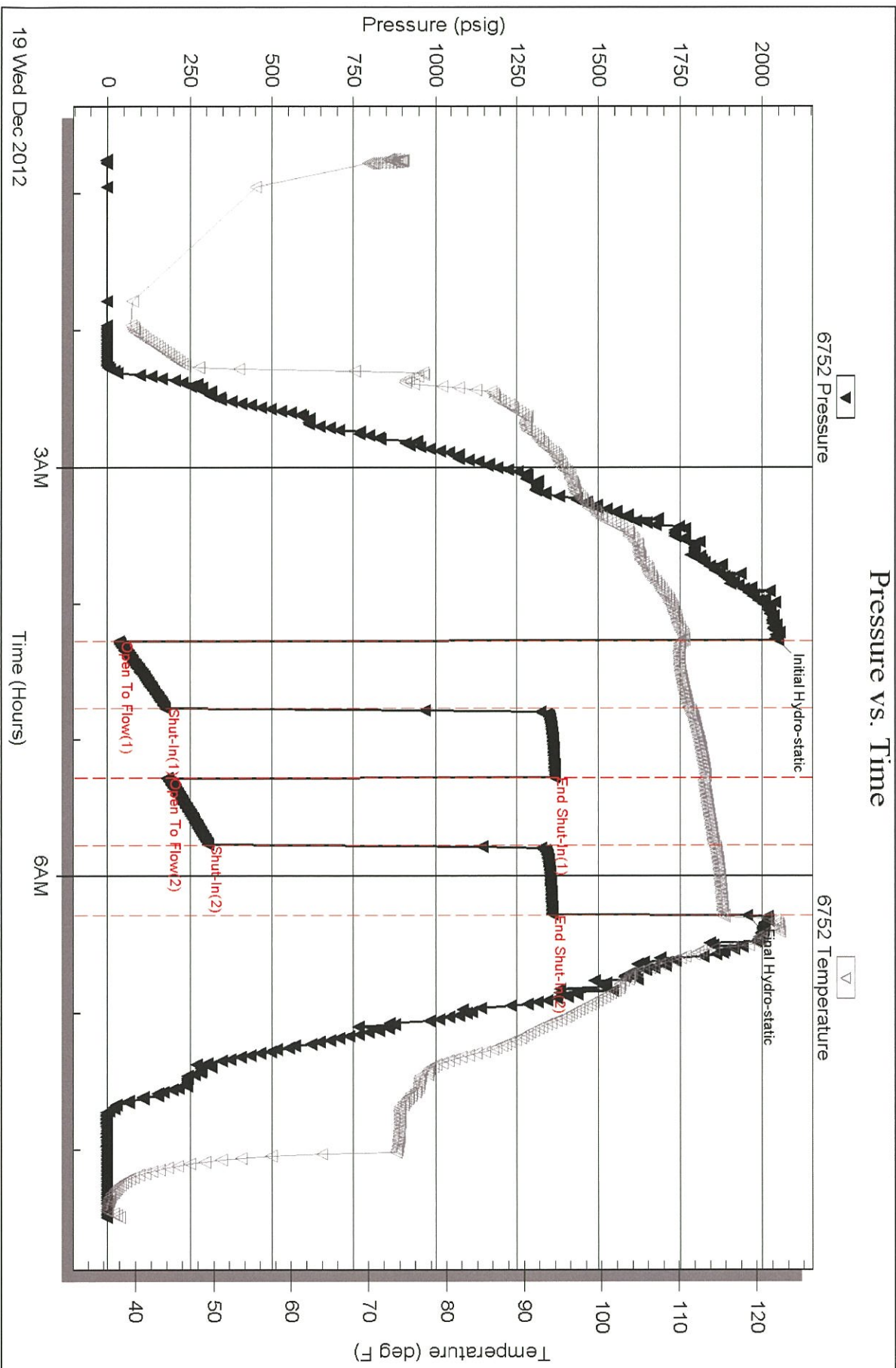
Serial #: 6752

Inside

Palomino Petroleum Inc.

H2 Unit # 1

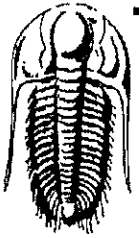
DST Test Number: 1



Trilobe Testing, Inc

Ref. No: 51542

Printed: 2012.12.19 @ 09:02:10



**TRILOBITE
TESTING, INC.**

DRILL STEM TEST REPORT

Palomino Petroleum Inc.

8 19s 25w Ness

4924 SE 84th St
New ton KS 67114-8827

H2 Unit # 1

Job Ticket: 51569

DST#: 2

ATTN: Ryan Seib 785 798 53

Test Start: 2012.12.20 @ 14:55:00

GENERAL INFORMATION:

Formation: **Miss**

Deviated: No Whipstock: 2534.00 ft (KB)

Time Tool Opened: 18:17:30

Time Test Ended: 00:07:19

Test Type: Conventional Straddle (Reset)

Tester: Cody Bloedorn

Unit No: 41

Interval: **4430.00 ft (KB) To 4529.00 ft (KB) (TVD)**

Total Depth: 4620.00 ft (KB) (TVD)

Hole Diameter: 7.88 inches Hole Condition: Fair

Reference Elevations: 2534.00 ft (KB)

2524.00 ft (CF)

KB to GR/CF: 10.00 ft

Serial #: 8322

Inside

Press@RunDepth: 706.09 psig @ 4500.00 ft (KB)

Start Date: 2012.12.20 End Date: 2012.12.21

Start Time: 14:55:01 End Time: 00:07:19

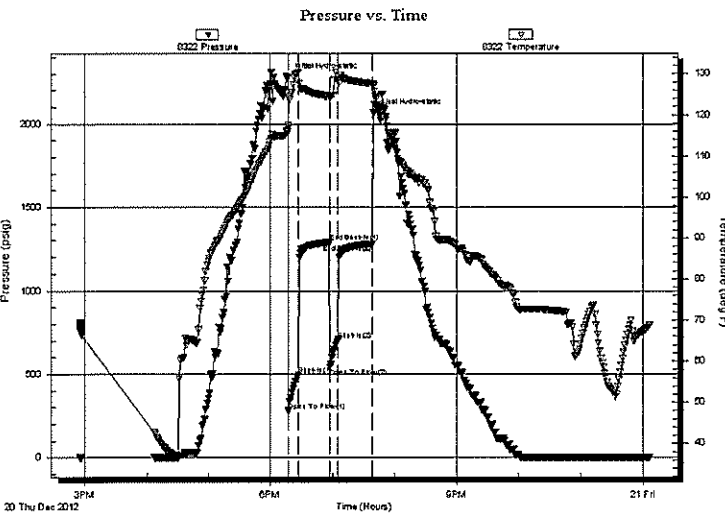
Capacity: 8000.00 psig

Last Calib.: 2012.12.21

Time On Btm: 2012.12.20 @ 18:17:00

Time Off Btm: 2012.12.20 @ 19:39:39

TEST COMMENT: 10 - IF- B.O.B. in 1 Minute
30 - IS- Surface blow back after 6 Minutes
10 - FF- B.O.B. in 1 Minute
30 - FS- Surface blow back at 3 Minutes



PRESSURE SUMMARY

Time (Min.)	Pressure (psig)	Temp (deg F)	Annotation
0	2279.51	115.84	Initial Hydro-static
1	275.08	116.47	Open To Flow (1)
10	494.23	130.38	Shut-In(1)
40	1288.39	124.41	End Shut-In(1)
41	537.99	124.04	Open To Flow (2)
49	706.09	128.65	Shut-In(2)
82	1276.60	127.57	End Shut-In(2)
83	2064.89	127.02	Final Hydro-static

Recovery

Length (ft)	Description	Volume (bbl)
124.00	OCVM, 5%W, 15%O, 80%M	1.74
975.00	GHOCMW, 10%M, 15%W, 25%G, 50%O	13.68
248.00	GSOCM, 10%G, 10%O, 80%M	3.48
0.00	186' of G.I.P.	0.00

Gas Rates

	Choke (inches)	Pressure (psig)	Gas Rate (Mcf/d)

* Recovery from multiple tests



**TRILOBITE
TESTING, INC.**

DRILL STEM TEST REPORT

FLUID SUMMARY

Palomino Petroleum Inc.

8 19s 25w Ness

4924 SE 84th St
New ton KS 67114-8827

H2 Unit # 1

Job Ticket: 51569

DST#: 2

ATTN: Ryan Seib 785 798 53

Test Start: 2012.12.20 @ 14:55:00

Mud and Cushion Information

Mud Type: Gel Chem

Cushion Type:

Oil API:

deg API

Mud Weight: 9.00 lb/gal

Cushion Length:

ft

Water Salinity:

ppm

Viscosity: 60.00 sec/qt

Cushion Volume:

bbl

Water Loss: 7.99 in³

Gas Cushion Type:

Resistivity: ohm.m

Gas Cushion Pressure:

psig

Salinity: 4500.00 ppm

Filter Cake: inches

Recovery Information

Recovery Table

Length ft	Description	Volume bbl
124.00	OCWM, 5%W, 15%O, 80%M	1.739
975.00	GHOCMW, 10%M, 15%W, 25%G, 50%O	13.677
248.00	GSOCM, 10%G, 10%O, 80%M	3.479
0.00	186' of G.I.P.	0.000

Total Length: 1347.00 ft

Total Volume: 18.895 bbl

Num Fluid Samples: 0

Num Gas Bombs: 0

Serial #:

Laboratory Name:

Laboratory Location:

Recovery Comments:

