

Ryan Seib
Petroleum Geologist

515 S. Towhee

Ness City, KS 67580

(785) 793-5399

GEOLOGIST'S REPORT
WELL LOG AND SAMPLE LOG

Geological Palomina Petroleum

LEITE H2 Unit #2

FIELD

LOCATION 1249' FWL + 2273' FWL

SEC. 8 TWP. 19S RBE 25W

COUNTY Ness STATE KS

CONTRACTOR WJ Drilling Rig #22

DATE 12/18/18

NO. 4675

DEPTH 3600' RTD

DEPTH 3600' RTD

DEPTH 3600' RTD

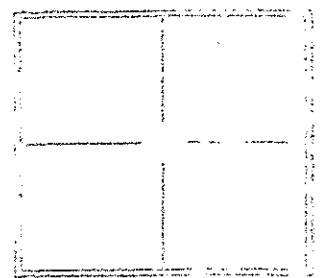
DEPTH 3400'

15-135-24037 Chemical

Anhydrite	1952 (-724)	1960 (+715)
Hebbar	3909 (-1337)	3906 (-1330)
Wadding	3951 (-1275)	3949 (-1277)
OIKC	4230 (-1494)	4269 (-1623)
Masmato	4225 (-1749)	4222 (-1746)
Purnee	4379 (-1803)	4374 (-1798)
Ft. Scott	4454 (-1878)	4451 (-1875)
Cherokee Sh	4479 (-1903)	4475 (-1899)
Mississippi	4544 (-1968)	4543 (-1967)

ELEVATION
2576'
2544'
From KB
Casing Required
8 5/8" @ 224'
5 1/2"

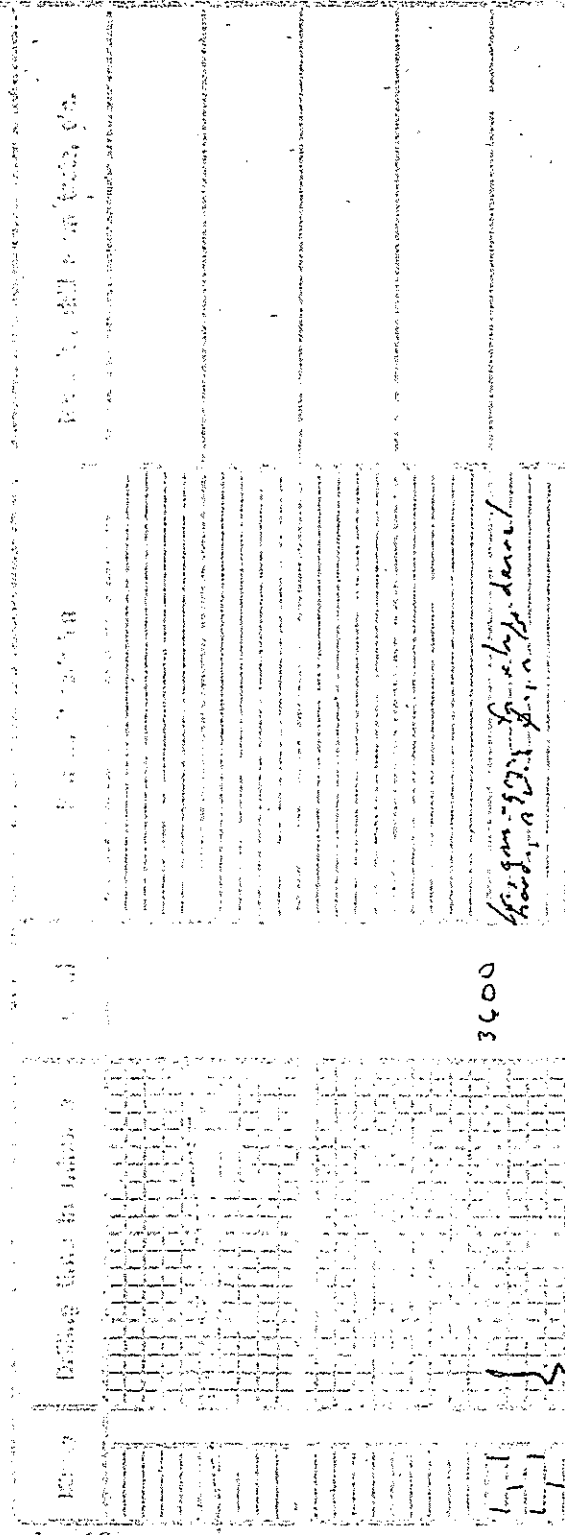
LOGGING RECORD
LWD, OIL,
Micro, Sonic



LEGEND

- [Symbol] Sandstone
- [Symbol] Shale
- [Symbol] Limestone
- [Symbol] Dolomite
- [Symbol] Anhydrite
- [Symbol] Salt
- [Symbol] Gypsum
- [Symbol] Clay
- [Symbol] Silt
- [Symbol] Gravel
- [Symbol] Unconsolidated

SCALE " = 100'



Handwritten note: *Wagon 5023 Sp. in log down*

3600

