

KANSAS CORPORATION COMMISSION
OIL & GAS CONSERVATION DIVISION

TEMPORARY ABANDONMENT WELL APPLICATION

OPERATOR: License#
Name:
Address 1:
Address 2:
City: State: Zip:
Contact Person:
Phone:
Contact Person Email:
Field Contact Person:
Field Contact Person Phone:

API No. 15-
Spot Description:
Sec. Twp. S. R.
GPS Location: Lat: Long:
Datum: NAD27 NAD83 WGS84
County: Elevation:
Lease Name: Well #:
Well Type: Oil Gas OG WSW Other:
SWD Permit #: ENHR Permit #:
Gas Storage Permit #:
Spud Date: Date Shut-In:

Table with 7 columns: Conductor, Surface, Production, Intermediate, Liner, Tubing. Rows include Size, Setting Depth, Amount of Cement, Top of Cement, Bottom of Cement.

Casing Fluid Level from Surface: How Determined? Date:
Casing Squeeze(s): to w / sacks of cement, to w / sacks of cement. Date:
Do you have a valid Oil & Gas Lease? Yes No
Depth and Type: Junk in Hole at Tools in Hole at Casing Leaks: Yes No Depth of casing leak(s):
Type Completion: ALT. I ALT. II Depth of: DV Tool: w / sacks of cement Port Collar: w / sack of cement
Packer Type: Size: Inch Set at: Feet
Total Depth: Plug Back Depth: Plug Back Method:

Geological Date:

Table with 4 columns: Formation Name, Formation Top, Formation Base, Completion Information. Rows 1 and 2.

UNDER PENALTY OF PERJURY I HEREBY ATTEST THAT THE INFORMATION CONTAINED HEREIN IS TRUE AND CORRECT TO THE BEST OF MY KNOWLEDGE

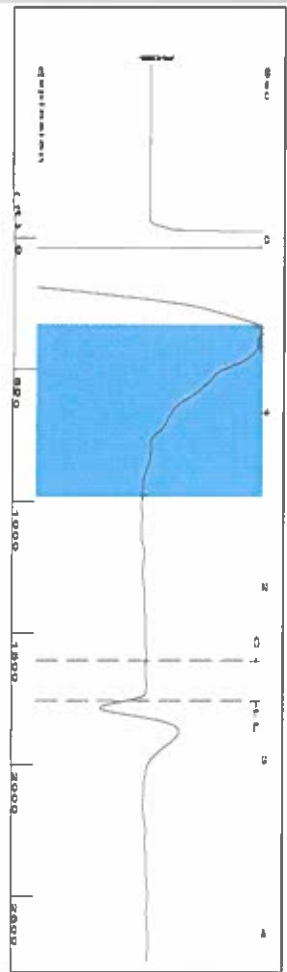
Submitted Electronically

Form with fields: Do NOT Write in This Space - KCC USE ONLY, Date Tested, Results, Date Plugged, Date Repaired, Date Put Back in Service, Review Completed by, Comments, TA Approved: Yes Denied, Date.

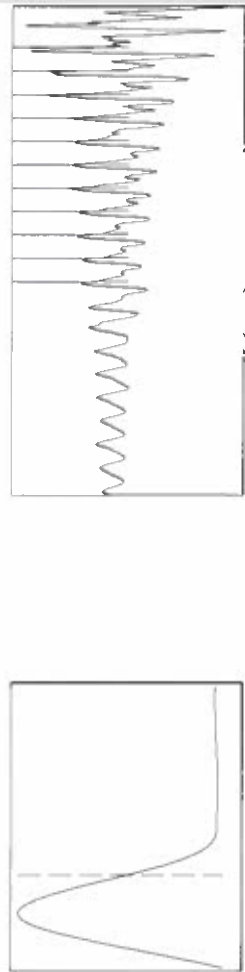
Mail to the Appropriate KCC Conservation Office:

Table with 2 columns: Office Address, Phone. Rows for KCC District Office #1, #2, #3, #4.

Group: KCSU Well: KCSU 1001 (acquired on: 04/01/21 09:37:23)



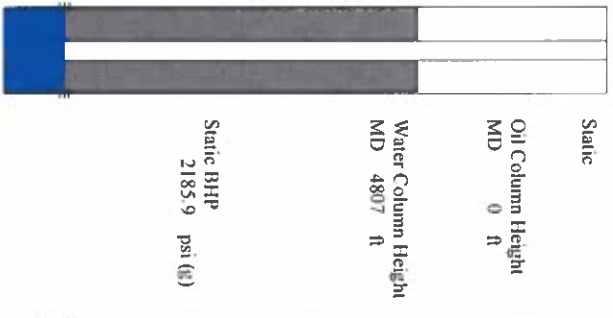
Filter Type High Pass Automatic Collar Count Yes
 Manual Acoustic Velo 1315.35 ft/s Manual JTS/sec 20.7469
 Time 2.668 sec
 Joints 55.5833 Jts
 Depth 1761.99 ft



Analysis Method: Automatic

Group: KCSU Well: KCSU 1001 (acquired on: 04/01/21 09:37:23)

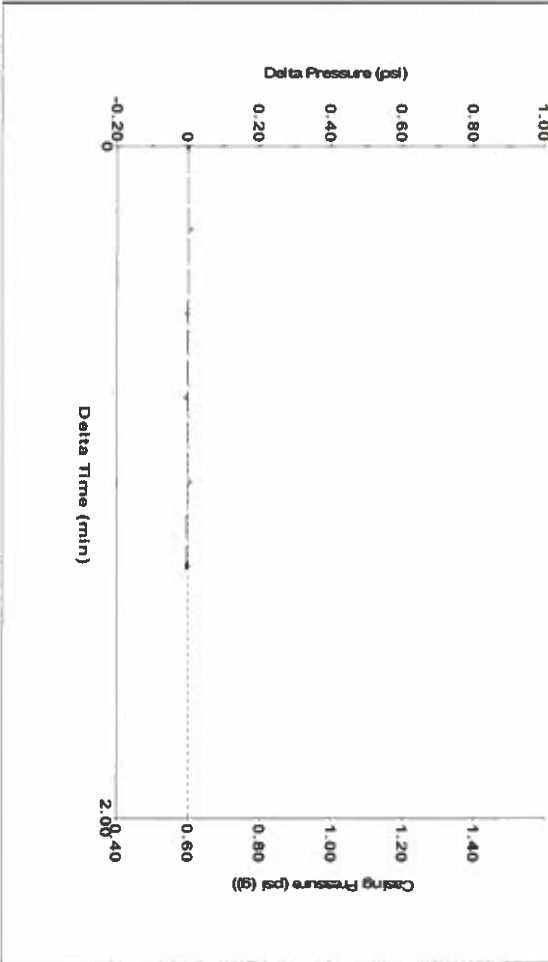
Production	Potential	Casing Pressure	Static
Current	BB/L/D	0.6 psi (g)	Oil Column Height
Water	BB/L/D	Casing Pressure Buildup	MD 0 ft
Gas	Masc/D	0.001 psi	Water Column Height
IPR Method	Vogel	1.25 min	MD 4807 ft
PBHP/SBHP	0.0	Gas/Liquid Interface Pressure	
Production Efficiency		1.2 psi (g)	
Oil 40 deg API		Liquid Level Depth	
Water 1.05 Sp.Gr.H2O		1761.99 ft	
Gas 0.66 Sp.Gr.AIR		Pump Intake Depth	
Acoustic Velocity		6563.00 ft	
		Formation Depth	
		6569.00 ft	



Group: KCSU Well: KCSU 1001 (acquired on: 04/01/21 09:37:23)

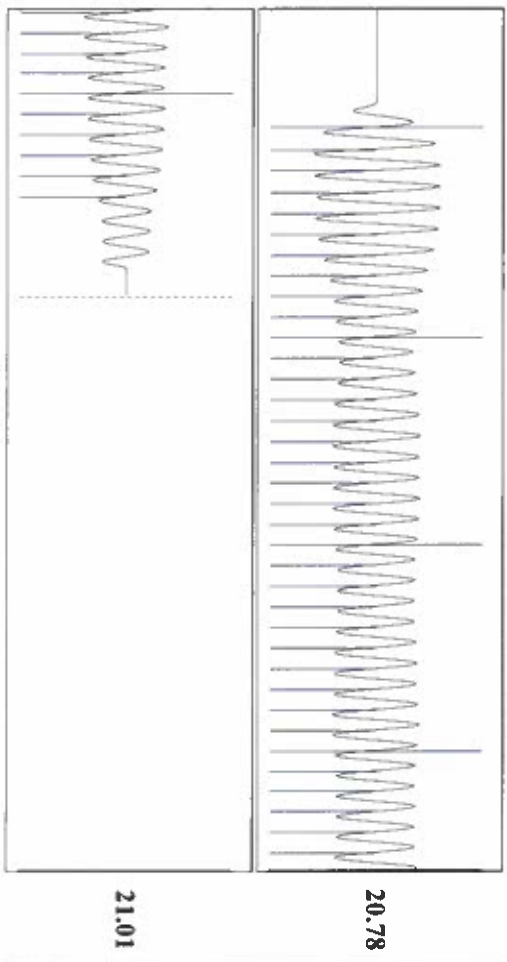
Shot @ 300psi BP

Casing Pressure Buildup



Change in Pressure -0.00 psi PTT249
 Change in Time 1.25 min Range 0 - 2 psi

Group: KCSU Well: KCSU 1001 (acquired on: 04/01/21 09:37:23)



Acoustic Velocity	1320.83 ft/s	Joints counted	45
Joints Per Second	20.8333 jts/sec	Joints to liquid level	55.5833
Depth to liquid level	1761.99 ft	Filter Width	18.7469
Automatic Collar Count	Yes	Time to 1st Collar	0.276

Conservation Division
District Office No. 1
210 E. Frontview, Suite A
Dodge City, KS 67801



Phone: 620-682-7933
<http://kcc.ks.gov/>

Andrew J. French, Chairperson
Dwight D. Keen, Commissioner
Susan K. Duffy, Commissioner

Laura Kelly, Governor

April 06, 2021

Katherine McClurkan
Merit Energy Company, LLC
13727 Noel Road, Suite 1200
Dallas, TX 75240

Re: Temporary Abandonment
API 15-189-20517-00-01
KCSU 1001
SE/4 Sec.35-34S-35W
Stevens County, Kansas

Dear Katherine McClurkan:

"Your temporary abandonment (TA) application for the well listed above has been approved. In accordance with K.A.R. 82-3-111 the TA status of this well will expire 04/06/2022.

- * If you return this well to service or plug it, please notify the District Office.
- * If you sell this well you are required to file a Transfer of Operator form, T-1.
- * If the well will remain temporarily abandoned, you must submit a new TA application, CP-111, before 04/06/2022.

You may contact me at the number above if you have questions.

Very truly yours,

Michael Maier"